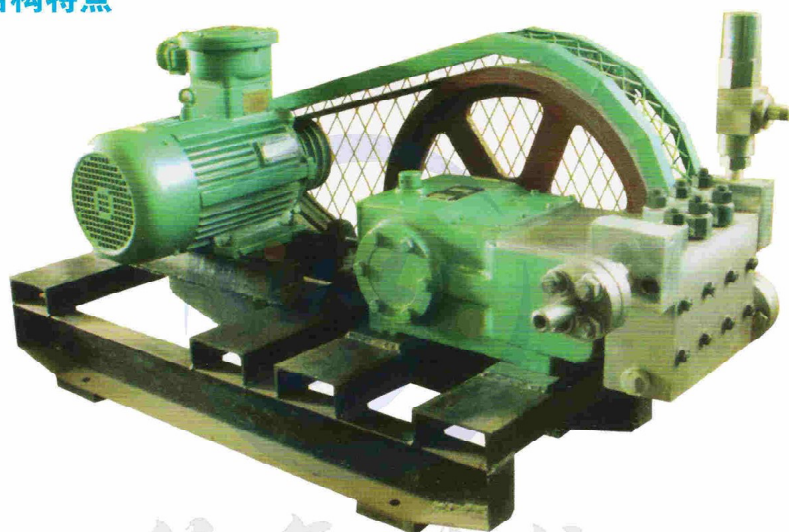


# 3ZHP35型超高压柱塞泵 3ZHP35 Ultra High Pressure Plunger Pump

## Structural Features

### 结构特点



Plunger average linear velocity

本泵为卧式三柱塞单作用泵。泵的结构为对称布置。液体进出口连接管可在液力端二侧任选一侧装接。整套设备都安装在同一底架上。It is a horizontal three-plunger single-acting pump, with symmetrically arranged structure. Liquid inlet and outlet connecting pipes can be installed on either side of the hydraulic end. The entire equipment is installed on the same chassis.

#### 动力端: Power End

机身——全对称箱式刚性铸件。机身下部设计成油池。  
曲轴——优质碳素钢锻件。  
连杆——锌铝合金精铸件。  
十字头——钢制筒形，简单耐用。

Body-Fully symmetrical box rigid casting. The lower part of the fuselage is designed as an oil sump.  
Crankshaft-High quality carbon steel forgings  
Link-Zinc aluminum alloy precision castings.  
Crosshead-Steel barrel, simple and durable.

#### 液力端: Hydraulic End

材料——针对输送介质选定。可为：碳钢、马氏体不锈钢、奥氏体不锈钢、超低碳不锈钢等。ultra-low carbon stainless steel.  
密封结构——按输送介质，工作压力选定。Sealing structure- according to the conveying medium and working pressure.  
密封材料可为：成型橡胶圈、碳纤维、麻纤维、芳纶等。Sealing Material: rubber ring, Carbon fiber, hemp fiber, aramid  
进排液阀——按介质与流量选定。可为平板阀、球阀、锥阀等。Inlet and discharge valve-according to the medium and flow. Such as flat valve, ball valve, poppet valve.

#### 润滑方式与油品牌号: Lubrication Method and Oil

飞油润滑——润滑方式简单可靠。Flying oil lubrication.  
油品编号——N220#极压齿轮油。Oil: N220# Extreme Pressure Gear Oil

## Technical Parameters

### 技术参数

Plunger stroke 柱塞行程: 35mm  
Plunger rated thrust 柱塞额定推力: 8000N

Motor Speed 速 比 泵 速 柱塞平均线速度 排出压力 MPa	电动机转速 r/min	i	1000				1500				
			5.26	4	3.33	2.87	3.75	3.33	3	2.73	
Speed ratio											
Pump speed	r/min		190	250	300	350	400	450	500	550	
柱塞平均线速度	m/s		0.222	0.29	0.35	0.408	0.467	0.525	0.583	0.642	
Discharge pressure	柱塞直径 mm	Plunger Diameter	Flow 流量m³/h				L/min				Pump shaft power 泵轴功率(kW)
			m³/h	L/min	kW		m³/h	L/min	kW		
10	32	m³/h L/min kW	0.9	1.18	1.42	1.64	1.87	2.1	2.33	2.55	
			15	19.7	23.7	27.3	31.2	35	38.8	42.5	
			2.92	3.84	4.62	5.38	6.15	6.9	7.65	8.47	
11.5	30	m³/h L/min kW	0.79	1.04	1.25	1.44	1.65	1.84	2.04	2.24	
			13.8	17.3	20.8	24.1	27.5	30.7	34	37.3	
			3.1	3.88	4.66	5.46	6.24	6.96	7.71	8.55	
13	28	m³/h L/min kW	0.68	0.9	1.08	1.248	1.428	1.6	1.78	1.94	
			11.4	15	18	20.8	23.8	26.7	29.7	32.3	
			2.89	3.8	4.56	5.33	6.1	6.84	7.61	8.37	
15.5	25	m³/h L/min kW	0.54	0.71	0.85	0.98	1.12	1.26	1.4	1.52	
			9	11.8	14.2	16.4	18.7	21	23.4	25.4	
			2.75	3.6	4.34	5.07	5.79	6.52	7.24	7.97	
18.5	23	m³/h L/min kW	0.45	0.6	0.72	0.83	0.95	1.06	1.18	1.29	
			7.62	10	12	13.8	15.8	17.8	19.7	21.5	
			2.78	3.65	4.38	5.1	5.84	6.57	7.3	8	
22	21	m³/h L/min kW	0.38	0.5	0.6	0.7	0.79	0.89	0.99	1.07	
			6.35	8.3	10	11.6	13.2	14.8	16.5	17.9	
			2.75	3.62	4.35	5.13	5.8	6.53	7.25	7.98	
25	20	m³/h L/min kW	0.346	0.455	0.546	0.636	0.72	0.81	0.9	0.99	
			5.77	7.58	9.1	10.6	12	13.5	15	16.5	
			2.84	3.73	4.48	5.2	5.98	6.73	7.48	8.32	
27.5	19	m³/h L/min kW	0.31	0.41	0.49	0.57	0.65	0.73	0.81	0.88	
			5.2	6.84	8.17	9.53	10.9	12.2	13.5	14.7	
			2.82	3.71	4.43	5.17	5.98	6.69	7.4	8.15	
31.5	18	m³/h L/min kW	0.28	0.368	0.442	0.513	0.587	0.65	0.73	0.79	
			4.67	6.14	7.37	8.55	9.78	10.94	12.15	13.2	
			2.9	3.81	4.58	5.37	6.14	6.87	7.63	8.3	
35	17	m³/h L/min kW	0.33	0.39	0.45	0.571	0.58	0.64	0.7		
			5.45	6.54	7.54	8.63	9.7	10.7	11.75		
			3.8	4.56	5.32	6.09	6.84	7.55	8.38		
40	16	m³/h L/min kW	0.29	0.34	0.4	0.46	0.51	0.57	0.62		
			4.83	5.8	6.72	7.68	8.6	9.55	10.4		
			3.89	4.68	5.4	6.2	7	7.79	8.58		
50	14	m³/h L/min kW				0.30	0.34	0.38	0.43	0.46	
						5.0	5.7	6.4	7.18	7.8	
						5.13	5.86	6.59	7.3	8.06	

泵轴功率是指单泵的机械效率为0.9的计算值，未考虑泵的传动装置的效率。  
表中的流量为实际泵可排出的额定流量。

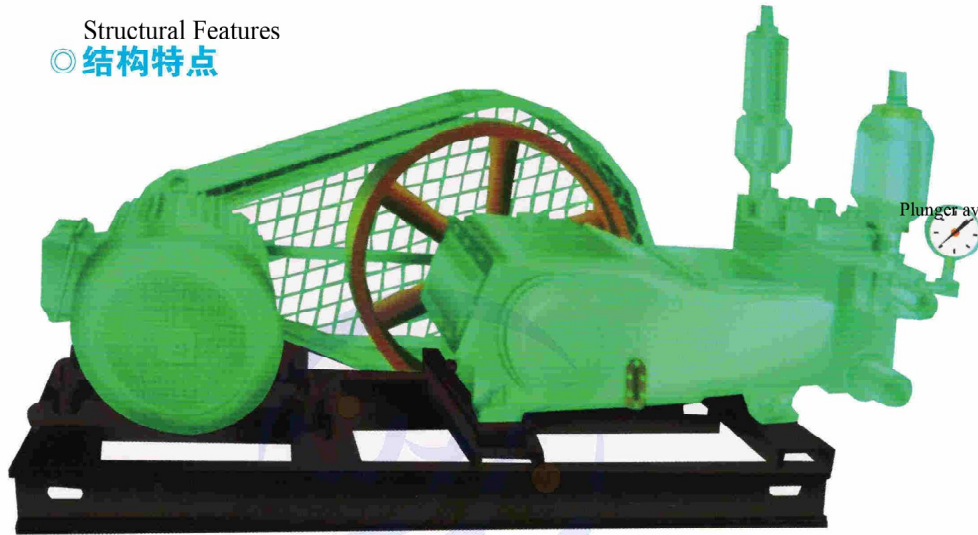
Pump shaft power refers to the calculated value of the mechanical efficiency of a single pump of 0.9, without considering the efficiency of the pump transmission.

The flow in the table is the rated flow that the actual pump can discharge

# 3ZHP55型超高压柱塞泵 3ZHP55 Ultra High Pressure Plunger Pump

## Structural Features

### 结构特点



Plunger average linear velocity

## Technical Parameters

### 技术参数

Plunger stroke 柱塞行程: 55mm  
Plunger rated thrust 柱塞额定推力: 8200N

Motor Speed	电动机转速	r/min	1000											
Speed ratio	速 比	i	7.7	5.6	5	4	3.55	3.15	2.8	2.5	2.24	2	1.8	
Pump speed	泵 速	r/min	130	175	200	250	280	315	360	400	445	500	555	
Plunger average linear velocity	柱塞平均线速度	m/s	0.238	0.32	0.367	0.458	0.513	0.578	0.66	0.73	0.816	0.917	1.02	
Discharge pressure	排 出 压力 MPa	柱 塞 直径 mm	Plunger Diameter	Flow 流量 m³/h			L/min			Pump shaft power 泵轴功率(kW)				
				m³/h	L/min	kW	m³/h	L/min	kW	m³/h	L/min	kW		
3.5	55	55	m³/h	2.87	3.84	4.4	5.5	6.13	6.86	7.87	8.64	9.66		
			L/min	47.9	64	73.3	91.6	102	114	131	144	161		
			kW	3.25	4.3	4.95	6.2	6.97	7.81	8.93	9.92	11.1		
4	50	50	m³/h	2.37	3.22	3.67	4.9	5.02	5.7	6.47	7.17	7.92		
			L/min	39.5	53.6	61.1	75.7	83.7	95	108	119	132		
			kW	3.05	4.14	4.71	5.88	6.53	7.4	8.42	9.36	10.4		
4.5	48	48	m³/h	2.2	2.93	3.38	4.2	4.68	5.24	5.97	6.54	7.32	8.1	
			L/min	36.7	48.9	56.4	70.1	78	87	99.5	109	122	135	
			kW	3.17	4.26	4.88	6.1	6.82	7.68	8.77	9.75	10.8	12.2	
5	45	45	m³/h	1.92	2.58	2.93	3.7	4.07	4.63	5.24	5.86	6.42	7.2	
			L/min	32	43	48.9	61.7	67.9	77.2	87.4	97.6	107	120	
			kW	3.1	4.16	4.75	5.95	6.65	7.49	8.56	9.51	10.6	11.9	
6.3	40	40	m³/h	1.52	2.03	2.31	2.92	3.23	3.62	4.17	4.58	5.07	5.64	6.24
			L/min	25.4	33.8	38.5	48.6	54	60.4	69.5	76.3	84.5	94	104
			kW	3.08	4.15	4.73	5.92	6.63	7.5	8.5	9.5	10.2	11.5	13.1
8.5	35	35	m³/h	1.18	1.58	1.8	2.24	2.45	2.79	3.18	3.53	3.91	4.32	4.8
			L/min	19.7	26.3	30.1	37.4	41	46.5	53	58.8	65.3	72	80
			kW	3.18	4.28	4.9	6.12	6.85	7.7	8.8	9.8	10.9	12.2	13.6
10	32	32	m³/h	0.96	1.29	1.52	1.85	2.06	2.34	2.67	2.92	3.24	3.6	4
			L/min	16	21.6	25.4	30.9	34.4	39	44.6	48.7	54	60	67
			kW	3.13	4.21	4.82	6.02	6.74	7.6	8.7	9.6	10.7	12	13.4
13	28	28	m³/h	0.72	1.01	1.13	1.4	1.56	1.78	2.05	2.26	2.47	2.78	3.04
			L/min	12	16.9	18.8	23.4	26	29.7	34.2	37.7	41.1	46.4	50.7
			kW	3.12	4.2	4.8	6	6.7	7.6	8.7	9.6	10.8	12.1	13.5
16	25	25	m³/h	0.59	0.79	0.9	1.12	1.25	1.41	1.61	1.75	1.98	2.21	2.44
			L/min	9.9	13.2	15	18.7	21	23.6	26.8	29.3	33	36.8	40.7
			kW	3.06	4.11	4.7	5.88	6.58	7.4	8.5	9.4	10.4	11.8	13.1
21	22	22	m³/h	0.45	0.62	0.7	0.86	0.976	1.11	1.24	1.37	1.53	1.69	1.89
			L/min	7.5	10.3	11.7	14.4	16.3	18.5	20.8	22.9	25.6	28.2	31.6
			kW	3.1	4.18	4.78	5.98	6.7	7.5	8.6	9.6	10.6	12	13.3
25	20	20	m³/h	0.38	0.51	0.57	0.72	0.805	0.904	1.03	1.13	1.26	1.42	1.57
			L/min	6.3	8.5	9.6	12.1	13.4	15	17.2	18.9	21	23.6	26.1
			kW	3.06	4.11	4.7	5.88	6.58	7.4	8.5	9.4	10.4	11.8	13.1
31.5	18	18	m³/h	0.3	0.41	0.47	0.58	0.65	0.73	0.82	0.92	1.02	1.14	1.25
			L/min	5	6.8	7.8	9.76	10.8	12.14	13.8	15.4	17	19	20.9
			kW	3.17	4.26	4.88	6.1	6.82	7.7	8.8	9.8	10.8	12.2	13.5
40	16	16	m³/h		0.32	0.37	0.46	0.51	0.574	0.66	0.72	0.8	0.89	1.00
			L/min		5.4	6.1	7.67	8.6	9.56	10.9	12	13.3	14.9	16.6
			kW		4.21	4.82	6.02	6.74	7.6	8.7	9.6	10.7	12	13.4
50	14	14	m³/h		0.25	0.28	0.35	0.392	0.43	0.49	0.548	0.606	0.678	0.75
			L/min		4.1	4.7	5.79	6.53	7.28	8.3	9.14	10.1	11.3	12.5
			kW		4.03	4.61	5.76	6.45	7.3	8.3	9.2	10.3	11.5	12.8

本泵为卧式三柱塞单作用泵。泵的结构为对称布置。液体进出口连接管可在液力端二侧任选一侧装接。整套设备都安装在同一底架上。It is a horizontal three-plunger single-acting pump, with symmetrically arranged structure. Liquid inlet and outlet connecting pipes can be installed on either side of the hydraulic end. The entire equipment is installed on the same chassis.

**动力端:** Power End Body-Fully symmetrical box rigid casting. The lower part of the fuselage is designed as an oil sump.  
 机身——全对称箱式刚性铸件。机身下部设计成油池。  
 曲轴——优质碳素钢锻件。 Crankshaft- High quality carbon steel forgings  
 连杆——合金钢、模锻。 Link-alloy steel, die forging.  
 连杆瓦——大头采用复合轴承合金标准瓦; 小头衬套采用润滑性好, 耐压比高的特殊合金。 Connecting rod- big head use composite bearing alloy standard tile, small head use special alloy with good lubricity and high specific pressure.  
 十字头——高强度、耐磨铝合金精铸件。 Crosshead-High-strength wear-resistant aluminum alloy precision castings.

**液力端:** Hydraulic End Material-according to the conveying medium: carbon steel, martensitic stainless steel, ultra-low carbon stainless steel.  
 材料——针对输送介质选定。可为: 碳钢、马氏体不锈钢、奥氏体不锈钢、超低碳不锈钢。  
 密封结构——按输送介质, 工作压力选定。 Sealing structure- according to the conveying medium and working pressure.  
 密封材料可为: 成型橡胶圈、碳纤维、麻纤维、芳纶等。 Sealing Material: rubber ring, Carbon fiber, hemp fiber, aramid  
 进排液阀——按介质与流量选定。可为平板阀、球阀、锥阀等。 Inlet and discharge valve-according to the medium and flow. Such as flat valve, ball valve, poppet valve.

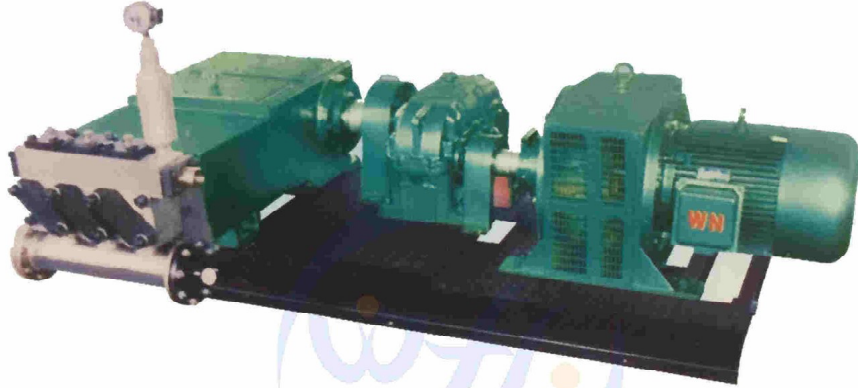
**润滑方式与油品牌号:** Lubrication Method and Oil  
 飞油润滑——润滑方式简单可靠。 Flying oil lubrication.  
 油品编号——N220#极压齿轮油。 Oil: N220# Extreme Pressure Gear Oil

泵轴功率是指单泵的机械效率为0.9的计算值, 未考虑泵的传动装置的效率。  
 表中的流量为实际泵可排出的额定流量。  
 Pump shaft power refers to the calculated value of the mechanical efficiency of a single pump of 0.9, without considering the efficiency of the pump transmission.  
 The flow in the table is the rated flow that the actual pump can discharge

# 3ZHP70型超高压柱塞泵 3ZHP70 Ultra High Pressure Plunger Pump

## Structural Features

### 结构特点



本泵为卧式三柱塞单作用泵。泵的结构为对称布置。液体进出口连接管可在液力端二侧任选一侧装接。整套设备都安装在同一底架上。It is a horizontal three-plunger single-acting pump, with symmetrically arranged structure. Liquid inlet and outlet connecting pipes can be installed on either side of the hydraulic end. The entire equipment is installed on the same chassis.

**动力端: Power End** Body-Fully symmetrical box rigid casting.  
 机身——全对称箱式钢性铸件。机身下部设计成油池。 The lower part of the fuselage is designed as an oil sump  
 曲轴——优质碳素钢锻件。 Crankshaft- High quality carbon steel forgings  
 连杆——优质碳素钢精锻件。 Link-High quality carbon steel precision forgings.  
 连杆瓦——大头采用复合轴承合金标准瓦; 小头衬套采用润滑性好, 耐比压高的特殊合金。 Connecting rod- big head use composite bearing alloy standard tile, small head use special alloy with good lubricity and high specific pressure.  
 十字头——高强度耐磨球铁精铸件。 Crosshead-High-strength wear-resistant ductile iron castings.

**液力端: Hydraulic End** Material-according to the conveying medium: carbon steel, martensitic stainless steel,  
 材料——针对输送介质选定。可为: 碳钢、马氏体不锈钢、奥氏体不锈钢、超低碳不锈钢等。 ultra-low carbon stainless steel.  
 密封结构——按输送介质, 工作压力选定。 Sealing structure- according to the conveying medium and working pressure.  
 密封材料可为: 成型橡胶圈、碳纤维、麻纤维、芳纶等。 Sealing Material: rubber ring, Carbon fiber, hemp fiber, aramid  
 进排液阀——按介质与流量选定。可为平板阀、球阀、锥阀等。 Inlet and discharge valve-according to the medium and flow.  
 Such as flat valve, ball valve, poppet valve.

**润滑方式与油品牌号:**  
 飞油润滑——润滑方法简单可靠。 Forced Lubrication: The direction of the oil circuit is reverse lubrication. Sufficient amount of oil and stable oil pressure greatly improve the carrying capacity.  
 油品编号——N220#极压齿轮油。 Oil: N220# Extreme Pressure Gear Oil

## Technical Parameters

### 技术参数

Plunger stroke 柱塞行程: 70mm  
 Plunger rated thrust 柱塞额定推力: 19000N

Motor Speed	电动机转速		1000												
	r/min														
Speed ratio	减速器速比		i												
			8	7.1	6.3	5.6	5	4	3.55	3.15	2.8	2.5	2.24	2	
Pump speed	泵速		r/min												
			125	141	159	179	200	250	282	317	357	400	444	500	
Plunger average linear velocity	柱塞平均线速度		m/s												
			0.29	0.33	0.37	0.41	0.46	0.58	0.65	0.73	0.83	0.93	1	1.16	
Discharge pressure	排出压力 MPa	柱塞直径 mm	Plunger Diameter	Flow 流量 m³/h						Pump shaft power 泵轴功率 (kW)					
				L/min	kW	L/min	kW	L/min	kW	L/min	kW	L/min	kW	L/min	kW
4	75	75	m³/h	6.6	7.5	8.4	9.5	10.5	13.2	15	16.8	19	21	23.5	26.5
			L/min	110	124	140	158	176	220	249	280	315	352	390	440
5.5	65	65	m³/h	5	5.6	6.3	7.1	7.9	10	11.2	12.6	14.2	15.9	17.6	20
			L/min	83	93	105	118	132	166	186	210	236	265	294	330
7	58	58	m³/h	4	4.5	5	5.6	6.3	7.9	8.9	10	11	12.6	14	15.8
			L/min	66	74	84	94	105	131	148	167	188	210	234	263
10	48	48	m³/h	2.7	3	3.5	3.8	4.3	5.4	6.1	6.8	7.7	8.6	9.6	10.8
			L/min	45	50	57	65	72	90	102	114	128	144	160	180
14	40	40	m³/h	1.8	2.1	2.4	2.7	3	3.7	4.2	4.7	5.3	6	6.6	7.4
			L/min	31	35	40	44	50	62	70	79	88	100	110	124
16	38	38	m³/h	1.7	1.9	2.1	2.4	2.7	3.4	3.8	4.2	4.8	5.4	6	6.7
			L/min	28	31	3.5	40	45	56	63	71	80	90	100	112
20	34	34	m³/h	1.3	1.5	1.7	1.9	2.1	2.6	3	3.3	3.8	4.2	4.7	5.3
			L/min	22	25	28	32	35	44	50	56	63	71	78	88
25	30	30	m³/h	1	1.2	1.3	1.5	1.7	2	2.3	2.6	3	3.3	3.7	4.1
			L/min	17	19	22	25	28	35	39	44	50	55	61	67
31.5	27	27	m³/h	0.8	0.9	1	1.2	1.3	1.6	1.8	2.1	2.3	2.6	3	3.3
			L/min	14	15	17	20	22	27	31	35	40	44	49	55
35	26	26	m³/h	0.78	0.86	1	1.1	1.2	1.5	1.7	2	2.2	2.5	2.7	3
			L/min	13	15.5	16	18	20	25	29	32	36	41	45	51
40	24	24	m³/h	0.65	0.73	0.82	0.92	1	1.3	1.5	1.6	1.8	2	2.3	2.6
			L/min	11	12	14	15.5	17.2	21	24	27	31	34	38	43
50	22	22	m³/h	0.55	0.6	0.7	0.8	0.9	1	1.2	1.4	1.5	1.7	1.9	2.2
			L/min	9	10	11	13	14.5	18	20	23	26	29	32	36
60	20	20	m³/h	0.5	0.57	0.63	0.7	0.9	1	1.2	1.3	1.4	1.5	1.8	
			L/min	8	9.5	10.5	11.8	15	16.7	19	21	24	26	30	34
70	18	18	m³/h	0.5	0.52	0.6	0.72	0.8	0.9	1	1.1	1.3	1.4	1.44	
			L/min	7.6	8.6	9.6	12	13.5	15.2	17	19.2	21	24	24	31

泵轴功率是指单泵的机械效率为0.9的计算值, 未考虑泵的传动装置的效率。表中的流量为实际泵可排出的额定流量。

Pump shaft power refers to the calculated value of the mechanical efficiency of a single pump of 0.9, without considering the efficiency of the pump transmission.

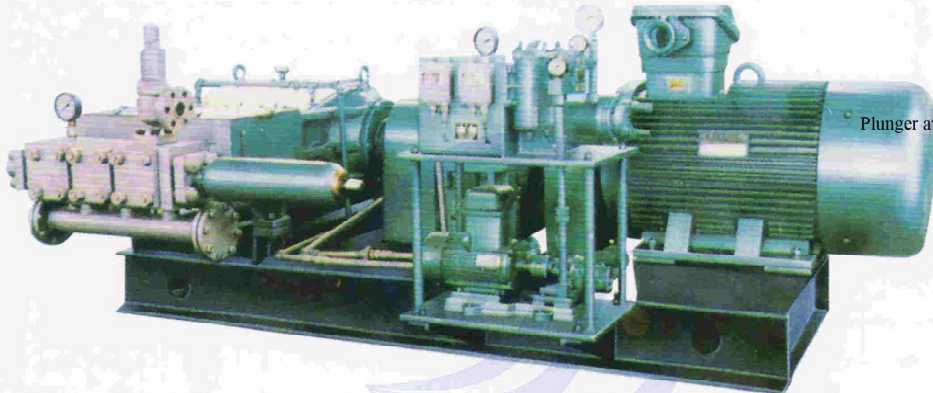
The flow in the table is the rated flow that the actual pump can discharge



# 3ZHP130型超高压柱塞泵 3ZHP130 Ultra High Pressure Plunger Pump

## Structural Features

### 结构特点



It is a horizontal three-plunger single-acting pump, with symmetrically arranged structure. Liquid inlet and outlet connecting pipes can be installed on either side of the hydraulic end. The entire equipment is installed on a chassis. The structure of the pump is symmetrical. The liquid inlet and outlet connecting pipes can be installed on either side of the hydraulic end. The entire equipment is installed on the same chassis.

#### Power End

**动力端:** Body-Fully symmetrical box rigid casting. 机身——全对称箱式刚性铸件。机身下部设计成油池。The lower part of the fuselage is designed as an oil sump

曲轴——合金钢锻件。Crankshaft- High quality carbon steel forgings

连杆——高强度，消震性好的球铁精铸件。Link-Nodular cast iron casting with high strength and good shock absorption.

连杆瓦——大头采用复合轴承合金标准瓦；小头衬套采用润滑性好，耐比压高的特殊合金。Connecting rod- big head use composite bearing alloy standard tile, small head use special alloy with good lubricity and high specific pressure.

十字头——高强度耐磨球铁精铸件。Crosshead-High-strength wear-resistant ductile iron castings.

**Hydraulic End**  
**液力端:** Material-according to the conveying medium: carbon steel, martensitic stainless steel, ultra-low carbon stainless steel, austenitic stainless steel, ultra-low carbon stainless steel. 材料——针对输送介质选定。可为：碳钢、马氏体不锈钢、奥氏体不锈钢、超低碳不锈钢等。 carbon stainless steel.

密封结构——按输送介质，工作压力选定。 Sealing structure- according to the conveying medium and working pressure. 密封材料可为：成型橡胶圈、碳纤维、麻纤维、芳纶等。 Sealing Material: rubber ring, Carbon fiber, hemp fiber, aramid

进排液阀——按介质与流量选定。可为平板阀、球阀、锥阀等。 Inlet and discharge valve-according to the medium and flow. Such as flat valve, ball valve, poppet valve.

#### Lubrication Method and Oil

**润滑方式与油品牌号:** Forced Lubrication: The direction of the oil circuit is reverse lubrication. Sufficient amount of oil and stable oil pressure greatly improve the carrying capacity.

油品编号——N220#极压齿轮油。 Oil: N220# Extreme Pressure Gear Oil

## Technical Parameters

### 技术参数

Plunger stroke 柱塞行程: 130mm  
Plunger rated thrust 柱塞额定推力: 80000N

电动机转速	r/min	1500													
速 比	i	16	14	12.5	11.2	10	9	8	7.1	6.3	5.6	5	4.5		
泵 速	r/min	94	107	120	134	150	167	185	211	238	268	300	333		
柱塞平均线速度	m/s	0.407	0.46	0.52	0.58	0.65	0.72	0.8	0.91	1.03	1.16	1.3	1.44		
排 出 压力 MPa	柱 塞 直径 mm	Plunger Diameter	Flow		Pump shaft power										
			流量m³/h	L/min	泵轴功率(kW)										
6	125	m³/h	25.4	28.8	32.3	36.1	40.5	45.1	49.9	56.9	64.2	72.3	80.9	89.8	
			L/min	423	481	539	602	674	751	831	949	1070	1205	1349	1497
			kW	46.0	52.4	58.8	65.6	73.4	81.8	90.6	103.3	116.6	131	147	163
8	110	m³/h	19.6	22.3	25.1	28	31.3	34.9	38.6	44.1	49.7	56	62.7	69.6	
			L/min	327	372	418	466	522	581	644	734	828	933	1044	1159
			kW	47.5	54.1	60.7	67.8	75.8	84.5	93.5	106.7	120	135	152	168
10	100	m³/h	16.2	18.5	20.7	23.1	25.9	28.8	31.9	36.4	41.1	46.2	51.8	57.5	
			L/min	270	308	345	385	431	480	532	607	685	771	863	958
			kW	49.1	55.9	62.7	70.0	78.4	87.3	96.6	110.2	124	140	157	174
12.5	88	m³/h	12.6	14.3	16.0	17.9	20.1	22.3	24.7	28.2	31.8	35.8	40.1	44.5	
			L/min	209	238	267	290	334	372	412	470	530	597	668	742
			kW	47.5	54.1	60.7	67.8	75.8	84.5	93.5	107	120	135	152	168
16	78	m³/h	9.7	11.1	12.5	13.9	15.6	17.4	19.2	21.9	24.7	27.8	31.2	34.6	
			L/min	162	185	208	232	259	289	320	365	412	464	519	577
			kW	47.3	53.8	60.4	67.4	75.4	84.0	93.1	106	119	135	151	167
18	72	m³/h	8.3	9.5	10.6	11.8	13.3	14.8	16.4	18.7	21.1	23.7	26.6	29.5	
			L/min	138	158	177	198	221	246	273	311	351	395	443	491
			kW	45.3	51.6	57.9	64.6	72.3	80.5	89.2	102	115	129	145	161
20	70	m³/h	7.8	8.9	10.0	11.2	12.5	14.0	15.5	17.6	19.9	22.4	25.1	27.8	
			L/min	131	149	167	187	209	233	258	294	332	374	418	464
			kW	47.6	54.2	60.8	67.9	75.9	84.6	93.7	107	120	136	152	168
25	63	m³/h	6.3	7.2	8.0	9.0	10.0	11.2	12.4	14.2	15.9	17.9	20.1	22.3	
			L/min	105	119	134	149	167	186	206	236	266	299.6	335	372
			kW	47.6	54.2	60.9	67.9	76.1	84.7	93.8	107	120.7	136	152	169
28	58	m³/h	5.3	6.1	6.8	7.6	8.5	9.5	10.5	12.0	13.5	15.2	17	18.9	
			L/min	89	101	114	127	142	158	175	200	225	254	284	315
			kW	45.2	51.5	57.8	64.5	72.2	80.4	89.1	102	114	129	144	160
31.5	55	m³/h	4.8	5.4	6.1	6.8	7.6	8.5	9.4	10.8	12.2	13.7	15.3	17.0	
			L/min	80.1	91.1	102	114	128	142	157	179	203	228	255	283
			kW	45.8	52.1	58.5	65.3	73.0	81.4	90.1	103	116	130	146	162
35	53	m³/h	4.5	5.1	5.7	6.3	7.1	8.0	8.8	10.0	11.3	12.7	14.2	15.8	
			L/min	74.3	84.6	95.0	106	118	134	146	167	188	212	237	263
			kW	47.2	53.7	60.3	67.3	75.4	84.8	93.0	106	119	134	151	167
40	50	m³/h	3.9	4.5	5.0	5.6	6.3	7.0	7.7	8.8	9.9	11.2	12.5	13.9	
			L/min	65.4	74.5	83.6	93.3	104	116	129	147	166	186	209	232
			kW	47.5	54.1	60.7	67.8	75.5	84.5	93.6	107	120	135	152	168
50	43	m³/h	2.9	3.3	3.7	4.1	4.6	5.1	5.7	6.5	7.4	8.3	9.3	10.3	
			L/min	48.4	55.1	61.8	69	77.3	86	95.3	108	123	138	154	171
			kW	43.9	50.0	56.1	62.6	70.1	78.1	86.5	98.6	111	125	140	156
70	38	m³/h	2.3	2.6	2.9	3.2	3.6	4.0	4.5	5.1	5.7	6.5	7.2	8.0	
			L/min	37.8	43.0	48.2	53.9	60.3	67.2	74.4	84.8	95.7	108	121	134
			kW	48.0	54.7	61.3	68.5	76.7	86.0	94.6	108	121	137	153	170

泵轴功率是指单泵的机械效率为0.9的计算值，未考虑泵的传动装置的效率。

表中的流量为实际泵可排出的额定流量。

Pump shaft power refers to the calculated value of the mechanical efficiency of a single pump of 0.9, without considering the efficiency of the pump transmission.

The flow in the table is the rated flow that the actual pump can discharge