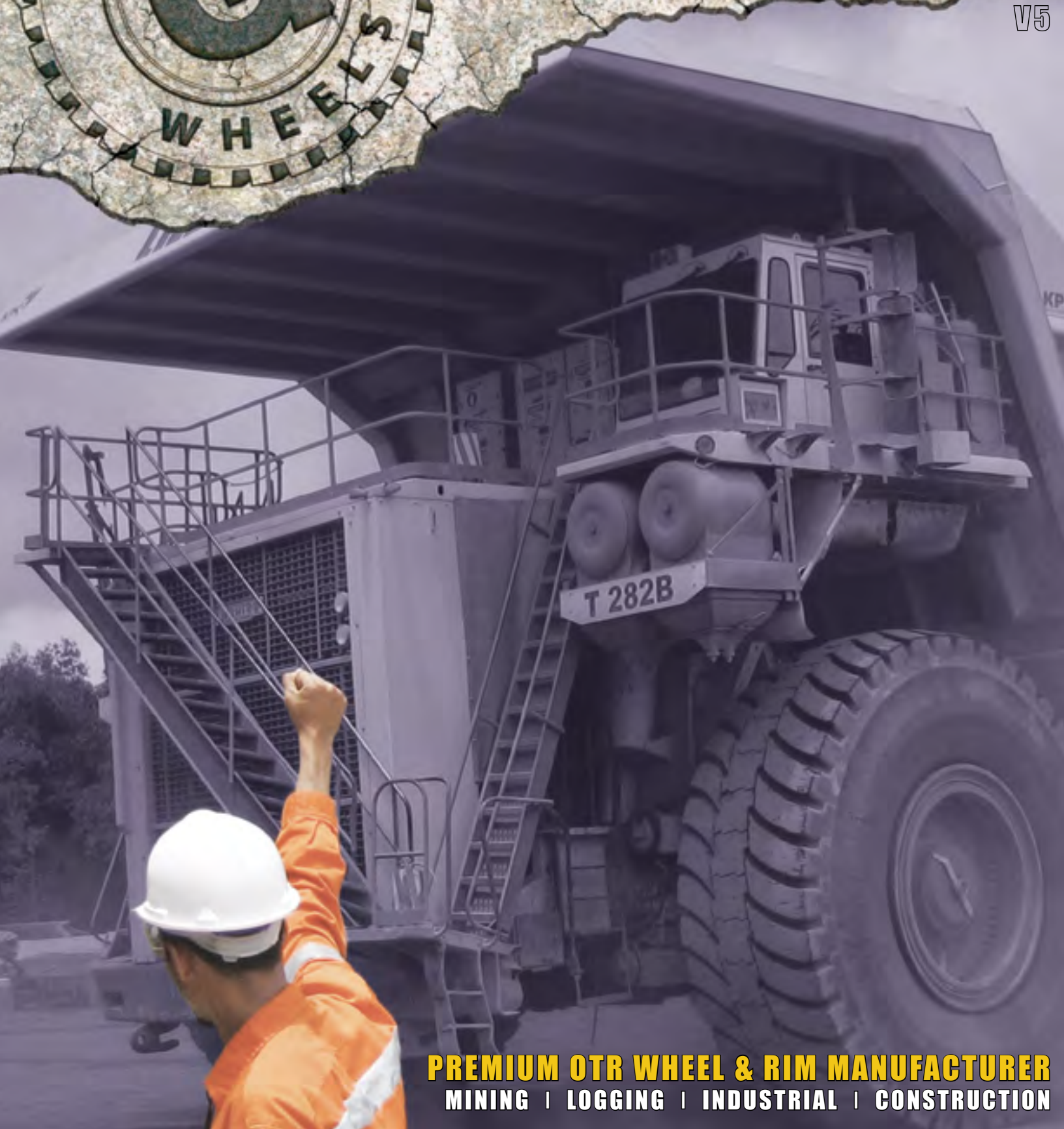




CATALOG

V5



PREMIUM OTR WHEEL & RIM MANUFACTURER
MINING | LOGGING | INDUSTRIAL | CONSTRUCTION



Please Photocopy This Form As Needed

Wheel Measurement Chart

USA

Phone: 775.778.3410
 Fax: 775.778.3418

Canada

Phone: 604.538.0058
 Fax: 604.541.2850

MACHINE INFORMATION

Make: _____ Model: _____ Tire Size: _____

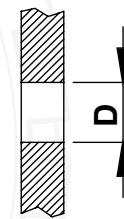
WHEEL INFORMATION

- A** Wheel Diameter: _____
- B** Wheel Width: _____
- C** Number of Bolt Holes: _____
- D** Bolt Hole Size: _____
- E** Bolt Circle Diameter: _____
- F** Hub Pilot Diameter: _____
- G** Front Disc Offset*: _____
- H** Rear Disc Offset*: _____
- I** Disc Thickness: _____
- ?** Stampings on Wheel: _____

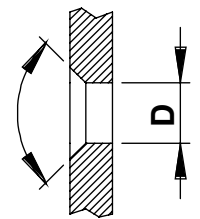
*Provide at least one offset.

Bolt Hole Type
(Select One)

Straight Drilled



Cone Seat



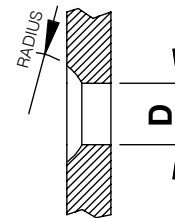
90° 60°

Rim Type
(Select One)

1-Piece Tubeless 3-Piece Tubeless



Ball Seat



Standard

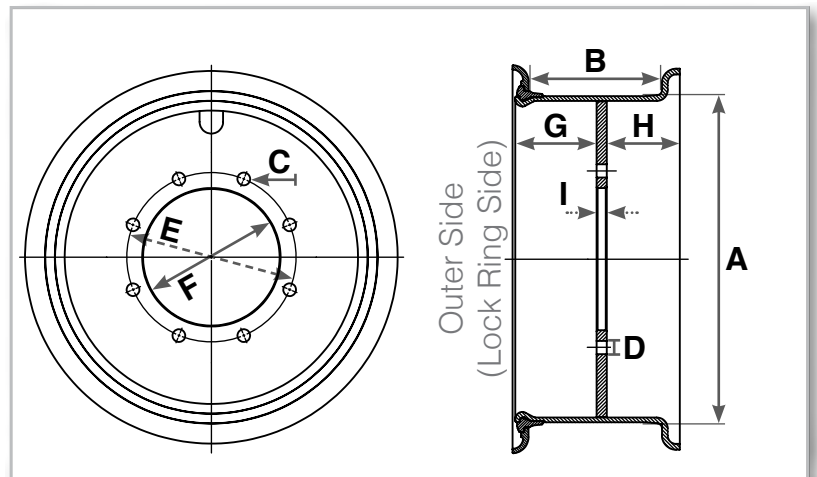
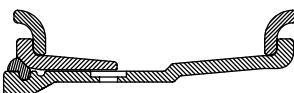
Euro

HDM

3-Piece Tubetype 4-Piece Tubetype



5-Piece Tubeless



Fill out form, then scan or photograph or fax to GMI Wheels for order assistance.

TUBETYPE WHEELS/RIMS

2-PIECE

2

3-PIECE

2-3

4-PIECE

4

TUBELESS WHEELS/RIMS

1-PIECE

3° - 5° 6

1-PIECE

15° 7

3-PIECE

EM 7

3-PIECE

10 BAR 8

3-PIECE

T 8

5-PIECE

EM 10 - 11

5-PIECE

EV 14

5-PIECE

HD 15

5-PIECE

FTF 16 - 17

6 & 7-PIECE

HD 18

6-PIECE SPEEDY

FTF 20

6 & 7 PIECE SPEEDY

FTF 21

USA

775.778.3410

400 FRONT ST., ELKO, NV, 89801

CANADA

604.538.0058

100 - 20329 LOGAN AVE., LANGLEY, BC, V3A 4L8, CANADA

INDONESIA

0542.874097

JL. KOL. SYARFUDDIN YONES, RT. 75, BALIKPAPAN, KALIMANTAN TIMUR, 76115



2-PIECE TUBETYPE

WHEELS

LW SERIES



WHEEL SIZE	TIRE SIZE	PART NUMBER	SIDE RING
20 x 6.5	900 - 200	WA2 - 2065 - KAC	SR - 6520LWE
20 x 7.0	900/10.00 - 20	WA2 - 2070 - KAC	SR - 6520LWE
20 x 7.5	10.00 - 20	WA2 - 2075 - KAC	SR - 7520LWE
20 x 8.0	1000/12.00 - 20	WA2 - 2080 - KAC	SR - 8020LWE
24 x 8.5	12.00 - 24	WA2 - 2085 - KAC	SR - 8024LWE



3-PIECE TUBETYPE

WHEELS

KB SERIES

SIZE	TIRE SIZE	PART NUMBER	SIDE RING	LOCK RING
15 x 10.5	35/15 - 15	WA3 - 15105 - KB	SR - 6515 - KB	LR - 15 - KB
20 x 6.5	825 - 20	WA3 - 2065 - KB	SR - 6520 - KB	LR - 20 - KB
20 x 7.0	900 - 20	WA3 - 2070 - KB	SR - 7520 - KB	LR - 20 - KB
20 x 7.5	10.00 - 20	WA3 - 2075 - KB	SR - 7520 - KB	LR - 20 - KB
20 x 8.0	10.00/12.00 - 20	WA3 - 2080 - KB	SR - 8020 - KB	LR - 20 - KB
20 x 8.5	12.00 - 20	WA3 - 2085 - KB	SR - 8020 - KB	LR - 20 - KB
24 x 8.0	12.00 - 24	WA3 - 2480 - KB	SR - 8024 - KB	LR - 24 - KB
24 x 8.5	12.00 - 24	WA3 - 2485 - KB	SR - 8024 - KB	LR - 24 - KB
24 x 10	14.00 - 24	WA3 - 2410 - KB	SR - 8024 - KB	LR - 24 - KB



3-PIECE TUBETYPE

WHEELS

WI SERIES

SIZE	TIRE SIZE	PART NUMBER	SIDE RING	LOCK RING
20 x 8.5	12.00 - 20	WA3 - 2085 - KAA	SR - 20WI	LR - 20WIA
20 x 10	14.00 - 20	WA3 - 2010 - KAA	SR - 20WI	LR - 20WIA
24 x 8.5	12.00 - 24	WA3 - 2485 - KAA	SR - 8524WID	LR - 24WIA
24 x 10	14.00 - 24	WA3 - 2410 - KAA	SR - 1024WID	LR - 24WIA



RIMS

WI SERIES

SIZE	TIRE SIZE	PART NUMBER	SIDE RING	LOCK RING
20 x 10	14.00 - 20	RA3 - 2010 - KAA	SR - 20WI	LR - 20WIA
24 x 8.5	12.00 - 24	RA3 - 2485 - KAA	SR - 8524WID	LR - 20WIA
24 x 10	14.00 - 24	RA3 - 2410 - KAA	SR - 1024WID	LR - 20WIA



OTR WHEEL HARDWARE

Don't roll out without the right hardware!

Global Mining Products' convenient selection of quality nuts, bolts, studs, and clamps work great on GMI Wheels products, as well as any other wheel/rim brand. Contact us today to learn more!



USA: 775.778.3410

1.877.576.2855

CAN: 604.538.0058

4-PIECE TUBETYPE

Available as
Rim Shells



WHEELS

KG SERIES 10 BAR

SIZE	TIRE SIZE	PART NUMBER	SIDE RING	BEAD RING	LOCK RING
8 x 3.0	500 - 8	WA4 - 0830 - KG	SR - 3008 - KG	BR - 3008 - KG	LR - 3008 - KG
8 x 4.33	16 x 6 - 8	WA3 - 08433 - KD *3-Piece*	SR - 4308 - KG	BR - 3008 - KG	LR - 4308 - KG
	18 x 7 - 8				
	150/75 - 8				
	180/70 - 8				
9 x 4.0	600 - 9	WA4 - 0940 - KG	SR - 4009 - KG	BR - 4009 - KG	LR - 4009 - KG
9 x 6.0	21/8 - 9	WA4 - 0960 - KG	SR - 4009 - KG	BR - 4009 - KG	LR - 4009 - KG
10 x 5.0	650 - 10	WA4 - 1050 - KG	SR - 5010 - KG	BR - 5010 - KG	LR - 5010 - KG
10 x 6.5	23/9 - 10	WA4 - 1065 - KG	SR - 5010 - KG	BR - 5010 - KG	LR - 5010 - KG
	200/50 - 10				
12 x 5.0	700 - 12	WA4 - 1250 - KG	SR - 5012 - KG	BR - 5012 - KG	LR - 5012 - KG
12 x 8.0	27/10 - 12	WA4 - 1280 - KG	SR - 8012 - KG	BR - 8012 - KG	LR - 8012 - KG
15 x 5.5	700 - 15	WA4 - 1555 - KG	SR - 6015 - KG	BR - 97515 - KG	LR - 7015 - KG
15 x 6.0	825 - 15	WA4 - 1560 - KG	SR - 6015 - KG	BR - 97515 - KG	LR - 7015 - KG
15 x 6.5	825 - 15	WA4 - 1565 - KG	SR - 6015 - KG	BR - 97515 - KG	LR - 7015 - KG
15 x 7.0	28/9 - 15	WA4 - 1570 - KG	SR - 7015 - KG	BR - 97515 - KG	LR - 7015 - KG
15 x 7.5	250 - 15	WA4 - 1575 - KG	SR - 7015 - KG	BR - 97515 - KG	LR - 8015 - KG
15 x 8.0	300 - 15	WA4 - 1580 - KG	SR - 8015 - KG	BR - 97515 - KG	LR - 8015 - KG
15 x 9.75	32/12.1 - 15	WA4 - 15975 - KG	SR - 7015 - KG	BR - 97515 - KG	LR - 7015 - KG
	28/12.5 - 15				
20 x 7.5	10.00 - 20	WA4 - 2075 - KG	SR - 8020 - KG	BR - 20 - KG01	LR - 20 - KG
20 x 8.0	12.00 - 20	WA4 - 2080 - KG	SR - 8020 - KG	BR - 20 - KG01	LR - 20 - KG
24 x 10	14.00 - 24	WA4 - 2480 - KG	SR - 1024 - KG	BR - 24 - KG01	LR - 24 - KG



"GET THE GOOD STUFF"

TIRE & TUBE MOUNTING COMPOUND

Goes on smooth and its rust inhibiting ingredients help keep rims smooth too! Available in two formulas:
Classic: Dilutable and can be used as a packing gel.
Premium: Heat resistant and won't leave residue.





**WHEELS BIG AND SMALL,
WE BUILD THEM ALL.
CUSTOM WHEELS FOR
ALL OTR APPLICATIONS.**

**CONTACT THE GMI WHEELS TEAM AT 1.877.576.2855
TO GET ROLLING WITH THE INDUSTRY'S BEST WHEELS**

1-PIECE TUBELESS

WHEELS

3 - 5° BEAD TAPER



SIZE	TIRE SIZE	PART NUMBER
12 x 7.0	23/10.5 - 12	W1 - 1270 - AA
12 x 8.5	26/12 - 12	W1 - 1285 - AA
15 x 8.0	27/9.50 - 15	W1 - 1580 - AA
15 x 13	31/15.5 - 15	W1 - 1513 - AA
16 x 5.5	7.50 - 16	W1 - 1655 - AA
16 x 8.0	11.00 - 16	W1 - 1680 - AA
16.1 x 11	14L - 16.1	W1 - 16111 - AA
18 x 9.0	10.5/80 - 18	W1 - 1890 - AA
18 x 11	12.5/80 - 18	W1 - 1811 - AA
20 x 8.0	900 - 20 11.25	W1 - 2080 - AA
20 x 11	16.00 - 20	W1 - 2011 - AA
24 x 9.0	14.00 - 24	W1 - 2490 - AA
24 x 10	12.4 - 24	W1 - 2410 - AA
24 x 13	14.9 - 24	W1 - 2413 - AA
24 x 15	17.5 - 24	W1 - 2415 - AA
24 x 16	19.5 - 24	W1 - 2416 - AA
25 x 13	15.5R25	W1 - 2513 - AA
25 x 24	17.5/25	W1 - 2524 - AA
26 x 20	23.1 - 26	W1 - 2620 - AA
26 x 25	28L - 26	W1 - 2625 - AA
28 x 12	13.6 - 28	W1 - 2812 - AA
28 x 15	16.9 - 28	W1 - 2815 - AA
30 x 15	16.9 - 30	W1 - 3015 - AA
30 x 20	23.1 - 30	W1 - 3020 - AA
32 x 21	24.5 - 32	W1 - 3221 - AA
32 x 27	30.5 - 32	W1 - 3227 - AA
32 x 31	35.5 - L32	W1 - 3231 - AA
38 x 12	14.9 - 38	W1 - 3812 - AA



1-PIECE TUBELESS

WHEELS

15° BEAD TAPER

WHEEL SIZE	TIRE SIZE	PART NUMBER
16.5 x 8.25	10 - 16.5	W1 - 165825 - AI
16.5 x 9.75	12 - 16.5	W1 - 165975 - AI
17.5 x 6.75	8.75 - 17.5	W1 - 175675 - AI
17.5 x 10.5	14 - 17.5	W1 - 175105 - AI
19.5 x 6.75	245/70R19.5	W1 - 195675 - AI
19.5 x 12.25	14R19.5	W1 - 1951225 - AI
20.5 x 14	18R20.5	W1 - 20514 - AI
20.5 x 18	24R20.5	W1 - 20518 - AI
22.5 x 7.5	10R22.5	W1 - 22575 - AI
22.5 x 8.25	11R22.5	W1 - 225825 - AI
22.5 x 9.0	315 65 22.5	W1 - 22590 - AI
22.5 x 11.75	39/15 - 22.5	W1 - 2251175 - AI
22.5 x 12.25	18R22.5	W1 - 2251225 - AI
22.5 x 13	18R22.5	W1 - 22513 - AI
22.5 x 14	18R22.5	W1 - 22514 - AI
26.5 x 24	700/50 - 26.5	W1 - 26524 - AI



3-PIECE SOLID / TUBELESS

WHEELS

EM SERIES

SIZE	TIRE SIZE	PART NUMBER	FLANGE	LOCK RING
25 x 19	23.5 - 25	WA3 - 2519 - AH	FL - 3025	LR - 25EM
25 x 22	26.5 - 25	WA3 - 2522 - AH	FL - 3025	LR - 25EM
25 x 25	29.5 - 25	WA3 - 2525 - AH	FL - 3025	LR - 25EM

3-PIECE TUBELESS

WHEELS

EM SERIES 10 BAR

SIZE	TIRE SIZE	PART NUMBER	FLANGE	LOCK RING
20 x 7.5	10.00 - 20	WA3 - 2075 - AH	FL - 1520EM	LR - 20EM
20 x 8.0	12.00 - 20	WA3 - 2080 - AH	FL - 1520EM	LR - 20EM
20 x 8.5	12.00 - 20	WA3 - 2085 - AH	FL - 1520EM	LR - 20EM
24 x 8.5	12.00 - 24	WA3 - 2485 - AH	FL - 1524EM	LR - 24EM
24 x 10	14.00 - 24	WA3 - 2410 - AH	FL - 1524EM	LR - 24EM



WHEELS

T SERIES



SIZE	TIRE SIZE	PART NUMBER	FLANGE	LOCK RING
24 x 8.0	12.00 - 24	WA3 - 2480 - AB	FL - 8024TG	LR - 8024TG
24 x 10	14.00 - 24	WA3 - 2410 - AB	FL - 1524T	LR - 1024TG
25 x 10	14.00 - 25	WA3 - 2510 - AB	FL - 1525T	LR - 25T
25 x 12	15.5 - 25	WA3 - 2512 - AB	FL - 1525T	LR - 25T
25 x 14	17.5 - 25	WA3 - 2514 - AB	FL - 1525T	LR - 25T
25 x 17	20.5 - 25	WA3 - 2517 - AB	FL - 1525T	LR - 25T
25 x 36	66/43 - 25	WA3 - 2536 - AB	FL - 1525T	LR - 25T



TUBELESS FORKLIFT WHEELS THAT RISE ABOVE THE REST

FOR ALL MAKES, INCLUDING

KALMAR
TAYLOR
TEREX

HYSTER
FANTUZZI



FORGED GUTTER DISC

EM SERIES LOCK RING

Thicker and stronger than OEM or competing brands, improving fit, lifespan and safety.

THICKER SIDE RING

3 SERIES O-RING

HEAVY DUTY BUILD

Forged, fully machined single piece gutter section and disc.

10 BAR/150 PSI RATED

BEST COMPONENT & TIRE FIT

Fully supports tire beads for complete seal. No component movement or flex.



OEM Formed Disc
3-Piece



GMI Wheels FGD
3-Piece



Punched, formed disc creates slight curvature; not 100% flat face.

Cost effective forming process renders steel more liable to fatigue.

Forged steel's high tensile strength and integrity is unmatched by other metalwork procedures. 100% machined finish provides flat disc surfaces.

5-PIECE EM SERIES

WHEELS

EM SERIES



SIZE	TIRE SIZE	PART NUMBER	SIDE RING	BEAD BAND	LOCK RING
24 x 9	12.00 - 24	WA5 - 2490 - AH	SR - 1524	BB - 24EM	LR - 24EM
24 x 10	13.00 - 24 14.00 - 24 16.00 - 24 385/95R24 445/95R24 445/95R25	WA5 - 2410 - AH	SR - 2024	BB - 24EM	LR - 24EM
25 x 10	14.00 - 25 14.00R25 385/95R25	WA5 - 2510 - AH	SR - 1525	BB - 25EM	LR - 25EM
25 x 11.25	16.00 - 25 16.00R25	WA5 - 2511 - AH	SR - 2025	BB - 25EM	LR - 25EM
25 x 13	18.00 - 25	WA5 - 2513 - AH	SR - 2525	BB - 25EM	LR - 25EM
25 x 14	17.5 - 25 445/80R25 17.5R25	WA5 - 2514 - AH	SR - 1525	BB - 25EM	LR - 25EM
25 x 15	21.00 - 25	WA5 - 2515 - AH	SR - 3025	BB - 25EM	LR - 25EM
25 x 17	20.5 - 25 505/80R25 525/80R25 550/65R25 20.5R25 24.00 - 25	WA5 - 2517 - AH	SR - 1525 SR - 2025	BB - 25EM	LR - 25EM
25 x 19.5	23.5 - 25 600/65R25 650/65R25	WA5 - 2519 - AH	SR - 2525	BB - 25EM	LR - 25EM
25 x 22	26.5 - 25 705/65R25 750/65R25 30/65R25 85/80R25 75/70R25	WA5 - 2522 - AH	SR - 3025	BB - 25EM	LR - 25EM
25 x 24	750/65R25	WA5 - 2524 - AH	SR - 3025	BB - 25EM	LR - 25EM
25 x 25	29.5 - 25 775/70R25 29.5/70R25 850/65R25	WA5 - 2525 - AH	SR - 3525	BB - 25EM	LR - 25EM

TIRE SIZES MAY VARY AMONG MANUFACTURERS.
CONTACT GMI WHEELS TO ENSURE CORRECT FITMENT.



SALES@GMIWHEELS.COM

5-PIECE EM SERIES

WHEELS

EM SERIES

SIZE	TIRE SIZE	PART NUMBER	SIDE RING	BEAD BAND	LOCK RING
25 x 30	67/3400-25	WA5 - 2530 - AH	SR - 1525	BB - 25EM	LR - 25EM
29 x 17	24.00 - 29	WA5 - 2925 - AH	SR - 3529	BB - 29EM	LR - 29EM
29 x 25	29.5 - 29	WA5 - 2925 - AH	SR - 3529	BB - 29EM	LR - 29EM
29 x 27	33.25 - 29	WA5 - 2927 - AH	SR - 3529	BB - 29EM	LR - 29EM
33 x 13	18.00 - 33	WA5 - 3313 - AH	SR - 2533	BB - 33EV	LR - 33EM
33 x 15	21.00 - 33	WA5 - 3315 - AH	SR - 3033	BB - 33EV	LR - 33EM
33 x 28	35/65R33	WA5 - 3328 - AH	SR - 3533	BB - 33EVL	LR - 33EM
33 x 28	33.25 - 33	WA5 - 3328 - AH	SR - 4033	BB - 33EVL	LR - 33EM
33 X 32	37.5R33	WA5 - 3332 - AH	SR - 4533	BB - 33EV	LR - 33EM
35 x 15	21.00 - 35	WA5 - 3515 - AH	SR - 3035	BB - 35EV	LR - 35EM
35 x 17	24.00 - 35	WA5 - 3517 - AH	SR - 3535	BB - 35EV	LR - 35EM
35 x 27	33.25 - 35	WA5 - 3527 - AH	SR - 3535	BB - 35EV	LR - 35EM
35 x 31	37.25 - 35	WA5 - 3531 - AH	SR - 3535	BB - 35EV	LR - 35EM
39 x 32	37.5 - 39	WA5 - 3932 - AH	SR - 3539	BB - 39EM	LR - 39EM
	40/65 - 39				
	41.25/70 - 39				
45 x 36	45/65 - 45	WA5 - 4536 - AH	SR - 4545	BB - 45EM	LR - 45EM

RIMS

EM SERIES

SIZE	TIRE SIZE	PART NUMBER	SIDE RING	BEAD BAND	LOCK RING
24 x 10	14.00 - 24	RA5 - 2410 - A	SR - 2024	BB - 24EM	LR - 24EM
25 x 10	14.00 - 25	RA5 - 2510 - A	SR - 1525	BB - 25EM	LR - 25EM
25 x 11.25	16.00 - 25	RA5 - 2511 - A	SR - 2025	BB - 25EM	LR - 25EM
25 x 13	18.00 - 25	RA5 - 2513 - A	SR - 2525	BB - 25EM	LR - 25EM
25 x 15	21.00 - 25	RA5 - 2515 - A	SR - 3025	BB - 25EM	LR - 25EM
33 x 13	18.00 - 33	RA5 - 3313 - A	SR - 2533	BB - 33EV	LR - 33EM
35 x 15	21.00 - 35	RA5 - 3515 - A	SR - 3035	BB - 35EV	LR - 35EM
35 x 17	24.00 - 35	RA5 - 3517 - A	SR - 3535	BB - 35EV	LR - 35EM



A 3D rendered scene depicting a character with a golden halo, wearing an orange and blue uniform, focused on defusing a large, dark, cylindrical bomb. The bomb is positioned on a large, treaded tire of a yellow vehicle. The character is leaning forward, with their hands on the bomb. The vehicle's body is yellow and has a red light on its side. The background is a simple, light blue sky and a tan ground surface.

DEFUSE THE
BOMB

WHEEL SAFETY INFORMATION

ALWAYS deflate tires to **zero psi** before performing any work on a multi-piece rim assembly.

ALWAYS inspect and replace any damaged, bent, corroded or fatigued wheel/rim components.

NEVER weld or apply heat to any wheel/rim or any components.

SAFETY GUIDELINES

Servicing tires and wheels is extremely dangerous and must be performed by trained personnel using correct tools and approved procedures.

Read and understand all safety information before attempting service of wheel/rim assemblies.

Refer to the tire manufacturer's safety recommendations and procedures before installing and inflating a tire.

Always wear personal protective equipment such as safety glasses, gloves, approved footwear and head protection.

If you ever feel uncertain or unsafe when working on a wheel/rim assembly, stop and find a supervisor to provide assistance.

SITE SAFETY

Always conduct a thorough examination of your workplace, ensuring safety equipment and tools are in good condition.

Always properly block and chock heavy equipment before performing work, using correctly sized wheel chocks.

Ensure new personnel receive appropriate training and safety procedures, and work alongside experienced supervisors.

Always ensure lifting and jacking equipment is rated for the equipment's weight, and is operated on firm, level ground.

Never work alone in confined spaces or areas where hazardous motion risks can occur.

Failure to comply with established safety guidelines and procedures when working on a wheel/rim assembly can lead to death or injury.

Order a FREE 'Defuse the Bomb' site safety poster for your facilities.

Contact GMI Wheels at 1.877.576.2855 with your company and mailing address.



5-PIECE EV SERIES



WHEELS

HAULER/INDUSTRIAL

SIZE	TIRE SIZE	PART NUMBER	SIDE RING	BEAD BAND	LOCK RING
33 x 13	18.00 - 33	WA5 - 3313 - AC	SR - 2533	BB - 33EV	LR - 33EV
33 x 15	18.00 - 33	WA5 - 3315 - AC	SR - 3035	BB - 33EV	LR - 33EV
35 x 15	21.00 - 35	WA5 - 3515 - AC	SR - 3035	BB - 35EV	LR - 35EV
35 x 17	24.00 - 35	WA5 - 3517 - AC	SR - 3535	BB - 35EV	LR - 35EV
49 x 17	24.00 - 49	WA5 - 4917 - AC	SR - 3549	BB - 49EV	LR - 49EV
49 x 19.5	27.00 - 49 31/90R49	WA5 - 4919 - AC	SR - 4049	BB - 49EV	LR - 49EV
49 x 22	31.80R49	WA5 - 4922 - AC	SR - 3549	BB - 49EV	LR - 49EV



RIMS

HAULER/INDUSTRIAL

SIZE	TIRE SIZE	PART NUMBER	SIDE RING	BEAD BAND	LOCK RING
33 x 13	18.00 - 33	RA5 - 3313 - AC	SR - 2533	BB - 33EV	LR - 33EV
35 x 15	21.00 - 35	RA5 - 3515 - AC	SR - 3035	BB - 35EV	LR - 35EV
35 x 17	24.00 - 35	RA5 - 3517 - AC	SR - 3535	BB - 35EV	LR - 35EV
49 x 17	24.00 - 49	RA5 - 4917 - AC	SR - 3549	BB - 49EV	LR - 49EV
49 x 19.5	27.00 - 49 31/90R49 27.00 - 49, 31/90R49	RA5 - 4919 - AC	SR - 4049	BB - 49EV	LR - 49EV
49 x 22	31.80R49	RA5 - 4922 - AC	SR - 3549	BB - 49EV	LR - 49EV



5-PIECE HD SERIES

WHEELS

HAULER/LOADER



SIZE	TIRE SIZE	PART NUMBER	SIDE RING	BEAD BAND	LOCK RING
49 x 19.5	27.00 - 49 31/90R49	WA5 - 4919 - AL	SR - 4049	BB - 49HD	LR - 49HD
49 x 22	31.80R49	WA5 - 4922 - AL	SR - 3549	BB - 49HD	LR - 49HD
51 x 24	33.00R51	WA5 - 5124 - AL	SR - 5051	BB - 51HD	LR - 51HD
51 x 26	36.00R51	WA5 - 5126 - AL	SR - 5051	BB - 51HD	LR - 51HD
51 x 40	50/65 - 51	WA5 - 5140 - AL	SR - 4551	BB - 51HD	LR - 51HD
57 x 27	37.00R57 40.00R57 42/90R57	WA5 - 5727 - AL	SR - 6057	BB - 57HD	LR - 57HD
57 x 29	37.00R57 40.00R57 46/90R57	WA5 - 5729 - AL	SR - 6057	BB - 57HD	LR - 57HD
57 x 32	46/90R57 50/90R57	WA5 - 5732 - AL	SR - 6057	BB - 57HD	LR - 57HD
57 x 36	50/80R57	WA5 - 5736 - AL	SR - 6057	BB - 57HD	LR - 57HD
57 x 44	53.5/85R57 55/80R57 55.5/80R57	WA5 - 5744 - AL	SR - 6057	BB - 57HD	LR - 57HD
57 x 47	60/80R57 70/70R57	WA5 - 5747 - AL	SR - 5057	BB - 57HDL	LR - 57HD
57 x 52	65/65-57 70/70-57	WA5 - 5750 - AL	SR - 6057	BB - 57HDL	LR - 57HD

RIMS

HAULER/LOADER

SIZE	TIRE SIZE	PART NUMBER	SIDE RING	BEAD BAND	LOCK RING
51 x 22	30.00R51	RA5 - 5122 - AL	SR - 4551	BB - 51HD	LR - 51HD
51 x 24	33.00R51	RA5 - 5124 - AL	SR - 5051	BB - 51HD	LR - 51HD
51 x 26	36.00R51	RA5 - 5126 - AL	SR - 5051	BB - 51HD	LR - 51HD
57 x 29	37.00R57 40.00R57 46/90R57	RA5 - 5729 - AL	SR - 6057	BB - 57HD	LR - 57HD
57 x 32	46/90R57 50/90R57	RA5 - 5732 - AL	SR - 6057	BB - 57HD	LR - 57HD
57 x 34	46/90R57 50/90R57	RA5 - 5734 - AL	SR - 6057	BB - 57HD	LR - 57HD

5-PIECE FTF SERIES

WHEELS

HAULER/LOADER

SIZE	TIRE SIZE	PART NUMBER	SIDE RING	BEAD BAND	LOCK RING
25 x 25	29.5R25	WA5 - 2525 - AR	SR - 2525 - FTF	BB - 25FTF	LR - 25EMH
29 x 27	33.25 - 29	WA5 - 2927 - AR	SR - 2927 - FTF	BB - 29FTF	LR - 29EMH
33 x 13	18.00R33	WA5 - 3313 - AR	SR - 2533 - FTF	BB - 33FTF	LR - 33EMH
33 x 27	33.5 - 33	WA5 - 3327 - AR	SR - 3533 - FTF	BB - 33FTF	LR - 33EMH
45 x 36	45/65 - 45	WA5 - 4536 - AR	SR - 4545 - FTF	BB - 45FTF	LR - 45EMH
49 x 19	27.00R49	WA5 - 4919 - AR	SR - 4049 - FTF	BB - 49FTF	LR - 49EMH
49 x 22	31.80R49	WA5 - 4922 - AR	SR - 3549 - FTF	BB - 49FTF	LR - 49EMH
51 x 24	33.00R51	WA5 - 5124 - AM	SR - 5051 - FTF	BB - 51FTF	LR - 51FTF
51 x 26	36.00R51	WA5 - 5126 - AM	SR - 5051 - FTF	BB - 51FTF	LR - 51FTF
57 x 29	37.00R57	WA5 - 5729 - AM	SR - 6057 - FTF	BB - 57FTF	LR - 57FTF
	40.00R57				
	46/90R57				
57 x 32	46/90R57	WA5 - 5732 - AM	SR - 6057 - FTF	BB - 57FTF	LR - 57FTF
	50/90R57				
57 x 36	50/80R57	WA5 - 5736 - AM	SR - 6057 - FTF	BB - 57FTF	LR - 57FTF
57 x 44	53.5/85R57	WA5 - 5744 - AM	SR - 6057 - FTF	BB - 57FTF	LR - 57FTF
	55/80R57				
	55.5/80R57				
57 x 47	60/80R57	WA5 - 5747 - AM	SR - 5057 - FTF	BB - 57FTF	LR - 57FTF
	70/70R57				
57 x 60	70/70R57	WA5 - 5752 - AM	SR - 5057 - FTF	BB - 57FTF	LR - 57FTF
63 x 36	53/80R63	WA5 - 6336 - AM	SR - 5063 - FTF	BB - 63FTF	LR - 63FTF
63 x 41	56/80R63	WA5 - 6341 - AM	SR - 5063 - FTF	BB - 63FTF	LR - 63FTF
63 x 44	59/80R63	WA5 - 6344 - AM	SR - 5063 - FTF	BB - 63FTF	LR - 63FTF



5-PIECE FTF SERIES

RIMS

HAULER/LOADER

SIZE	TIRE SIZE	PART NUMBER	SIDE RING	BEAD BAND	LOCK RING
25 x 13	18.00R25	RA5 - 2513 - AR	SR - 2513 - FTF	BB - 25FTF	LR - 25EMH
33 x 13	18.00R33	RA5 - 3313 - AR	SR - 2533 - FTF	BB - 33FTF	LR - 33EMH
49 x 19	27.00 - 49	RA5 - 4919 - AR	SR - 4049 - FTF	BB - 49FTF	LR - 49EMH
49 x 22	31.80R49	RA5 - 4922 - AR	SR - 3549 - FTF	BB - 49FTF	LR - 49EMH
51 x 24	33.00R51	RA5 - 5124 - AM	SR - 5051 - FTF	BB - 51FTF	LR - 51FTF
51 x 26	36.00R51	RA5 - 5126 - AM	SR - 5051 - FTF	BB - 51FTF	LR - 51FTF
57 x 29	37.00R57	RA5 - 5729 - AM	SR - 6057 - FTF	BB - 57FTF	LR - 57FTF
	40.00R57				
	46/90R57				
57 x 32	46/90R57	RA5 - 5732 - AM	SR - 6057 - FTF	BB - 57FTF	LR - 57FTF
	50/90R57				
63 x 36	53/80R63	RA5 - 6336 - AM	SR - 5063 - FTF	BB - 63FTF	LR - 63FTF
63 x 41	56/80R63	RA5 - 6341 - AM	SR - 5063 - FTF	BB - 63FTF	LR - 63FTF



6 & 7-PIECE HD SERIES



WHEELS

HAULER/LOADER

SIZE	TIRE SIZE	PART NUMBER	SIDE RING	BEAD BAND	LOCK RING
51 x 24	33.00R51	RA6 - 5124 - AL	SR - 5051	BB - 51HD	LR - 51HD
51 x 26	36.00R51	RA6 - 5126 - AL	SR - 5051	BB - 51HD	LR - 51HD
57 x 29	37.00R57	RA6 - 5729 - AL	SR - 6057	BB - 57HD	LR - 57HD
	40.00R57				
	46/90R57				
57 x 32	46/90R57	RA6 - 5732 - AL	SR - 6057	BB - 57HD	LR - 57HD
57 x 34	46/90R57	RA6 - 5732 - AL	SR - 6057	BB - 57HD	LR - 57HD



RIMS

HAULER/INDUSTRIAL

SIZE	TIRE SIZE	PART NUMBER	SIDE RING	BEAD BAND	LOCK RING
51 x 24	33.00R51	RA7 - 5124 - AL	SR - 5051	BB - 51HD	LR - 51HD
51 x 26	36.00R51	RA7 - 5126 - AL	SR - 5051	BB - 51HD	LR - 51HD
57 x 29	37.00R57	RA7 - 5729 - AL	SR - 6057	BB - 57HD	LR - 57HD
	40.00R57				
	46/90R57				
57 x 32	46/90R57	RA7 - 5732 - AL	SR - 6057	BB - 57HD	LR - 57HD
57 x 34	46/90R57	RA7 - 5732 - AL	SR - 6057	BB - 57HD	LR - 57HD



TIRE SIZES MAY VARY AMONG MANUFACTURERS.
CONTACT GMI WHEELS TO ENSURE CORRECT FITMENT.



SALES@GMIWHEELS.COM

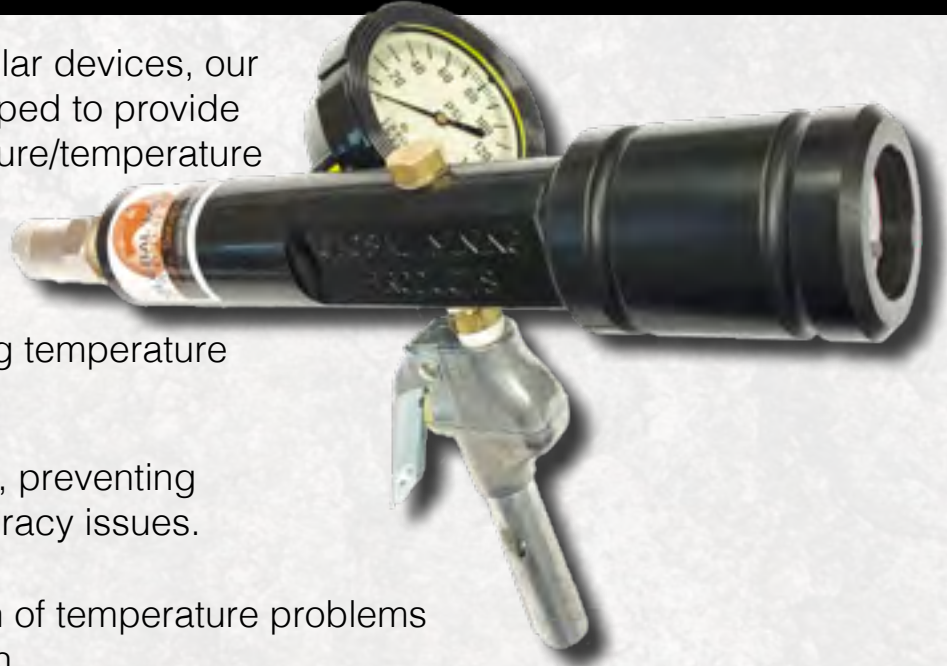
PRESSURE TEMPERATURE GAUGE

One of Global Mining's most popular devices, our PT Gauge was specifically developed to provide fast, reliable and simple tire pressure/temperature readings.

PT Gauges are manufactured using special materials, minimizing temperature transfer for accurate readings.

A rubber boot provides protection, preventing contamination, clogging and accuracy issues.

- Fast readings and identification of temperature problems
- Quality, lightweight construction
- Special material for limited transfer of external, outdoor temperature
- Easy-to-read, accurate and contaminant-resistant gauges
- User-friendly



PART NUMBER	DESCRIPTION
GAU - 10016	Lock-on Chuck - psi
GAU - 10017	Lock-on Chuck - kpa
GAU - 10020	Whip hose w/ Lock-on Chuck - psi
GAU - 10021	Whip hose w/ Lock-on Chuck - kpa

OTR WHEEL STANDS

Many wheel/rim failures are caused by incorrect tire mounting or improperly fitting components!

GMI Wheels' variety of **Wheel Stands** make tire mounting a safe, easy process. Wheel/rim bases and components are lifted off the ground, helping to keep grime, dirt and material out of grooves, off of rings and away from tire beads.

The back beads of the tire and side ring fit into position easily, and bead seat bands fall into place, making O-Ring installation seamless and less likely to pinch your fingers!



6-PIECE FTF SPEEDY SERIES

WHEELS

LOADER/INDUSTRIAL



SIZE	TIRE SIZE	PART NUMBER	SIDE RING	BEAD BAND	LOCK RING
45 x 36	45/65R45	WA6 - 4536 - AR	SR - 4545 - FTF	BB - 45FTF	LR - 45EMH
57 x 36	50/80R57	WA6 - 5736 - AM	SR - 6057 - FTF	BB - 57FTF	LR - 57FTF
57 x 44	53.5/85R57 55/80R57 55.5/80R57	WA6 - 5744 - AM	SR - 6057 - FTF	BB - 57FTF	LR - 57FTF
57 x 47	60/80R57 70/70R57	WA6 - 5747 - AM	SR - 6057 - FTF	BB - 57FTF	LR - 57FTF



RIMS

LOADER/INDUSTRIAL

SIZE	TIRE SIZE	PART NUMBER	SIDE RING	BEAD BAND	LOCK RING
45 x 36	45/65R45	RA6 - 4536 - AR	SR - 4545 - FTF	BB - 45FTF	LR - 45EMH
57 x 36	50/80R57	RA6 - 5736 - AM	SR - 6057 - FTF	BB - 57FTF	LR - 57FTF
57 x 44	53.5/85R57 55/80R57 55.5/80R57	RA6 - 5744 - AM	SR - 6057 - FTF	BB - 57FTF	LR - 57FTF
57 x 47	60/80R57 70/70R57	RA6 - 5747 - AM	SR - 6057 - FTF	BB - 57FTF	LR - 57FTF



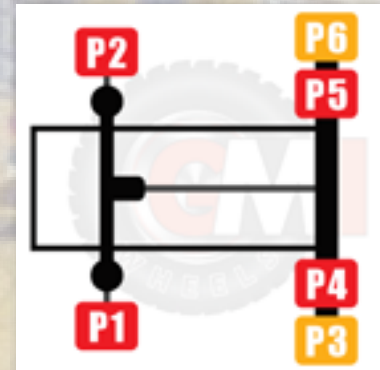
6/7-PIECE FTF SPEEDY SERIES



WHEELS

HAULER

SIZE	POS.	TYPE	TIRE SIZE	PART #	SIDE RING	BEAD BAND	LOCK RING
57 x 29	1/2/4/5	6 Piece	37.00R57 40.00R57	WA6 - 5729 - AM	SR - 6057FTF	BB - 57FTF	LR - 57FTF
	3/6	7 Piece	46/90R57	WA7 - 5729 - AM			
57 x 32	1/2/4/5	6 Piece	46/90R57	WA6 - 5732 - AM	SR - 6057FTF	BB - 57FTF	LR - 57FTF
	3/6	7 Piece	50/90R57	WA7 - 5732 - AM			
63 x 36	1/2/4/5	6 Piece	53/80R63	WA6 - 6336 - AM	SR - 5063FTF	BB - 63FTF	LR - 63FTF
	3/6	7 Piece		WA7 - 6336 - AM			
63 x 41	1/2/4/5	6 Piece	56/80R63	WA6 - 6341 - AM	SR - 5063FTF	BB - 63FTF	LR - 63FTF
	3/6	7 Piece		WA7 - 6341 - AM			
63 x 44	1/2/4/5	6 Piece	59/80R63	WA6 - 6344 - AM	SR - 5063FTF	BB - 63FTF	LR - 63FTF
	3/6	7 Piece		WA7 - 6344 - AM			



RIMS

HAULER

SIZE	POS.	TYPE	TIRE SIZE	PART #	SIDE RING	BEAD BAND	LOCK RING
57 x 29	1/2/4/5	6 Piece	37.00R57 40.00R57	RA6 - 5729 - AM	SR - 6057FTF	BB - 57FTF	LR - 57FTF
	3/6	7 Piece	46/90R57	RA7 - 5729 - AM			
57 x 32	1/2/4/5	6 Piece	46/90R57	RA6 - 5732 - AM	SR - 6057FTF	BB - 57FTF	LR - 57FTF
	3/6	7 Piece	50/90R57	RA7 - 5732 - AM			
63 x 36	1/2/4/5	6 Piece	53/80R63	RA6 - 6336 - AM	SR - 5063FTF	BB - 63FTF	LR - 63FTF
	3/6	7 Piece		RA7 - 6336 - AM			
63 x 41	1/2/4/5	6 Piece	56/80R63	RA6 - 6341 - AM	SR - 5063FTF	BB - 63FTF	LR - 63FTF
	3/6	7 Piece		RA7 - 6341 - AM			
63 x 44	1/2/4/5	6 Piece	59/80R63	RA6 - 6344 - AM	SR - 5063FTF	BB - 63FTF	LR - 63FTF
	3/6	7 Piece		RA7 - 6344 - AM			

GMI WHEELS O-RINGS

MEMO-RINGS

MEMORY O-RINGS

GMI Wheels proudly introduces our exclusive **MemO-Ring** lineup.

Unlike conventional O-Rings, **MemO-Ring's** resist pressure and temperature fluctuations in their wheel groove, retaining their shape and pliability for **long-lasting air seal**.

Over time, conventional O-Ring's will take on the shape of the components adjacent to them, due to pressure, and repeated heating and cooling cycles.

In the event of component movement, the conventional O-Ring remains mis-shapen, unable to maintain an air seal, leading to loss of tire pressure.

MemO-Ring's resilience allows them to adapt to component movement, maintaining air seal more readily than conventional counterparts.



AVAILABLE FROM: 20" x 3/8" — 63" x 1/2"



3 Series



4 Series

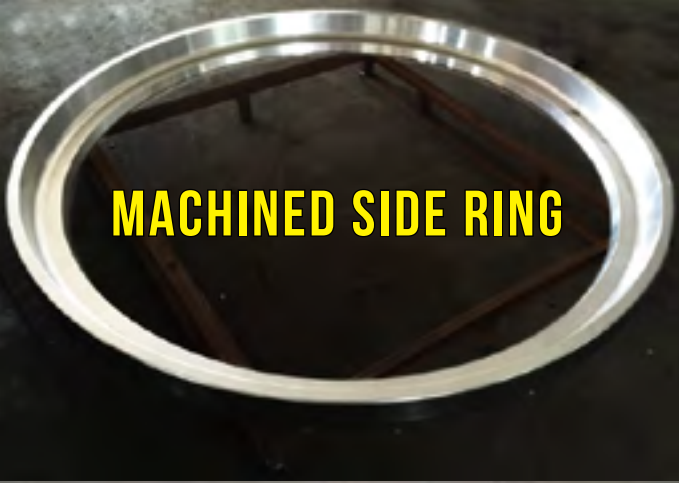
Warped conventional O-rings that have taken the shape of their adjacent components and will not seal tire pressure properly if those components shift.



MemO-Ring's will retain their original shape.



WHAT'S INSIDE A GM WHEEL?



MACHINED SIDE RING



MACHINED BEAD SEAT BAND



ASSEMBLED & RE-MACHINED

GM WHEELS SAV-IT VALVE

*Blows its top...
Before your tires do!*



SAV-iT VALVE

GM Wheels' Sav-iT Valve is a pressure/temperature sensitive rupture disc that releases hot air in emergency situations.

In events such as internal tire fires, pyrolysis, or external heat caused by brakes or equipment fires, the Sav-iT valve quickly vents out tire pressure before a detonation occurs, saving lives and equipment.

We strongly recommend including Sav-iT valves with every purchase of a wheel or rim 49-inches or above.



USA: 775.778.3410

1.877.576.2855

CAN: 604.538.0058

JACKING EQUIPMENT

CERTIFIED JACK STANDS

THE INDUSTRY'S MOST ADVANCED

Australian designed and built to meet AS/NZS2693:2007 standard for vehicle jacks **and AS/NZS2538:2004 standard for vehicle support stands.**

The jack stand uses **patented oil-bathed internal locking quadrants** that are constantly energised during the lifting process to give a fail safe operation. This **locking mechanism automatically engages** in the unlikely event of a hydraulic failure.

All this capability comes in a compact footprint, for user-friendly maneuverability throughout the job site. **POWERDRIVE** can be optioned for power assisted movement via two lightweight batteries, further enhancing mobility.



TONNAGES

75T 150T
110T 200T

STROKES

16" 21"

OPTIONS

Power Drive Wheels 6" & 12" Extensions
Swivel Saddles Fork Pockets

MODULAR JACK SYSTEMS

AIR OR HYDRAULIC PUMP MODULES

GMI Wheels proudly offers a selection of modular jack systems, boasting **incredible flexibility** and **industry-renowned** reliability.

With **load-holding rings**, the lift module is **capable of supporting 2.5 times** its rated capacity. Optional extensions increase the effective retracted height of the lift module up to an additional 20 inches. A **swivel saddle reduces adverse effects of angled jacking** surfaces up to 5 degrees.

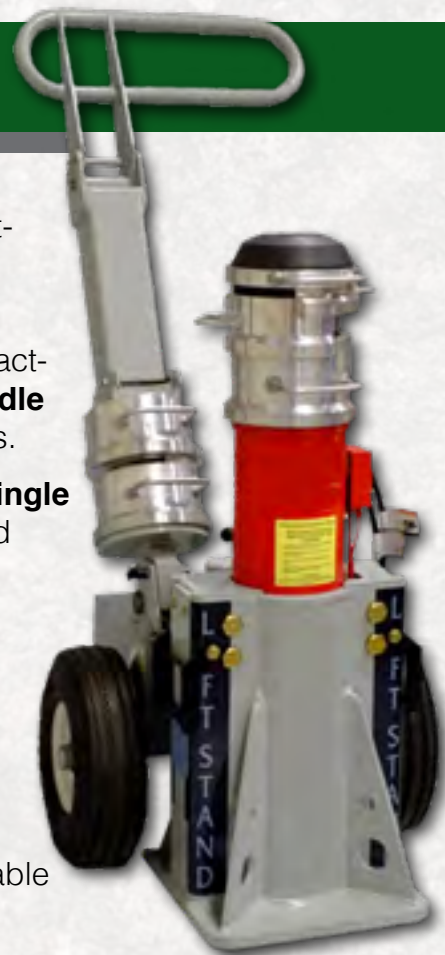
Features a **manifold capable of operating two lift modules with a single pump**. Once a load is lifted, the pump may be disconnected and used elsewhere, enhancing convenience and site-wide utility.

TONNAGES

60T: 13" , 16" , 24" strokes
100T: 16" , 18" , 24" strokes
175T: 13" , 15" , 17" , 24" strokes

OPTIONS

Air or Electric Configurations Additional Lifting Capacity Available
Suspension Adapters Load Holding Rings
Lift Module Transport Units Extensions & Bases





CRACK TESTING

DON'T LET BAD WHEELS SLIP THROUGH THE CRACKS

GMI Wheels' proactive Crack Testing procedure detects wheel fractures and irregularities before they become dangerous. Cracked wheels can cause air loss, component failure or catastrophic failure, leading to loss of life and property damage. Our modern Non-Destructive Testing (NDT) process provides piece of mind and safety, at an affordable price.

EVERY GMI WHEELS CRACK TEST INCLUDES

- A stringent inspection of each wheel/rim base and a visual analysis of its accompanying components.
- An easy-to-read **PASS/FAIL** report complete with images, in print and digital formats.
- Efficient turnaround times.

Considering a site-wide inspection program? Contact GMI Wheels to learn how we can assist in creating a regimen tailored for your operation.



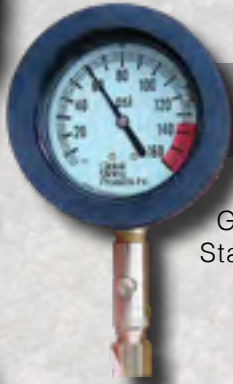
TIRE, TOOL & MASTER GAUGES

PRECISION QUALITY

Global Mining Products' array of gauges are engineered to provide maximum accuracy while operating in challenging environments. Our user-friendly designs are easy-to-read, with many variants including glow-in-the-dark faces.



TIRE GAUGES



GAU-10006
Standard face



GAU-10005
Upside down face

- 0 - 160 PSI; redline at 135 PSI
- Accuracy: +/- 1% of full scale
- Push-button air release
- Pressure stop release
- Easy-to-read glow in the dark face
- Anti-contaminant protective rubber boot
- Easy grip hose and handle

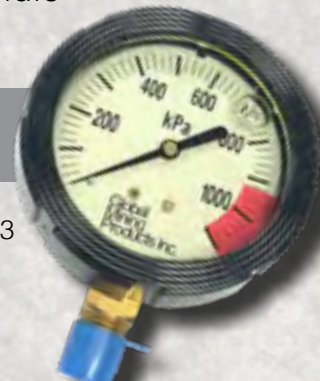
MASTER GAUGE



GAU-10000

- 0 - 200 PSI
- Accuracy suitable for use as a shop's pressure master gauge.
- Fully-filled liquid gauge
- Large, easy-to-read face
- 1/4" lower mount

TOOL GAUGE



GAU-10003

- 0 - 110 PSI with 90 PSI redline
- Accuracy: +/- 1% of full scale
- Anti-contaminant protective rubber boot
- Fully filled liquid gauge
- Easy-to-read glow in the dark face
- 1/4" lower mount

SAFERLIFT JACK STANDS

MAKE YOUR SITE SAFER THAN EVER

STYLES

Adjustable Height (with 6" - 12" extensions)
Fixed Height
Fixed Height - Quadrangular Tube

TONNAGES

20T - 350T

LIFT POINTS

Customizable. Contact us!



SALES@GMIWHEELS.COM



Rim

A base that supports the tire, and is clamped onto a cast wheel.

Wheel

A base that supports the tire, but includes a **disc** with stud holes. Nuts are used to hold the wheel onto the machine's hub.

Assembly

A wheel/rim base that includes its associated components.

O-Ring

Not counted as an assembly component, the O-Ring is a pliable rubber ring that is fitted onto a tubeless wheel/rim to seal in air.

Bead Band

Wheel/rim assembly component that the tire bead seats onto. May also be referred to as a **Bead Ring** in forklift applications.

Side Ring

Wheel/rim assembly component that tire beads rest against. Also called a **flange**.

Lock Ring

A sprung component which holds a complete, inflated assembly together. **This component must properly match the wheel/rim base or the components will be dangerously unsecured.**

Tube-Type Wheel/Rim

A style of wheel/rim that requires an inner tube to hold air, which a tire is mounted over top of. Common in forklift applications.

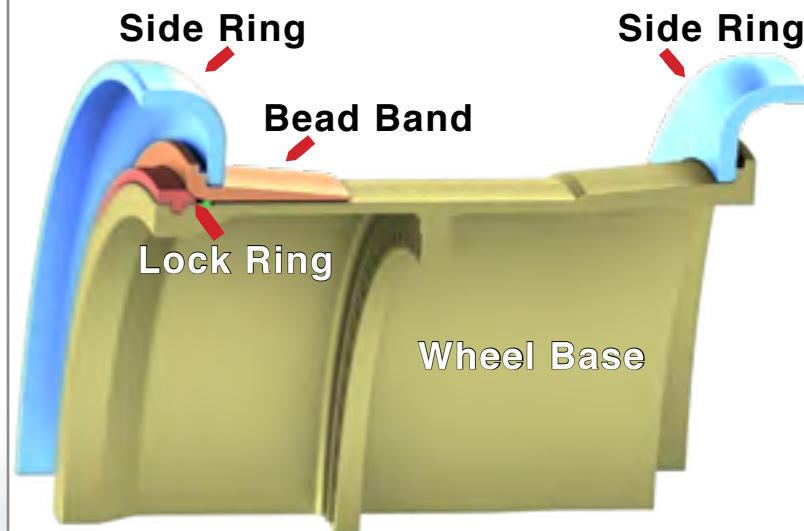
Tubeless Wheel/Rim

A wheel/rim lacking a tube, instead requiring an O-Ring.

WHEEL/RIM COMPONENTS



Multi-piece wheels/rims typically range between two to seven components per assembly. Below is a five-piece wheel often used on earthmoving equipment.



GMI WHEELS RIMTIONARY

LOCK RING PROFILES

Lock Rings are designed to specifically match their corresponding wheel/rim bases and is termed a 'Lock Ring Profile.' Below is an example of a Lock Ring that properly matches its corresponding groove in the wheel base.

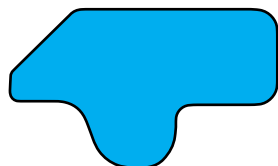
The red Lock Ring is perfectly seated and fastened in its groove. Note how each of its angles properly synchronizes with the other components.

Ensure the proper Lock Ring is matched to the correct wheel/rim base prior to installation. Always keep different Lock Ring types separate from each other.



Below are just a few of the Lock Ring Profile styles that exist.

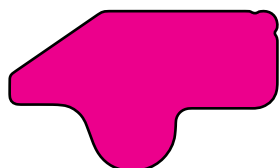
TUBELESS LOCK RINGS



HD Profile



EMH Profile



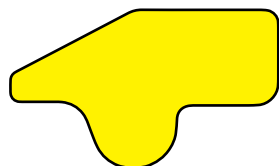
HD 35° Profile



EM Profile



EV Profile

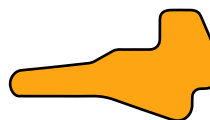


FTF 28° Profile



T Profile

TUBE-TYPE LOCK RINGS



KB Profile - 3pc

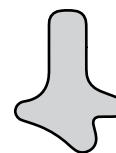


WI Profile - 3pc

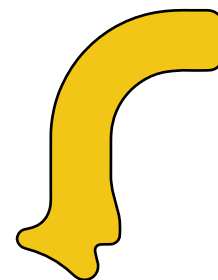


KG Profile - 4pc

KD Profile - 3pc



MD Profile - 3pc



LV/LW Profile - 2pc

GMI WHEELS RIMTIONARY

LOCK RING SAFETY

Visual Inspection

Whether it's used or new, a Lock Ring must always be visually inspected prior to installation.

Begin by verifying the size of the gap is less than half an inch, or within the Lock Ring manufacturer's guidelines. Lock Rings lose tension over use, widening the gap

Always discard fatigued Lock Rings that have a gap that is a half inch or more, or follow the guidelines provided by the Lock Ring manufacturer.



Pre-Installation Cleaning

Debris caught between the Lock Ring and the wheel/rim base can prevent the Lock Ring from properly seating in its groove.

Prior to installing a Lock Ring, scrub the Lock Ring groove with a wire brush to remove debris, grime and corrosion.



SAFERLIFT JACKS

CUSTOMIZABLE & AFFORDABLE

TONNAGES

100T ▪ 125T
150T ▪ 175T
200T

LIFT POINTS

27" 38"
Custom lift points
available

OPTIONAL EQUIPMENT

Power Drive Wheels
Foam Fill Tires
Fork Receivers
Pressure Gauge

LED Lighting
Locking Collars
Line Remote

**DON'T FORGET THE SAFERLIFT
JACK STANDS FOR EVEN MORE
SITE SAFETY!**



USA: 775.778.3410

CAN: 604.538.0058

29



WHEELS THAT RISE ABOVE THE REST

GMIWHEELS.COM

1.877.576.2855

A WORLD OF SELECTION AT GLOBAL MINING PRODUCTS

GMP Corporate Catalog
OTR Wheel Inflation Hardware
Tire Repair Equipment
Tire Repair

RAD Torque Tools Catalog
Wheel Bolting Tools
Pneumatic, Electric & Battery
Calibration & Repair

