



Fourthane® | Silver

SILVER LINE F- 6665-10





## RECOGNITIONS

GANADOR 2013  
**pro|CHILE**



GANADOR 2012 - 2013  
**Mejor Innovación  
Industrial en Chile**

**OUR MISSION IS TO PROVIDE QUALITY,  
SUSTAINABLE, INNOVATIVE, AND  
WORLD-CLASS PRODUCTS AND SERVICES THAT  
ENSURE THE AVAILABILITY AND RELIABILITY  
OF MINING AND INDUSTRIAL PRODUCTS.**

**PRESENCE IN MORE THAN 40 COUNTRIES**



## TECHNICAL DATA SHEET

Two-component polymeric putty, reinforced with elastic loads, thixotropic, black color. With good thermal, mechanical stress and impact resistance.

### USE IN CONCENTRATOR PLANTS:

- Transfer chutes, feed, pant
- Splitter box
- Spool
- Cyclones, Hydrocyclones
- Concentrator and Oxide Plant Wear Components
- Sifters
- Ball and Sag Mills
- Coating on feed chutes.
- Helical trunnion feed helicals.
- Trommel diagonals.
- Sealing of feed and discharge cover in Ball and Sag Mills.
- Pernery.
- Magnetic trunnion protection, helical discharge protection.
- Pulplifter union seal



### FEATURES AND BENEFITS

- Thixotropic epoxy, no sag on vertical walls or overhead (Non Sag Putty).
- Easy to mix and use, ideal for maintainers.
- Excellent adhesion on metal, concrete and ceramic
- Reinforced with rubber beads.

**FOURTHANE SILVER**, also stands out for its chemical resistance to high concentrations of reagents used in concentrator plants.

## FICHA TÉCNICA

### INSTRUCTIONS FOR USE

**FOURTHANE SILVER**, is specially designed to be used at a ratio of 1:0.8 by weight. Both components should be mixed until a homogeneous mass of uniform color is achieved.

The success of the protection of components and/or equipment with **FOURTHANE SILVER** will depend to a great extent on a correct preparation of the surface. For this reason, it is important that all applications begin with a thorough preparation, **DECAPING** the surface with an electric grinder using a grinding disc (SSPC-SP-3), Remove all dirt, and any remaining coating or loose surface with a proper mechanical technique. (SSPC-SP-2). Repairs should be made as soon as possible to prevent rusting.

Mixing of **FOURTHANE SILVER** should be carried out by adding the hardener to the resin. The mixing process is completed when the product has a uniform appearance. Failure in this process of mixing the material will cause soft spots or a general failure of the product. Mixing time should be 3 to 5 minutes.

Once homogeneously mixed, without leaving gray traces of **FOURTHANE SILVER**, the applicator should, with a 4" spatula, take the material to the surface to be coated, applying the first thin layer of approximately 2 mm of **FOURTHANE SILVER**, completing the application with thickness according to the defined application.

#### HOW TO ACCELERATE THE SETTING OF EPOXY POLYMERIC COMPOSITES AT LOW TEMPERATURES?

- Store the epoxy in a range of 25C° to 30C°.
- Preheat the surface to be repaired until it is warm to the touch.

#### HOW TO DECREASE THE SETTING OF EPOXY POLYMERIC COMPOSITES AT HIGH TEMPERATURES?

- Mix the epoxy in small masses to prevent too fast setting.
- Cool the resin and hardener components (15C<sup>a</sup> to 20 C<sup>a</sup>).

### SHELF LIFE / STORAGE

- The product has a shelf life of one (1) year stored in the original unopened container, in a covered warehouse at room temperature between 20 °C and 30 °C.
- Proper storage and handling of the product may extend the shelf life. For safety details refer to product MSDS

## TECHNICAL DATA SHEET

### PRECAUTIONS

Do not get in contact with skin, eyes or clothing. Do not ingest. Avoid inhalation of vapors. Wear a positive pressure respirator when working with fire, welding or torching near the set component. Wear a respirator with dust filter when grinding or machining the set product. For more details, please refer to Product Safety Data Sheet.

The greater the mass of material mixed, the faster the setting and reaction temperature. If mixing large quantities, start applying the product before the exothermic reaction reaches its peak (reaction onset 15 to 20 minutes).

For technical assistance contact us at [support@fourthane.com](mailto:support@fourthane.com)

### NOTE:

- Surface conditions vary with each application.
- Obtain a smooth, even finish after the final filler coat of FOURTHANE SILVER filler with the use of FOURTHANE EZ-FINISH.

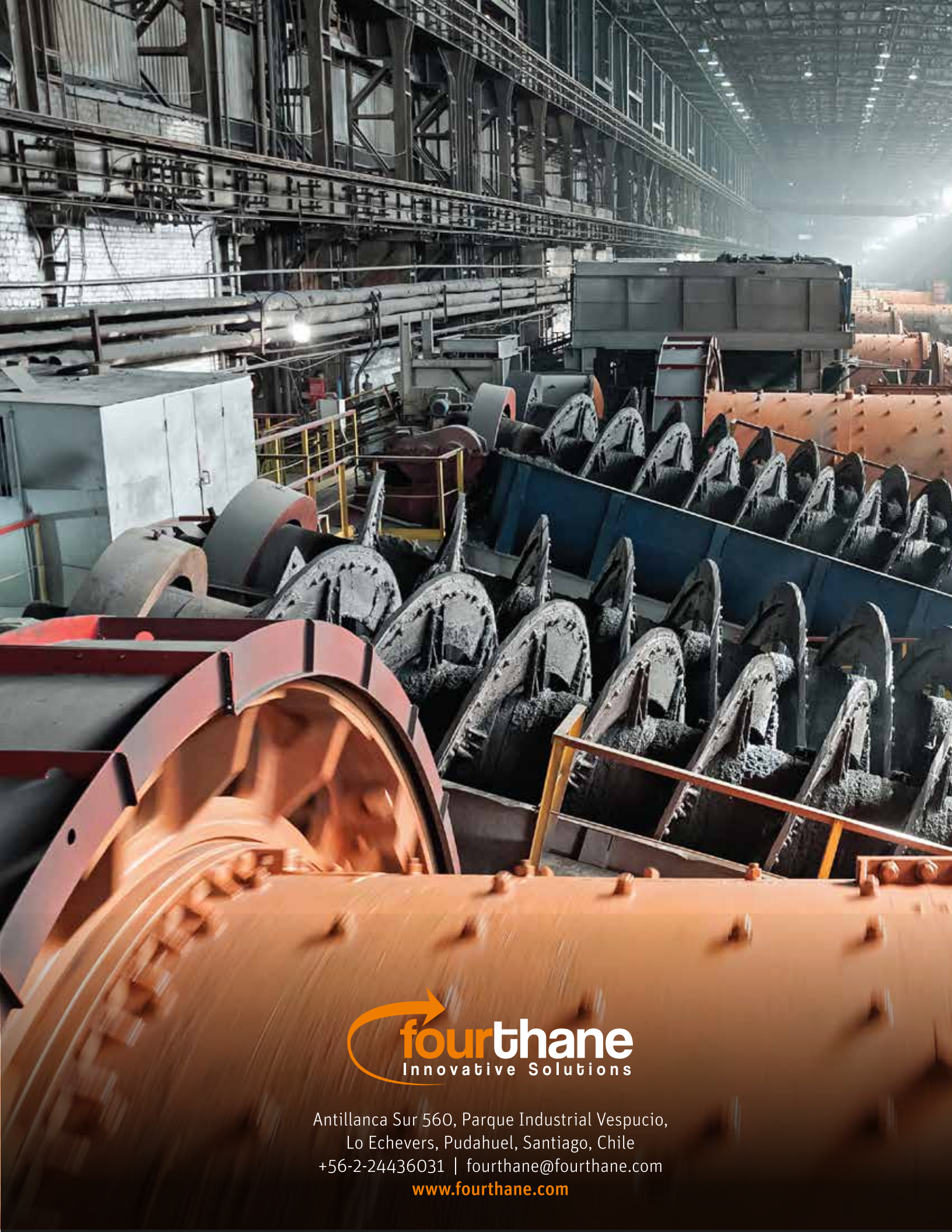
# TECHNICAL DATA SHEET

## PHYSICAL PROPERTIES

COLOR	BLACK	
COMPRESSIVE STRENGTH	8960 PSI	ASTM D695
PERFORMANCE	8,6 SQ.FT @1/4"	0,8 M2 @ 6 MM.
SHORE HARDNESS	70 D	ASTM D2240
TOTAL CURE	8 HRS (75 F°)	8 HRS (23 C°)
FUNCTIONAL CURE (23 C°)	4 HRS (75 F°)	4 HRS (23 C°)
MIX TO VOLUME RATIO	1:0,8	
MIX TO WEIGHT RATIO	1:0,8	
VISCOSITY	NO RUN OFF PASTE	
VERTICAL APPLICATION	UP TO 1" PER LAYER	UP TO 25 MM PER LAYER
POT LIFE @ 75 F (23 C°)	2 HRS	
RECOATING TIME	2 HRS BEFORE APPLYING NEW COAT OF 1" OR SMALLER	
% SOLIDS	100	
DENSITY	64.9 LB / CU.FT	1,04 GR / CC
SPECIFIC VOLUME	26,6 CU.FT	961 CC / KG
OPERATING RANGE	-76 F° - 104 F°	-60 C° / 60 C°
IMPACT RESISTANCE	4950 LB IN	560 N-M
ABRASION RESISTANCE (CS17)	137 MG	ASTM D3389
FORMATS	BUCKETS OF 11 LB	BUCKETS OF KG
	POTS OF DE 5,5 LB	POTS OF 2,5 KG

FOURTHANE LTDA. is the leading company in innovation and in the development of solutions for repair of conveyor belts and concentrator plants, with more than 25 years of presence in the Chilean market, has managed to position its products with great success and excellent results in the large national mining companies.

OUR MISSION is to provide maintenance solutions that maximize mining and industrial equipment availability.



Antillanca Sur 560, Parque Industrial Vespucio,  
Lo Echevers, Pudahuel, Santiago, Chile  
+56-2-24436031 | [fourthane@fourthane.com](mailto:fourthane@fourthane.com)  
[www.fourthane.com](http://www.fourthane.com)