

浙江鸿飞机械制造有限公司是中国领先的耐磨铸件制造企业。公司位于浙江省兰溪市。专业生产高锰钢，高铬铸铁，合金钢等破碎机配件，年产量15000多吨。产品用于：颚式破碎机、圆锥式破碎机、冲击式破碎机、球磨机、雷蒙磨机、制砂机等各类机型。我公司为矿山、砂石、水泥、城市矿山、化工等行业服务20多年。主要产品有：颚板，轧臼壁，破碎壁，板锤，锤头，衬板，磨辊，磨环等。公司拥有5万多平方米的综合生产基地，公司员工230多人，拥有30多人的技术、研发、品管团队。

为更好的服务客户，公司配备齐全的设备，主要有：中频电炉，砂处理设备造型线、多台热处理炉（配500吨水韧水池），加工设备有：龙门铣床、立车、端面铣、磨床、镗床等。严把质量关，公司下设：光谱化学分析室，力学硬度分析室、金相分析室，把每一批合格的产品交到客户手中。

安全和质量永远是我们的主要任务，我们每年都投入资金来升级生产设备及人员培训，以确保鸿飞的可持续发展。为保证您选择到合适的耐磨件，我们的客户服务团队和产品工程师随时欢迎您的电话和在线咨询。为保证产品顺畅的安装、卓越的性能、精致的外观、按时的交付，我们每天都在努力。

Hongfei Machinery Manufacturing Co.,Ltd is located in Lanxi City,Zhejiang Province as a leading manufacturer of wear-resistant castings in China . We specializes in the production of high manganese steel, high chromium cast iron, alloy steel and other crusher accessories, annual output more than 15,000 tons. Our products are served for jaw crusher, cone crusher, impact crusher, ball mill, Raymond mill, sanding machine and other types of machines in mining, sand, cement, chemical industries more than 20 years.The main products are: jaw plate, mantle, bowl line, hammer, blow bar, liner,roller, mill ring etc.Company has a comprehensive production base of more than 50,000 square meters, with over 230 employees and more than 30 technical, R&D and QC teams.

In order to provide better service, HF keep update equipment timely. We have medium frequency induction furnaces, sand treatment equipment and molding line,heat treatment furnaces (with 500 tons of water toughening pool). Machining equipment as gantry milling machines, vertical lathes,facing cut, grinding machine, boring machine, etc. We also own test labs as spectral chemistry analysis room, mechanical hardness analysis room, metallographic test room to make sure each batch of qualified products delivered to customers.

Safety and quality are always our main tasks, as we invest money every year to upgrade production equipment and safety training to ensure the sustainable development of HF, to ensure that you choose the right wear-resistant parts.Our customer service team and engineers are always welcome your call and consult online.We keep improving every day to reach proper installation, excellent performance, refined appearance and timely delivery goals.

COMPANY OVERVIEW

公司概况



OUR TEAM

我们的团队

We have vigorous sales team 9 people

We have professional foundryman 120 people

We have responsibility QC department 15 people

We have reliable finance department 10 people

We have careful warehouse keepers 3 people

我们有强大的销售团队

我们有专业的铸造工人120人

我们有责任qc部门15人

我们有可靠的财务部门10人

我们有三个安全的仓库管理员



鸿飞成长史

HISTORY

发展历程

1991

In 1991, the company was founded in Guangxi province of China. Started to engage in producing mining machinery wear-resistant castings

公司前身在中国广西省创立，开始从事矿山机械耐磨铸件的生产。

2006

In 2006, the company moved to Zhejiang province and upgraded our products, supplying world-renowned brands such as ESCO.

公司回迁浙江省，产品升级，给美国ESCO等全球知名品牌供货。

2012

In 2012, the company developed rapidly, expanded new plant and facilities

公司飞速发展，购买新的土地，筹建新的工厂。

2014

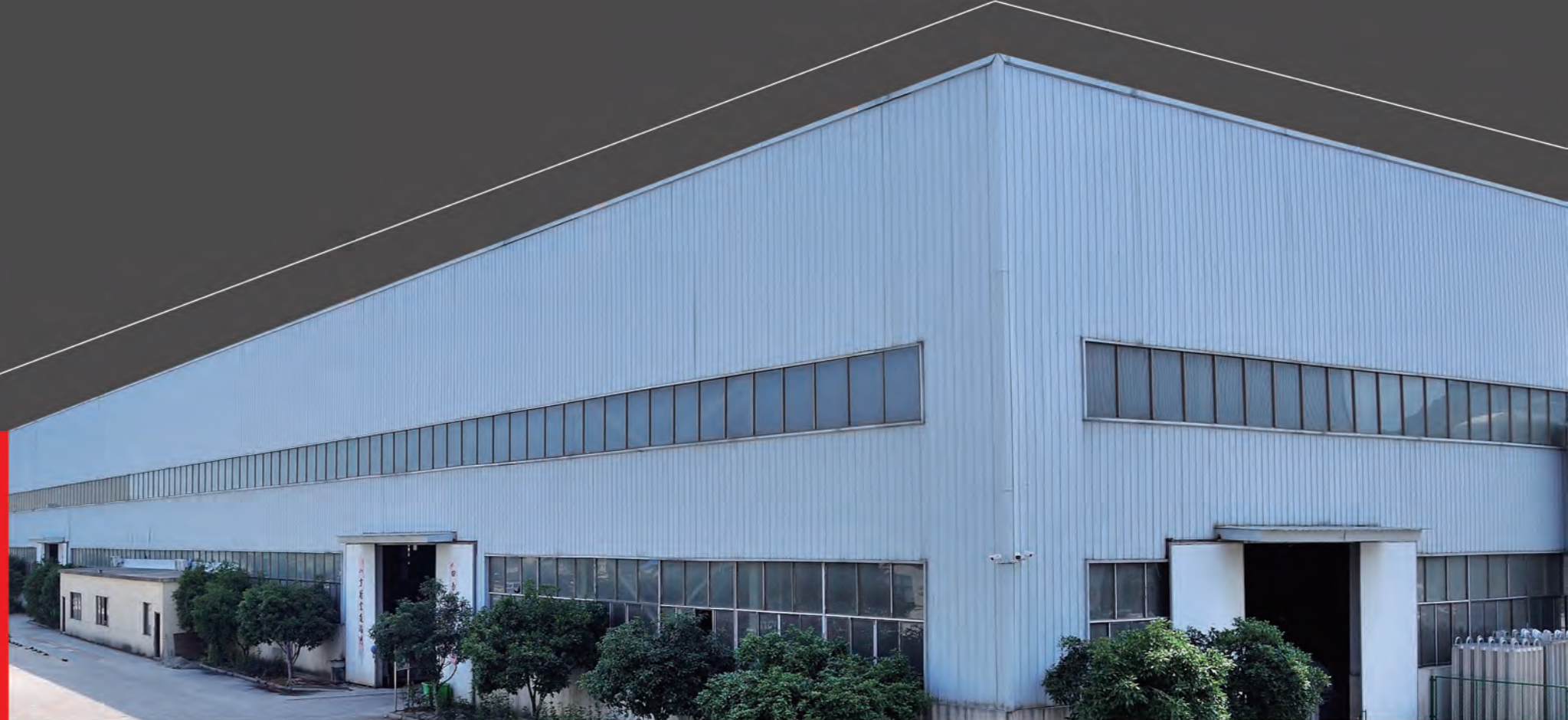
In 2014, the company was completed and the products were upgraded again, aiming to serve the industries of mines, gravel, metal crushing and so on.

新公司落成，产品再次升级，旨在服务于全球矿山、砂石料、金属破碎等行业。

2018

In 2018, after years of efforts, the company has established a complete quality and production system to guarantee the delivery time and established long-term supply agreements with company in Japan, Australia, the United States, South Africa, southeast Asia, Africa and so on. Company annual output breakthrough 15,000 tons/year.

经过多年的努力，公司已经组建完整的质量和生产体系，保证客户的交货期。和日本、澳大利亚、美国、南非、东南亚、非洲等公司建立长期供货协议，产量突破15000吨/年。



PRODUCTION PLANT AREA DISTRIBUTION

生产厂区分布



模型制作区
Model production area



造型区
Shape area



浇铸区
Cast area



清砂区
Sand clearing area



热处理区
Heat treatment area



机加工区
Machine-processing area



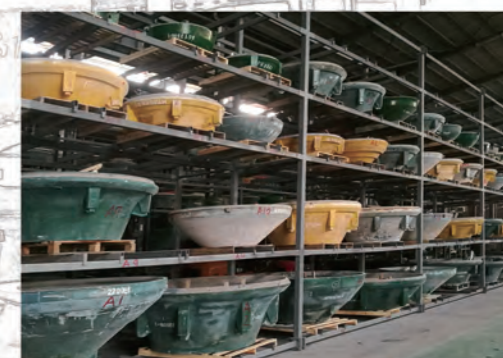
检验区
Inspection area



喷涂区
Spray area



等待发货区
Waiting area



模具库区
Mold library area

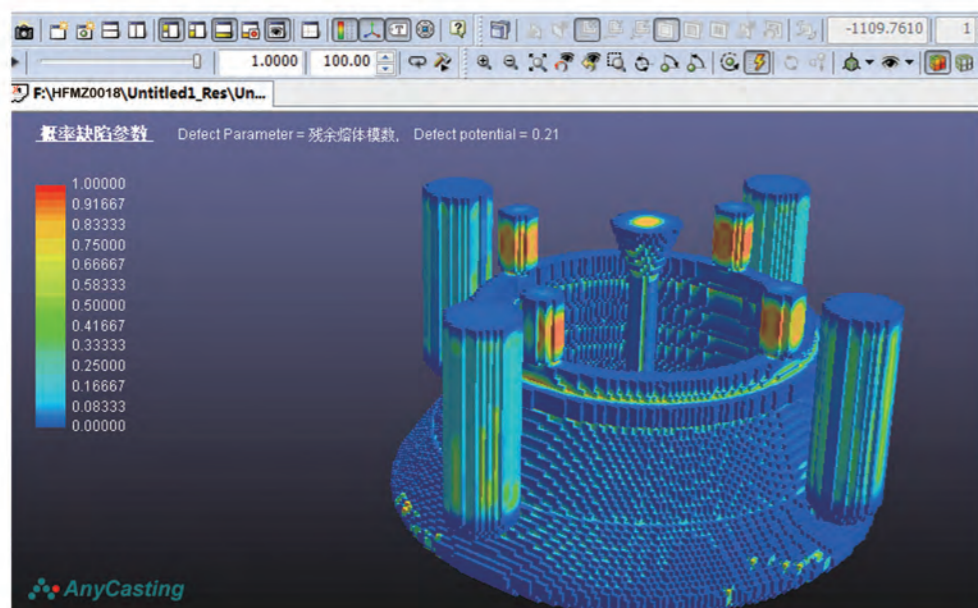


SUBTLE DETECTION

细微检测

Equips specialist laboratory, introduces advanced experimental facility and technology, processes world-leading examination and management technique. We are capable of environment simulation test. As domestically leading inspection center of castings and relative products, we deeply know that every client has the most demanding requirements to their products. So we always regard quality assurance as the most crucial part of whole production process.

拥有专业的实验室，主要设备和技术均系国外引进，拥有世界先进的检测和管理技术，能模拟环境试验，是国内一流的铸件及相关产品的检测中心，我们深深了解每一位顾客对产品的期盼和近乎挑剔的要求，所以，我们把生产过程的质量控制作为整个流程的灵魂环节。



JAW CRUSHER SPARE PARTS

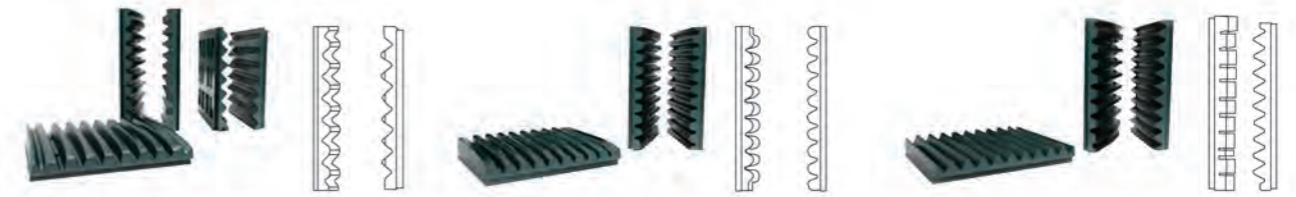
颞式破碎机配件

Hongfei's jaw plate and cheek plate is manufactured with high manganese steel of Manganese 13%-30% or as per client requirement and through special heat-treatment process. It has a service life 10% longer than those made of traditional high manganese steel. As per the feedback from customers, the good performance of our jaw plate in different working condition greatly decreased the time of examination and repair and the use-cost.

颞板是颞式破碎机的主要磨损部件，分为动颞板和定颞板，鸿飞公司可以根据用户的颞式破碎机型号的不同，生产各种型号尺寸的颞板。我们主要采用含锰量为13%-30%的高锰钢及超高锰钢材质，并采用特有的热处理方式，使得我司生产的每一块颞板在不同的工况条件下都具有极强的耐磨性和使用寿命。根据客户反馈，鸿飞公司的颞板使用寿命比普通颞板高出10%-20%，让用户停机检修和更换配件的时间大幅减少，极大的降低了用户的使用成本，提高了综合经济效益。



APPLICATIONS					
Jaw Plate Profile	Recycling	Soft-Med Rock	Hard Rock	River Gravel	Asphalt
Super Tooth		✓	✓	✓	✓
Quarry Toth		✓	✓		✓
Standard Tooth	✓	✓		✓	
Multi Tooth	✓				
Heavy Duty			✓	✓	



Standard

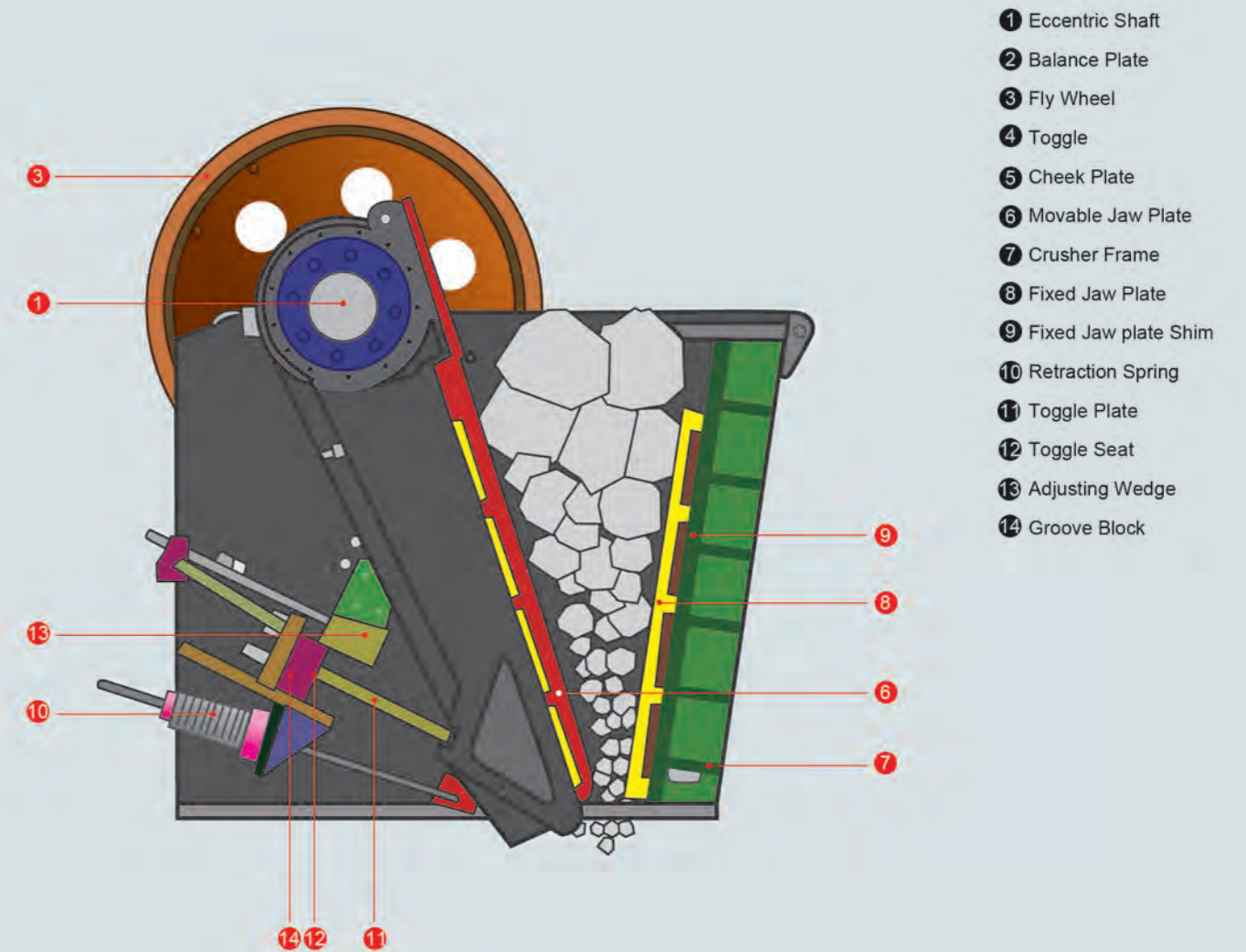
- Good in gravel and non abrasive rock
- Tooth spacing ideal for fines removal
- Power requirement and crushing stresses are in balance
- Less slabby product
- Reduced lifetime in abrasive application

Superteeth

- General use in gravel and blasted rock
- Tooth spacing ideal for fines removal
- More tooth contact surface area compared to standard profile
- More wearable Mn-steel than in standard jaws
- Power requirement and crushing stresses are in balance
- Less slabby product

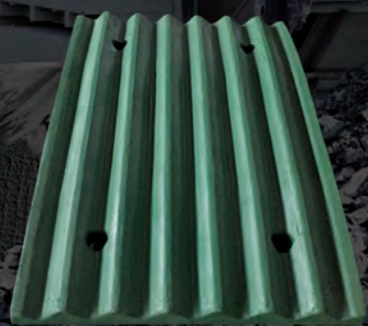
Quarry thick + Super grip

- Good in blasted rock, difficult natural rock and slippery rock
- Sharp tooth profile (good grip on the rock)
- Power requirement and crushing stresses are in balance
- Tooth spacing ideal for fines removal
- Can be used when scalping is not efficient
- Less slabby product

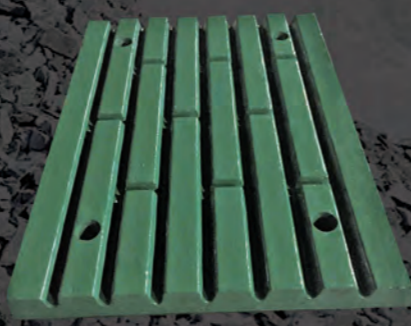


JAW CRUSHER SPARE PARTS

颞式破碎机配件



Jaw Plate 颞板



Jaw Plate 颞板



Jaw Plate 颞板



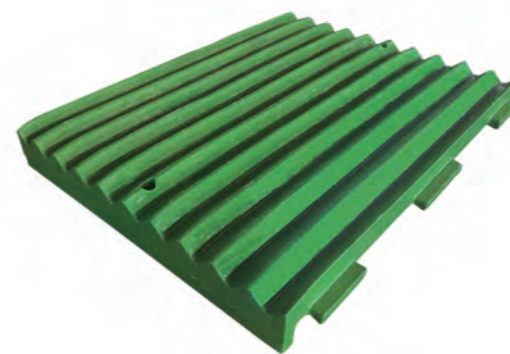
Jaw Plate 颞板



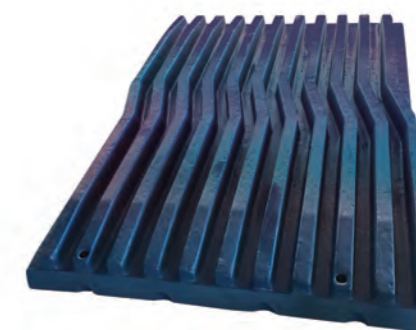
Jaw Plate 颞板



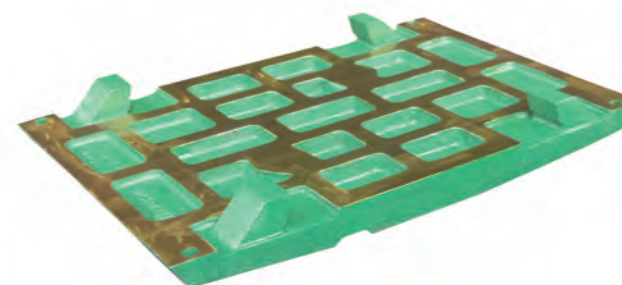
Jaw Plate 颞板



Jaw Plate 颞板



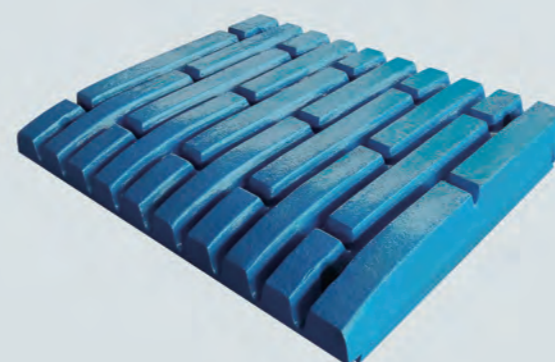
Jaw Plate 颞板



Jaw Plate 颞板



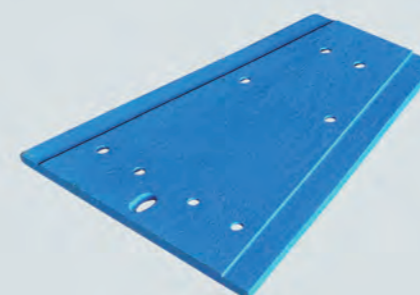
Jaw Plate 颞板



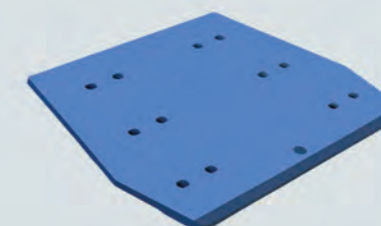
Jaw Plate 颞板



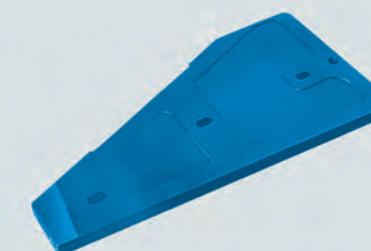
Jaw Plate 颞板



Side plate 边护板



Side plate 边护板



Side plate 边护板

CONE CRUSHER WEAR PARTS

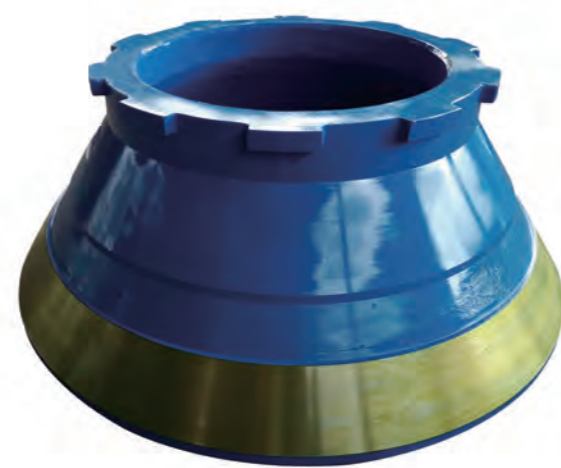
圆锥式破碎机配件

Mantle and bowl liner are the main wearing parts for cone crusher. Hongfei can manufacture numerous models of concave and mantles for cone crusher. For the material of concave, Hongfei use the Hadifield-steel, like Mn13Cr2, Mn18Cr2, Mn22Cr2, to ensure the wear resistance. Our cone parts are widely used on mining, construction, chemical, cement and metallurgical industry. After the modification treatment, combining with the special processing techniques, concave have a service life 10%-15% longer than those made of traditional materials.

轧臼壁和破碎壁是圆锥破碎机的主要磨损部件。我司可根据客户使用的不同机型生产与之配套的轧臼壁和破碎壁。我司主要采用高锰钢材质，如：Mn14Cr2, Mn18Cr2, Mn22Cr2等，既实现了机器使用过程中的稳定性和安全性，又保证了配件的使用寿命和耐磨性能。根据各种工况条件下的使用情况和客户反馈，鸿飞公司生产的轧臼壁和破碎壁配件比普通配件的使用寿命延长了10-15%。



Bowl Liner 圆锥



Bowl Liner 圆锥



Bowl Liner 圆锥



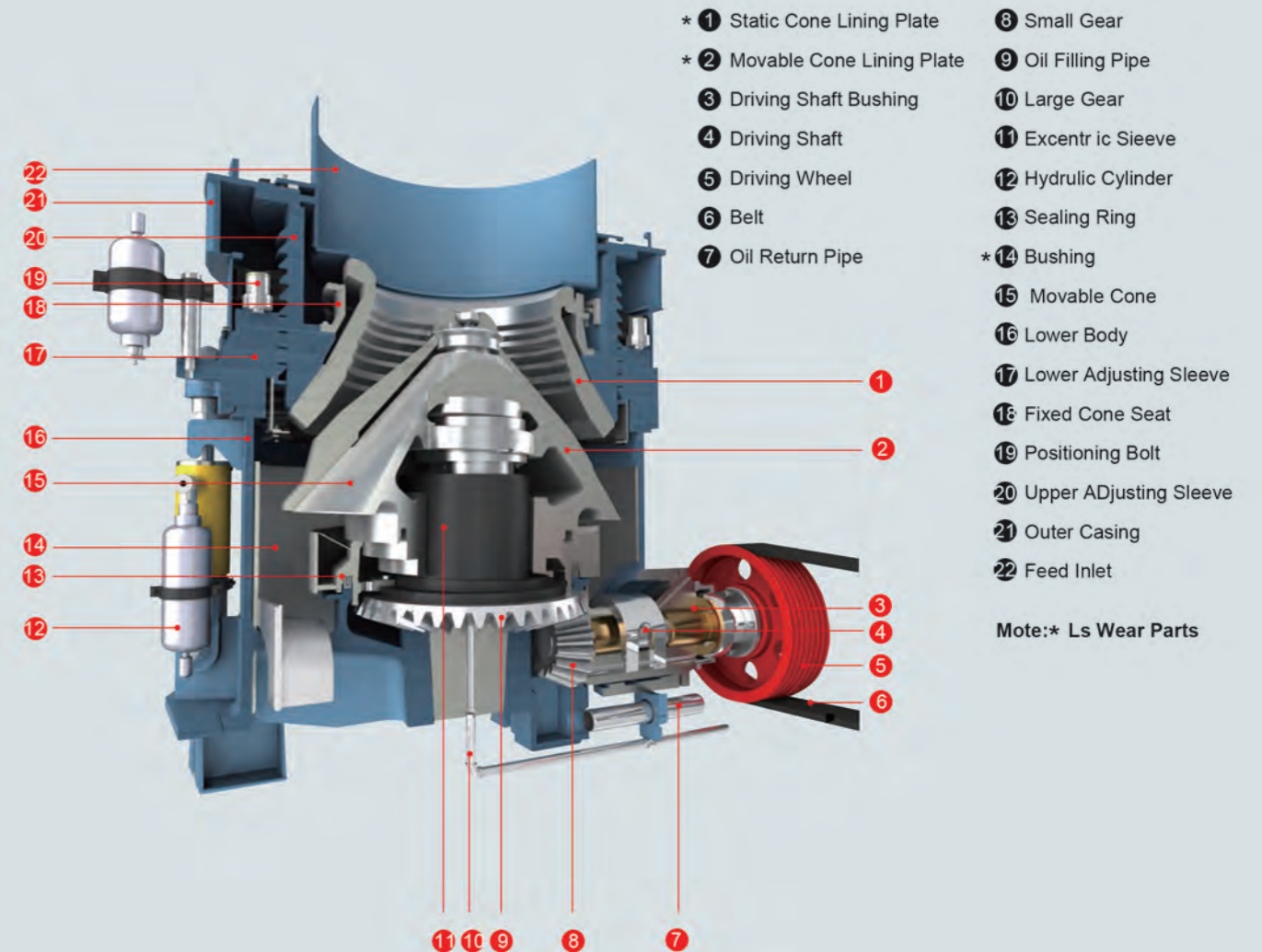
Bowl Liner 圆锥



Bowl Liner 圆锥



Bowl Liner 圆锥



CONE CRUSHER WEAR PARTS

圆锥式破碎机配件



Bowl Liner 圆锥



Bowl Liner 圆锥



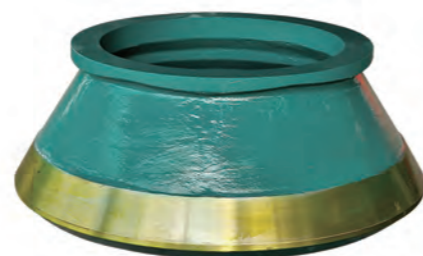
Bowl Liner 圆锥



Bowl Liner 圆锥



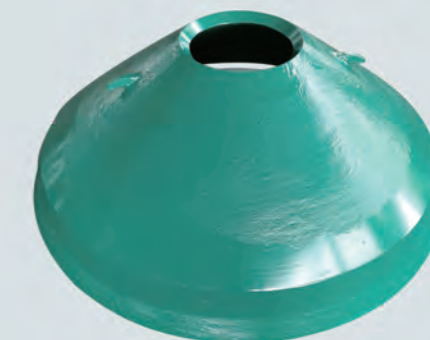
Bowl Liner 圆锥



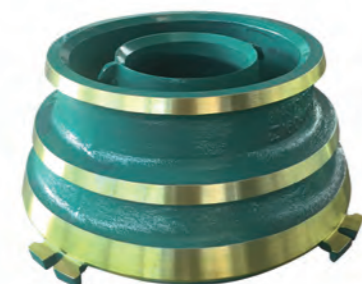
Bowl Liner 圆锥



Bowl Liner 圆锥



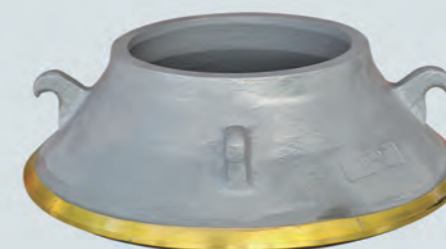
Bowl Liner 圆锥



Bowl Liner 圆锥



Bowl Liner 圆锥



Bowl Liner 圆锥

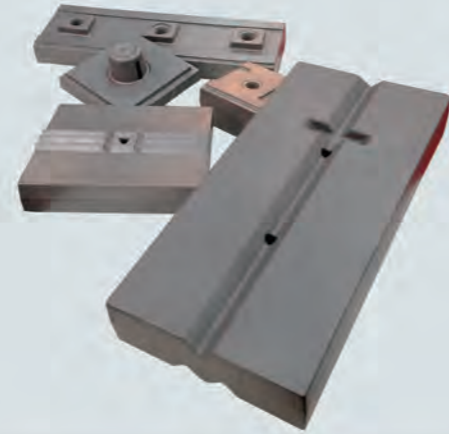


Bowl Liner 圆锥

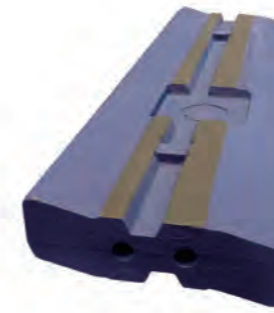
IMPACT CRUSHER SPARE PARTS

反击式破碎机配件

Impact crusher is important equipment in concrete production, road-building and construction waste recycle. The main spare parts are blow bar and liner plate. Our blow bars and impact plate employ the external refining technology effectively reduced the harmful elements, impurity, oxygen and hydrogen harm, greatly enhanced the abrasion resistance and impact toughness of the steel. Using proprietary metamorphic agent for modification treatment, fine grains, improve carbide configuration and distribution, and to improves the abrasion resistance and tenacity. After heat-treatment process, the hardness of Hongfei blow bar can reach to HRC58-63.



作为生产混凝土骨料，高速公路，铁路和城市建筑垃圾破碎的主要设备反击式破碎机，其主要耐磨配件为板锤和衬板。我司生产的高铬合金板锤和衬板已经应用在欧洲，南美，中东，非洲和北美等数十个国家和地区的数千台反击式破碎机上，并以其硬度高，耐磨损，韧性强的特点赢得了广大客户的信赖和赞誉。我司的板锤和衬板主要使用高铬合金铸造，是经过特殊处理炼制的，适用于各种解决方案，其经过淬火和回火热处理加工后具有最佳的微晶粒结构和足够的韧性，并且硬度可达HRC60以上。



Blow Bar 板锤



Blow Bar 板锤



Blow Bar 板锤



Blow Bar 板锤



Blow Bar 板锤



Blow Bar 板锤



Blow Bar 板锤



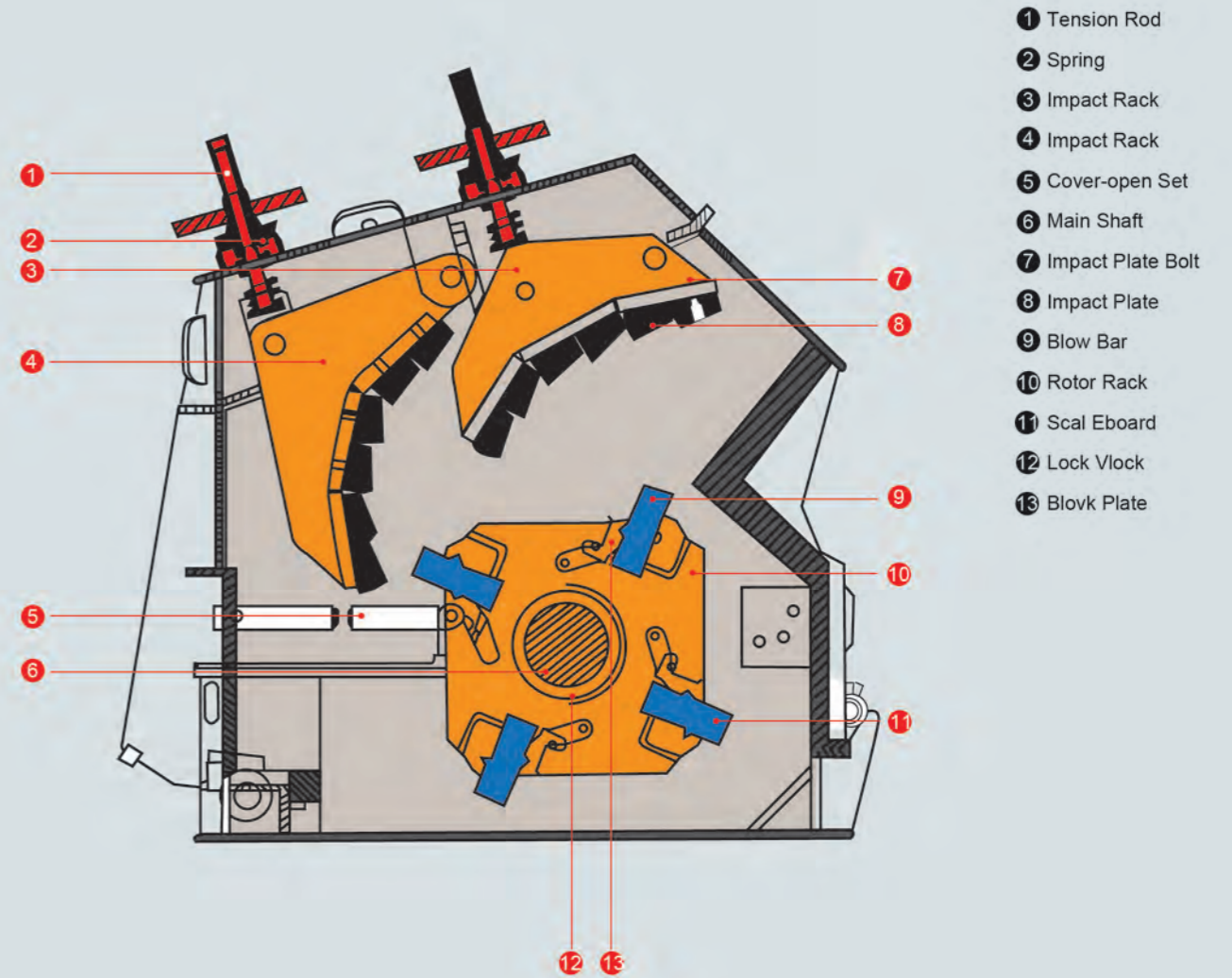
Blow Bar 板锤



Blow Bar 板锤



Blow Bar 板锤

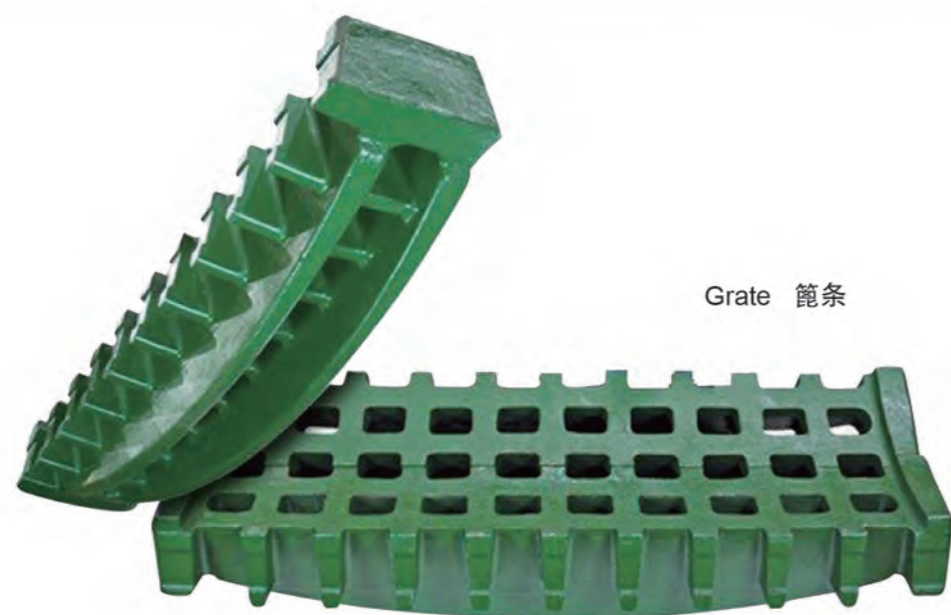


METAL SHREDDER SPARE PARTS

金属破碎机配件

Aiming to recycling of metal resources, Hongfei offer series parts for metal crushers, famous for it's stable wear-resistance and environmental protection. We also keep developing products in line with market demand and contribute to urban construction

以金属资源回收循环利用为目的。鸿飞公司的金属破碎机系列产品，以稳定、耐磨、环保出发，不断研究出新，开发更加符合市场需求的产品，为“城市矿山”添砖加瓦。



Grate 篦条



Hammer 锤头



Hammer 锤头



Hammer 锤头



Hammer 锤头



Hammer 锤头



Hammer 锤头



Hammer 锤头



Hammer 锤头

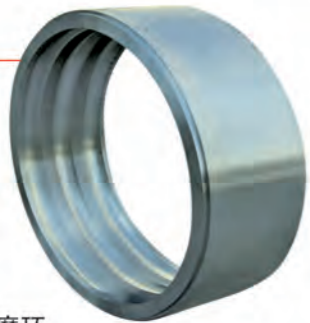
ENGINEERING MACHINERY AND OTHER 工程机械配件及其它

track shoes is one of the chassis parts of the construction machines, and is one of the wear parts of used in excavator, bulldozer, crawler crane, paver and other engineering machine .The high manganese steel track shoes manufacture by Hongfei company serves the large-scale machines of mines. The stability and wear resistance of the products, own good reputation at home and abroad.

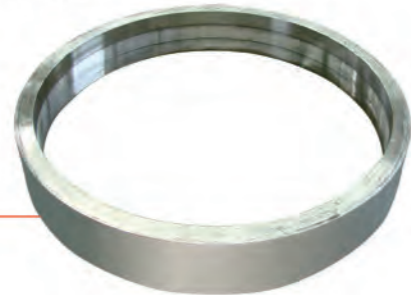
履带板，是工程机械的底盘件之一，是所使用的工程机械的一种易损件。常用在挖掘机、推土机、履带起重机、摊铺机等工程机械中。鸿飞公司开发的高锰钢履带板，服务于矿山大型机械，产品的稳定性、耐磨性，得到中外客户的一致认可。



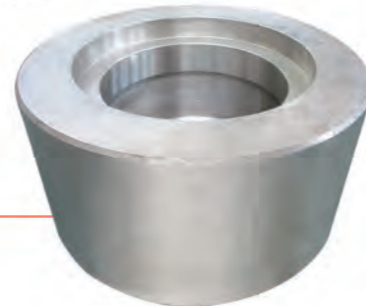
Rack Shoe 履带板



Mill ring 磨环



Roller 圆辊



GLOBAL VISION

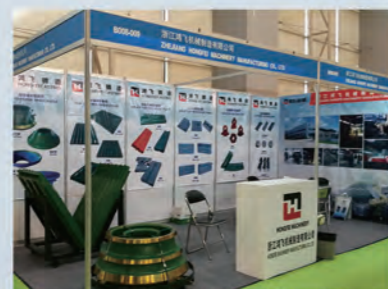
全球视野

The sales network spreads around the country as well 30 countries and regions in the world Mayang also has been making long-term trade cooperation With companies in USA, Chile,Ireland,Australia,UK, Japan, Italy,Canada,Germany etc.and products enjoy consistent prestige from global customers.

Hereby, is willing to make great efforts to provide global customers with more professional service for casting making so as to let customers fully satisfactory and build long-term partner relationship with them on basis fomutual benefit,our common ultimate goal is only one:everything Perfect.

销售网络遍布全国及世界三十个国家和地区，并与美国、智利、爱尔兰、澳大利亚、英国、日本、意大利、加拿大、德国等国家有长期的贸易往来，产品质量得到国内外客户的一致好评。

自此，鸿飞将尽一切努力，为全球客户提供更加专业的铸件制造服务，以确保客户的全面满意，并为之建立长期互惠的伙伴关系。我们共同的终极目标只有一个：事事零缺陷。



HONG FEI

MANGANESE STEEL CASTING SOLUTIONS EXPERT

鸿飞 - 锰钢铸件解决方案专家

WHERE IS ZHEJIANG HONGFEI MACHINERY MANUFACTURER LOCATED?

浙江鸿飞机械制造有限公司位于哪里？

Zhejiang Hongfei Machinery Manufacturing Co., Ltd. located in Lanxi City, Zhejiang Province. Our street address is Majian Industrial Park, Lanxi City, China. The zip code is 321100.

浙江鸿飞机械制造有限公司位于浙江省兰溪市，我们的地址是兰溪市马涧工业园区。邮编是321100。

WHAT DO YOU MANUFACTURE THERE?

浙江鸿飞机械制造有限公司生产什么？

Zhejiang Hongfei Machinery manufacture high manganese steel and high chrome parts for mining / construction/ metal disintegrator industry. These are replacement parts for high-wear applications. We are a integrated manufacturer with good quality products.

江鸿飞机械制造有限公司致力于生产高锰钢和高铬铸件，用于矿山/建筑/金属粉碎等行业。这些铸件都是高耐磨应用行业的替换零件。我们是一家生产高质量产品的综合性厂家。

HOW LARGE IS YOUR FACILITY?

HOW MANY PEOPLE DO YOU EMPLOY?

浙江鸿飞机械制造有限公司有多大规模？
有多少员工？

Zhejiang Hongfei Machinery covers an area of 50,000 square meters. We have our own fabrication workshop and foundry . Ready-to-use warehouse and customizable patterns for castings. Company gathering 300 outstanding talents .

浙江鸿飞机械有限公司占地面积5万平方米。我们自己的生产车间和铸造车间。有用于存储成品配件的仓库和客制化铸件模具。公司聚集了300名优秀人才。

HOW OLD IS THE COMPANY?

浙江鸿飞机械制造有限公司的资历？

Hongfei was founded in 2,000 years in Zhejiang Yongkang. At the turn of the century, machines and spare parts for industrial use were brought in, which were inspired a group of workers to form Zhejiang Hongfei Machinery Manufacture company. The company has almost twenty years of experience in this field.

鸿飞于2000年在浙江永康成立。在世纪之交，工业用的机械和零配件引进。这些前景激励了一批有志青年汇聚到浙江宏飞机械制造工程有限公司，公司至今在行业里已有近20年的制造经验。



www.zjfei.com



鸿飞机械
HONGFEI MACHINERY

PROFESSIONAL MANUFACTURERS
OF WEAR-RESISTANT ALLOY CASTINGS

HONGFEI MACHINERY
MANUFACTURING CO.,LTD



浙江鸿飞机械制造有限公司

HONGFEI MACHINERY MANUFACTURING CO.,LTD

地址：浙江省兰溪市马涧工业园区
Add: Majian Industrial Park, Lanxi City, Zhejaing, China
Tel: +86-579-88490528
E-mail: sales@zjfei.com
http://www.zjfei.com