

PEARPOINT®

# flexiprobe™ P540c

Portable video inspection system.

Comprehensive. Convenient. Connected.



SPX®

# Pearpoint's flexiprobe P540c<sup>®</sup>

## Welcome to a Connected World

The flexiprobe P540c system simplifies your operations by automatically creating a survey report, allowing you to concentrate on your inspection tasks.

Share your reports quickly and easily via email or the Dropbox file sharing service.\*

### flexiprobe P540c systems – easy to use, efficient to own

- Powerful controller provides a comprehensive and intuitive user interface, simple menus and dedicated function buttons.
- Incorporates reporting templates to comply with multiple standards to meet most needs:
  - Share MSCC3, 4 and 5-compliant reports as soon as you have completed your survey.
  - WinCan compatible option† – can be purchased with flexiprobe P540c, or later.
- Built-in rechargeable batteries provide up to 7.5 hours usage. Charge on the move for longer use time.
- Ruggedized case and IP55 rating provide reliability and usability most challenging environments.

\*WiFi access point required, such as mobile phone, tablet or dongle.

†May require a separate licence from WinCan.



**Reliability where you need it**



## Connectivity aiding productivity

# Simpler, Faster, Smarter

The flexiprobe P540c system is managed by the most powerful and intuitive Controller ever designed by Pearpoint. A quick boot-up, an intuitive user interface and a high definition 10.1" TFT display, the P540c lets you concentrate on the job in hand.

## Time on site is time well spent

The P540c Controller features a high capacity internal Lithium-Ion battery, providing power for up to a full day's typical usage. Also on board is 128Gb of no-moving-parts memory, sufficient for over 90 hours of video recording.

## Reports

An MSCC-compliant report will be ready to share as soon as your survey is completed, using the condition codes of your chosen standard. Or, for those surveys that don't require an MSCC-compliant report, flexiprobe P540c can do that for you too.

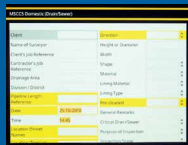
On-board WiFi connectivity allows you to use your communications device or dongle as a hotspot, letting you share your survey with your customer, manager or accounts department, creating productive time for you.

## Video streaming

Share the flexiprobe P540c display with a compatible device such as your customer's phone or your colleague's tablet.<sup>3</sup>

- Create reports:

- Basic<sup>1</sup>
- MSCCx<sup>2</sup>
- WinCan<sup>3</sup>



- Wi-Fi connection



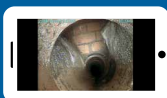
- USB



- Email directly to client/manager or share to DropBox using wireless hotspot connection to phone



- Stream video to local device<sup>3</sup>



**Notes:**

- 1 Basic. Reports include your observations and remarks
- 2 MSCCx. Reports created using condition codes from WRc MSCC version 3, 4 or 5
- 3 Contact Pearpoint for details and availability



# Fast, intuitive inspection



## Spend your time surveying, not computing

- Short boot-up time to get you inspecting, not waiting
- Menus in multiple languages
- Context-sensitive buttons on both sides of the display guide you through your survey – no complex menus to remember
- Dedicated buttons for frequently-used tasks, including “Record”, “Make an Observation” and “Count reset”
- Full QWERTY keyboard with IP55 ingress protection (regional layouts also available)

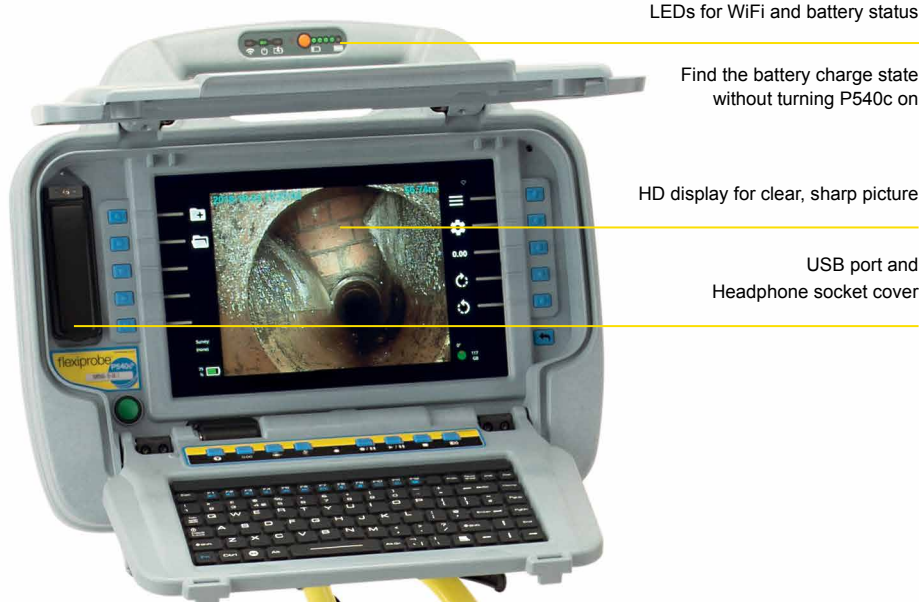
## Reporting

### Multiple standards: meeting both your and your customers' requirements

- flexiprobe P540c offers a suite of customisable report options, and the WRc's MSCC3, 4 and 5 condition codes.
- Reports are exported as docx documents, which allow editing and customisation on a PC, and xml files are also available for MSCC5-compliant reports.
- Optional WinCan export license available, can be upgraded in the field\*.
- Report templates and condition classification codes can be modified to create reports adhering to your own standards.
- On-board connectivity capabilities allow reports to be created and shared within seconds of completing your video inspection survey. Exporting to a USB stick, in any of the 3 available ports, is also available.

\*Contact Pearpoint for details and availability





LEDs for WiFi and battery status

Find the battery charge state without turning P540c on

HD display for clear, sharp picture

USB port and Headphone socket cover



Connectivity: USB, HDMI, WiFi, Analog video out, Audio in and out

Convenient cable-tidy hooks

IP55, open and closed



IP68 stainless steel cameras with ultra-bright white LEDs



Ultra-flexible Plumbers rod



Each flexiprobe P540c system comes complete with a universal easy-fit brush skid set, that allows the 1" (25mm) camera to be used in pipes up to 4" (100mm) diameter and the 2" (50mm) camera in pipes up to 6" (150mm) diameter. Brushes can be conveniently replaced in seconds. Additional standard equipment may vary due to regional variations.



Compact self-levelling camera option

## Options



### A range of rods to suit your application

From 100' (30m) for residential and small commercial plumbing use, right up to 500' (150m) for specialist applications.



### Ultra-tough high resolution cameras

Stainless steel construction in a compact design. 3 choices: 1" (25mm) for small pipes, and self-levelling 1 1/4" and 2" (32mm and 50mm) for larger diameter applications. High resolution sensors and ultra bright white LEDs ensure a clear picture, even when submerged in water up to 330' (100m) deep.

Inspect pipes from 4"/100mm to 12"/300mm



P343 Reel

P342  
400'/120m Reel

P342  
200'/60m Reel

P341 Reel

P341  
Plumbers  
Reel



### Sonde and locator combination

Combine your P540c flexiprobe system with a suitable locator to pinpoint your camera's location and depth, providing a valuable tool for repairs and tracing alike. The RD5100S locator is capable of detecting 3 different sonde frequencies and is specifically designed for the water industry, and is capable of precisely locating a sonde even in electrically noisy areas.



### P350 flexitrac™ compatible

The P350 flexitrac controller is compatible with the full range of P340/P540c flexiprobe cameras, reels, sondes and accessories providing unmatched modularity from the small 100' (30m) Plumbers system to the 1000' (305m) motorized P356 steerable crawler system.



## Summary specifications

<b>P540c Controller</b>		
Power supply	Mains Input	100-240VAC, 50-60Hz, 1.7A
	DC Output	16V, 3.75A, 60W
Input power requirements		10-30V, 60W
Battery capacity	Internal Li-Ion Battery (4S2P)	14.68V, 6.4Ah (93.95Wh)
Battery run-time	Up to 1 day's typical usage, 7.5hrs view only/5hrs continuous recording*	
Battery level indication	5 LEDs in handle (user activated) and on-screen symbol	
Charging Status	2 LEDs	
WiFi Status	1 LED and on-screen symbol	
Display	10.1", 1280x800 transmissive HD color TFT	
Storage	Integral 128Gb and support of USB flash storage	
Recording formats	Video: H.264. Audio: MP3. File format: MP4	
Connectivity	USB 2.0 (x3), HDMI video out, Analog video out (PAL/NTSC), Headphones out, Microphone in, Rod/Camera connectivity and 802.11 b/g/n WiFi	
Environmental Protection	P540c controller	IP55
	Power supply/charger	IP54 rated for indoor use
Temperature	Storage	-4°F to 176°F/-20°C to +80°C
	Operating	14°F to 122°F/-10°C to +50°C
	Charging	32°F to 104°F/0°C to +40°C
Fuse rating	5A	
Dimensions	17.5 x 15.2 x 6.1"/445 x 385 x 155mm	
Weight	16lb/7.25kg	
Construction	High impact ABS and powder-coated, zinc-plated mild steel	

\*May vary depending on power management settings chosen, ambient conditions, accessories attached, recording time and other factors

### flexiprobe P540c systems include as standard:

- flexiprobe P540c controller
- Choice of NTSC/PAL color camera and 512/640Hz flexisonde:
  - 1" (25mm) camera, skid ball, universal brush and skid kit and sonde.
  - 1¼" (32mm) self-levelling camera and skid
  - 2" (50mm) self-levelling camera, skid ball, universal brush and skid kit and 1.4" (35mm) sonde.
- Choice of pushrod reels:
  - 100' (30m) or 200' (60m) P341 Plumbers reel.
  - 115' (35m) P341 reel.
  - 200' (60m) or 400' (120m) P342 reels.
  - 500' (150m) P343 reel.
- Controller swivel mount (Optional for the P341 plumbers reel).
- Mains power supply/charger, IP55 keyboard and Pearpoint tool bag.

<b>Rods and Reels</b>	<b>P341 Plumbers</b>	<b>P341 Mini</b>	<b>P342 Reels</b>	<b>P343 Reel</b>
Dimensions	22.4" x 16.9" x 10.6" 570 x 430 x 269mm	22.4" x 16.9" x 10.6" 570 x 430 x 269mm	33.5" x 29.5" x 16.5" 850 x 750 x 420mm	32.0" x 46.0" x 18.7" 813 x 1168 x 475mm
Weight	21lbs / 9.4 kg 25lbs / 11.2kg	24lbs/11kg	40lbs/ 18.2 kg 55lbs/25kg	81.6lbs/37kg
Construction	Powder-coated tubular steel frame			
Rod	100'/30m 200'/60m	115'/35m	200'/60m 400'/120m	500'/150m

<b>Cameras</b>	<b>1"/25mm camera</b>	<b>1 ¼"/32mm self-levelling camera</b>	<b>2"/50mm self-levelling camera</b>
Dimensions	1" x 1.52"/25.4 x 38.7mm	1.23" x 2.6"/31.24 x 66mm	1.89" x 2.87"/48 x 72.8mm
Weight	0.1lbs/0.06kg	0.4lbs/0.18kg	0.8lbs/0.36kg
Construction	Stainless steel/ polycarbonate	Stainless steel/sapphire glass/polycarbonate	
Power	1.8W	1.3W	3.8W
Environmental	IP68 to 330' (100m)/11bar	IP68 to 230' (70m)/7bar	IP68 to 330' (100m)/11bar
Temperature	Storage: -4°F to 176°F/-20°C to +80°C Operating: 14°F to 122°F/-10°C to +50°C		
Focus	Manually adjustable	Fixed	Manually adjustable
Focal range	10mm to ∞	Fixed	10mm to ∞
Lighting	Ultra bright white LEDs		
LED luminance	≥ 75lm	≥ 150lm	≥ 208lm
Active pixels (HxV)	656 x 492 NTSC 768 x 576 PAL	640 x 480 NTSC 640 x 576 PAL	768 x 492 NTSC 765 x 582 PAL
Horizontal resolution	≥ 460TVL	≥ 420TVL	≥ 460TVL



Visit [www.pearpoint.com](http://www.pearpoint.com)

## Global locations

### Radiodetection (USA)

28 Tower Road, Raymond, Maine 04071, USA

Toll Free: +1 (877) 247 3797 Tel: +1 (207) 655 8525 [rd.sales.us@spx.com](mailto:rd.sales.us@spx.com)

### Pearpoint (USA)

39-740 Garand Lane, Unit B, Palm Desert, CA 92211, USA

Toll Free: +1 800 688 8094 Tel: +1 760 343 7350 [pearpoint.sales.us@spx.com](mailto:pearpoint.sales.us@spx.com)

### Radiodetection (Canada)

344 Edgeley Boulevard, Unit 34, Concord, Ontario L4K 4B7, Canada

Toll Free: +1 (800) 665 7953 Tel: +1 (905) 660 9995 [rd.sales.ca@spx.com](mailto:rd.sales.ca@spx.com)

### Radiodetection Ltd. (UK)

Western Drive, Bristol, BS14 0AF, UK

Tel: +44 (0) 117 976 7776 [rd.sales.uk@spx.com](mailto:rd.sales.uk@spx.com)

### Radiodetection (France)

13 Grande Rue, 76220, Neuf Marché, France

Tel: +33 (0) 2 32 89 93 60 [rd.sales.fr@spx.com](mailto:rd.sales.fr@spx.com)

### Radiodetection (Benelux)

Industriestraat 11, 7041 GD 's-Heerenberg, Netherlands

Tel: +31 (0) 314 66 47 00 [rd.sales.nl@spx.com](mailto:rd.sales.nl@spx.com)

### Radiodetection (Germany)

Groendahlscher Weg 118, 46446 Emmerich am Rhein, Germany

Tel: +49 (0) 28 51 92 37 20 [rd.sales.de@spx.com](mailto:rd.sales.de@spx.com)

### Radiodetection (Asia-Pacific)

Room 708, CC Wu Building, 302-308 Hennessy Road, Wan Chai, Hong Kong SAR, China

Tel: +852 2110 8160 [rd.sales.asiapacific@spx.com](mailto:rd.sales.asiapacific@spx.com)

### Radiodetection (China)

Ming Hao Building D304, No. 13 Fuqian Avenue, Tianzhu Town, Shunyi District, Beijing 101312, China

Tel: +86 (0) 10 8416-3372 [rd.service.cn@spx.com](mailto:rd.service.cn@spx.com)

### Radiodetection (Australia)

Unit H1, 101 Rookwood Road, Yagoona NSW 2199, Australia

Tel: +61 (0) 2 9707 3222 [rd.sales.au@spx.com](mailto:rd.sales.au@spx.com)

Radiodetection is a leading global developer and supplier of test equipment used by utility companies to help install, protect and maintain their infrastructure networks.

© 2018 Radiodetection Ltd. All rights reserved. Radiodetection is a subsidiary of SPX Corporation. Radiodetection, Pearpoint, flexitrac, flexiprobe and RD5100S are trademarks of Radiodetection Ltd. WRc, WinCan, HDMI and DropBox are registered trademarks of their respective owners. Due to a policy of continued development, we reserve the right to alter or amend any published specification without notice. This document may not be copied, reproduced, transmitted, modified or used, in whole or in part, without the prior written consent of Radiodetection Ltd.