

## CONCRETE PLACEMENT HOSE 800PSI

**Construction:**

Tube: Black NR/SBR rubber compound  
 Reinforcement: Multi ply synthetic fabric or steel wire braiding  
 Cover: Black, smooth cloth impression, NR/SBR rubber compound

**Application:**

These concrete hoses are high pressure pumping components designed to pump concrete and other abrasive mixtures such as plaster and wet cement at a pressure up to 800psi

**Characteristic:**

- High abrasion resistant tube
- Abrasion loss value: DIN53516 70±5mm3
- Weather and ozone resistant cover

**Temperature:** -40°C to +70°C (-40 °F to +158 °F)



Item code	I.D		O.D		W.P		L	
	mm	inch	mm	psi	bar	ft	m	
CPH5551	51	2	74	800	55	200	61	
CPH5576	76	3	100	800	55	200	61	
CPH55102	102	4	132	800	55	200	61	

## CONCRETE PLACEMENT HOSE 85BAR/1230PSI

**Construction:**

Tube: Black, smooth, Abrasion resistant NR/SBR compound  
 Reinforcement: 2"-3" : two steel wire braiding,  
 3 1/2"-6" four layers steel cords  
 Cover: Black, smooth cloth impression, NR/SBR compound abrasion cover, resistant to abrasion, cutting, gouging and weather.

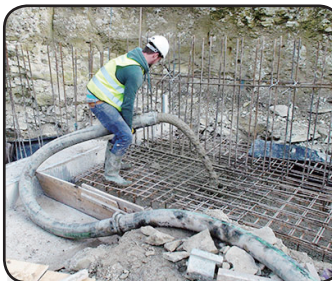
**Application:**

High pressure concrete placement application.

**Characteristic:**

- High abrasion resistant tube
- Abrasion loss value: DIN53516 70±5mm3
- Weather and ozone resistant cover
- Designed for high kink resistance and perfect flow

**Temperature:** -40°C to +70°C (-40 °F to +158 °F)



Item Code	I.D		O.D		W.P		B.P		R		kg	
	inch	mm	inch	mm	psi	MPa	psi	MPa	inch	mm	kg/m	lb/ft
CPH8551	2	50.8	2.75	69.8	1230	8.5	3000	20	10.83	275	3.03	2.04
CPH8564	2 1/2	63.5	3.46	88	1230	8.5	3000	20	11.81	300	4.48	3.01
CPH8576	3	76.2	3.81	96.7	1230	8.5	3000	20	13.78	350	5.46	3.67
CPH85102	4	101.6	5.12	130	1230	8.5	3000	20	15.75	400	8.46	5.69
CPH85127	5	127	6.1	155	1230	8.5	3000	20	19.69	500	9.63	6.47
CPH85152	6	152.4	7.09	180	1230	8.5	3000	20	25.59	600	10.99	7.39