

### 4WNA Series Winches Truck Mountable

- **Motor** : 1 hp, SCR type
- **Controller** : SCR / 10A current limit
- **Speed** : 0 to 30 M/min
- **Maximum Load** : 300 kg

#### Capacity

- 1800M 4.76mm wireline
- 1000M 6.53mm wireline (video)

#### Shipping Weight

- 320 Kg

#### Dimensions on shipping pallet

- 120 x 74 x 59 cm

#### Features

- Depth-Speed-Tension Display
- Tension Alarm cut-off
- Remote Control
- High capacity small footprint design
- Truck or skid mounting template

### MX Series Portable and Semi-Portable winches

- **Motor** : 1/4 hp, SCR type
- **Controller** : 4 quadrant, 10A current limit
- **Speed** : 0 to 24 M/min
- **Maximum Load** : 46 kg

#### Capacity

- **4MXA-1000**, 500M 3.17mm dia.
- **4MXB-1000**, 480M 4.76mm dia.
- **4MXC-1000**, 1000M 3.17mm dia.

#### Shipping Weight

- **4MXA-1000** : 60 Kg
- **4MXB-1000** : 85 Kg
- **4MXC-1000** : 89 Kg

#### Dimensions on shipping pallet

- **4MXA-1000** : 66 x 45.7 x 45.7 cm
- **4MXB, C-1000** : 66 x 66 x 66 cm

### 4200/4305 Mini-winches

- **Motor** : 1/20 hp, SCR type
- **Controller** : 4 quadrant, 10A current limit
- **Speed** : 0 to 8 M/min
- **Maximum Load** : 23 kg

#### Capacity

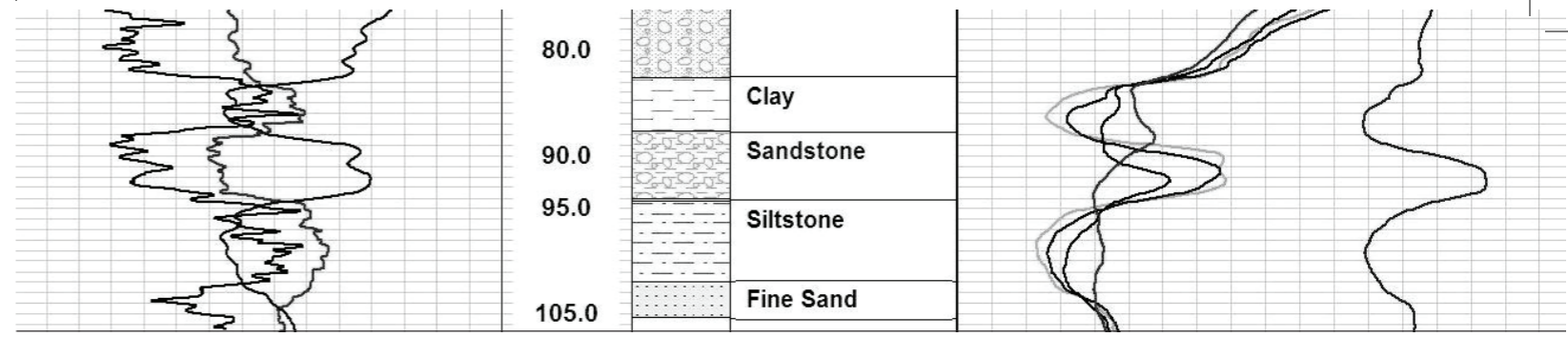
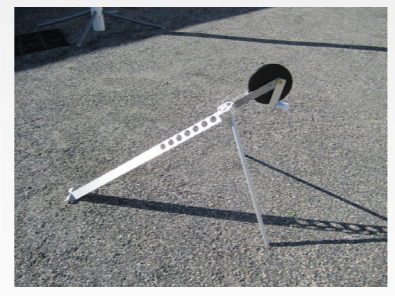
- 305M 2.54mm dia.
- 200M 3.17mm dia.

#### Shipping Weight

- 38 Kg

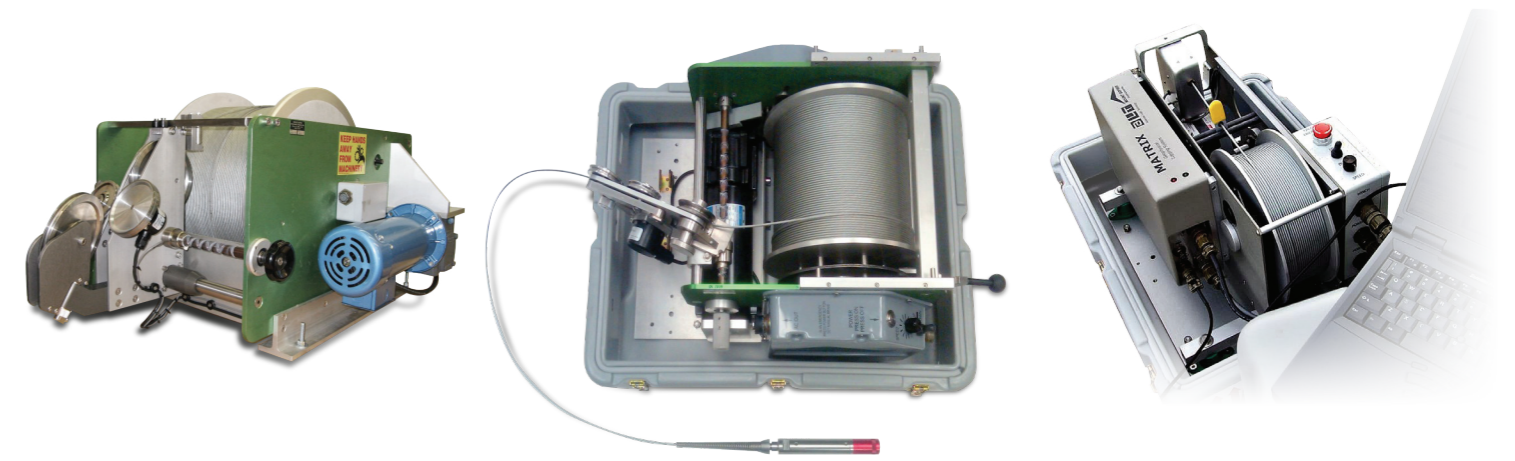
#### Dimensions in Ship case

- 66 x 45.7 x 45.7 cm



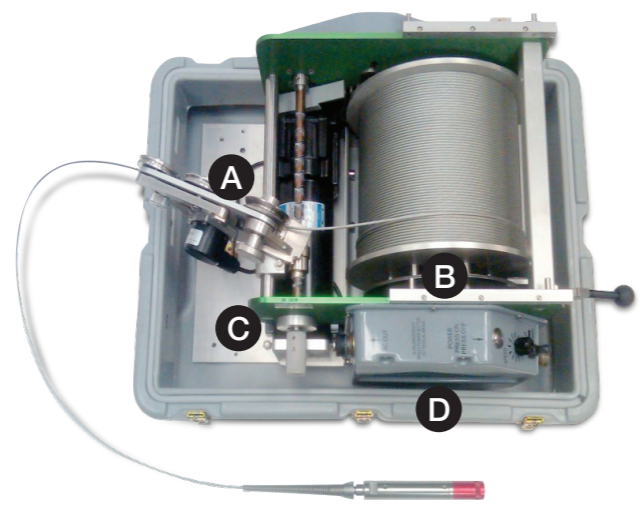
# Mount Sopris Instruments

## Geophysical Logging Winches



MX Winches available with many types of geophysical wirelines, from 3.17mm 1-conductor cable to 4.76mm 4-conductor or video cables.

- A** : Automatic cable level-wind system.
- B** : Adjustable disc brake
- C** : Precise, calibrated depth measuring system
- D** : Heavy-duty shipping case



Mount Sopris Instrument Co. Inc. | 4975 E. 41 st Ave. Denver | CO 80216 | USA | Ph. 303 279 3211 | www.mountsopris.com

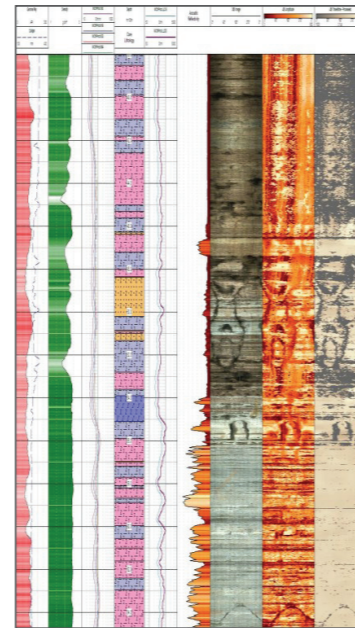


Zoning de Solupla Bât A | route de Niederpallen | L-8506 Redange | Luxembourg | Tel. +352 23 649 289 | www.alt.lu  
36th Floor, Menara Maxis | Kuala Lumpur City Centre | 50088 Kuala Lumpur | Malaysia | Tel. +60 3 2615 7261 | www.alt.lu



# 4WNA, 1000 Truck-Mount Winch

The Mount Sopris 4WNA-1000 truck or skid mount winch assembly and included 3WCA-1000 Depth-Speed-Tension display is versatile, handling many types of wirelines. The system has been used in shallow oil & gas applications, borehole gravity surveys, slimline NMR work, digital video, memory & wireline gyro, and other typical geophysical logging projects in the natural resource and ground water communities.

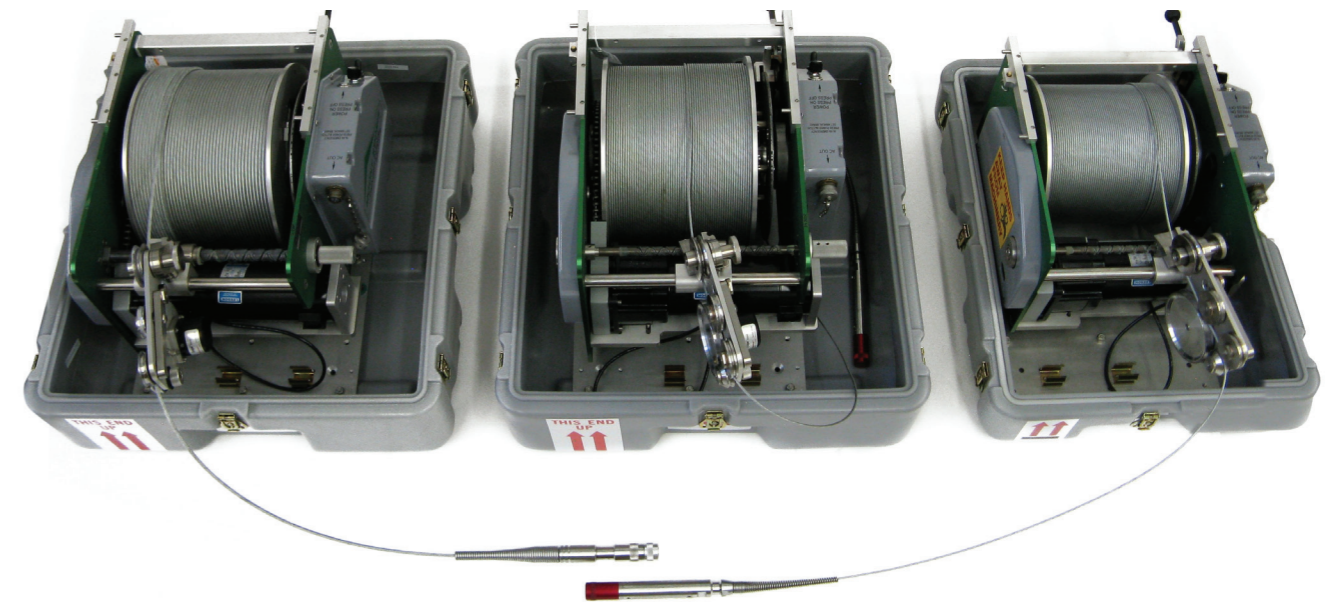


# MX Series Semi-Portables

**4MXB**  
with 480M 4.76mm cable

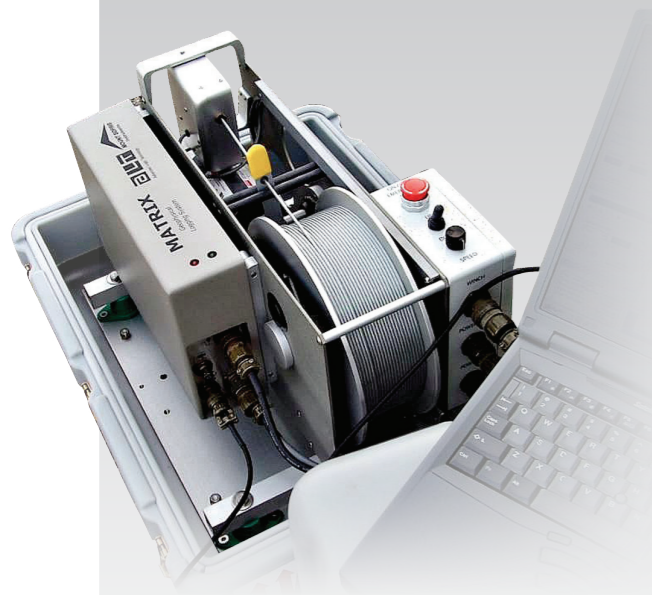
**4MXC**  
with 1000M 3.17mm cable

**4MXA**  
with 500M 3.17mm cable



MSI Single Conductor or GO 4-Conductor Cableheads available

*“Mount Sopris mini-winchers are light-weight and easy to transport”*



- Mount Sopris mini-winchers are light-weight and easy to transport to remote areas.
- Good choice for shallow borehole rentals.
- 200 or 300 meter units available.
- Heavy-duty shipping case can be used as logging platform. Will operate with sine-wave inverter & 12 VDC battery.
- Quick-disconnect Matrix can be used with any winch.

*“Flexible design for multiple applications”*

- High Resolution Depth Encoder.
- Automatic Level Wind System.
- Adjustable disc Brake.
- Emergency Stop Function.
- Heavy-Duty Shipping case.
- Rugged and Portable.
- Easy Operation.
- Flexible design for multiple applications including video and custom probes.
- Accommodates many wireline types.
- User-friendly tripod and accessories, including cable re-heading kit.

**4MXA-1000 500M**  
with Matrix Console

