

# PRO4-B

## Advanced Equipment Simulator – Optimized for Surface Mining

Given a complete Vision System overhaul, the PRO4-B delivers the most immersive experience available in surface mining simulation. With almost double the screen resolution of its predecessor and extra screen height, this platform delivers a clear and uninterrupted 180-degree training environment, ensuring trainees remain engaged and focused for maximum learning retention.



## CLASSROOM

### 1 CURVED, SEAMLESS 180° VISUAL EXPERIENCE

Seamless full HD 180° frontal projection system provides uninterrupted views, high and realistic clarity resolution to maximize learning retention.

### 2 REALVIEW™ EXPERIENCE

Provides a dynamic view of the training environment and improved depth perception.

### 3 CONVERSION KIT® COMPATIBLE\*

The PRO4-B is compatible with all Immersive Technologies' interchangeable Conversion Kits for surface mining equipment.

### 4 TRAINER DECK

Safe standing area immediately next to the motion platform, allowing a trainer to provide necessary training direction and feedback.

### 5 MOTION PLATFORM

Low profile, accurate and safest available motion platform - optimized for mining and designed for easy Conversion Kit changeover.

### 6 ENHANCED TRAINER STATION / REMOTE TRAINER STATION\*

Dual-monitor interface allows effective monitoring, reporting and control of simulation training sessions. Alternatively, a Remote Trainer Station can be located and connected in a separate office.

### 7 INTEGRATED REAR SCREEN

Rear doors can be closed to provide a screen for machines requiring a rear view. e.g. dozer ripping training.



\* Conversion Kit and Remote Trainer Station sold separately. Trainer station chair not included.



Haul Trucks



Excavators



Shovels



Rope Shovels



Track Dozers



Wheel Loaders



## Broadest OEM Range

Supported by leading Original Equipment Manufacturers which have thoroughly evaluated simulator suppliers and chosen to align with Immersive due to the company's global industry acceptance, technological leadership and proven customer success. We have developed solutions for: CATERPILLAR, HITACHI, KOMATSU, LIEBHERR, SANDVIK, EPIROC (ATLAS COPCO), VOLVO and many more.



## Largest Simulator Deployment

Immersive Technologies have the largest deployment of simulation based training solutions in mining operations, contractors, dealers and training schools around the world with more than 1170+ simulator modules deployed in 45+ countries. 320+ Global mining customers have achieved operational improvement via the adoption of our solutions.

TRANSPORTABLE



**8 RELIABLE AND ROBUST**

Key electronic components are housed separately to the training area to minimize ambient noise and dust ingress.

**9 OCCUPANT COMFORT SYSTEM**

Air vents direct air flow directly onto the operator for comfort and to maintain alertness. In the transportable, two air conditioning systems ensure both the equipment room and the training area can be maintained at optimum temperatures.

**10 SWING-IN REAR SCREEN**

Designed for machines requiring a rear view display; ideal for dozer ripping training.

**INTERCHANGEABLE MACHINE GROUPS SUPPORTED**



Graders



Draglines



Surface Drills



Light Trucks



Light Vehicles



Underground Trucks



**Complete Solution Compatibility**

Immersive Technologies' simulators are supported by the industry's most comprehensive range of compatible tools, technologies and professional services. This ensures a solution to meet or exceed your needs can be defined, delivered, implemented and generating operational results within a set time frame.



**SimControl Software**

SimControl is the software at the heart of our simulators. It delivers highly accurate simulation, advanced training capability and configuration functionality proven to significantly change operator behavior in the field. Get the most out of your simulator purchase with the latest version of SimControl.

# Proven Customer Results

Immersive Technologies is the only equipment simulator supplier with a consistent and proven track record of delivering significant and measurable cost reductions, productivity gains and safety improvements.



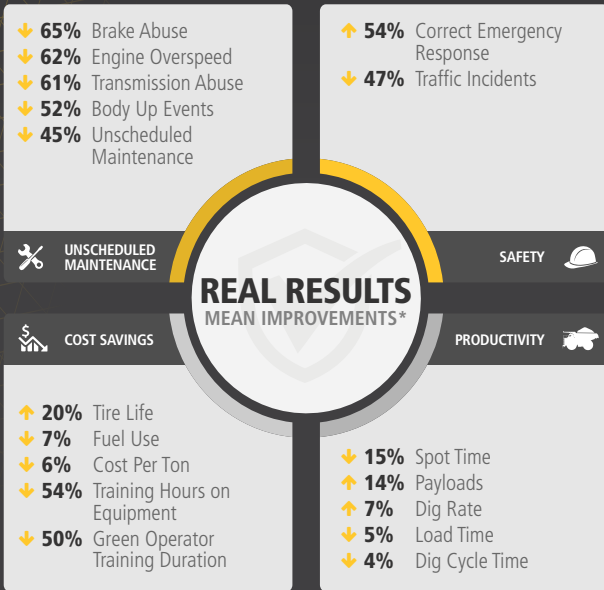
PEOPLE



PROCESS



TECHNOLOGY

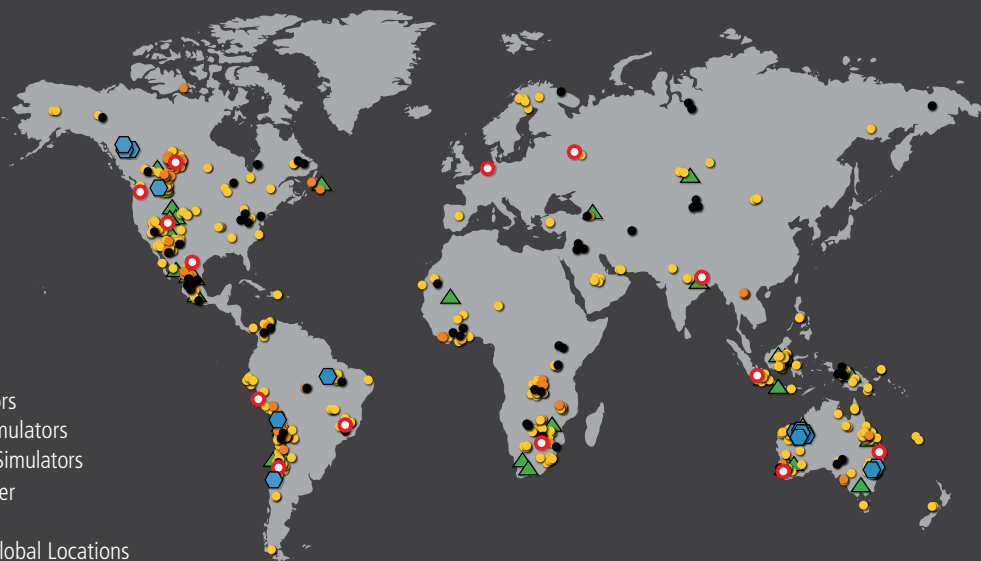


\* All results are average in-field improvements, documented and verified by external parties.

# Reliability & Technical Support

We provide unmatched support by:

- Locating specialists in or close to major mining hubs
- Offering a full range of technical support options both on and off site
- Our trained specialists keep your program up and running 24/7/365
- Delivering scheduled system upgrades and extended parts warranty
- Implementing site data analysis and training needs analysis
- Administering emergency on-site service



- Deployed Surface Simulators
- Deployed Underground Simulators
- Deployed Medium Fidelity Simulators
- ▲ Managed Services Customer
- Autonomous Haulage Site
- Immersive Technologies' Global Locations



[www.ImmersiveTechnologies.com](http://www.ImmersiveTechnologies.com)

© Immersive Technologies  
20200723

EXPECT RESULTS