



DISCOVER THE POWER OF CONTRACTOR DATA MANAGEMENT





TAKE CONTRACTOR DATA MANAGEMENT TO THE NEXT LEVEL

Today's manufacturing and industrial sites often approach contractor data management by trapping valuable spend data inside a web of data silos and manual systems.

On a typical industrial site, contractor labor, equipment, and material costs are estimated, decisions are made in the dark, and crucial data is spread across multiple systems. Sound familiar? With myTrack, you can measure, track, and make informed decisions about your routine maintenance, shutdowns, turnarounds, outages, and capital projects in one place.

With real-time insight into your relationship with contractors, you become more contract-compliant, ensuring hours and dollars are calculated and allowed in real-time, then updated to your enterprise resource planning (ERP) system. Contractors get paid accurately and on time, with labor and hours validated through access control and gated systems.

Get ready to streamline back-office processes and support greater overall productivity, jobsite safety, spend visibility, and build stronger contractor relationships.



BENEFITS

- **ALWAYS KNOW WHO IS ONSITE**

In today's fast-paced business environment, having real-time visibility into your contractor workforce is crucial. myTrack allows companies to monitor contractor activities, track progress, and make informed decisions.

- **ELIMINATE OVERBILLING AND MITIGATE RISK**

myTrack automatically enforces contract terms and conditions, enabling companies to eliminate risk and non-compliant charges before payment is made.

- **PAY CONTRACTORS WITH CONFIDENCE**

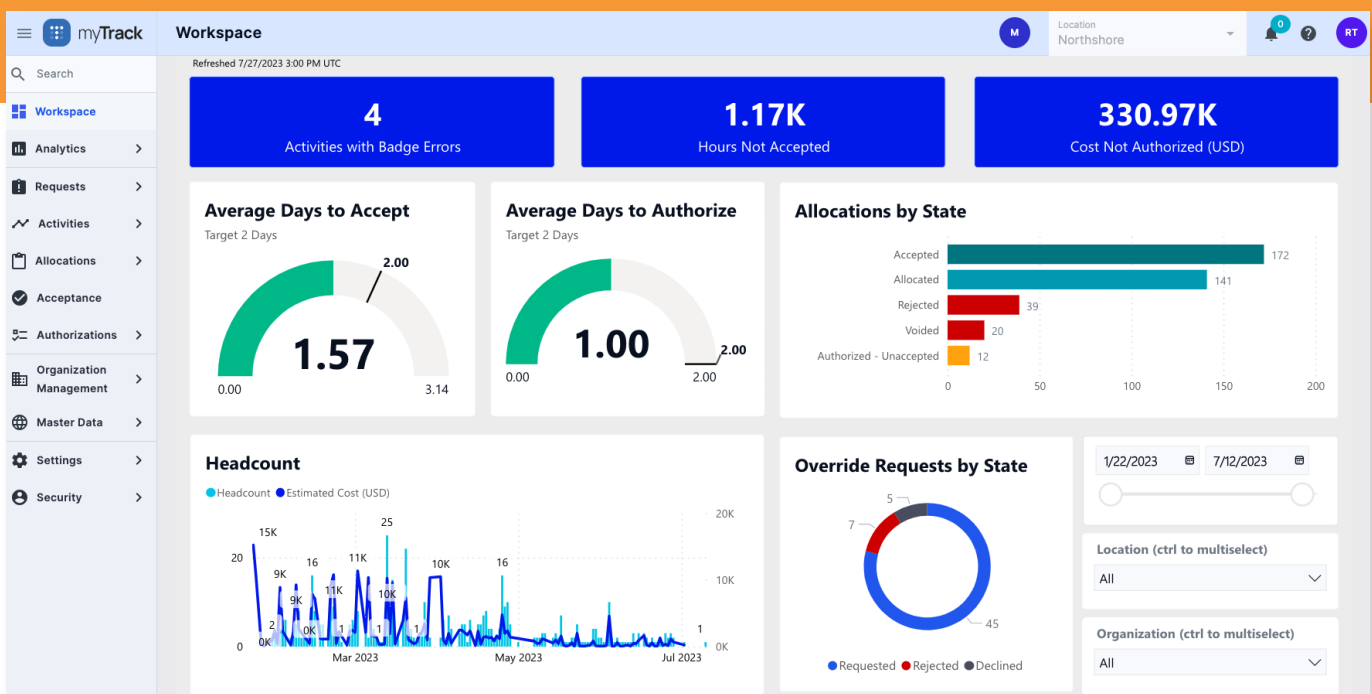
Take the guesswork out of project spend with an automated process to control, manage, and reduce contractor labor, equipment, and material spend.

- **MANAGE YOUR GLOBAL WORKFORCE**

As companies operate globally, managing a diverse and dispersed contractor workforce can be challenging. myTrack's centralized platform allows for seamless coordination, standardization, and management across different locations.

- **MAKE DATA-DRIVEN DECISIONS**

Data is the new gold. myTrack's real-time data insights enable companies to make informed decisions based on accurate information, leading to better decisions about future projects, budget allocations, contracting strategies, and contractor performance evaluations.



Why myTrack?



Personalized User Experience | myTrack's modern look and feel means a more efficient, improved overall user experience -- plus a faster daily settlement process with reduced clicks and quick access to data.



Mobile Authorization | Improve productivity by authorizing hours and costs wherever you are with the myTrack mobile app. No more going back to the work trailer -- spend more time in the field overseeing work.



Built-in Intelligence | Leverage myTrack's intelligence for accelerated transactions, precise spend validation, visual alerts for data exceptions, and real-time notifications. Elevate your accuracy and efficiency in managing contractor data.



Open API | Cross-application spend controls are enabled through myTrack's open architecture.



Reduce Administrative Time | Have one simplified workstream and a personalized experience. Get real-time alerts through in-app notifications and texts. Plus, it is easier to accelerate contractor onboarding onto myTrack.



Robust Architecture | Propel your business forward with software built on the cutting edge of technology. Our commitment to innovation means myTrack's architecture is designed to grow with your business and emerging technologies such as AI, machine learning, and more.

DRIVER 4 | MARK JAMES

STATUS ON-SITE

Onsite - 10 Days

Equipment Rate: Monthly
Monthly Rate: \$20,000

05:35:06 TIME LEFT

EXCAVATOR 3

DRIVER 2 | STEVE LOUIS

STATUS ON-SITE

Onsite - 3 Days

Rental Equipment Rate: Daily
Daily Rental Rate: \$1,500

03:48:56 TIME LEFT

EXCAVATOR 6

CONTRACTOR DATA MANAGEMENT

Global Fortune 5 Refinery Case Study

\$2.1M
6 WEEKS SAVINGS DURING
A TURNAROUND

INVOICED HOURS COMPARISON

Vendor Invoices	Contractor 1	Contractor 2	Contractor 3	TOTAL
ST Hours	49,628.50	62,277.50	42,624.75	154,530.75
OT Hours	22,835.00	23,759.50	13,814.00	60,408.50
DT Hours	6,311.00	8,761.00	3,153.25	18,255.25
Total Hours	78,744.50	94,798.00	59,592.00	233,164.50
Total Dollars	\$6,479,378.15	\$7,565,926.37	\$4,144,838.00	\$18,190,142.81

TRACK CALCULATED HOURS

Track Calculations	Contractor 1	Contractor 2	Contractor 3	TOTAL
ST Hours	50,192.75	61,181.00	41,839.25	152,213.00
OT Hours	17,287.5	18,821.00	13,048.00	48,997.75
DT Hours	1,915.50	5,688.00	2,346.25	9,929.75
Total Hours	69,237.00	85,670.00	57,233.50	212,140.50
Total Dollars	\$5,437,466.05	\$6,673,995.41	\$3,947,040.56	\$16,058,502.03

Delta Hours	9,537.50	9,128.00	2,358.50	21,024.00
Delta Dollars	\$1,041,912.50	\$891,930.95	\$197,797.74	\$2,131,640.79

CONTRACTOR 1

PERSONNEL ARRIVING > 5 MIN LATE | 479
PERSONNEL LEAVING > 10 - 20 MIN EARLY | 906
INVOICE DETAIL LINE DISCREPANCIES | 4,546

CONTRACTOR 2

PERSONNEL ARRIVING > 5 MIN LATE | 23
PERSONNEL LEAVING > 10 - 20 MIN EARLY | 482
INVOICE DETAIL LINE DISCREPANCIES | 2,267

CONTRACTOR 3

PERSONNEL ARRIVING > 5 MIN LATE | 23
PERSONNEL LEAVING > 10 - 20 MIN EARLY | 994
INVOICE DETAIL LINE DISCREPANCIES | 918

STREAMLINED TRANSACTIONS

myTrack streamlines back-office processes and supports greater overall productivity, jobsite safety, cost controls, and strengthens contractor relationships.

- 1 Activity** | Activity occurs when myTrack collects the labor hours, equipment utilization, and material usage. The users can see the time that the labor resources come in and leave the site and the actual hours earned.
- 2 Allocation** | Allocation is when the contractor distributes hours and costs available in myTrack to specific cost objects (PO, WO, WBS Elements).
- 3 Acceptance** | The Acceptance process is the final step for vendor timekeepers to charge the client-owner for the work. Acceptance provides a formal handoff for review and approval from the contractor timekeepers to the client-owner.
- 4 Authorization** | Authorization is a process where the client-owner representatives review, approve, or reject the accepted allocations of hours and costs to pay the contractors. (Typically, the supervisor or whoever is overseeing the work in the field)
- 5 Analyze** | Leverage myTrack data and business intelligence to make more informed decisions and highlight opportunities to reduce value leakage throughout the contract and contractor management process.

ABOUT MANAGEMENT CONTROLS INC.

For over 35 years, Management Controls has helped global leaders in the heavy industrial asset industry save 10% to 15% on contractor labor, equipment, and material spend. With myTrack, you can remove any emotion or cause for debate when it comes to timekeeping, worker safety, contract compliance, and more.

When you automate your timekeeping process and reduce the complexity of contractor data management, you not only protect your budgets, but you also know your sites are safer and more productive.

Our platform is used at over 350 industrial sites, processes over \$60 billion annually in contractor spend, and generates over \$5 billion in annual savings.

OUR CUSTOMERS





DISCOVER THE POWER
of Contractor Data Management

E | sales@mccorp.com

T | +1 855 898 8725

W | www.managementcontrols.com