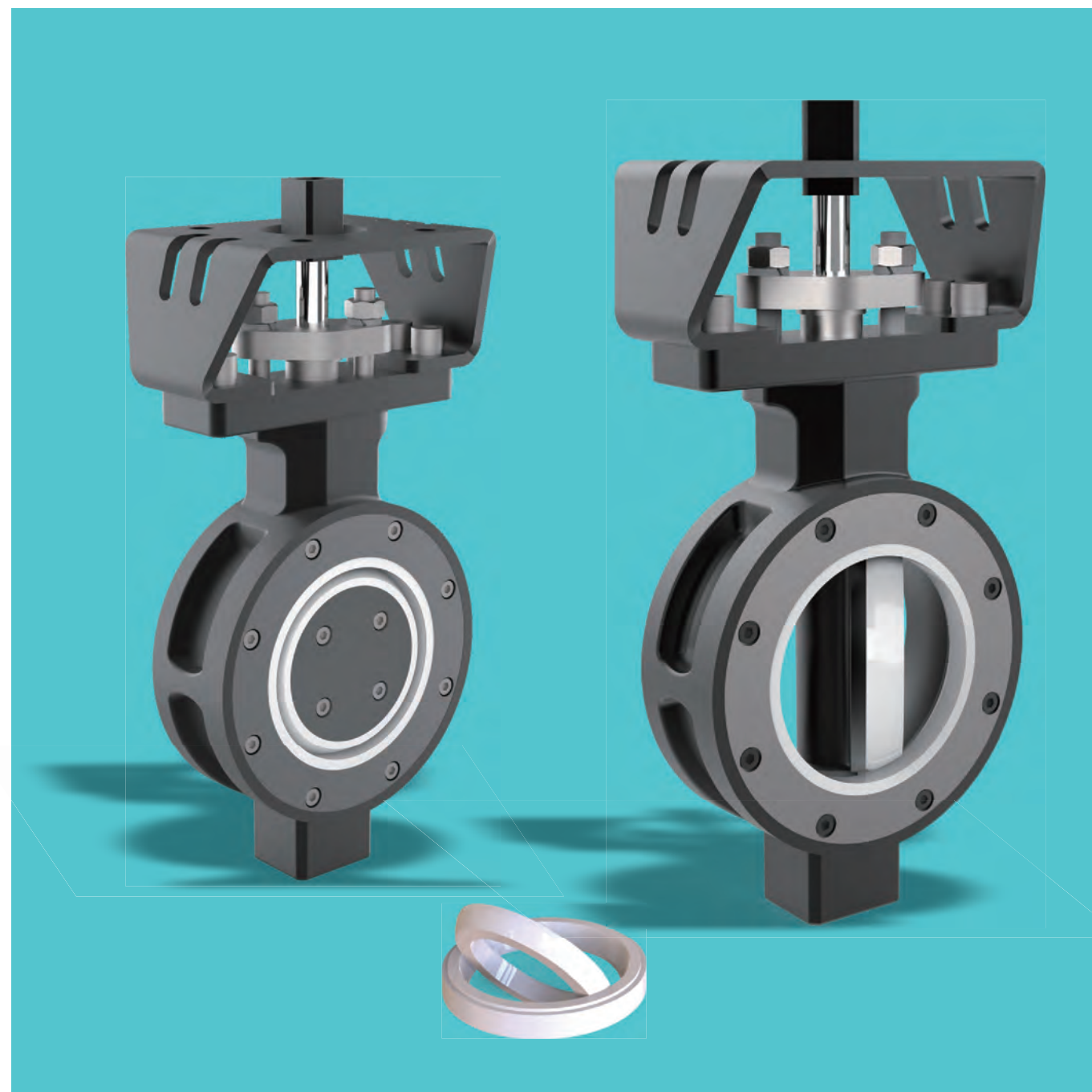


CBUT

Ceramic Butterfly Valves

For Bulk Material Conveying system and Slurry application



Ceramic Butterfly Valves

■ Ceramic Butterfly Valves

Eccentric butterfly valve has many advantages like simple structure, light weight, short structure and easy assembly. However, sealing face of metal sealing butterfly valve is easy to be abraded by gas-solid mixture and slurry containing high-hardness solids, which will cause leakage easily. Combining structure advantage of metal sealing butterfly valve with good performance of structure ceramics, we design CBUT series ceramic sealing butterfly valve.

CBUT series ceramic sealing butterfly valve is wafer connected. Body material could be carbon steel, stainless steel according to working conditions. If customers have special requirement, forged body is optional. Sealing ring of disc and seats are made of ceramics, so that sealing face will not be eroded and abraded by medium and make sure of sealing performance during long-time usage.

Pressure Ratings

PN10, PN16, ANSI CL150, JIS 10K

Size Range

DN50~DN300/ANSI 2"~12"/JIS 50A~300A

Design Standards

Flange Ends EN1092-1, ASME B16.5, JIS B2220

Face-To-Face API 609-Category B

Valve Testing API 598

■ Features

FOYO CBUT series ceramic seated butterfly valve is eccentric design. When valve is open, sealing ring of disc and seat depart, which will reduce open torque effectively. When valve is closed, sealing ring of disc and seat will make a shear effect to cut off solid and fiber in the medium to avoid foreign things getting stuck in the valve or cause leakage.

Sealing ring of disc and seat are made of high performance structure ceramics. ZrO₂, 99% Al₂O₃, STC, SiC and Si₃N₄ are available for different working conditions.

Sealing ring of disc and seat sealing is sphere sealing. It makes use of advanced technology and machining equipments. After precise grinding, sealing level could reach ANSI/FCI 70-2 V.

Actuation includes bare stem, gear, pneumatic actuator, electric actuator and so on. Actuator interfaces are designed according to ISO 5211.



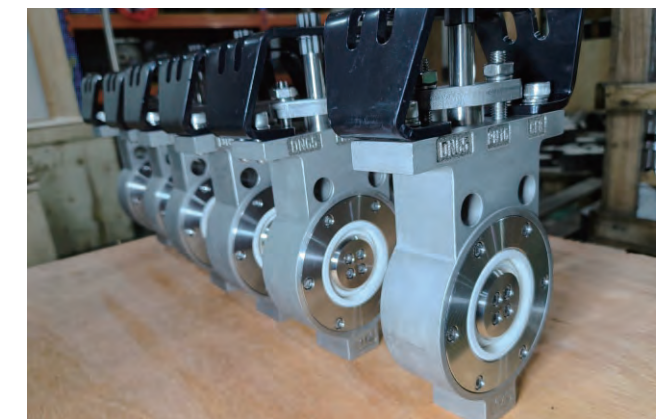
■ Applications

>99% Al₂O₃, ZrO₂, SiC and Si₃N₄ are made by Cold isostatic pressing molding and high sintering. All these ceramics will not interact with almost all organic solvent and inorganic chemical medium (except hydrofluoric acid). Sintered Tungsten carbide (STC) has good mechanical performance and thermal-shock performance, which is suitable for high temperature, high pressure and high abrasive working conditions.

Structure ceramics has wonderful chemical stability, which makes sure that ceramic sealing face of butterfly valve will keep good sealing after long times of usage in all kinds of strong acid and strong alkali mediums.

Currently, FOYO CBUT series ceramic butterfly valves have shown great performance in steel mill, metallurgy, mining, pulp&paper, environment protection, etc

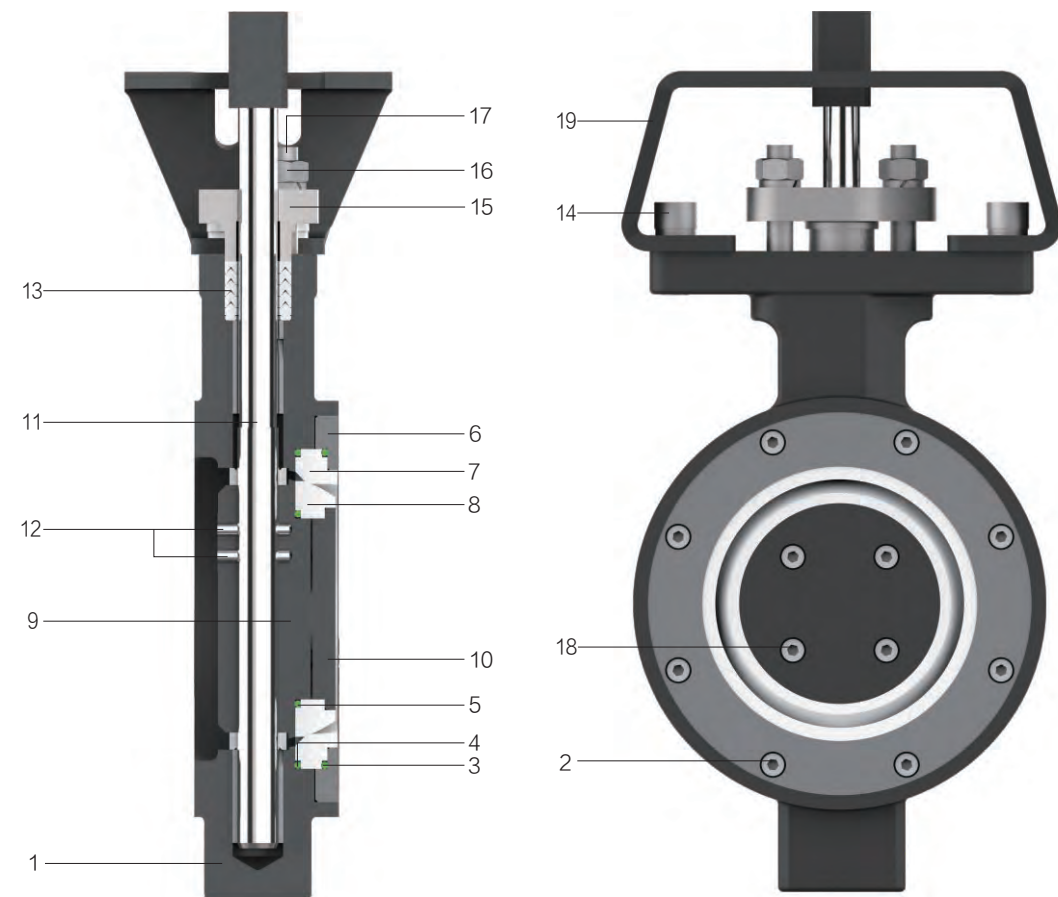
FOYO's experienced engineers will choose the most suitable material and solution for different working conditions.



Ceramic Butterfly Valves

FOYO

Section View

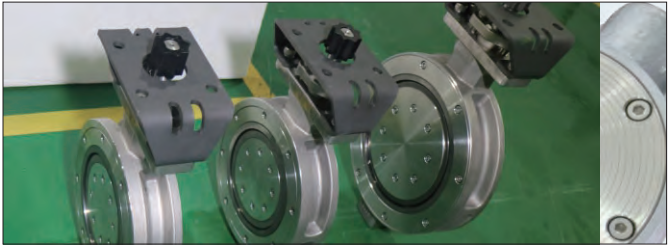


Parts List

Item	Part Name	Material
1	Body	A216 WCB/A351 CF8
2	Screw	A2-70
3	O-Ring	FKM/VMQ
4	O-Ring	FKM/VMQ
5	O-Ring	FKM/VMQ
6	Seat Container	A216 WCB/SS304
7	Seat	Ceramics
8	Sealing Ring	Ceramics
9	Disc	A216 WCB/A351 CF8
10	Disc Container	A105/SS304
11	Stem	17-4PH
12	Pin	SS304
13	Packing	PTFE/Graphite

Item	Part Name	Material
14	Screw	A2-70
15	Gland Flange	A216 WCB/SS304
16	Nut	A194 2H/A194 8
17	Bolt	A193 B7/A193 B8
18	Screw	A2-70
19	Yoke	A216 WCB
20		

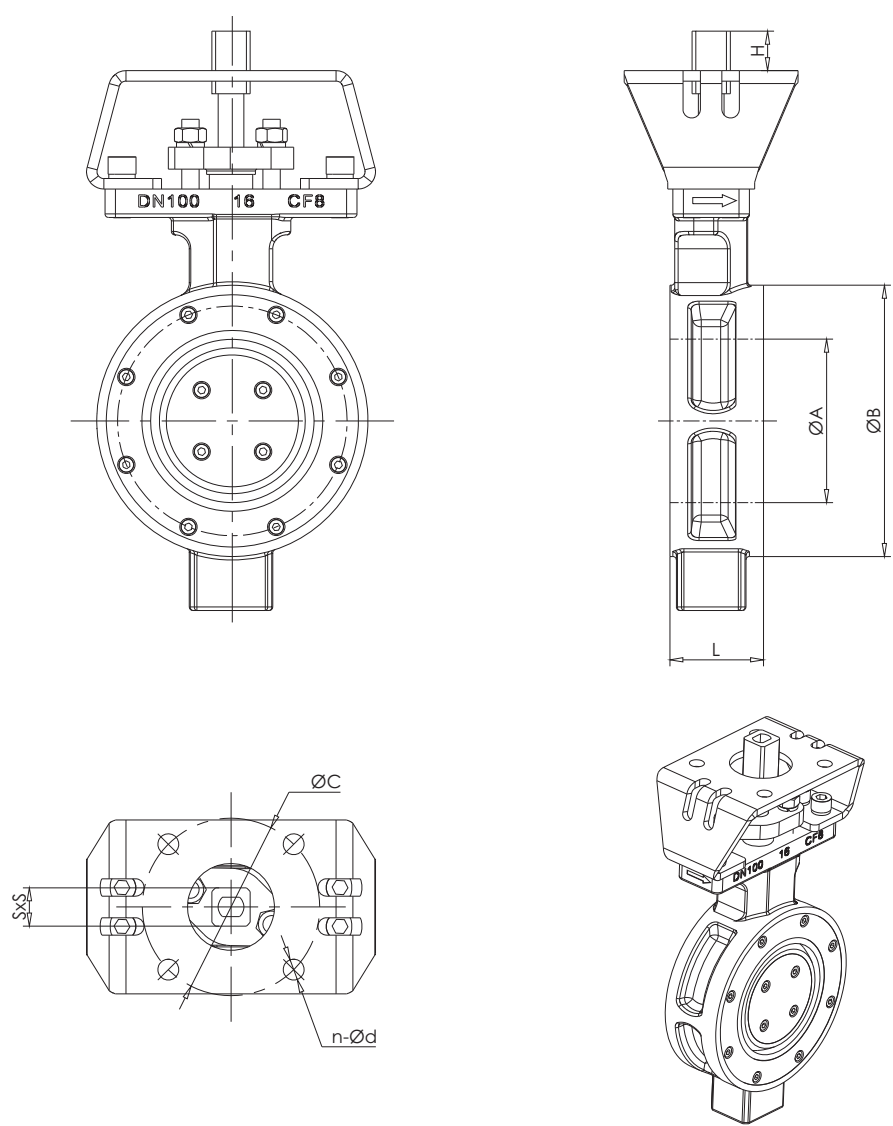
Note: Parts material may vary according to different working conditions.



Ceramic Butterfly Valves

FOYO

General Assembly Drawing



Size		L	ΦA	ΦB	ΦC	ISO 5211	n-Φd	SxS	H	Torque (N.M)
DN	NPS									
DN50	2"	44	52	102	70	F07	4-Φ10	14x14	14	70
DN65	2-1/2"	48	60	116	70	F07	4-Φ10	14x14	14	90
DN80	3"	48	72	132	70	F07	4-Φ10	14x14	14	160
DN100	4"	54	94	156	102	F10	4-Φ12	22x22	22	220
DN125	5"	57	112	185	102	F10	4-Φ12	27x27	27	280
DN150	6"	57	136	217	102	F10	4-Φ12	27x27	27	300
DN200	8"	64	188	273	125	4-Φ14	4-Φ14	27x27	27	450
DN250	10"	71	234	330	125	4-Φ14	4-Φ14	27x27	27	600
DN300	12"	81	282	386	140	4-Φ18	4-Φ18	36x36	36	700