

DATASHEET
(Modifications reserved)**solids- Rotary Valve / SRVS-Clean****Designline:**■ **Clean Design**

Rotary valves are used for the dosing, feeding or the discharge of fine-grained and powdered materials or granulates, from of silos and/or feed into pressure or vacuum conveying pipelines; even for dust explosion hazardous products

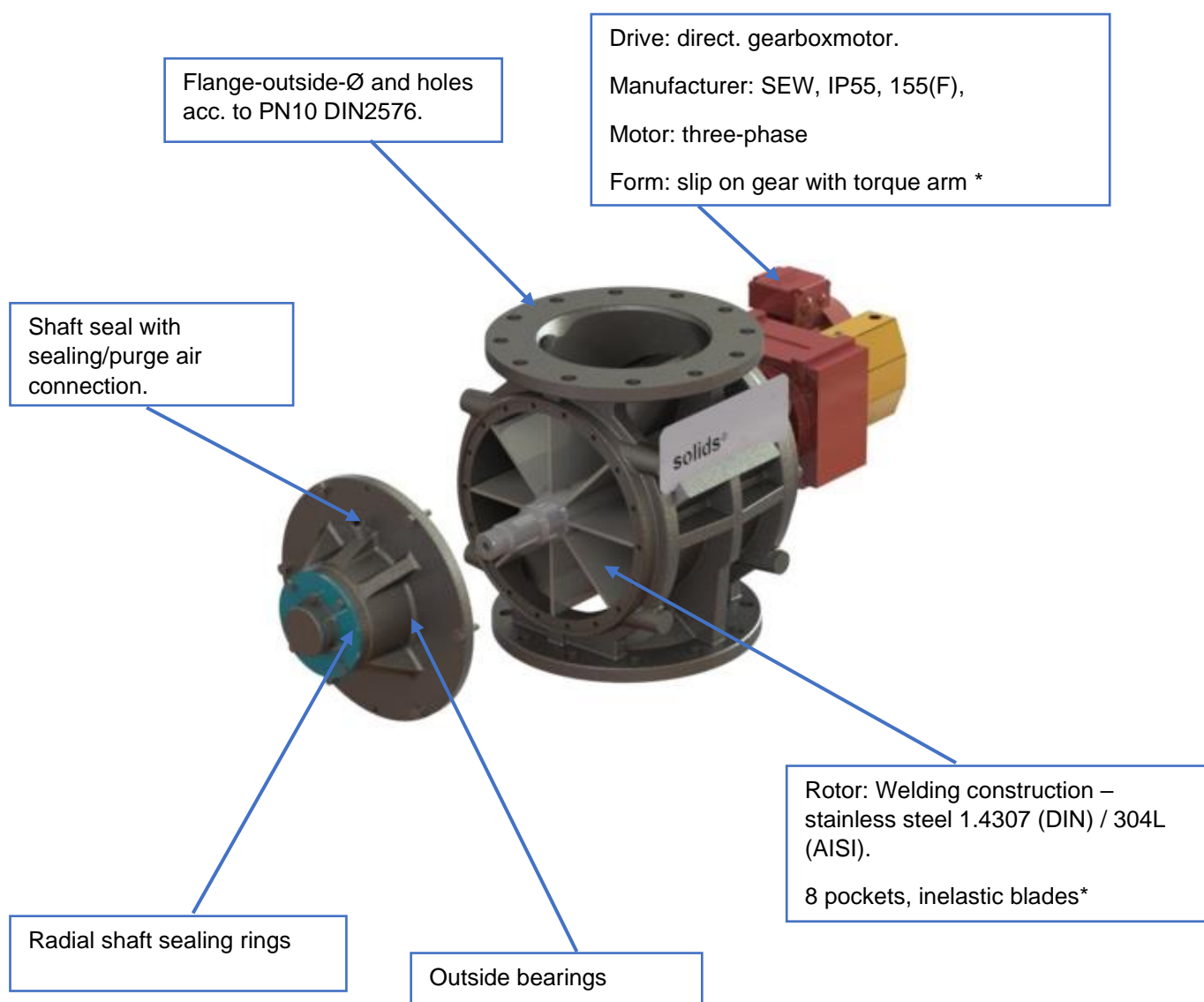
USPs

- Robust and low-wear
- Homogeneous flow
- Outlet geometry for complete emptying of the cells
- Gas-tight to the outside
- Type approved by a certified body, with CE type examination ATEX directive 2014/34/EU in zone 20 interior.
- Optional protective system, type SRVS1, shock pressure proof Pred 1 bar and flame propagation proof.

Applications

- Maximum pressure: -0,7 bar g up to 1,5 bar g.
- Maximum product temperature: 150° C With corresponding clearance for constant operating temperature.
- Bulk solid data: Powder form, up to medium hardness. Free flowing up to limited flowing products.
- Option: protective system, type SRVS1, shock pressure proof P_{red} 1 bar and flame propagation proof.
- Suitable for zone 20 inside category 1 according to ATEX 2014/34/ EU. With type examination test by a notified body.

Details



* Changes possible on request

Default configuration

- Housing: casted stainless steel 1.4408 (DIN) / CF-8M (AISI).
- Rotor: welding construction – stainless steel 1.4307 (DIN) / 304L (AISI). 8 rounded pockets.
- Surface treatment: Glass bead blasted and passivate

Features

01. Rotor with adjustable blades.

01.1 polyurethane

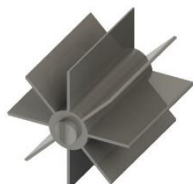
01.2 neoprene

Size	V / turn
SRVS150	4 dm ³
SRVS200	7 dm ³
SRVS250	16 dm ³



02. Rotor with inelastic blades made of stainless steel 1.4307 (DIN) / 304L (AISI).

Size	V / turn
SRVS150	5 dm ³
SRVS200	10 dm ³
SRVS250	20 dm ³



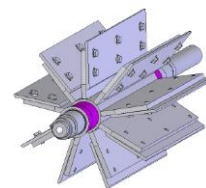
03. Rotor with reduced volume, about half of the standard volume made of stainless steel 1.4307 (DIN) / 304L (AISI).

Size	V / turn
SRVS150	2,4 dm ³
SRVS200	4,7 dm ³
SRVS250	9,7 dm ³

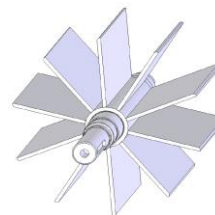


04. Rotor with adjustable blades made of stainless steel 1.4307 (DIN) / 304L (AISI).

Size	V / Turn
SRVS150	4 dm ³
SRVS200	7 dm ³
SRVS250	16 dm ³



06. Rotor with 10 pockets for difference pressure > 500 mbar.



12. Casted parts made of 1.4408 (DIN) / CF-8M (AISI) rest 1.4404 (DIN) / 316L (AISI), according to the selected rotor options. Incl. leakage air collector/ granule inlet/ blowing shoe.

13. Casted parts made of 1.4408 (DIN) / CF-8M (AISI) rest 1.4571 (DIN) / 316Ti (AISI), according to the selected rotor options. Incl. leakage air collector/ granule inlet/ blowing shoe.

14. Wear protection treatment for housing, caps and rotor.

14.1 Nitriding: heat treatment by absorption. Penetrates until 50 µm. Obtained hardness: between 600 and 1000 HV. Treatment applied to body, caps and rotor.

14.2 Electroless nickel plating: metallic film of NiP. Obtained film: between 25 and 35 µm. Obtained hardness: between 550 and 650 HV. Treatment applied to body and caps, rotor with nitriding treatment.

14.3 Hard chrome plating: metallic film of chrome. Obtained film: 100 µm. Obtained hardness: 900 HV. Treatment applied to body and caps, rotor with nitriding treatment.

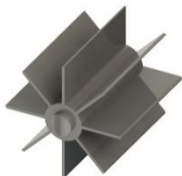
22.1 Electrical parts outside, suitable for zone 2/22.

22.2 Electrical parts outside, suitable for zone 1/21.

23. Protective system, type SRVS1, shock pressure proof P_{red} 1 bar and flame propagation proof. Up to 20 turn/min. Data like table of the basical version, rotor like described in the basical version, not for metal dusts. Certificate number FTZÚ 18 ATEX 0126X.

23.1 Rotor with inelastic blades, made of stainless steel 1.4307 (DIN) / 304L (AISI).

Size	V / Turn
SRVS150	5 dm ³
SRVS200	10 dm ³
SRVS250	20 dm ³



23.2 Rotor with reduced volume, about half of the standard volume made of stainless steel 1.4707 (DIN) / 304L (AISI).

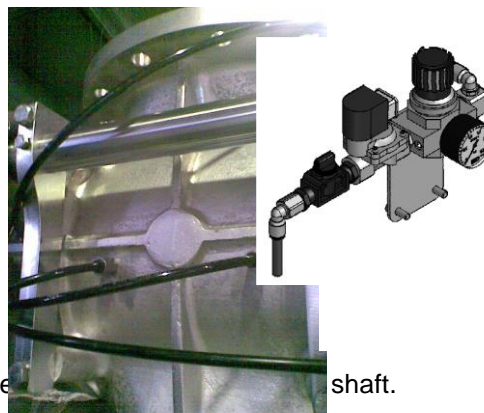
Size	V / Turn
SRVS150	2,4 dm ³
SRVS200	4,7 dm ³
SRVS250	9,7 dm ³



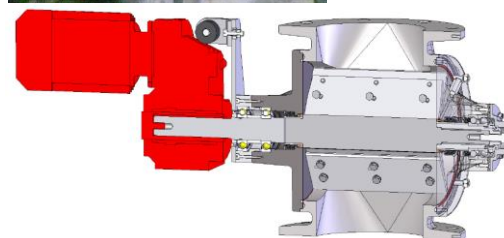
50. Pneumatic installation for sealing/purge air, consisting of 2/2-way solenoid valve, pressure regulator and nozzles.



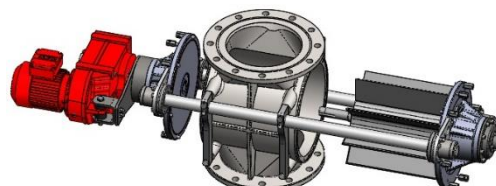
50.1 Pneumatic discharge of the pockets for cohesive products, incl. pneumatic installation.



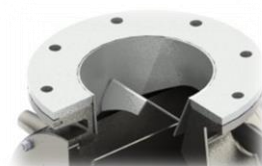
73. Re shaft.



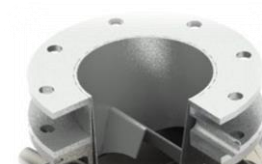
74. Pull out device with leading rails made of tempered steel with hard chromium surface (only in combination with option 73).



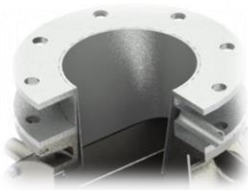
84 Inlet for granules, grain size >500 µm, made of stainless steel 1.4307 (DIN) / 304L (AISI). Incl. connection parts for assembling.



85. Leakage air collector for non-granules, made of stainless steel 1.4307 (DIN) / 304L (AISI). Incl. connection parts for assembling.



85.1 Leakage air collector with granule inlet, grain size > 500 µm, made of stainless steel 1.4307 (DIN) / 304L (AISI). Incl. connection parts for assembling.



86. Blowing shoe for pneumatic transport made of stainless steel 1.4307 (DIN) / 304L (AISI). Incl. connection parts for assembling.



94. Standstill monitoring with star and sensor.

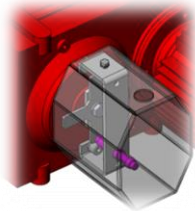


Table: Technical details

Type	Inlet / Outlet-Ø **	Height	A	B*	Volume / Round	Weigth (kg)
SRVS1505C02	Ø 150 mm	320 mm	212 mm	512 mm	4,5 dm ³	130 kg
SRVS2010C02	Ø 200 mm	375 mm	260 mm	634 mm	9,4 dm ³	165 kg
SRVS2520C02	Ø 250 mm	450 mm	313 mm	642 mm	19 dm ³	220 kg

** Flange-outside-Ø and holes acc. to PN10 DIN2576

*May vary depending on gear motor

