



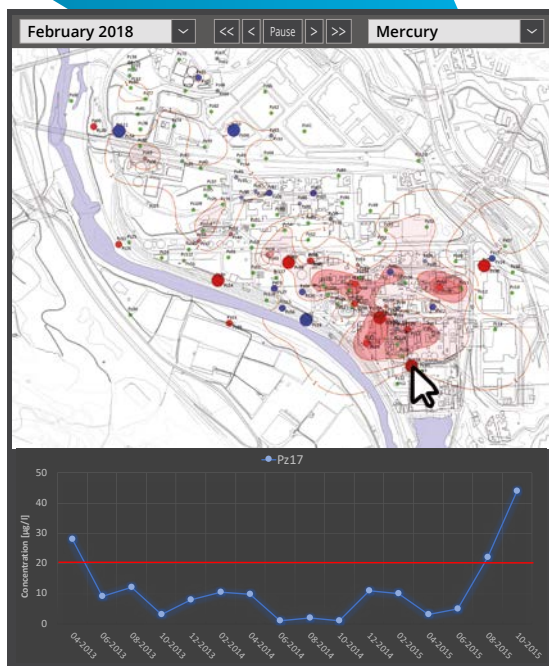
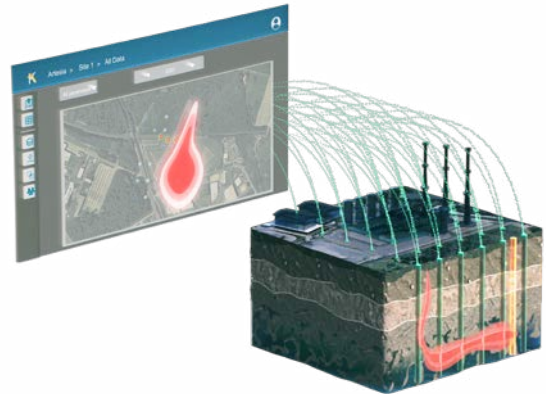
**An Eye Beneath  
the Surface**

**See To Know,  
Know to Master**

Large industrial sites that exploit groundwater or have to manage groundwater contamination generally have very complex databases where thousands of results are stored (chemical analyses, water levels, technical parameters). Environment managers do not have an overview and therefore have little control over the situation, which can lead to irreversible damages, extremely costly pollution to clean up, lawsuits and a deteriorating corporate image.

**Krigis brings you the solution to control underground contamination**

**KRIGIS is the time-tested tool you can trust to deliver insightful maps and indicators**



## ON MAP CONSULTATION WITH INTERPOLATION

The instantaneous interpolation of the concentrations, generated automatically, provides at a glance a map of the state of the site, highlighting the areas to be monitored.

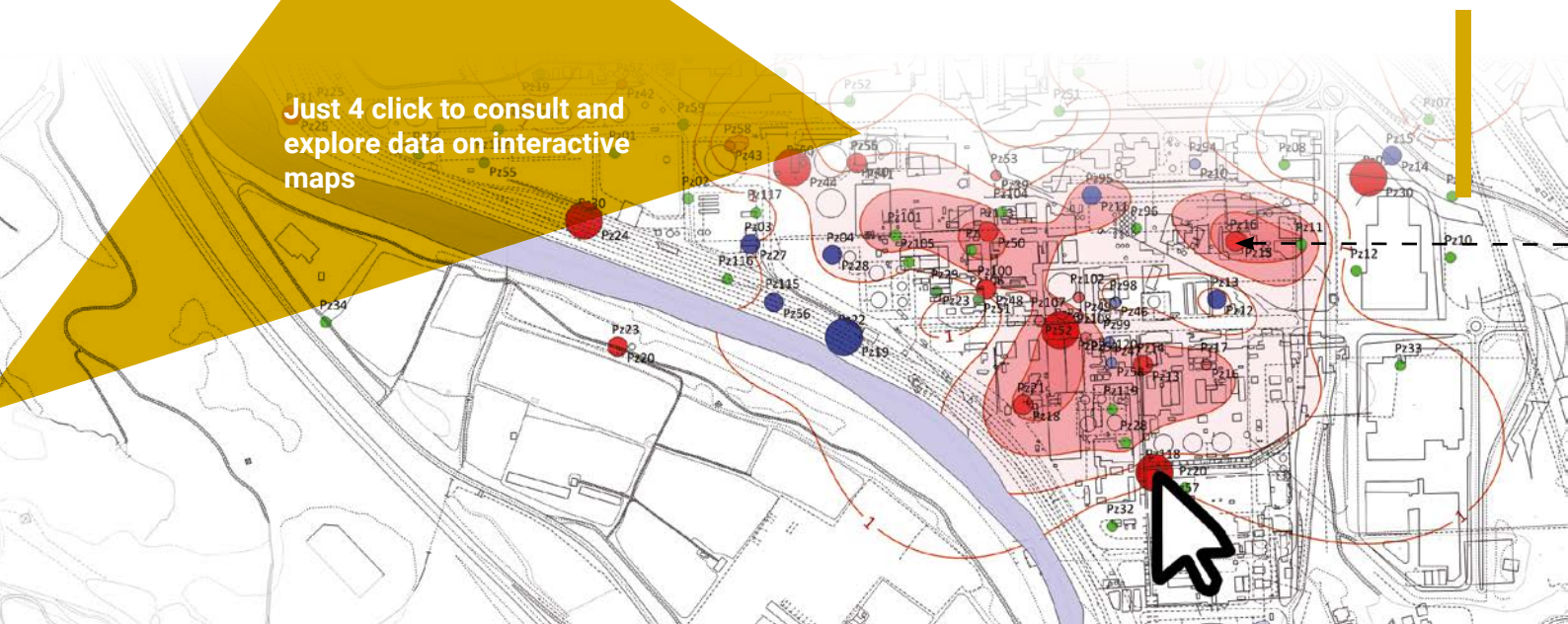
By navigating from one measurement campaign to another with a simple click, you get a film of the evolution of the concentrations up to today, which allows you to anticipate the future evolution and make strategic decisions of production, decontamination or containment.

KRIGIS is very interactive by clicking on a point, you get its history.

## ALERT SYSTEM

KRIGIS detects worrisome increases and asks to consult the history of certain points designated by the system.

**Just 4 click to consult and explore data on interactive maps**





## TABLE CONSULTATION

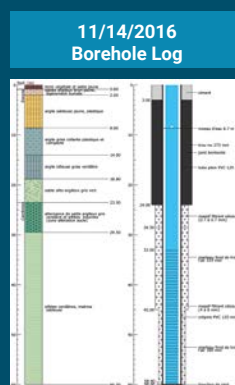
The data tables remain easily accessible and are abundant in analysis support resources: automatic charts, crucial statistics, ability to analyse a particular campaign, well or chemical compound on an individual basis. It is ideal for detailed analysis in a familiar environment with simple spreadsheet.



## SMART ESG REPORTING

KRIGIS automatically generates the environmental reports and pollution indicators required for annual ESG reporting.

You can therefore rely on clear, concise communication to meet your environmental obligations.



## YOUR DATABASE BECOMES MUCH RICHER THAN ANALYSIS LISTS

In addition to measurements, you have maps, photos and field films, drilling logs and all this accessible on plan.

KRIGIS illuminates in a very visual way complex and sensitive issues of the underground, it brings you a globalized mastery of your underground

## SMART DATA IMPORT

Powerful import tools allow for debugging of data before it is entered into database. Intelligent systems allow KRIGIS to recognize encoding errors and to suggest corrections, spelling of well names and chemical compounds are adjusted, units are changed

automatically, water depths are transformed into piezometric levels and the pumped volumes generate flows. Statistical analysis warns against unrealistic or very worrisome measures.

**No training needed !  
Explore, understand  
and masterize !**

## SMART DATA SHARING

Thanks to its ability to select groups of wells or groups of chemical compounds, the analysis is very flexible. thanks to its sharing tools, KRIGIS allows you to easily select the data to share with a collaborator. Your data will be kept safe and confidential.

✓	ID#	#01b	
📅	SAMPLING DATE	10-08-2017	
★	POINT	PZ 24	DICTIONNARY POINTS
🧪	PARAMETER	Mercury	DICTIONNARY PARAMETERS
⬇️	VALUE	4.5 Unit mg/l	DICTIONNARY UNITS <b>ALERT UNEXPECTED VALUE</b>
📖	SOURCE	Data_august.xlsx	
💬	COMMENT	After 20 minutes of pumping	
📷	TAKE A PICTURE/ VIDEO		VALIDATE



+32 (0)496 18 38 20

info@krigis.tech

Liège science park  
Rue du Bois Saint-Jean, 15/1  
B-4102 Seraing (Belgium)

[www.krigis.tech](http://www.krigis.tech)

**ARTESIA**

HYDROGEOLOGY &  
ENVIRONMENT