



C 600

Compact, tough and versatile

SERIES™

CHASSIS TYPE



RUBBER WHEEL



CRAWLER



SKID FRAME



WHELLED



CSK SONDAJ Madencilik ve Mühendislik Ltd. Şti.

SERIES™

CSK ALTERNATİF MAKİNA SANAYİ TİCARET A.Ş.

Technical specifications

Drilling Capacity*	Metric	US
Drilling Capacity with HQWL	600 m (Max)	1 968 ft (Max)
Drilling Capacity with NQWL	750 m (Max)	2 460 ft (Max)
Drilling Capacity with BQWL	1000 m (Max)	3 280 ft (Max)

Rotation Unit	Metric	US
Spindle Inner Diameter	101 mm	3.97"
Chuck Axial Holding Force	150 kN	33 729 lbf
Speed Range	100 – 1200 \ 1400 rpm	
Maximum Torque	1 530 Nm	1 130 lbf

Rod Holder	Metric	US
Maximum Rod Size***	89 mm	3.50 "
Holding Force	45 kN	10 120 lbf
Axial Holding Force TC Inserts	90 kN	20 240 lbf

Feed Frame	Metric	US
Feed Force	89 kN	20 000 lbf
Pull Force	89 kN	20 000 lbf
Rod Running – Out	0,8 m/s	2.62 ft/s
Rod Running – in	0,8 m/s	2.62 ft/s
Feed Stroke	Short Standard	850 mm 1 800 mm
Feed Length	Short Standard	2 890 mm 3 600 mm

Power Unit	Metric	US
Diesel Engine	119-130 kW	159.5- 174.3 hp
Electric Motor	90-110 kW	120.6 – 147.5 hp

Main Pump	Metric	US
Flow	185 l/m	48.8 gals per min
Pressure	300 bar	4 351 psi

Service Pump	Metric	US
Flow	65 l/m	17.1 gals per min
Pressure	240 bar	3 480 psi

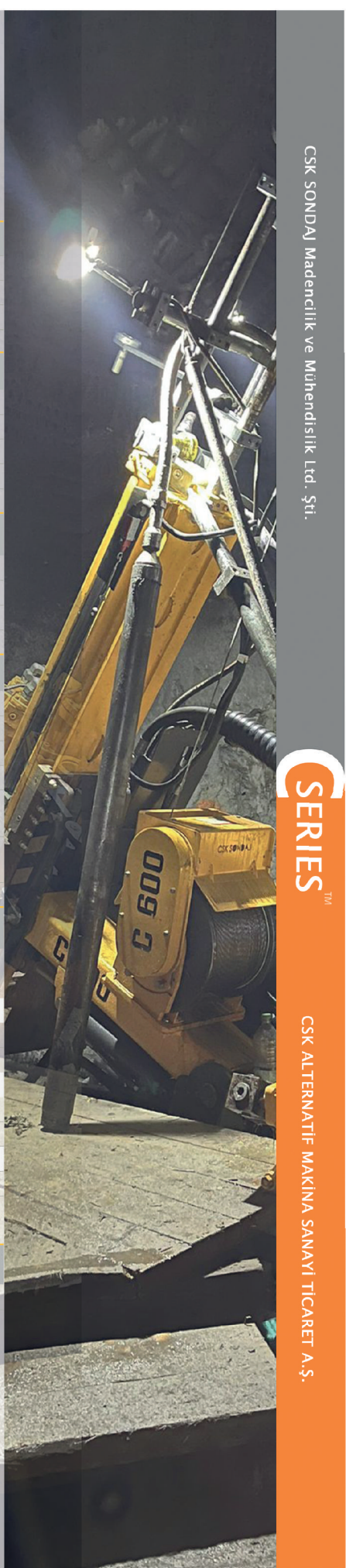
Auxiliary Pump**	Metric	US
Flow	65 l/m	17.1 gals per min
Pressure	200 bar	2 900 psi

CSK-135 Mud Pump	Metric	US
Flow (Max.)	135 l/min	35.6 gal per min
Pressure (Max.)	70 bar	1 015 psi

* CSK cannot guarantee these capacities will be reached in all working conditions due to varying factors such as used, conditions of the ground and differences in operation.

** 110 KW Electric Motor

*** Bore (without jaws) 102 mm (4.0 in)



CSK SONDAJ Madencilik ve Mühendislik Ltd. Şti.

SERIES™

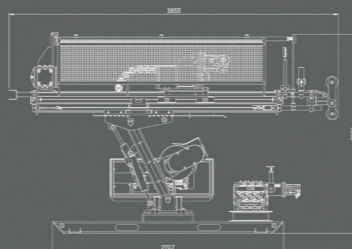
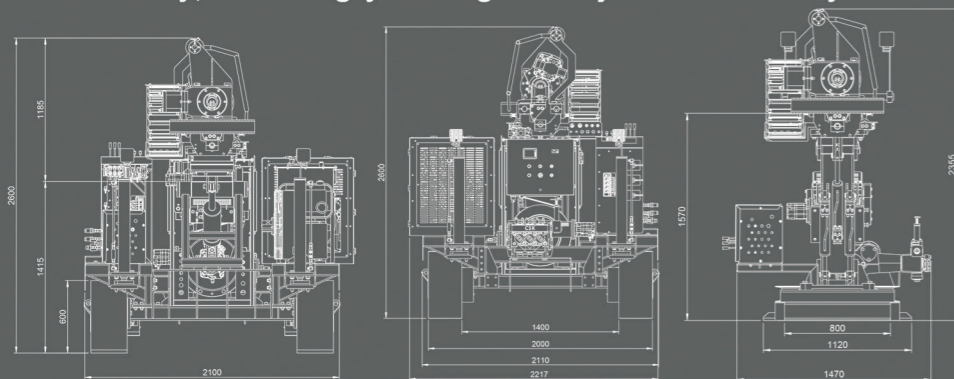
CSK ALTERNATİF MAKİNA SANAYİ TİCARET A.Ş.

C600

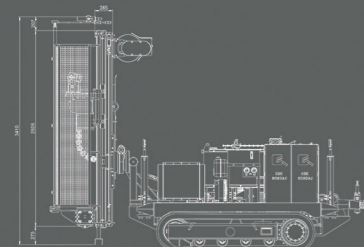
ore Drilling Rig

Underground & Surface

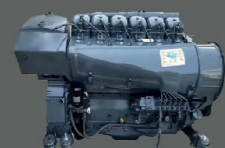
Powerful and compact, the CSK C series features a versatile modular design. They can be fitted with various alternatives and options to best suit your particular requirements regarding rock type, hole diameter and hole depth. C Series machines drill straight upwards, downwards or horizontally, enabling you to get the job done easily.



The wire line winch is mounted in the optimum position. It's possible to drill from -90° to $+90^{\circ}$ without needing to reposition the winch.



2 Cylinder Diesel Engine



6 Cylinder Diesel Engine

OPTIONAL

Electrical Motor



OPTIONAL



CSK-135 Mud Pump

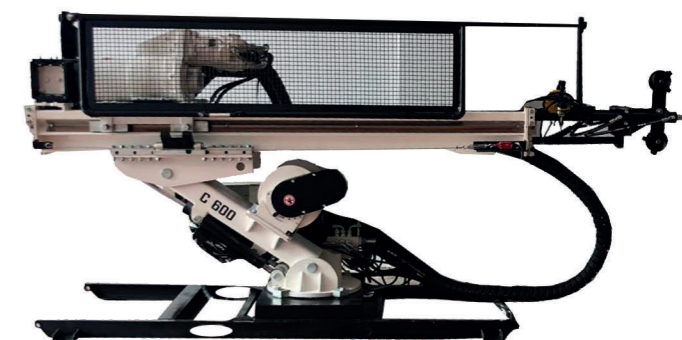
- The C600 is a powerful and flexible machine.
- Feed frame with equal pull and push force
- Rod holder closes using gas pressure
- The gear case is sealed completely
- Handle drilling from $+90^{\circ}$ to -90° angles.



C-600

Underground/Surface Exploration

Hydraulic Rig Fixing Piston



Each unit is designed with oversized bearings to increase durability. The gear case is sealed completely to handle drilling from $+90^{\circ}$ to -90° angles.



Sturdy control panel featuring ergonomic design provides operator with full control from a safe distance.



Complete Diesel - Crawler
Total Weight : 6.500 kg



Drilling Rig Electric Motor
Walking System Diesel Engine
Total Weight : 6.300 kg



Electric Motor - Wheeled
Total Weight : 3.600 kg



Electric Motor - Skid Frame
Total Weight : 3.100 kg