

DATASHEET
*(Modifications reserved)***solids- Rotary Valve ZRSS- Clean****Designline:****■ Clean Design**

Rotary valves are used for the dosing, feeding or the discharge of fine-grained and powdered materials or granulates, from of silos and/or feed into pressure or vacuum conveying pipelines, even for dust explosion hazardous products

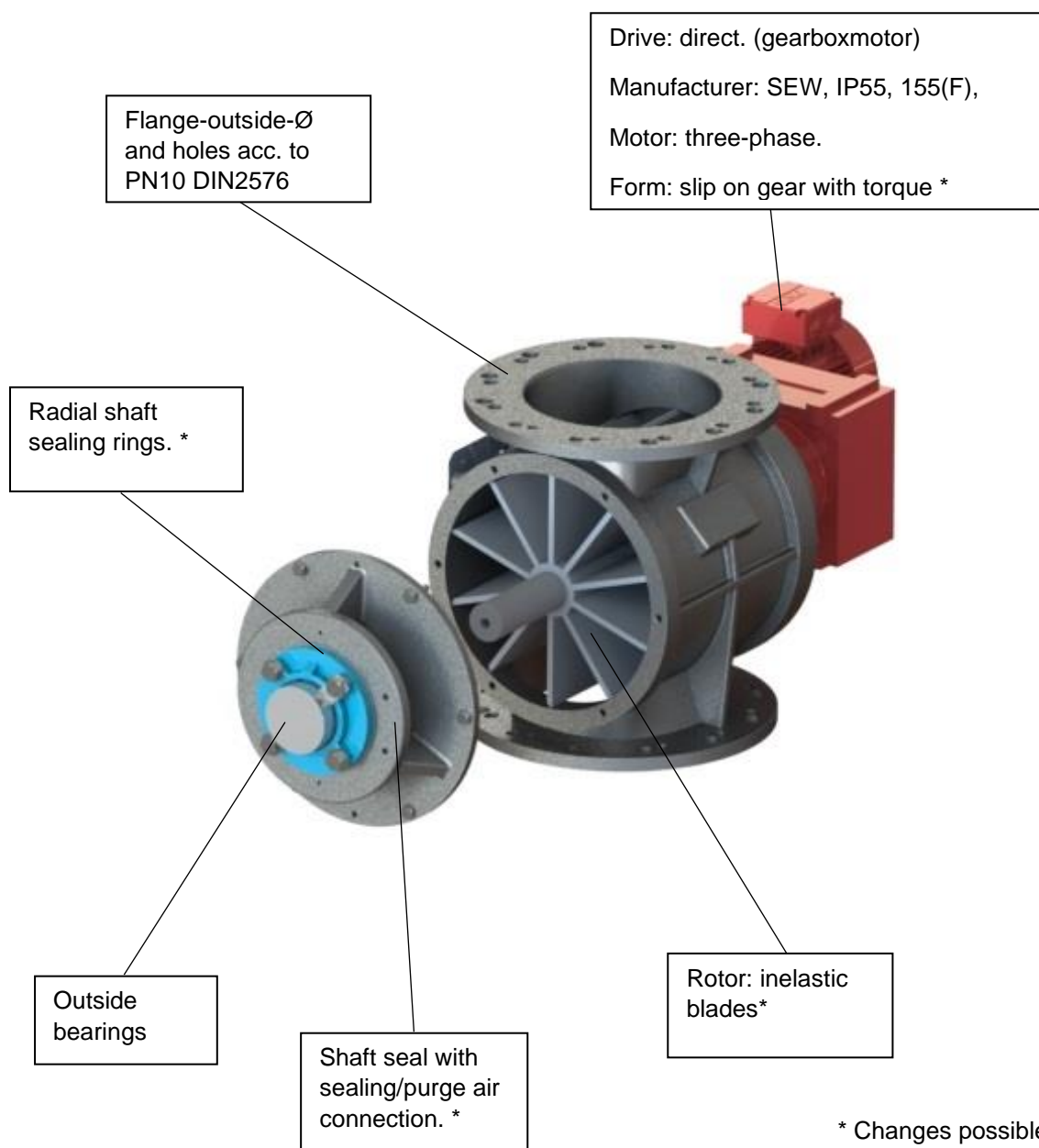
USPs

- Robust and low-wear
- Homogeneous flow
- Outlet geometry for complete emptying of the cells
- Gas-tight to the outside

Applications

- Maximum pressure: -0,5 bar g up to 1 bar g.
- Max. product temperature: 150° C. With corresponding clearance for constant operating temperature.
- Max/min. ambient temperature $-10\text{ °C} \leq T \leq 50\text{ °C}$.
- Bulk solid data: Powder form, up to medium hardness. Free flowing up to limited flowing products.
- Free flowing up to limited flowing products.
- Suitable for zone 22 inside category 3 according to Atex 2014/34/EU.

Details



Default configuration

- Housing: casted stainless steel 1.4308 (DIN) / CF-8 (AISI).
- Rotor: welding construction – stainless steel 1.4307 (DIN) / 304L (AISI). Inelastic blades.
- Surface treatment: blasted and passivated

Features

01. Rotor with 8 adjustable polyurethane blades.

0.01. polyurethane

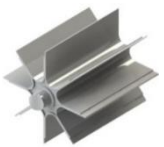
0.02. Neoprene

Size	V / turn
ZRSS-150/225	1,8 dm ³
ZRSS-250/300	5,2 dm ³
ZRSS-250/430	15 dm ³



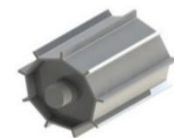
02. Rotor with 8 rounded pockets made of carbon steel.

Size	V / turn
ZRSS-150/225	2 dm ³
ZRSS-250/300	5,3 dm ³
ZRSS-250/430	15 dm ³

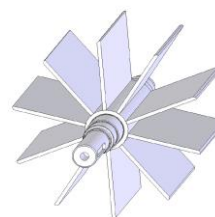


03. Rotor with 8 pockets with reduced volume made of carbon steel.

Size	V / turn
ZRSS-150/225	0,7 dm ³
ZRSS-250/300	2 dm ³
ZRSS-250/430	9,5 dm ³



06. Rotor with 10 pockets for difference pressure > 500 mbar.



12. Parts in contact with the material, made of stainless steel 1.4404 (DIN) / 316L (AISI), casted parts in 1.4408 (DIN) / CF-8M (AISI). Including leakage air collector / granulate inlet / blowing shoe.

13. Parts in contact with the material, made of stainless steel 1.4571 (DIN) / 316Ti (AISI), casted parts in 1.4408 (DIN) / CF-8M (AISI). Including leakage air collector / granulate inlet / blowing shoe.

14. Wear protection treatment for housing, caps and rotor:

14.1 Nitriding: heat treatment by absorption. Penetrates until 50 µm. Obtained hardness: between 600 and 1000 HV. Treatment applied to body, caps and rotor.

14.2 Electroless nickel plating: metallic film of NiP. Obtained film: between 25 and 35 µm. Obtained hardness: between 550 and 650. Treatment applied to body and caps, rotor with nitriding treatment.

14.3 Hard chrome plating: metallic film of chrome. Obtained film: 100 µm. Obtained hardness: 900 HV. Treatment applied to body and caps, rotor with nitriding treatment.

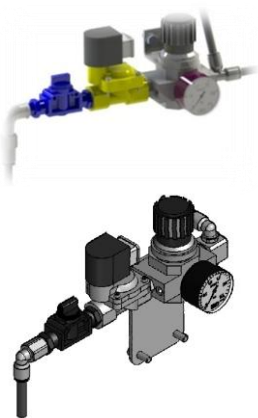
22.1. Electrical parts outside, suitable for zone 2/22.

22.2. Electrical parts outside, suitable for zone 1/21.

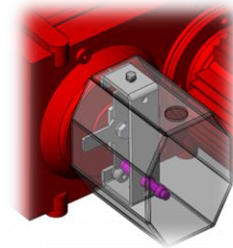
22.3. Suitable for zone 21 inside category 2 according to Atex 2014/34/EU.

50. Pneumatic installation for sealing / purge air, consisting of 2/2-way solenoid valve, pressure regulator and nozzles.

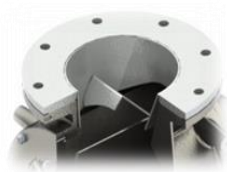
50.1. Pneumatic discharge of the pockets for cohesive products, incl. pneumatic installation



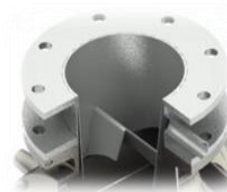
94. Standstill monitoring with star and sensor.



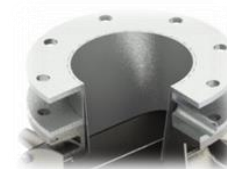
84. Inlet for granules, grain size > 500 µm, made of stainless steel 1.4307 (DIN) / 304L (AISI). Including connection parts for assembling.



85. Leakage air collector with granules, made of stainless steel 1.4307 (DIN) / 304L (AISI). Including connection parts for assembling.



85.1. Leakage air collector for non-granules, made of stainless steel 1.4307 (DIN) / 304L (AISI). Including connection parts for assembling.



86. Blowing shoe for pneumatic transport made of stainless steel 1.4307 (DIN) / 304L (AISI). Including connection parts for assembling.

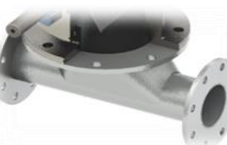


Table: Technical details

Type	Inlet / Outlet-Ø *)	Height	Volume / Round	Feeder no	Weigth (kg)	A	B**
ZRSS1502C02	Ø 150 mm	225 mm	2,1 dm ³	6	50Kg	330 mm	526 mm
ZRSS2505C02	Ø 250 mm	300 mm	5,6 dm ³	8	80Kg	305 mm	736 mm
ZRSS2519C02	Ø 250 mm	430 mm	19 dm ³	10	180Kg	308 mm	720 mm

*) flange´s outside diameter and holes according to DIN 2576 PN10

**May vary depending on gear motor

