



Community Connection Initiatives One Page Guide

WHAT? **Community Connection Initiatives** create paths for impactful community projects. Each Special Program and Community Service Program promote ways in which community service projects help to create lasting community outcomes, build membership, and give strength to the GFWC volunteer organization.

WHY? GFWC's Strategic Plan has objectives and tasks to build awareness and recognition of who GFWC volunteers are, what the organization accomplishes, and allows GFWC efforts to be recognized in local communities highlighting our GFWC *Living the Volunteer Spirit* brand.

WIN-WIN? Local clubs participate in the **Community Connection Initiatives** reporting project outcomes in the program area, and may also qualify for the Community Impact Program (CIP) awards – as long as they meet the guidelines and submit their CIP award entry correctly. Your club's efforts are recognized in the community and help to build GFWC's branding of grassroots volunteering, and your club has the option to compete for the CIP financial award.

SPECIAL PROGRAMS COMMUNITY CONNECTION INITIATIVES



Signature Program: BECOME A CHAMPION: BE THE VOICE FOR THOSE WHO HAVE NO VOICE.

What can clubs do?

Teach safe and healthy relationship skills to our youth and adults.

Advocate and support legislation that provides stricter laws in States against abusers and rights for victims.

Work with local shelters and find out how you can help and what they need. Sometimes, it's the items we overlook that matter the most.

Encourage your club to support victim-centered services, which could include, therapy, housing programs, teen dating violence prevention, and legal assistance.

The National Domestic Violence Hotline: 1-800-799-7233 or Text START to 88788 can be used on your social media tag lines, added on all printed materials, and used on websites. Become a Champion and Energize More People Out there With Educating Real survivor knowledge (EMPOWER).



Juniors' Special Program: BE A CHAMPION IN THE LIVES OF CHILDREN

What can clubs do?

- Work with your local police and social services agencies
- Spruce up their children's waiting room areas. Clean, paint, and add children's-size furniture items to the room to bring warmth and caring into the surroundings.
- Create a book nook and art area and keep items stocked.
- Post on social media and invite others to help.
- Add a little "sparkle" to a local shelter, youth center, social service office, or other emergency location.

Partner with local businesses to provide needed supplies

COMMUNITY SERVICE PROGRAMS COMMUNITY CONNECTION INITIATIVES



Environment: Engage in NATURE

What can clubs do? Keep close to nature's heart. Enjoy your surroundings.

- Recognize conservation and preservation of our parks. Educate and engage others on the importance of trees, birds, wildlife, plants, animals, water and clean air.
- Utilize resources of conservation and incorporate them daily including recycling, reducing and reusing.
- Provide useful information on the impact of the footprints left in nature. Purchase books, provide classes, encourage "days in nature."
- Invite local experts to give programs on a conservation project, earth friendly gardening class, have instructional class about clean water and run off of hazardous materials.
- Take a day trip. One tank trip. Nature walks.

Partner with local businesses, local media, Wildlife Officers, Forest and Park Rangers, artists and environmentalists.



Civic Engagement & Outreach is "PREPARATION SAVES LIVES".

What can clubs do?

- Host CPR and First Aid training classes - collaborate with your local fire department, ambulance association and the American Red Cross
- Raise funds to cover the costs of classes for community members who cannot afford to participate
- Raise funds to provide AED devices for your local community - ask your local fire department and/or ambulance association for suggestions of where they are most needed
- Create your own "Family Emergency Binder"

Partner with local emergency groups to spread the word



Health and Wellness: Caregiver's Circle -The Power of the Community to Create Health

What can clubs do? Promote a Caregiver's Circle of support for those who have taken care of or are taking care of a loved one by:

- Identify the Caregiver's needs based upon their personal situation (taking care of young child, spouse, parents...).
- Involve family, friends, professional counselors, medical personal, dietitians, physical fitness trainers, clergy.
- Educate: Utilize the vast amount of information that is available.
- Initiate the support – do not wait be asked.

November is National Giver Month



Education and Libraries Community Connection Initiative: Support High-Quality Early Learning Programs

What can clubs do?

- Be classroom and special event volunteers
- Plan a club project for a cleanup day
- Volunteer to do clerical work to relieve front office staff.
- Hold a library card sign-up for children in the program.
- Host a Scholastic Book Fair
- Celebrate the Week of the Young Child, held in April of each year.
- Celebrate Advocates for Children Week in October as well.



Arts and Culture Community Initiative: Outdoor Arts Murals

- Outdoor Art or Music Festivals
- Community Art Projects
- Develop ways to bring a little art into everyone's everyday lives (Drive By Art)
- Cultivate partnerships with schools and businesses to highlight local history & heritage with art programs
- Expand on a beloved theme in the community...a coastal community might use a funny pelican and have different businesses and organizations decorate to reflect their unique cause or company (this can also be used as a fund raiser)
- Combine with an environment chair to clean up a sad intersection and plant flowers and decorate a billboard to changeable art poster



GFWC
est. 1890
GENERAL FEDERATION
OF WOMEN'S CLUBS

“Amplify” Your Community

Service Projects (CSP)

for a

Greater Impact



Civic Engagement and Outreach Community Service Program



Vicky Ann Trimmer, Chairman
vtrimmer@daleyzucker.com
600 East Winding Hill Road
Mechanicsburg, PA 17055
717-877-9219



2024 – 2026 Community Initiative

“Preparation Saves Lives”

CPR & First Aid Training

AED Devices

Family Emergency Binders

- ❖ Citizenship
- ❖ Crime Prevention & Safety Awareness
- ❖ The Needy, Hungry, & Homeless
- ❖ Military Personnel & Veterans
- ❖ US Coast Guard Museum

Partners:

- ❖ Canine Companions
- ❖ Heifer International
- ❖ March of Dimes
- ❖ Operation Smile
- ❖ St. Jude Children's Research Hospital
- ❖ United Nations Foundation Shot@Life Campaign

Environment Community Service Program



Sharon Oliphant
Solip561@aol.com
871 NW 251st Drive
Newberry, FL 32669
727-424-3835



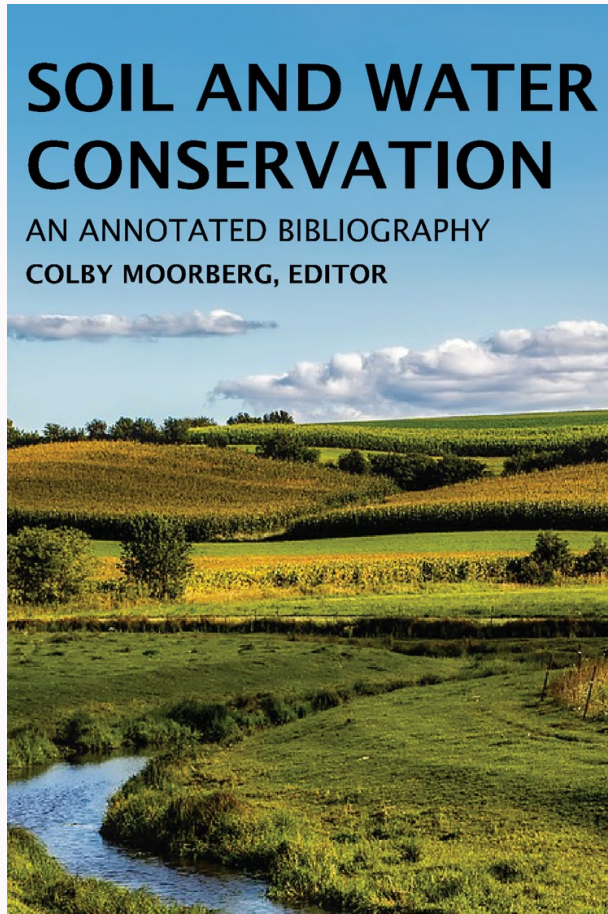
THINK....Lightbulb moment!



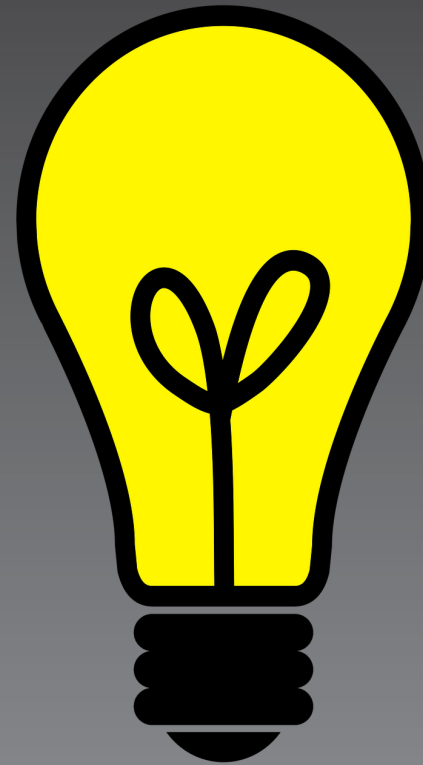
Protect Wildlife and Domesticated Animals



Preserve and Protect Resources



AMP it up....
TURN it up a NOTCH!





GFWC
est. 1890
GENERAL FEDERATION
OF WOMEN'S CLUBS

REMEMBER, be the light.
Together, we are caretakers
of the earth.



Sharon Oliphant, GFWC ENVIRONMENT CHAIRMAN

solip561@aol.com



Health and Wellness Community Service Program



Lynn Foreman
Lforeman.gfwc22@gmail.com
PO Box 647
Ennis, MT 59729
406-599-3120



Three components of Health and Wellness

- Disease Awareness and Prevention at an earlier age increases opportunity to live better longer
- Nutrition – best science indicates it is not so much what you eat, but how much that really matters
- Physical and Emotional Care



Health and Wellness

2024-2026 COMMUNITY CONNECTION INITIATIVE CAREGIVER'S CIRCLE

***“THE POWER OF COMMUNITY TO CREATE HEALTH IS FAR
GREATER THAN ANY PHYSICIAN, CLINIC OR HOSPITAL”***

Mark Hyman, M.D.



Health and Wellness

2024-2026 COMMUNITY CONNECTION INITIATIVE CAREGIVER'S CIRCLE

FACTS:

- **Unpaid family caregivers increased by 9.51 million between 2015-2020 to more than 53 million.**
- **Data applies to caregivers of all adults – including younger adults with physical or mental disabilities; 17 % Provide Care – 50.75% being women; 5.5 million military caregivers.**

Claire Samuels, Author Caregiving in 2023



Let's amp up our communities

What Clubs can do:

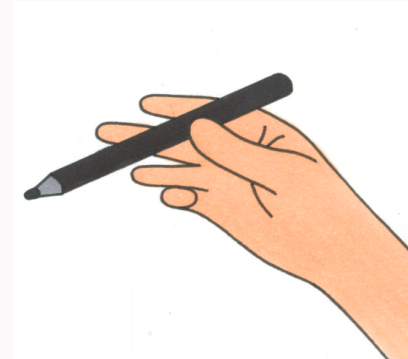
- Create Support Groups
- Enlist Help from professional counselors, dietitians, medical personal, fitness trainers
- Encourage caregivers to prioritize their own needs
- Offer specific ideas for what support could be given to help
- Be flexible – try to assist when THEY need you



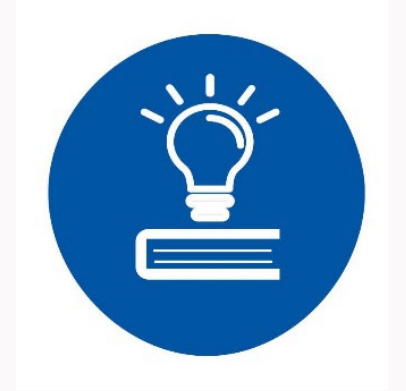
Let's amp up our Caregiver's Circles with YOUR



**Write 3
project ideas**



Education and Libraries Community Service Program



Dana Jones
Danajones64@yahoo.com
6585 Settlement Drive S
Indianapolis, IN 46250
219-201-4555



Continuing Priorities

- Equitable quality education
- STEM (Science, Technology, Engineering and Math)
- Public Libraries
- ESO (Epsilon Sigma Omicron)
- Education for children and adults



Community Connection Initiative

Support High-Quality Early Learning Programs



Ideas for your club

- Members can be classroom volunteers
- Special Event Volunteers
- Facility Volunteers
- Volunteer to do clerical work
- Library card sign-up for children in the program
- Host a Scholastic Book Fair
- Celebrate the Week of the Young Child, held in April of each year
- Celebrate Advocates for Children Week in October



PROJECT IDEAS

EDUCATION

- Establish a scholarship for a local student
- Advocate for and assist children and adults with special needs
- Support schools, educators, and students with donations
- Support STEM programs in schools and the community.
- Support first-year teachers by providing welcome messages and snacks for their teacher orientation.
- Host a special event on Teacher Appreciation Day



PROJECT IDEAS

LIBRARIES

- Support your local public library or school library.
- Offer volunteer assistance at the library.
- Organize and/or sponsor public service or community enrichment programs.
- Celebrate National Library Week and National Library Workers Day in April
- Establish a Little Free Library
- Organize a mobile book program



PROJECT IDEAS

ESO

- Establish an ESO reading group for study and discussion.
- Refer to the ESO Reading List on the GFWC website.
- Maintain a reading log, which is provided to the State ESO Chairman to achieve ESO levels.



Connect with Affiliates

Canine Companions

Heifer International

Operation Smile

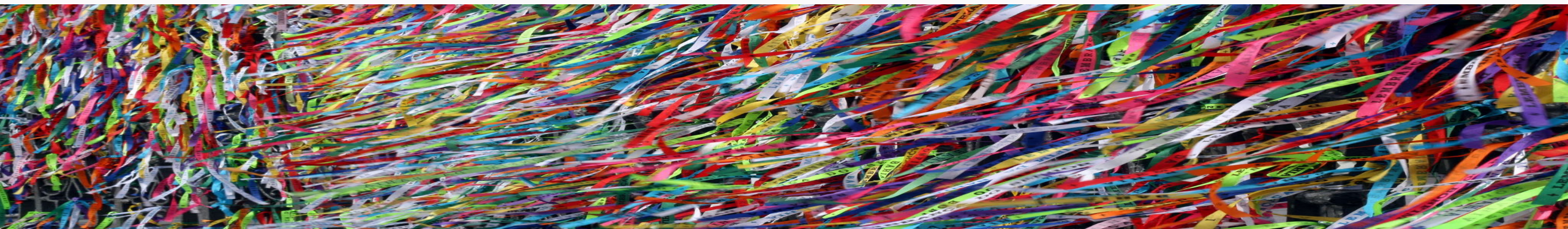
St. Jude Children's Research Hospital



Arts and Culture Community Service Program



Billie Williams
Bmwtfwc62@gmail.com
4620 McGuire Road
Liberty, TX 77575
409-781-5704



Arts & Culture

Community
Connection Initiative

“Bring Art Outside”

©JOHN BOLLWITT

COMMUNITY ART CAN ALSO BE CALLED “DRIVE BY ART”

- PAINTINGS ALONGSIDE A BUSY STREET
- THESE ARE UTILITY BOXES LOCATED THROUGHTOUT THE CITY. WITH THE CITIES PERMISSION AND ENCOURAGEMENT, COMMUNITY BUSINESS AND ORGANIZATIONS VOLUNTEER TO DECORATE THE BOXES
- THESE TINY DANCERS ARE DOWN THE STREET FROM A DANCE STUDIO....ALL FOUR SIDES ARE PAINTED WITH SWEET LITTLE DANCERS



**NOTHING
FANCY....
JUST FUN**

**A PAIR OF FUN
LOVING
DOLPHINS SWIM
AROUND AND
AROUND THIS
BOX**





COMMUNITY
ART CAN BE
Whimsical

GIANT FLOWERS
ON A
NEIGHBORHOOD
FENCE

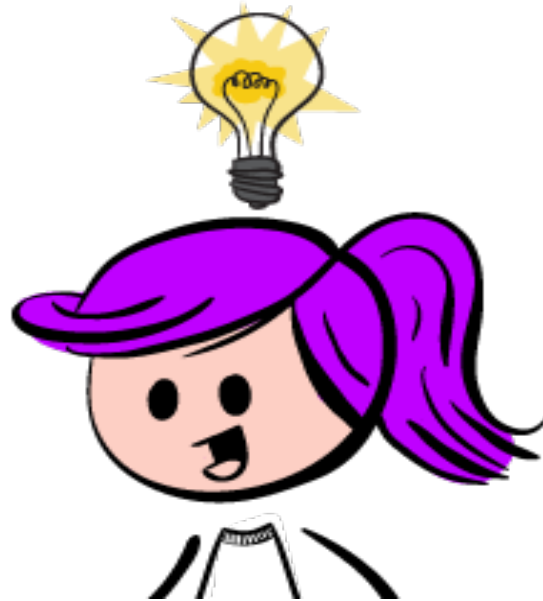
Always ask
permission



A BELOVED AMBASSADOR FOR A SEASIDE COMMUNITY SPONSORED BY BUSINESS AND LOCAL SERVICE ORGANIZATIONS

- THESE PELICANS CAN BE SCATTERED THROUGHOUT THE COMMUNITY
- SPONSORED BY CLUBS, BUSINESS AND INDIVIDUALS
- LISTED ON LOCAL MAPS
- USED AS A FUND RAISER
- EACH WITH THEIR OWN UNIQUE PERSONALITY

ART CSP PROGRAM ?



BIG IMPRESSIVE IMPORANT ART

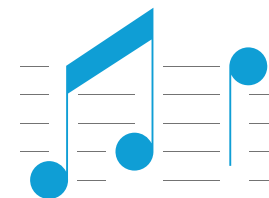


Sidewalk ART
is a great place
to start and
can be used
as a fund
raiser or kick
off event.





MUSIC FESTIVALS



COMMUNITY ART CLASSES ARE FOR EVERYONE



[This Photo](#) by Unknown Author is licensed under [CC BY-SA-NC](#)



ON THE SIDE OF A BUILDING

**WHEN PARTNERING WITH
A BUSINESS SOMETIMES
YOU CAN USE THEIR “TAG”
LINE TO YOUR
ADVANTAGE.....**

**GFWC CLUBS ARE ALWAYS
“GOOD NEIGHBORS”**



Art Defines Your



FROM BREATHTAKING

THIS LARGE MURAL
WAS PAINTED ON
THE SIDE OF A RICE
DRYER...IT IS HUGE,
NOTE THE
TELEPHONE POLE
ON THE RIGHT



TO EYE CATCHING

TODAY, TOMORROW.....

TO THE FUTURE....

**AND OTHER WORLDS TO
EXPLORE.....**

**JUST WAITING FOR A GFWC
CHAPTER TO OPEN ON THE MOON
OR MAYBE EVEN “MARS!”**



THIS TERM LET YOUR LIGHT SHINE ON



The background features a complex, abstract geometric pattern on the right side, composed of various colored shapes like squares, diamonds, and stylized floral motifs in shades of red, orange, yellow, green, and purple. The left side of the image has a soft, vertical gradient from light pink to white. The text is positioned in the lower right area, overlaid on the pattern.

BILLIE WILLIAMS

ARTS & CULTURE 2024-2026

Thank You For Attending

Vicky Ann, Sharon, Lynn,
Dana & Billie

2024 GFWC Convention Community Service Program Workshop Master Script

Slide 1:

Are you ready to get AMPED UP? We are the incoming GFWC Community Service Program Chairmen and we are energized, excited and ready to fill your head with some “light bulb” moments.

We all know it takes energy and electricity to promote ways in which community service programs help to create lasting community outcomes, spark interest, enlighten members and get you AMPed up with the strength of you, as we plug in to our upcoming initiatives, emphasis areas and honorary chairmen.

We need our clubs to AMP UP their projects to

help make an even bigger impact and get our clubs “known” – we do not want to be the best kept secret any longer! Collaborate with other community organizations, especially other women’s groups, the girl scouts, high school students, college students and adults living in continuing care communities. These are vast untapped resources. Make sure you are using your club’s name with GFWC prominently displayed. Use the information found in the Club Manual Communications and Public Relations section as a guide.

Slide 2:

I am Vicky Ann Trimmer and I will start off our Light Bulb Moments in the area of **Civic Engagement & Outreach**

Lights, Camera, Action - the spotlight is now on

“CIVIC ENGAGEMENT & OUTREACH”. This administration I am the head “lightbulb” but all GFWC clubwomen make up my “light bulb pack”.

Being civically engaged requires each GFWC member to work to make a difference in the life of “your” community. Each of our communities will have different needs, strengths, areas of weakness and public concerns. The one unifying factor - as “GFWC”, we can use our “light bulbs” to raise awareness, drive solution brainstorming, offer our time and help raise funds when needed.

Slide 3:

The 2024-2026 Community Initiative for Civic Engagement & Outreach is “PREPARATION SAVES LIVES”.

In an emergency - a victim's best chance of survival is having someone present who knows how to perform CPR and/or basic first aid skills. Many shooting and stab victims do not die from the initial wound - they die because no one applied pressure to stop the bleeding.

Slide 4:

GFWC Clubwomen can become the “lifesavers” of our community. We can take the time to learn to do CPR and how to use an AED device. More importantly, our Clubs can make sure there are opportunities for members of our communities to learn these lifesaving skills. How can your Club help?

- Host CPR and First Aid training classes

- Campaign and encourage parents, grandparents, aunts, uncles and friends to learn CPR
- Raise funds to provide AED devices for your local community
- Create your own “Family Emergency Binder”
- Circulate information to your community about the importance of having a “Family Emergency Binder” and how to create it - consider putting leaflets in checkout bags at a local store

Slide 5:

Citizenship is another bulb we need to illuminate. Good citizenship is not hard but seems to be getting lost today. Consider hosting a celebration for President’s Day,

Memorial Day, Independence Day, Veteran's Day, etc. Something as simple as asking a high school band member to play taps at a local cemetery at noon and inviting all your local community leaders involves little cost and is heartwarming.

Encouraging our community members to get out and vote is extremely important. One vote really can make a difference. Consider hosting a nonpartisan "Meet The Candidates" night. This can be really beneficial for the local elective offices.

Partner with a local veteran's organization to host a "Flag Retirement Ceremony"

Help potential new citizens study for the US Citizenship Test - I guarantee you will learn

something you did not know!

Crime Prevention and Safety Awareness are vital to the improvement of our local communities. Encourage your community members to report suspicious behavior. Support and “Thank” local police and first responders. Thank you is nice but the impact of paring a handwritten thank you note with a snack, beverage, gift card or other treat increased the impact. I guarantee your card will end up on their bulletin board.

Offer a “self-defense” course at your local senior center.

Homelessness is rampant in our communities. Homeless people come from all walks of life - they should not be stereotyped as the drug

addicts and alcohol abusers. Lost homes due to job loss, high interest rates, tight rental housing markets and many other factors have left thousands without a safe and decent place to live. While many do suffer from mental illness issues more likely the homeless person was impacted by a series of “bad luck” events.

GFWC clubwoman can work with local food banks to raise funds and collect food donations. Remember that they also need feminine hygiene products and toiletries. These are not “handouts” but “hand-ups”.

Our military supports us every day by working to ensure our freedom. Now it is our turn to say “thank you”

- Thank you for a job well done

- Thank you for the sacrifices your family has made so you could serve
- Thank you for accepting the physical , mental and health risks and injuries incurred while protecting us
- Thank you for putting on the uniform every day of your military service
- Thank you for being the brave ones who step forward when there is a crisis

Stay tuned for ideas on how to do this in upcoming newsletters from me.

We have the unique opportunity to support a new military museum. The US Coast Guard is the only military service that does not have its own museum. That is changing as we speak. The National Coast Guard Museum is being built in New London, CT near the US Coast Guard

Academy. Consider purchasing a paver from your community so it is recognized as supporting the Coast Guard in perpetuity.

Slide 6:

As you can see, I am very excited to get started as the Civic Engagement and Outreach chairman. Together we will throw the rays of light on our local communities and make them gleam. Remember to utilize the Partners as they are vast resource of information.

Slide 7:

Now, it's time to shine the light on the **Environment** led by Sharon Oliphant.

Good morning: I ask you today what is better than one lightbulb moment? I hope your answer is MANY! Together as chairmen of the

Community Service Programs, we are here to AMP you up! What does Environment have to do with lights, energy, excitement, education, empowerment and engagement? Everything-in just 5 short minutes I am going to share with you how to “Light Up My (your) Life” with the Environment. Now, if I could sing, I would, but I can’t so on we go. The words, sang by Debby Boone, “It can’t be wrong when it feels so right.”

Slide 8:

The National Park Service was created in 1916. Did you know that the General Federation of Women’s Clubs played a significant role in the establishment of the National Park Service? For decades women’s clubs have played a key role in the development, maintenance, and preservation of our national parks. The Department of the Interior was made

responsible for protecting the 35 National Parks and Monuments-and those yet to be established. Yellowstone was the first National Park dating back to 1872. The Harvey Girls were The Wild West's Original Waitresses –had true pioneers. These women hired thousands of women to serve in the adventures of the Grand Canyon. Mary Elizabeth Jane Colter; The Grand Canyon Architect, was a true renegade for her time with a strong vision. Florence Bascom, The National Parks first female geologist encouraged young girls to learn and study rocks. The National Parks of today are public resources for recreation, education, scholarship, and preservation of endangered landscapes, natural communities and species. The Community Initiative in the area of Environment for 2024-2026 is Our National and State Parks- ENGAGE IN NATURE. Many state parks and our

community parks are losing funding. Why? Because they have lost the SPARK needed to improve and repair our surroundings. As caretakers of our most precious resources, in this CSP area we are looking to help our parks. New signage, new water fountains, new benches, new recycle bins, and new life! In Florida, our clubwomen were caretakers of Royal Palm Park, we paid the Forest Ranger and raised money for Pennies for Pines. This park later became the Everglades. Did you know that Mesa Verde National Park in SW Colorado has a new superintendent, Kayci Cook Collins, hired in July 2021? A woman forest ranger...how awesome is that? We are looking to contact her to be a part of our Environment and Conservation Journey for 2024-2026. What history does your club in the local national park, state park or city park? If there isn't any,

we are asking you to AMP up a campaign to educate on the importance of our outdoors.

I hope you remember Smokey Bear. Did you know it is not Smokey THE Bear? In 1944 Smokey Bear became the symbol for the National Forest Services' Campaign. The motto of Only You Can Prevent Forest Fires is the longest running public service announcement in United States History. Now, when we talk about a SPARK in our area of Environment, remember we are looking for excitement, energy and education.... not the Wildfire Sparks.....

Slide 9:

Bees. Bees are essential for the health of people, and the planet. Honey and other products have medicinal properties and the role of a bee as a pollinator make them vital for food

supplies. Did you know that not all bees produce honey? Around 75% of our crops produce better yields if animals help them pollinate. Bees visit over 90% of the world's top 107 crops. How about we BEE the LIGHT? BEE Cause bees are very intelligent, we can help! Green backyards and gardens are vital. Educate your clubs about the habitats, importance and beauty as we BEE come keepers of our LIGHT! BEE EXCITED and AMP it up starting in your backyard.

BEE houses or Butterfly ponds are easy. Use cardboard tubes or reeds and a coffee mug and you are set. Bee hotels attract solitary bees. Be sure you seal the back of the tubes so the bees can get out. Butterfly ponds are shallow puddles with rocks, be sure to fill the puddle with sand or soil with the top of the rocks or sticks out of the water. The best place for this puddle is near a flower bed. As the water evaporates it leaves

behind valuable salts and mineral-you can also add one-part sugar, tablespoon with 9 parts of water. Or a tablespoon of Epson salt to 9 parts water.

Slide 10:

Here is a BRIGHT IDEA!! How about putting on your club shirt and walking along the river bank, the beach, or the lake and picking up trash?

Being mindful of who lives in those waters and what they need to sustain a life of being in the water. The dangers of water pollution -how water is filtered or the run off in to our water.

Advocate for change-support wetland conservation.

Slide 11:

Remember, when you shine your LIGHT, others will likely follow. When you saw us today with

our fabulous light bulb headbands and our flashlights, you certainly thought “I’d like to have one of those!” Well maybe you thought something else, but we hope today as you hear the new project areas and community initiatives you will come up with YOUR light bulb moments and use them to AMP up your club and community. We are like that 3- way light bulb. First, it’s getting started, pick a project-- second, its almost there, road map and plan in hand, and third, we are bright and ready to GO!

Slide 12:

AMP it up! Raising expectations, increasing the urgency and elevating intensity. Don’t wait for someone else to turn on the light, let us together be the EXCITEMENT and ENERGY needed for the General Federation of Women’s Clubs to SHINE BRIGHT together. Maybe we just need

bigger flashlights?

My information is on the screen and will be in the GFWC Manual.

Our Next BRIGHT LIGHT with her LIGHT BULB moments is Lynn with **Health and Wellness**.

Slide 13:

I am Lynn Foreman, and I began my journey in Health and Wellness as a “glimmer” at a young age, inspired by my father. Now, more than 50 years working in the ever-evolving world of Healthcare, I am fully “charged” and ready to work with you to enlighten and energize Club Women to make a difference in your Communities. You will note that the 2024-2026 Club Manual, Health and Wellness Guide, to be released July 2, 2024, has some updates; and

new project ideas have been integrated and there is a new Community Connection Initiative.

Slide 14:

We will continue to “spot light” the 3 components of Health and Wellness:

- Disease Awareness and Prevention at an earlier age increases opportunity to live better longer – light bulb project such as
 - Sponsor a forum with panel of experts
 - Provide – guide to available resources
- Nutrition – best science indicates it is not so much what you eat, but how much that really matters – light bulb projects such as
 - Create a club cookbook – include nutritional information
 - Sponsor a “disease” based focus group invite Medical & Nutritional experts – discuss the merits of “Fad Diets”

- Physical and Emotional Care: According to the Center for Disease control and Prevention the risk of heart disease and stroke, two leading causes of death in the US can be reduced with moderate intensity aerobic activity. Over 60 million women have some form of heart disease; and it is the leading cause of death of women of any age. Some light bulb ideas
 - Introduce some form of “exercise” movement into GFWC meetings
 - Form team(s) to participate in “walking, running, or cycling events – many of which are sponsored by not-for-profit fund raisers, or health insurance “Shape Up” challenges

Slide 15:

The 2022-2024 Health and Wellness Community Connection Initiative is “Caregiver’s Circle”

Many of my dear friends and family members have been Caregivers, and I personally was my late husband’s caregiver for the several years before he passed. I could have used a Caregiver Circle.

Slide 16:

FACTS:

- Unpaid family caregivers increased by 9.51 million between 2015-2020 to more than 53 million.
- Data applies to caregivers of all adults – including younger adults with physical or mental disabilities; 17 % Provide Care – 50.75% being women; 5.5 million military caregivers.

Slide 17:

What Clubs can do:

Create support groups for clubwomen, friends, and for the community. Enlist help from professional counselors, dietitians, medical personnel, and fitness trainers to present to the groups. Educate those wanting to assist caregivers on the best approaches.

Encourage caregivers to prioritize their own needs by providing the tools to do so. Offer specific ideas for what support could be given to help caregivers. Create a guide for caretaker resources available in the community, especially respite programs. Be flexible – try to assist when THEY need you – this could be one of what those assisting need to know.

Slide 18:

Let's Amp Up Our Caregiver's Circles with your

ideas. Please write down 3 ideas for projects on the paper at your table. I will collect them and email the list you.

Now, it's time to shine the light on the **Education and Libraries** led by Dana Jones.

Slide 19:

Education and Libraries have long been a priority for GFWC clubwomen. The topics have evolved through the years, but it is still as important today as it was when it first began. But how can you amp up your commitment to Education and Libraries?

Slide 20:

Some of the continuing priorities for Education and Libraries for the new administration are:

- Equitable quality education

- STEM (Science, Technology, Engineering and Math)
- Public Libraries
- ESO (Epsilon Sigma Omicron)
- Education for children and adults

How each club completes projects for any of these areas is of course up to the club for the benefit of their community. Is your club in a rut and completing the same projects each year – how can you shine a new light on this project? How can your club amp it up to gain more attention this next year?

Slide 21:

The 2024-26 administration Community Connection Initiative for Education and Libraries will be to Support High-Quality Early Learning Programs.

There is ample research that shows the benefits of high-quality early learning opportunities for children.

- An early learning program overlaps with a child's development of gross and fine motor skills, and their understanding of healthy skills like handwashing, regular exercise, and balanced eating.
- High-quality early learning programs can increase earning potential and encourage and support educational attainment.
- Early childhood development and education programs can also help reduce educational gaps.
- Early childhood education has the potential to mitigate the high costs of special education, dropouts, and other poor educational outcomes.

Slide 22:

Completing projects in this initiative would be welcomed by the early learning programs in every community. On this slide, I've listed just a few ways your clubs can join this initiative.

Slide 23:

Delving into the Education part of this Community Service Program, I've listed some ideas your club can initiate or continue in your community.

Slide 24:

For the Libraries part of this CSP, we know there will always be a focus on libraries in our community. If your community is not fortunate enough to have a library –one valiant project would be to start a Little Free Library – what a terrific way to share books with your community

while clearing off your overstuffed bookshelves! Consider placing them in a neighborhood or an area that has minimal or no access to public libraries. Think about a laundromat where parents often take their children and focus on some children's books for use while they're completing this household chore. Sound like a bit of work? Consider AMPING UP the project by partnering with the Scouts or High School students to help build and/or stock the libraries. What a bright light that would be for your community!

Slide 25:

Does your state federation have an active ESO charter? ESO is sometimes referred to as a book club. It was started in Indiana – a fact that I am very proud of. If your club does not have an ESO chairman, perhaps you can work directly

with your State ESO Chairman. If you're unsure about this, inquire with your state president as they will know who this person is – or maybe your state ESO needs to be invigorated.

Consider charging it up with some new energy.

It's not hard to do. Consider a statewide book club with meetings at BOD and Conventions and/or virtually. There is an ESO Handbook located in Resources in the Member Portal – you can just search ESO, and it will come up.

I have one printed copy with me if you'd like to take a quick look after the workshop.

GFWC also has a Reading List with books from 30 categories to choose from. If your state has a list and a process – that supersedes the GFWC list and procedures. Your state has likely adapted it to work for them and that is perfectly fine.

Slide 26:

We have identified four affiliates that Education and Libraries pairs well.

They are:

- Canine Companions
- Heifer International
- Operation Smile
- St. Jude's Children's Research Hospital.

Check those out for ideas of how your club can complete projects for Education and Libraries while partnering with these organizations. Never partnered with an affiliate before – this would be an exciting charge to amp up your project.

If you have any questions, my contact information is in the Club Manuel as well.

Now, it's time to shine the light on the **Arts and Culture** led by Billie Williams.

Slide 27:

Start by singing: “This Little Light of Mine....”

(Get everyone clapping and up out of their chairs for a minute or two.....)

I am Billie Williams and now that you have lifted up your voices in joyous song, let's see what our little lights are shining on in the ARTS & CULTURE CSP.

ART should shine brightly in our neighborhoods and communities and what better way to free art from the confines of a museum or an indoor venue, than to bring it outside and slap it on the side of a building, a fence or any other convenient object.

Slide 28:

To that end, the emphasis for this term in the Arts & Culture CSP is to develop ***“bright”*** ideas about community art projects, specifically, **“Outdoor Art Murals”**.

Slides 29, 30, 31, 32, 33, 34, 35, 36, 37, 38, 39, 40, 41:

(Will be scrolled thru as presentation is made)

Art should be illuminating to everyone, not just a select few who have the time to visit galleries or museums. Art should be allowed to “roam free” as it were to “brighten” everyone’s day, and what better way to accomplish this than community murals.

Art that can highlight the history and culture of a neighborhood, district or the entire city is ART

that can be enjoyed by all.

Some might call this “Fast Food Art” and maybe it is as you can access it from behind the steering wheel of a car, but “Fast Food” can be nourishing and so can easily accessible art.

Outdoor art can be funny, informative and whimsical. It can be educational, revealing, enlightening, and can illustrate the temper of the surrounding neighborhood, so one could get a feel for the culture of the people who live there, just by driving by.

When you develop your clubs outlines this term under the arts & culture think outside the box.....I mean, “*REALLY*” outside the box.
Think:

- Outdoor Art or Music Festivals
- Community Art Projects
- Develop ways to bring a little art into everyone's everyday lives (Drive By Art)
- Cultivate partnerships with schools and businesses to highlight local history & heritage with art programs
- Expand on a beloved theme in the community...a coastal community might use a funny pelican and have different businesses and organizations decorate to reflect their unique cause or company (this can also be used as a fund raiser)

- Combine with an environment chair to clean up a sad intersection and plant flowers and decorate a billboard to changeable art posters
- Start small and work your way up to something grand

Slide 42:

So, this term let's work together to combine "*Our Little Lights*" and "*Let them Shine, Let them Shine.....Let them Shine!!!!*"

Slide 43:

I am Billie Williams.

Slide 44:

CONCLUSION

Wow! You can see that without each of you and your members, there is no spark, no energy, no “umf” to your projects and programs. Each of you can get plugged in and light up in ways that were just shared. Together, we are brighter, shine better, and will AMP up our communities with the help of your electricity and energy.

(WE SHINE OUR FLASHLIGHTS)

We need each of YOU to GET AMPED up, shine bright, place the focus on the spotlight on our GFWC efforts to be recognized and HIGH LIGHT our GFWC the Volunteer Sprit.

As you leave please pick up your parting gifts of “Light” and “stickers”.

Enjoy the rest of convention!