



**Common Land Unit**  
  Tract Boundary  
  PLSS  
  Non-Cropland  
  Cropland

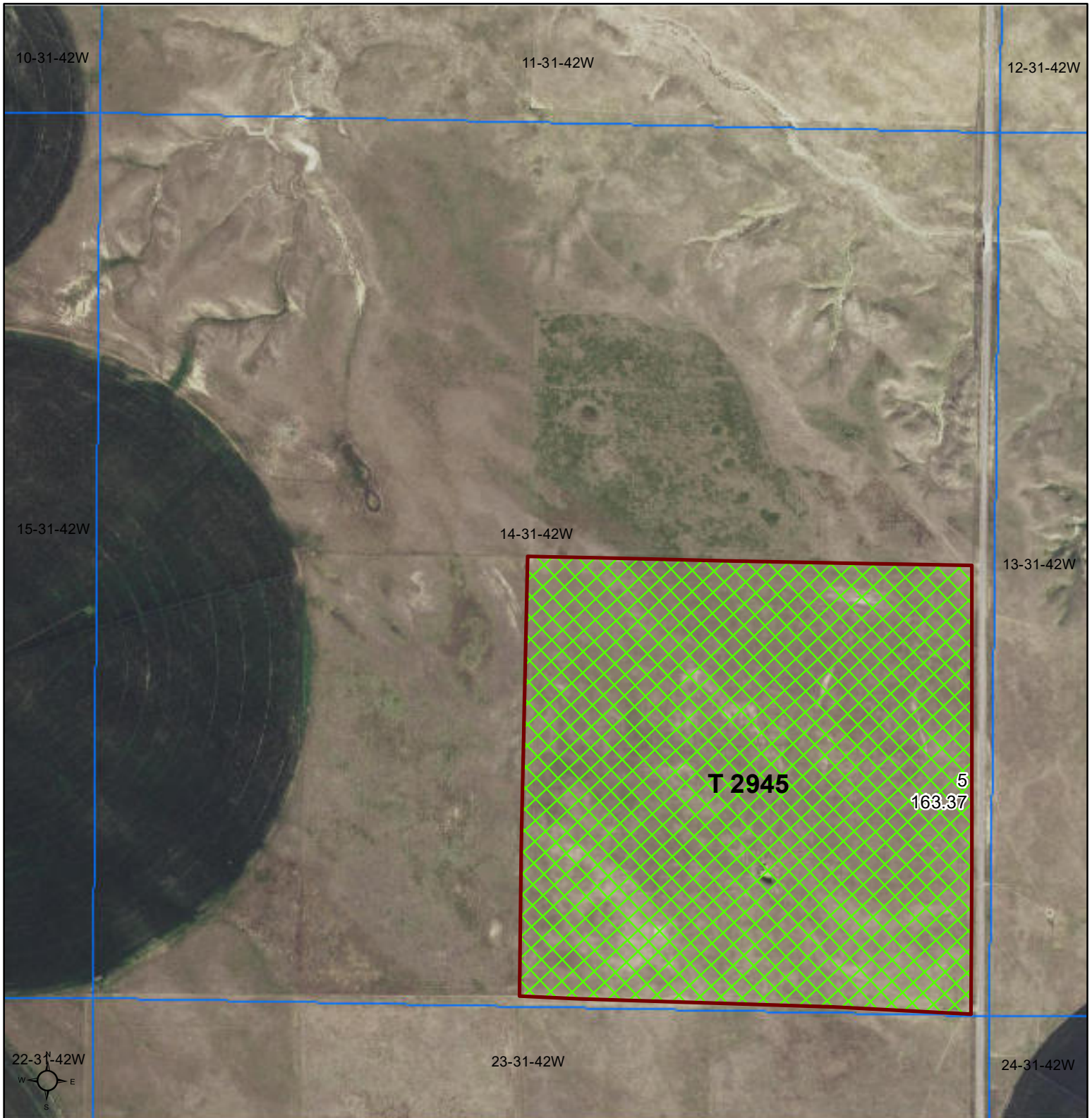
2016 NAIP Ortho Imagery

2018 Program Year  
 Map Created August 29, 2018

**Wetland Determination**  
● Restricted Use  
▼ Limited Restrictions  
■ Exempt from Wetland Provisions

**1-31-42W**

United States Department of Agriculture (USDA) Farm Service Agency (FSA) maps are for FSA Program administration only. This map does not represent a legal survey or reflect actual ownership; rather it depicts the information provided directly from the producer and/or National Agricultural Imagery Program (NAIP) imagery. The producer accepts the data 'as is' and assumes all risks associated with its use. USDA-FSA assumes no responsibility for actual or consequential damage incurred as a result of any user's reliance on this data outside FSA Programs. Wetland identifiers do not represent the size, shape, or specific determination of the area. Refer to your original determination (CPA-026 and attached maps) for exact boundaries and determinations or contact USDA Natural Resources Conservation Service (NRCS).



Common Land Unit   PLSS

- Non-Cropland
- Tract Boundary

**Wetland Determination**

- Restricted Use
- ▼ Limited Restrictions
- Exempt from Wetland Provisions

2016 NAIP Ortho Imagery

2018 Program Year

Map Created August 29, 2018

**14-31-42W**

United States Department of Agriculture (USDA) Farm Service Agency (FSA) maps are for FSA Program administration only. This map does not represent a legal survey or reflect actual ownership; rather it depicts the information provided directly from the producer and/or National Agricultural Imagery Program (NAIP) imagery. The producer accepts the data 'as is' and assumes all risks associated with its use. USDA-FSA assumes no responsibility for actual or consequential damage incurred as a result of any user's reliance on this data outside FSA Programs. Wetland identifiers do not represent the size, shape, or specific determination of the area. Refer to your original determination (CPA-026 and attached maps) for exact boundaries and determinations or contact USDA Natural Resources Conservation Service (NRCS).