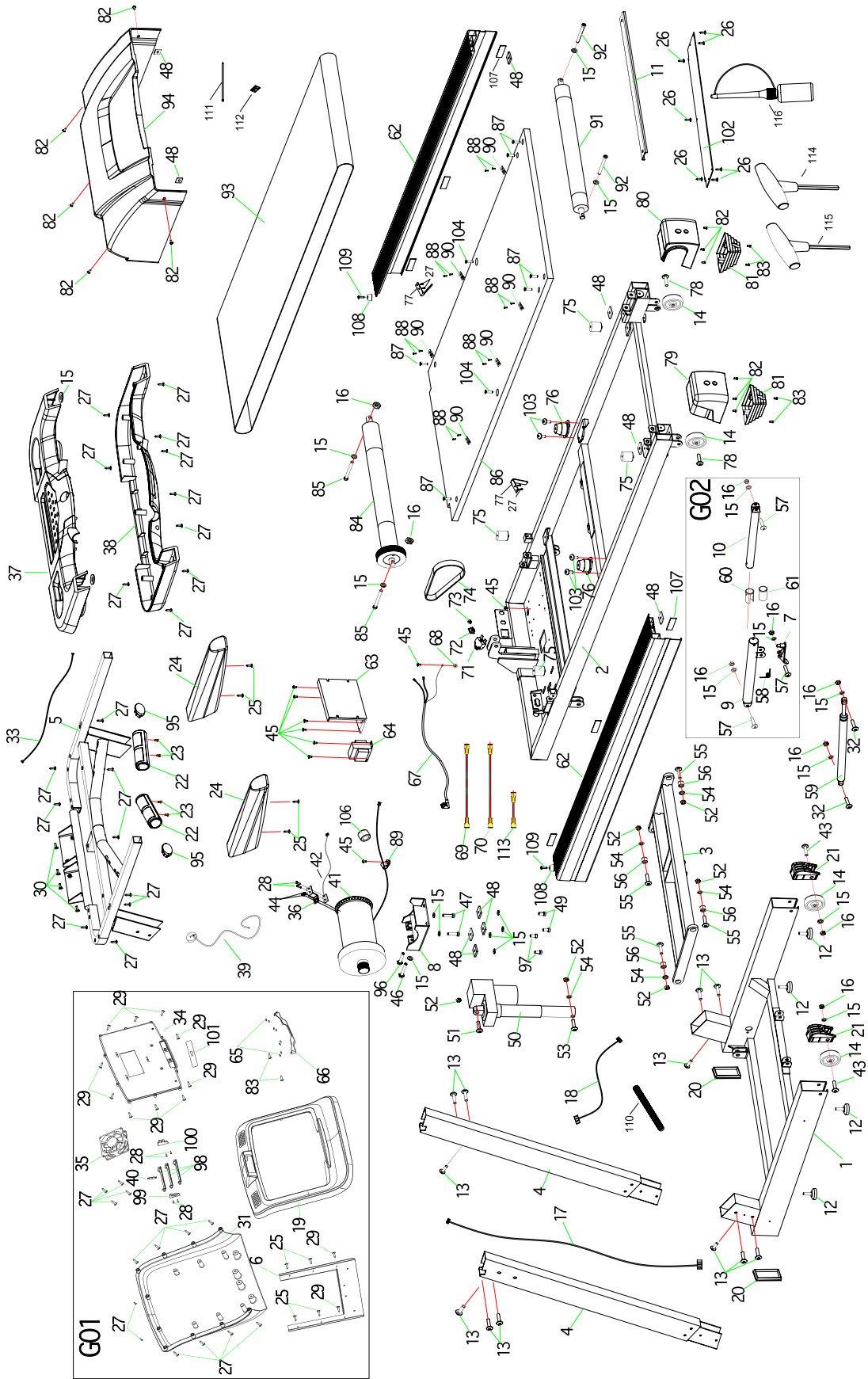


EXPLODED VIEW DRAWING



PARTS LIST

To order replacement parts: provide your customer service representative with the product model number and the part number located on the Parts List below, along with the quantity you require.

No.	Description	Qty
S5Ti-1	Base frame	1
S5Ti-2	Main frame	1
S5Ti-3	Incline frame	1
S5Ti-4	Upright post (L & R)	2
S5Ti-5	Computer frame	1
S5Ti-6	Console bracket	1
S5Ti-7	Foot pedal release	1
S5Ti-8	Motor base frame	1
S5Ti-9	External extension tube frame	1
S5Ti-10	Internal extension tube frame	1
S5Ti-12	Adjustable foot	4
S5Ti-13	Allen C.K.S. full thread screw M8*15	12
S5Ti-14	Transportation wheel	4
S5Ti-15	Flat washer (Φ8)	22
S5Ti-16	Self-fixing bolt M8	9
S5Ti-17	Main cable L-1200	1
S5Ti-18	Controller cable L-800	1
S5Ti-19	Console housing (front)	1
S5Ti-20	End cap (front)	2
S5Ti-21	End cap (rear)	2
S5Ti-22	Handle pulse grip	2
S5Ti-23	Phillips C.K.S. self-tapping screw ST3*25	4
S5Ti-24	Foam grip (left, right)	2
S5Ti-25	Phillips C.K.S. self-tapping screw ST4*20	8
S5Ti-27	Phillips C.K.S. self-tapping screw ST4*16	46
S5Ti-28	Phillips self-tapping screw ST3*10	6
S5Ti-29	Phillips C.K.S. steel self-tapping screw ST4*12	12
S5Ti-30	Allen socket full thread screw M6*25	4
S5Ti-31	Console housing (rear)	1
S5Ti-32	Allen C.K.S. half thread screw M8*30	2
S5Ti-33	Cable L-700	1
S5Ti-34	Console board (PCB)	1
S5Ti-35	Fan	1
S5Ti-36	Sensor bracket	1
S5Ti-37	Console tray (upper) with keyboard	1
S5Ti-38	Console tray (lower)	1
S5Ti-39	Safety key	1
S5Ti-40	Clinker	1
S5Ti-41	Motor	1
S5Ti-42	Speed sensor	1
No.	Description	Qty

No.	Description	Qty
S5Ti-60	Plastic bushing	1
S5Ti-61	Plastic bushing	1
S5Ti-62	Side rail	2
S5Ti-63	Lower control board	1
S5Ti-64	Transformer	1
S5Ti-65	Plastic strips	8
S5Ti-66	Ipad tray	1
S5Ti-67	Power cord	1
S5Ti-68	Washer Φ5	1
S5Ti-69	Wire (red)	1
S5Ti-70	Wire (black)	1
S5Ti-71	Breaker switch	1
S5Ti-72	Power switch	1
S5Ti-73	Cable ring	1
S5Ti-74	Motor belt	1
S5Ti-75	Shock absorber Φ30×M6	4
S5Ti-76	Cushion with holder	2
S5Ti-77	Hex bolt	4
S5Ti-78	Allen C.K.S. half thread screw M8*35*20	2
S5Ti-79	End cap (Left)	1
S5Ti-80	End cap (Right)	1
S5Ti-81	Foot pad	2
S5Ti-82	Phillips C.K.S. full thread screw M5*10	11
S5Ti-83	Phillips C.K.S. full thread screw M5*15	6
S5Ti-84	Front roller	1
S5Ti-85	Allen socket head half thread screw M8*65	2
S5Ti-86	Running deck	1
S5Ti-87	Allen countersunk full thread screw M6×30	6
S5Ti-88	Phillips countersunk self tapping screw	2
S5Ti-89	Cable guide	2
S5Ti-90	Side rail guide	6
S5Ti-91	Rear roller	1
S5Ti-92	Allen screw M8*75	2
S5Ti-93	Running belt	1
S5Ti-94	Motor cover	1
S5Ti-95	End cap Φ32	2
S5Ti-96	Allen socket head full thread screw M8*40	1
S5Ti-97	Allen C.K.S. full thread screw M8*20	2
S5Ti-98	Fan plate	3
S5Ti-99	Bracket (left)	1
No.	Description	Qty

PARTS LIST CONTINUED

S5Ti-43	Allen C.K.S. half thread bolt M8*50	2
S5Ti-44	Phillips C.K.S. self-tapping screw	2
S5Ti-45	Phillips C.K.S. full thread screw M4*10	11
S5Ti-46	Allen socket full thread screw M8*50	1
S5Ti-47	Allen socket full thread screw M8*35	2
S5Ti-48	Square cushion	9
S5Ti-49	Hex full thread bolt M8*20	2
S5Ti-50	Incline motor	1
S5Ti-51	Allen C.K.S. half thread bolt M10*45	1
S5Ti-52	Hex self-locking nut M10	6
S5Ti-53	Allen C.K.S. half thread screw M10*65	1
S5Ti-54	Flat washer Φ 10	5
S5Ti-55	Allen C.K.S. half thread screw M10*55	4
S5Ti-56	Metal spacer	4
S5Ti-57	Allen C.K.S. half thread screw M8*40	3
S5Ti-58	Spring	1
S5Ti-59	Hydraulic	1

S5Ti-100	Bracket (right)	1
S5Ti-101	MP3 socket cover	1
S5Ti-102	Back cover	1
S5Ti-103	Phillips self tapping screw	12
S5Ti-104	Belt guide	2
S5Ti-106	Choke Φ 35 \times Φ 22 \times t15.0	1
S5Ti-107	Adhesive	6
S5Ti-108	Spacer	2
S5Ti-109	Phillips C.K.S. self-tapping screw ST4*30	2
S5Ti-110	Wire protector Φ 20 \times 420	1
S5Ti-111	Binder 3*100	4
S5Ti-112	Binder 1/4	1
S5Ti-113	Wire (red)	1
S5Ti-114	T wrench 6 mm	1
S5Ti-115	T wrench 5 mm	1
S5Ti-116	Lubricant	1