

PART LIST—Model No. 831.28643.0

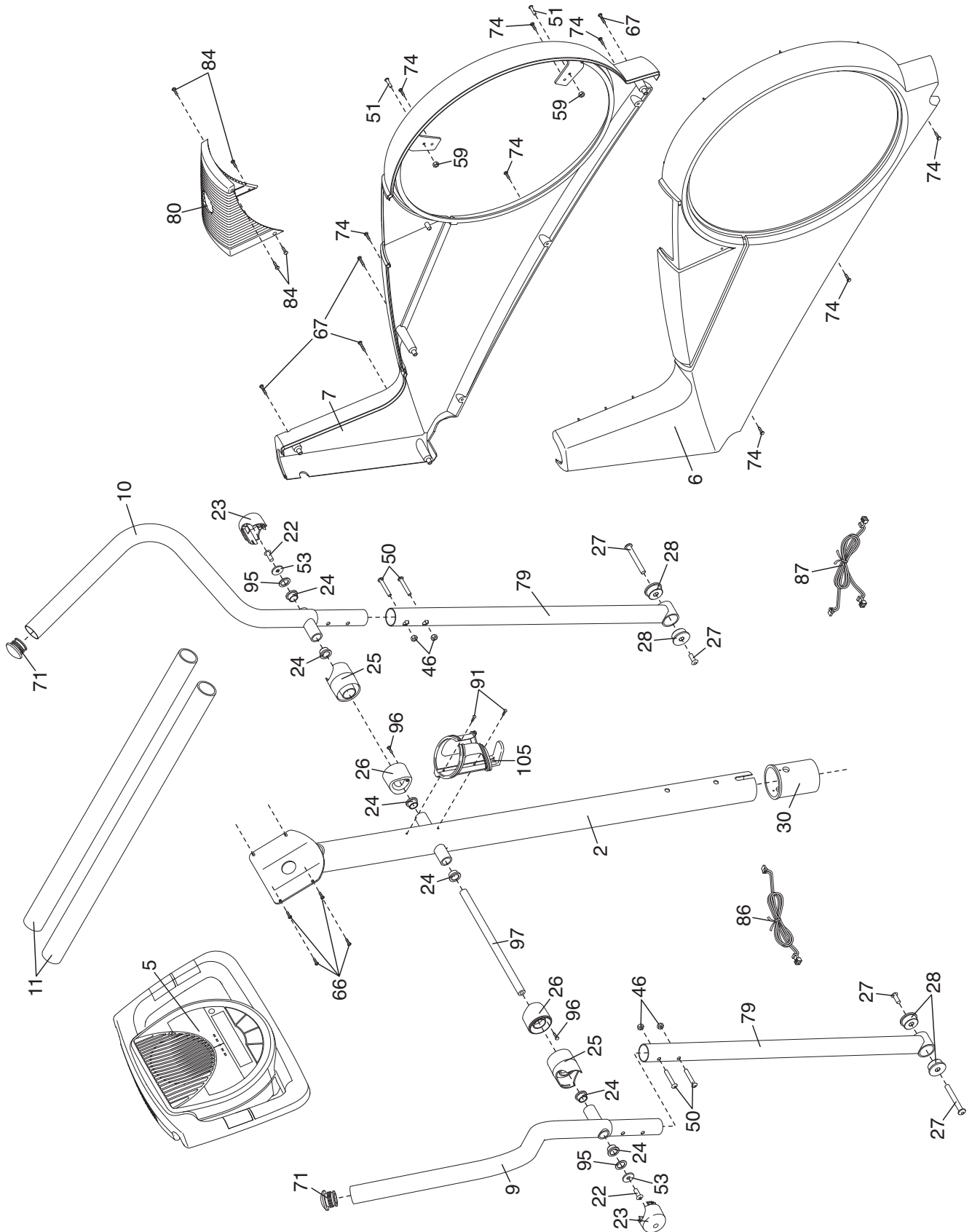
R0406A

Key No.	Qty.	Description	Key No.	Qty.	Description
1	1	Frame	55	1	Motor
2	1	Upright	56	1	Belt
3	1	Front Stabilizer	57	2	Hub
4	1	Rear Stabilizer	58	4	Hub Spacer
5	1	Console	59	4	M6 Nylon Locknut
6	1	Left Side Shield	60	4	M6 Nut
7	1	Right Side Shield	61	4	M5 Nylon Locknut
8	2	Pedal Disc	62	4	M5 x 12mm Bolt
9	1	Left Handlebar	63	2	M10 x 88mm Button Screw
10	1	Right Handlebar	64	2	M4 x 6mm Self-tapping Screw
11	2	Foam Grip	65	2	Adjustment Bracket Screw
12	1	Right Pedal	66	6	M4 x 16mm Screw
13	1	Left Pedal	67	4	M4 x 25mm Screw
14	1	Left Pedal Arm	68	1	Right Front Endcap
15	2	Pin Spacer	69	1	Reed Switch Clamp
16	2	Pedal Bracket	70	2	M10 Split Washer
17	2	Adjustment Pin	71	2	Handlebar Endcap
18	4	Pedal Arm Bushing	72	2	Leveling Foot
19	2	Adjustment Spring	73	1	M5 x 16mm Screw
20	2	Adjustment Bracket	74	8	M4 x 19mm Screw
21	2	Snap Ring	75	2	M6 Eyebolt
22	2	M8 x 25mm Patch Screw	76	1	Resistance Spring
23	2	Handlebar Cap	77	1	Reed Switch
24	6	Handlebar Bushing	78	1	Reed Switch Bracket
25	2	Handlebar Spacer	79	2	Handlebar Leg
26	2	Upright Spacer	80	1	Side Shield Cover
27	2	M10 x 52mm Bolt Set	81	1	“U” Bracket
28	4	Leg Bushing	82	8	Cover Screw
29	4	M10 Nylon Locknut	83	2	Frame Spacer
30	1	Upright Bushing	84	4	M4 x 12mm Round Head Screw
31	1	Left Front Endcap	85	1	Resistance Cable
32	2	Wheel	86	1	Upper Wire Harness
33	2	M6 x 72mm Button Screw	87	1	Lower Wire Harness
34	4	M10 x 112mm Carriage Bolt	88	2	Pedal Arm Sleeve
35	2	Rear Stabilizer Endcap	89	4	M8 x 50mm Button Screw
36	1	Left Crank Arm	90	4	Motor Washer
37	1	Pulley	91	2	M4 x 22mm Screw
38	1	Right Crank Arm	92	2	Inner Pedal Arm Sleeve
39	1	Crank	93	3	M6 Washer
40	2	Crank Bearing	94	4	Large Snap Ring
41	1	Flywheel	95	2	Wave Washer
42	2	Flywheel Bearing	96	2	M3 x 16mm Screw
43	1	Magnet	97	1	Pivot Axle
44	1	Flywheel Axle	98	8	M8 Jam Nut
45	2	Adjustment Knob	99	4	M8 x 65mm Button Screw
46	11	M8 Nylon Locknut	100	4	M8 Split Washer
47	2	Crank Screw	101	4	M8 x 45mm Button Screw
48	2	Hub Cover	102	2	Pin Collar
49	1	M6 x 25mm Bolt	103	1	Right Pedal Arm
50	4	M8 x 45mm Button Bolt	104	2	M8 Washer
51	4	M6 x 18mm Button Bolt	105	1	Water Bottle Holder
52	1	“C” Magnet Bracket	#	2	Hex Key
53	10	M8 Large Washer	#	1	Grease
54	1	“C” Magnet	#	1	User’s Manual

Note: “#” indicates a non-illustrated part. Specifications are subject to change without notice. **If a part is missing, call toll-free 1-888-533-1333.** See the back cover of this manual for information about replacement parts.

EXPLODED DRAWING A—Model No. 831.28643.0

R0406A



EXPLODED DRAWING B—Model No. 831.28643.0

R0406A

