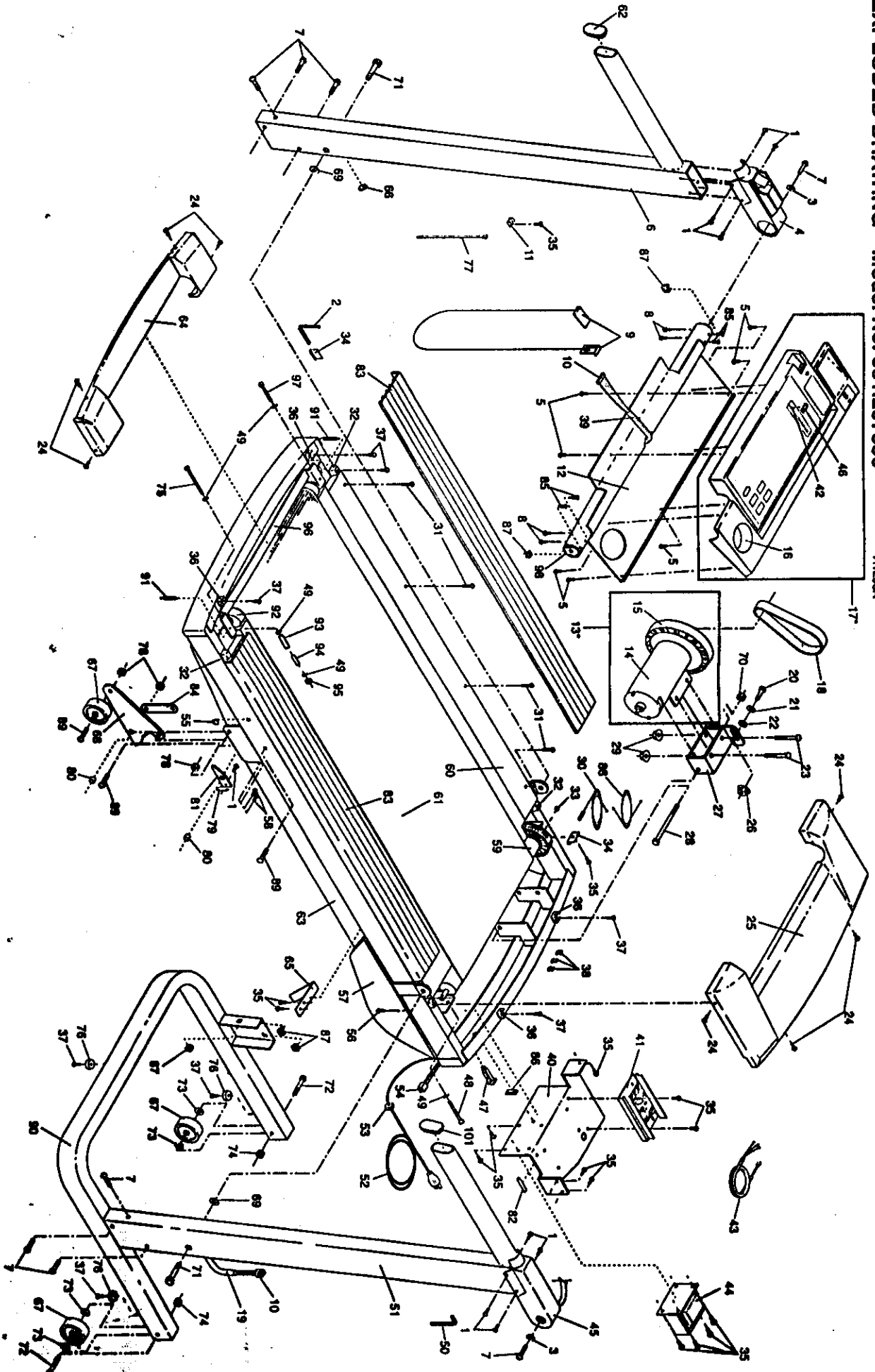


EXPLODED DRAWING—Model No. 831.297530

R1295A



MODEL NUMBER: 29753
VERSION: 00
PRODUCT NAME: LIFESTYLER SM1100
PRODUCT DESC:

MODEL/PART BOOK LISTING

PAGE 1

INI023P1

RUN DATE: 4/16/97

RUN TIME: 18:45:40

KEY NUMBER	PART NUMBER	DESCRIPTION	QUANTITY
.	.	LIFESTYLER SM1100	0
1	130459	CONSOLE BRACKET SCREW	10
2	126040	3/16"ALLEN WRENCH	1
3	014086	CROSSBAR WASHER	2
4	127091	LEFT CROSSBAR BRACKET	1
5	013540	CONSOLE SCREW	8
6	128206	LEFT UPRIGHT	1
7	013438	CROSSBAR/UPRIGHT BOLT	8
8	013141	CROSSBAR SCREW	4
9	119038	SAFETY KEY/CLIP	1
10	124544	UPRIGHT WIRE HARNESS	1
11	116927	TIE HOLDER CLAMP	1
12	130854	CROSSBAR W/HARDWARE	1
13	129668	MOTOR/PULLEY/FLYWHEEL/FAN	1
14	129667	MOTOR	1
15	112825	PULLEY/FLYWHEEL/FAN	1
16	128119	WATER BOTTLE HOLDER INSRT	1
17	128116	CONSOLE	1
18	126134	MOTOR BELT	1
19	128265	CABLE LOOM UPRIGHT	1
20	013547	MOTOR TENSION BOLT	1
21	122812	MOTOR TENSION WASHER	1
22	014117	STAR WASHER	3
23	123385	MOTOR BOLT	2
24	.	SEE KEY #56	0
.	.	KEY #24 WAS HOOD SCREW	0
25	129209	FRONT HOOD	1
26	120867	MOTOR TENSION NUT	1
27	122632	MOTOR MOUNT BRACKET	1
28	107503	MOTOR SWIVEL BOLT	1
29	105477	MOTOR NUT	2
30	129438	REED SWITCH/SENSOR WIRE	1
31	100691	PLATFORM SCREW	8
32	125802	RUBBER HOOD ANCHOR	1
33	100498	MAGNET	1
34	016028	ADHESIVE CLIP	2
35	120630	SCREW	13
36	127419	HOOD ANCHOR	4
37	013300	SMALL SCREW	12
38	054023	WIRE CLIP	3
39	123752	24"CABLE LOOM	1
40	126985	ELECTRONICS BRACKET	1
41	129843	CONTROLLER	1
42	128125	POTENTIOMETER	1
43	124545	MOTOR-CONTROLLER WIRE	1
44	109365	CHOKE	1
45	126641	RIGHT CROSSBAR BRACKET	1
46	128115	SPEED KNOB	1
47	109382	CIRCUIT BREAKER	1
48	112609	FRONT ROLLER ADJ BOLT	1
49	014127	ADJUSTMENT WASHER	5
50	045017	7/32" ALLEN WRENCH	1
51	128210	RIGHT UPRIGHT	1
52	124669	POWER CORD	1

MODEL NUMBER: 29753
 VERSION: 00
 PRODUCT NAME: LIFESTYLER SM1100
 PRODUCT DESC:

MODEL/PART BOOK LISTING

PAGE 2
 INI023P1
 RUN DATE: 4/16/97
 RUN TIME: 18:45:40

KEY NUMBER	PART NUMBER	DESCRIPTION	QUANTITY
53	124695	GROMMET	1
54	.	NOT USED SEE KEY #10	0
.	.	KEY 54 WAS A SAFETY COVER	0
.	.	WIRE HARNESS	0
55	.	NOT USED	0
.	.	KEY 55 WAS A FRAME PLUG	0
56	129168	SAFETY COVER SCREW	30
57	131610	SAFETY COVER	1
58	108080	RATCHET SCREW	4
59	129975	FRONT ROLLER PULLEY	1
60	127698	WALKING BOARD W/FASTENERS	1
61	124145	WALKING BELT W/FASTENERS	1
62	128257	HANDRAIL ENDCAP	2
63	NSP	FRAME	1
64	125758	REAR HOOD	1
65	127098	BELT GUIDE	2
66	126960	UPRIGHT PLUG	1
67	052012	WHEEL	4
68	128875	INCLINE LEG	2
69	118570	UPRIGHT PIVOT WASHER	2
70	012149	MOTOR PIVOT NUT	3
71	126635	UPRIGHT PIVOT NUT	2
72	117806	FRONT WHEEL BOLT	2
73	112628	WHEEL SPACER	4
74	012056	FRONT WHEEL NUT	2
75	128260	RT REAR ROLLER ADJ. BOLT	1
76	126650	UPRIGHT FOOT	3
77	016057	8" CABLE TIE	1
78	119425	INCLINE LEG NUT	4
79	120655	INCLINE LEG SPRING	2
80	128271	INCLINE LEG SPACER	4
81	128416	INCLINE LEG LATCH	2
82	120885	WIRE GUARD	1
83	127700	FOOT RAIL W/FASTENER	2
84	128575	INCLINE LEG BRACKET	2
85	013540	CROSSBAR BRACKET SCREW	12
86	126130	HOLE PLUG	1
87	111869	CAGE NUT	8
88	118196	REED SWTCH EXTENSION WIRE	1
89	013544	INCLINE LEG BOLT	2
90	128247	BASE	1
91	127544	GUARD SPRING	2
92	127009	REAR ROLLER	1
93	128986	RR ROLLER TENSION SPRING	1
94	123470	SPRING SLEEVE	1
95	119439	ROLLER TENSION NUT	1
96	129530	REAR ROLLER GUARD	1
97	105444	LT REAR ROLLER ADJ. BOLT	1
98	128465	CROSSBAR BRACKET	2
101	.	SEE #62	0
.	.	NON-ILLUSTRATED PARTS	0
#	131090	REED SWITCH WIRE CLAMP	1
#	130249	LT CONSOLE BRACKET LATCH	1
#	127711	LATCH WARNING DECAL	1

MODEL NUMBER: 29753
 VERSION: 00
 PRODUCT NAME: LIFESTYLER SM1100
 PRODUCT DESC:

MODEL/PART BOOK LISTING

INI023P1

RUN DATE: 4/16/97
 RUN TIME: 18:45:40

KEY NUMBER	PART NUMBER	DESCRIPTION	QUANTITY
#	124803	CONSOLE WARNING DECAL	1
#	129428	REED SWITCH JUMPER WIRE	1
#	129004	SAFETY COVER GROMMET	1
#	117992	SAFETY COVER PLUG	1
#	127860	FASTENER	12
#	127548	TECH SHEET	1
#	123945	TECH SHEET ENVELOPE	1
#	107771	8"WHITE WIRE,M/F	1
#	.	NOT USED,26" GROUND WIRE	1
#	.	NOT USED,70" GROUND WIRE	1
#	.	NOTE: IF SCREW IS NEEDED	0
#	.	TO ATTACH EITHER ABOVE	0
#	013162	GROUND WIRES SEND 013162.	0
#	129859	100" GREEN GROUND WIRE	1
#	100553	UPRIGHT PIVOT NUT	2
#	128700	BATTERY COVER	1
#	NLA	BATTERIES	3
#	127550	USERS MANUAL	1
#	127549	LITERATURE PACKET	1
.	127550	USER'S MANUAL	1
.	126842	HARDWARE KIT	1
.	013141	1/2" SCREW	1
.	016028	WRENCH CLIP	1
.	126040	3/16" WRENCH	1
.	045017	7/32" WRENCH	1