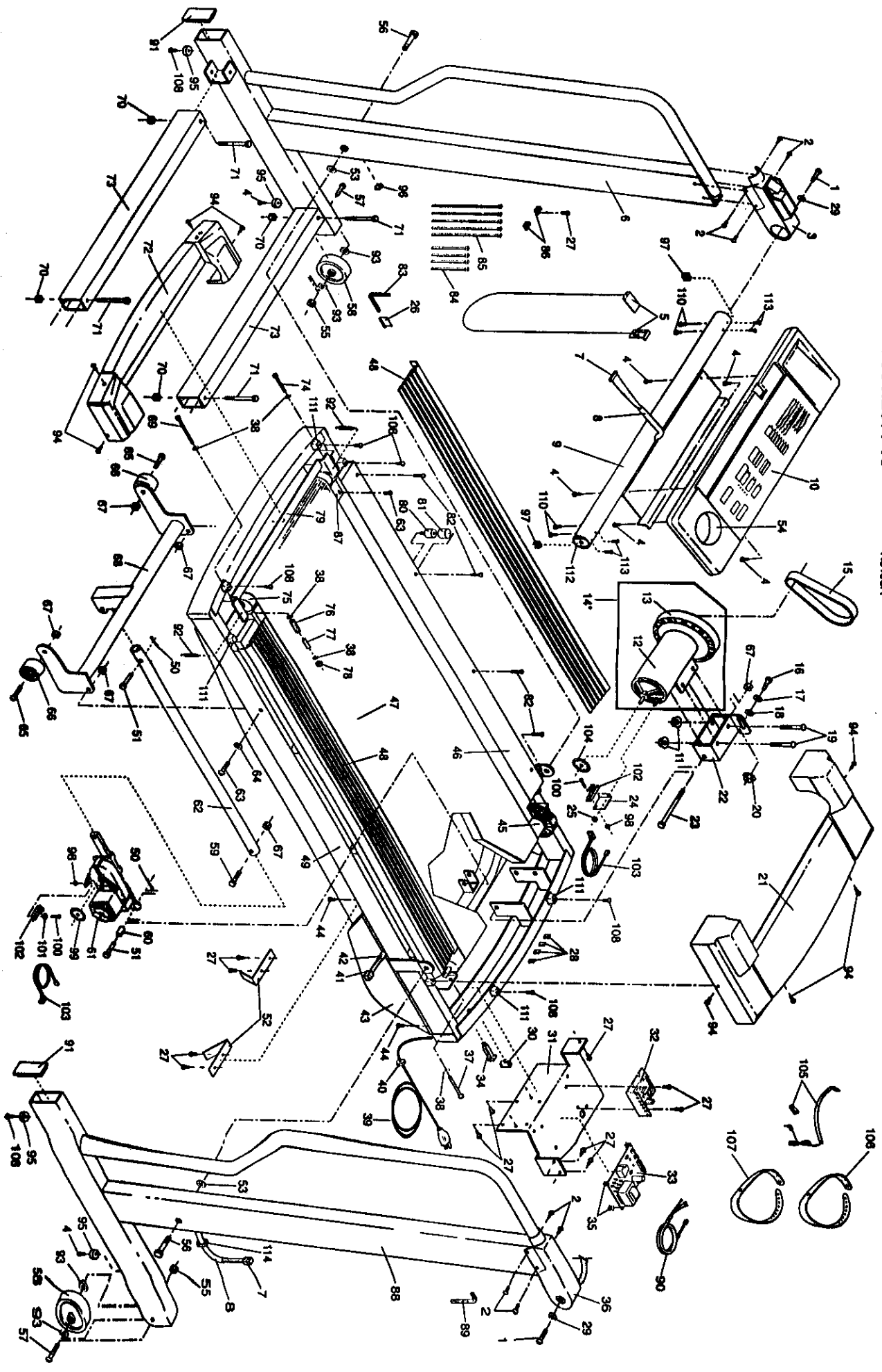


EXPLODED DRAWING—Model No. 831 297740

FO196A



MODEL NUMBER: 29774
 VERSION: 00
 PRODUCT NAME: PROFORM 730 SI
 PRODUCT DESC:

MODEL/PART BOOK LISTING

PAGE 1
 INI023P1
 RUN DATE: 2/08/97
 RUN TIME: 8:04:49

KEY NUMBER	PART NUMBER	DESCRIPTION	QUANTITY
.	.	PROFORM 730 SI	0
1	013438	CONSOLE BOLT	2
2	013213	CONSOLE BRACKET SCREW	8
3	127091	LEFT CONSOLE BRACKET	1
4	013322	CONSOLE SCREW/HOOD SCREW	13
.	.	(NOTE: BOTH REV OF OM	0
.	.	CALLED THIS CNSL/ANCHOR	0
.	.	SCREW, IT'S THE CNSL/HOOD	0
.	.	SCREWS, FOR ANCHOR SCREWS	0
.	.	SEE KEY# 108.)	0
5	119038	SAFETY KEY	1
6	126612	LEFT UPRIGHT	1
7	129857	WIRE HARNESS	1
8	128265	CONSOLE CABLE LOOM	2
9	129349	CONSOLE CROSSBAR	1
10	127682	CONSOLE	1
11	105477	MOTOR NUT	2
12	129670	MOTOR	1
13	113278	PULLEY/FLYWHEEL/FAN	1
14	129671	MTR/PULY/FLWH/FAN	1
15	126134	MOTOR BELT	1
16	013547	MOTOR TENSION BOLT	1
17	122812	MOTOR TENSION WASHER	1
18	014117	MOTOR TENSION STAR WASHER	1
19	123385	MOTOR BOLT	2
20	120867	MOTOR TENSION NUT	1
21	129278	FRONT HOOD	1
22	122644	MOTOR MOUNT BRACKET	1
23	107503	MOTOR SWIVEL BOLT	1
24	120653	OPTIC SWITCH BRACKET	1
25	122125	OPTIC SWITCH NUT	1
26	016028	WRENCH CLIP	1
27	120630	SCREW	16
28	.	PART NOT USED	0
.	.	(KEY# 28 WIRE CLIP)	0
29	014086	CONSOLE BRACKET WASHER	2
30	119163	ON/OFF SWITCH	1
31	126910	ELECTRONICS BRACKET	1
32	120767	CONTROLLER	1
33	127684	POWER BOARD W/CLIPS	1
34	109382	CIRCUIT BREAKER	1
35	125819	PLASTIC STAND-OFF	4
36	126641	RIGHT CONSOLE BRACKET	1
37	112609	FRONT ROLLER ADJ BOLT	1
38	014127	ADJUSTMENT WASHER	5
39	031229	POWER CORD	1
40	019084	GROMMET	1
41	.	SEE KEY# 7	1
.	.	KEY# 41 SFTYCVR WIRE HRNS	0
42	.	PART NOT USED	0
.	.	(KEY#42 SFTYCVR CBL LOOM)	0
43	131612	SAFETY COVER	1
44	013162	SAFETY COVER SCREW	22
45	128597	FRONT ROLLER/PULLEY	1

MODEL NUMBER: 29774
 VERSION: 00
 PRODUCT NAME: PROFORM 730 SI
 PRODUCT DESC:

MODEL/PART BOOK LISTING

PAGE 2
 INI023P1
 RUN DATE: 2/08/97
 RUN TIME: 8:04:49

KEY NUMBER	PART NUMBER	DESCRIPTION	QUANTITY
46	127686	WALKING BRD W/FASTENERS	1
47	127688	WALKING BELT W/FASTENERS	1
48	127690	FOOT RAIL W/FASTENERS	2
49	NSP	FRAME	1
50	106334	HAIR PIN COTTER	2
51	128204	COTTER PIN	2
52	124318	BELT GUIDE	2
53	118570	UPRIGHT PIVOT WASHER	2
54	128119	CUP HOLDER	1
55	012056	WHEEL NUT	2
56	126635	UPRIGHT PIVOT BOLT	2
57	117806	WHEEL BOLT	2
.	.	(NOTE: IN 10/95 OWNER'S	0
.	.	MANUAL KEY# 57 WAS SHOWN	0
.	.	AS BOTH THE WHEEL BOLT	0
.	.	AND HOOD ANCHOR, FOR THE	0
.	.	HOOD ANCHOR SEE KEY# 111)	0
58	052014	FRONT WHEEL	2
59	013375	INCLINE ROD BOLT	1
60	114270	INCLINE MOTOR SPACER	1
61	129875	INCLINE MOTOR	1
62	126609	INCLINE ROD	1
63	.	PART NOT USED	0
.	.	KEY# 63 RLR GUARD SCREW	0
.	.	WAS NOT USED, FOR THE	0
.	.	INCLINE LEG BOLT SEE #65	0
64	014086	INCLINE LEG WASHER	2
65	013544	INCLINE LEG PAD BOLT	4
66	052012	INCLINE LEG WHEEL	2
67	012149	INCLINE LEG NUT	5
68	126603	INCLINE LEG	1
69	128260	RIGHT REAR ADJ.BOLT	1
70	119425	BASE CROSSBAR NUT	4
71	114009	BASE CROSSBAR BOLT	4
72	126395	REAR HOOD	1
73	126625	BASE CROSSBAR	2
74	105444	LEFT REAR ADJ.BOLT	1
75	127647	REAR ROLLER	1
76	128986	REAR RLR TENSION SPRING	1
77	123470	SPRING SLEEVE	1
78	121576	ROLLER TENSION NUT	1
79	126607	REAR ROLLER GUARD	1
80	127689	PLATFORM ISOLATOR	8
81	.	PART NOT USED	0
.	.	(KEY# 81 ISOLATOR COVER)	0
82	128272	PLATFORM SCREW	8
83	126040	3/16" ALLEN WRENCH	1
84	.	PART NOT USED	0
.	.	(NOTE: OM PICTURED IT AS	0
.	.	WIRE TIES, BUT CALLED IT	0
.	.	RUBBER HOOD ANCHOR. THE	0
.	.	WIRE TIES WERE NOT USED.	0
.	.	FOR HOOD ANCHOR SEE KEY#	0
.	.	111)	0

MODEL NUMBER: 29774
 VERSION: 00
 PRODUCT NAME: PROFORM 730 SI
 PRODUCT DESC:

MODEL/PART BOOK LISTING

PAGE 1
 INI023P1
 RUN DATE: 2/08/97
 RUN TIME: 8:04:49

KEY NUMBER	PART NUMBER	DESCRIPTION	QUANTITY
85	016057	8" WIRE TIE	5
86	116927	TIE HOLDER CLAMP	1
87	128479	ROLLER GUARD	4
88	126622	RIGHT UPRIGHT	1
89	045017	7/32" ALLEN WRENCH	1
90	126986	MOTOR CONTROLLER WIRE	1
91	110722	UPRIGHT ENDCAP	2
92	127544	ROLLER GUARD SPRING	2
93	112628	WHEEL SPACER	4
94	.	SEE KEY #4	0
	.	(KEY# 94 HOOD SCREW)	0
95	126650	UPRIGHT FOOT	4
96	126960	HOLE PLUG	1
97	111869	CROSSBAR CAGE NUT	2
98	012152	SMALL NUT	2
99	109370	INCLINE OPTIC DISK	1
100	102959	SMALL BOLT	2
101	014157	STAR WASHER	1
102	102955	OPTIC SWITCH	2
103	126911	OPTIC SWITCH WIRE HARNESS	2
104	119070	SPEED DISK	1
105	127731	PULSE SENSOR/CLOTHES CLIP	1
106	126481	RED HEADBAND	1
107	126558	BLUE HEADBAND	1
108	013300	ANCHOR SCREW	8
109	.	PART NOT USED	1
	.	(NOTE: KEY# 109 IS NOT	0
	.	FOUND ON ANY DRAWINGS,	0
	.	18" CABLE LOOM)	0
110	013540	CROSSBAR SCREW	4
111	125802	RUBBER HOOD ANCHOR	4
112	128465	CROSSBAR BRACKET	2
113	013141	CROSSBAR BRACKET SCREW	4
114	129004	GROUND WIRE GROMMET	1
.	.	NON-ILLUSTRATED PARTS	0
#	130249	LT CONSOLE BRACKET LATCH	1
#	127711	LATCH WARNING DECAL	1
#	124803	CONSOLE WARNING DECAL	1
#	129004	SAFETY COVER GROMMET	1
#	114011	4" BLK WIRE, M/F (NOT USED)	1
#	109407	4" BLACK WIRE, 2F	1
#	107771	8" WHITE WIRE, M/F	1
#	101897	14" WHITE WIRE, 2F	1
#	102634	8" GREEN GROUND WIRE	1
#	112083	8" BLUE WIRE, 2F	1
#	114953	14" BLUE WIRE, 2F	1
#	118204	NOT USED, 8"BLUE WIRE M/F	1
#	118201	NOT USED, (8"RED WIRE M/F)	0
#	101799	NOT USED, (9"BLK WIRE M/F)	0
#	.	NOT USED, 26" GROUND WIRE	1
#	.	NOT USED, 70" GROUND WIRE	1
#	129859	100" GREEN GROUND WIRE	1
#	117988	24" CABLE LOOM	1
#	127860	FASTENER	12

MODEL NUMBER: 29774
VERSION: 00
PRODUCT NAME: PROFORM 730 SI
PRODUCT DESC:

MODEL/PART BOOK LISTING

PAGE 4
INI023P1
RUN DATE: 2/08/97
RUN TIME: 8:04:49

KEY NUMBER	PART NUMBER	DESCRIPTION	QUANTITY
#	125956	TECH SHEET	1
#	123945	TECH SHEET ENVELOPE	1
#	126585	USER'S MANUAL	1
#	126584	LITERATURE PACKET	1
.	.	126585 USER'S MANUAL	1
.	.	126482 HEADBAND PULSE	1
.	.	126481 RED HEADBAND	1
.	.	126558 BLUE HEADBAND	1
.	.	126842 HARDWARE KIT	1
.	.	013141 #8 X 1/2" SCREW	1
.	.	045017 ALLEN WRNCH 7/32"	1
.	.	126040 ALLEN WRNCH 3/16"	1
.	.	016028 WRENCH CLIP	1
.	.	*** THESE ARE ESTIMATED COSTS!!!	0
.	.		0