

PART LIST—Model No. 30504.0

R0505A

To locate the parts listed below, see the EXPLODED DRAWING attached in the center of this manual.

Key No.	Qty.	Description	Key No.	Qty.	Description
1	2	Foot Rail	52	2	Rear Wheel
2	1	Left Front Endcap	53	4	Rear Wheel Cover
3	28	Screw	54	4	Wheel Bolt
4	2	Frame Pivot Bolt	55	6	1" Bolt
5	2	Rear Roller Washer	56	1	Left Wheel Bracket
6	1	Motor Belt	57	1	Right Rear Endcap
7	1	Front Roller/Pulley	58	1	Rear Roller
8	1	Magnet	59	1	Right Wheel Bracket
9	2	Frame Pivot Nut	60	4	3/4" Bolt
10	2	Frame Spacer	61	1	Left Outer Cover
11	2	Idler Arm Washer	62	1	Latch Assembly
12	2	Frame Pivot Washer	63	1	Static Warning Decal
13	9	Nut	64	1	Pulse Assembly
14	1	Idler Arm Pulley	65	1	Right Inner Cover
15	1	Pulley Bolt	66	5	3/4" Screw
16	1	Idler Arm Bolt	67	2	Lower Handrail
17	1	Idler Arm Bushing	68	1	Upper Handrail
18	1	Idler Arm	69	1	Console
19	1	Idler Arm Spring	70	6	Belly Pan Screw
20	1	Reed Switch	71	22	Screw
21	5	Small Screw	72	1	Access Door Screw
22	1	Sensor Clip	73	2	Upper Body Handle
23	1	Lift Frame	74	2	Rope Guide
24	1	Drive Motor	75	1	Top Housing
25	2	Motor Bolt	76	1	Walking Platform
26	2	Lift Frame Pivot Bolt	77	1	Controller Wire
27	2	Upright Pivot Washer	78	6	Pulley
28	1	Controller	79	4	Pulley Nut
29	2	Controller Screw	80	2	Pulley Bolt
30	2	Warning Decal	81	6	Inside Cover Bolt
31	1	Heat Sink	82	2	Fan
32	14	1/2" Screw	83	4	Fan Screw
33	1	Power Board	84	1	Key Clip
34	4	Plastic Stand-off	85	1	Power Cord Bracket Assembly
35	1	Electronics Bracket	86	1	Resistor
36	1	Hood Cover	87	2	Upright Pivot Bushing
37	1	Hood	88	1	Right Outer Cover
38	1	Belly Pan	89	1	Upright Pivot Shaft
39	2	Belt Guide	90	2	Upright Pivot Bolt
40	1	Right Front Endcap	91	1	Reset/Off Circuit Breaker
41	2	Front Walking Platform Screw	92	1	Tension Motor Wire
42	4	Walking Platform Screw	93	4	Base Pad
43	1	Frame	94	10	3/4" Tek Screw
44	4	Belt Guide Screw	95	1	Upright Base Belly Pan
45	4	Isolator	96	1	Upright Base
46	4	Isolator Bolt	97	2	Washer
47	1	Latch Catch	98	2	3" Bolt
48	18	Latch Catch Screw	99	2	Front Wheel
49	2	Endcap Plate	100	2	Incline Motor Bolt, Top
50	1	Left Rear Endcap	101	1	Incline Motor
51	2	Rear Roller Adj. Bolt	102	1	Incline Wire Harness

Key No.	Qty.	Description	Key No.	Qty.	Description
103	1	Upright Base Pad	125	9	Tie Block
104	2	Incline Motor Bolt, Bottom	126	1	iFIT Cable
105	1	Base Hood	127	1	iFIT Jack
106	1	Left Inner Cover	128	1	Latch Warning Decal
107	1	Bottle Holder	129	4	Belly Pan Clip
108	1	Upright Cover, Back	130	16	Upright Cover Clip
109	1	Pulley Shaft	131	2	Long Endcap Screw
110	1	Upright	132	1	Console Warning Decal
111	1	Bottle Holder Clamp	133	4	Resistance Motor Bolt
112	1	Access Door	#	1	46" Wire Harness
113	1	Upper Body Mechanism	#	1	45" Console Wire Harness
114	1	Resistance Motor	#	1	14" Red Wire, 2F
115	1	Upright Cover, Front	#	1	12" Red Wire, 2F
116	4	Small Star Washer	#	1	14" White Wire, 2F
117	1	Small Nut	#	1	8" Green Wire, F/Ring
118	2	Upright Bolt	#	1	4" Green Wire, F/Ring
119	4	Small Nut	#	2	4" Blue Wire, M/F
120	4	Front Endcap Screw	#	1	User's Manual
121	1	Walking Belt			
122	1	Allen Wrench			
123	9	Cable Tie			
124	1	Releasable Tie			

#These parts are not illustrated
Specifications are subject to change without notice.

ORDERING REPLACEMENT PARTS

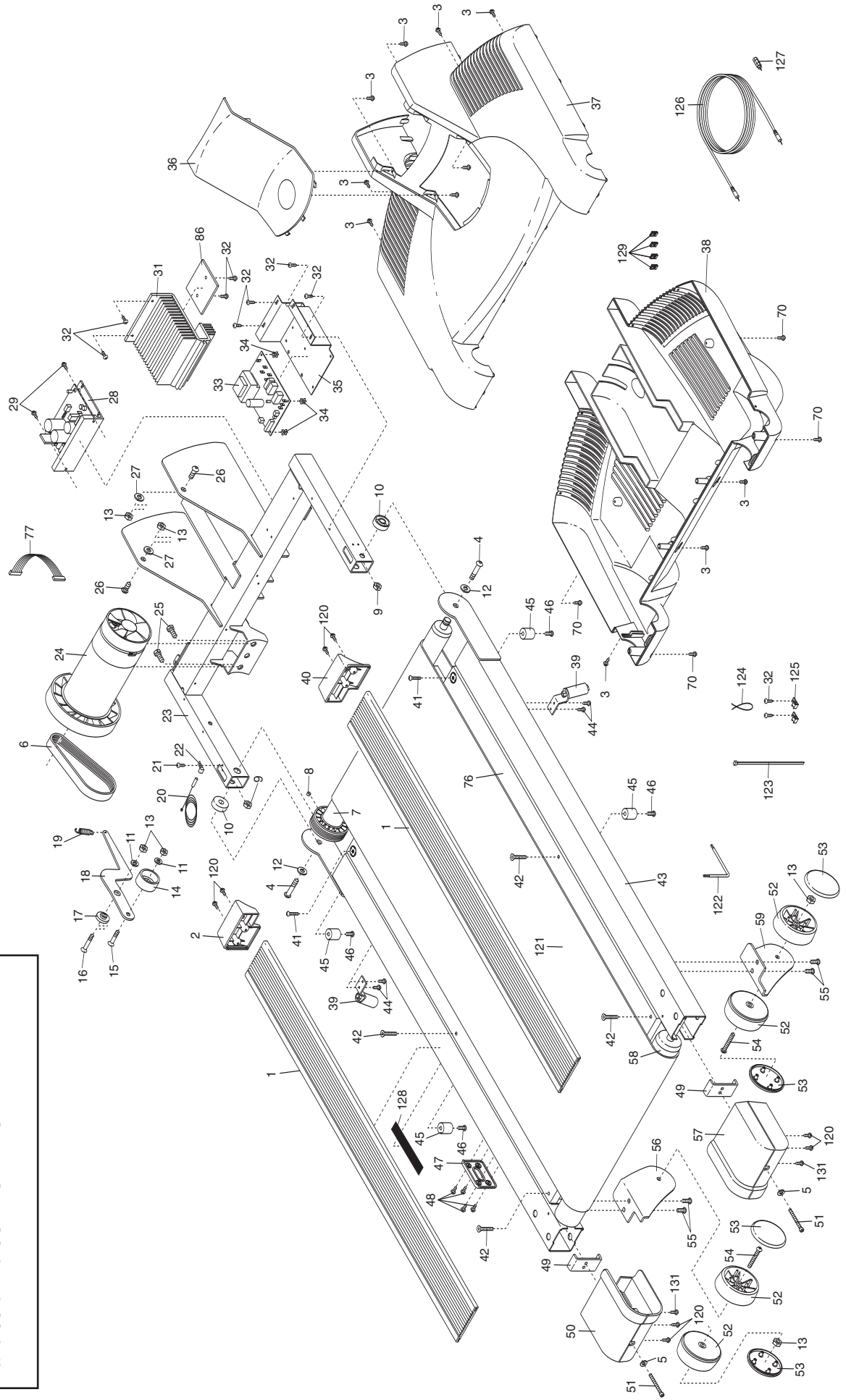
To order replacement parts, call toll-free 1-888-936-4266, Monday through Friday 8h00 until 17h00 Eastern Time (excluding holidays). When ordering parts, please be prepared to give the following information:

- the MODEL NUMBER OF THE PRODUCT (30504.0)
- the NAME OF THE PRODUCT (NordicTrack X5 Incline Trainer)
- the SERIAL NUMBER OF THE PRODUCT (see the front cover of this manual)
- the KEY NUMBER AND DESCRIPTION OF THE PART(S) (see the PART LIST on pages 34 and 35 and the EXPLODED DRAWING attached in the center of this manual)

EXPLODED DRAWING—Model No. 30504.0

R0505A

To identify the parts shown on this exploded drawing, see the PART LIST on pages 34 and 35 of the USER'S MANUAL.



EXPLODED DRAWING—Model No. 30504.0

R0505A

