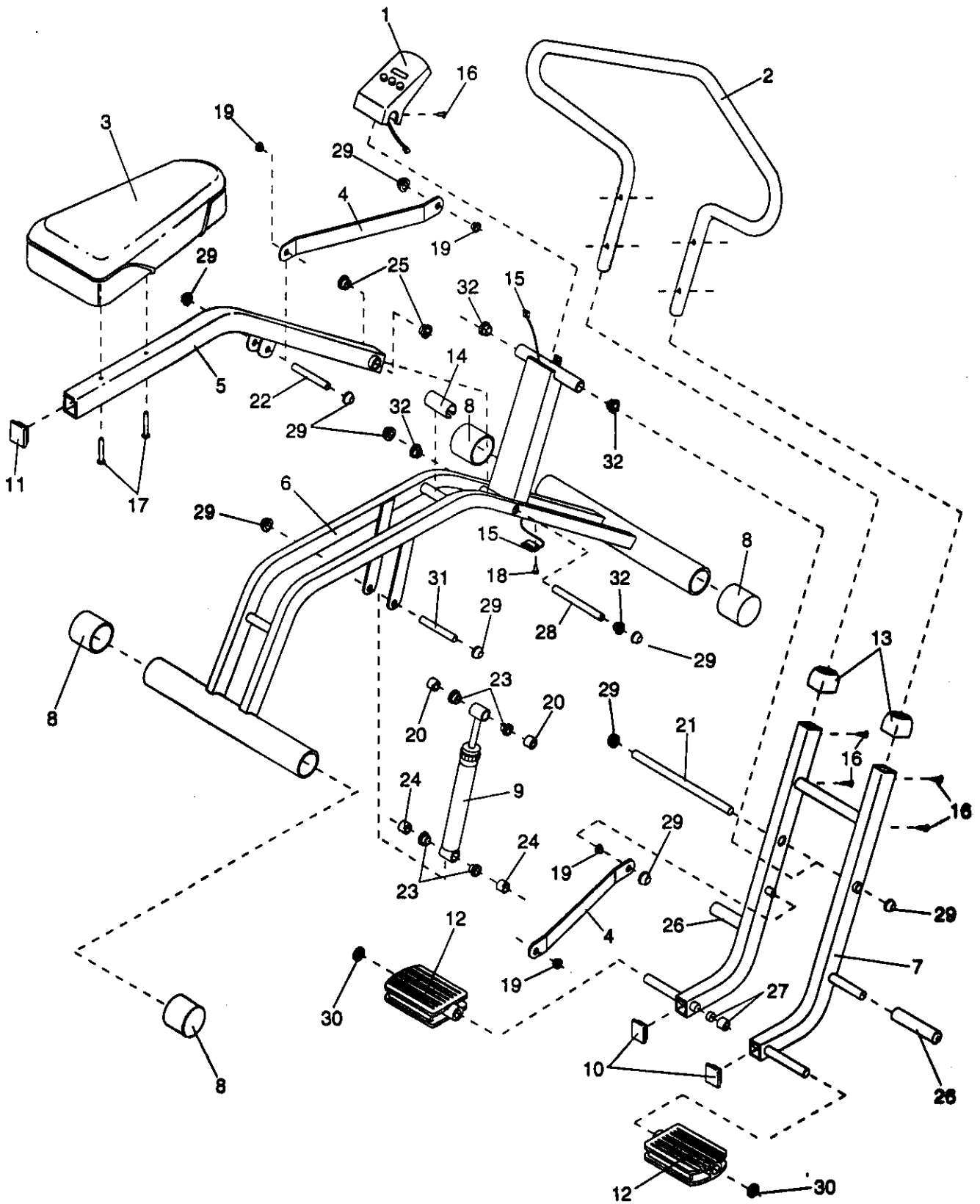


EXPLODED DRAWING—Model No. WLMC00348

R0995A



MODEL NUMBER: WLMC0034
 VERSION: 08
 PRODUCT NAME: CARDIO GLIDE
 PRODUCT DESC:

MODEL/PART BOOK LISTING

PAGE 1
 IN1023P1
 RUN DATE: 8/08/96
 RUN TIME: 18:13:21

KEY NUMBER	PART NUMBER	DESCRIPTION	QUANTITY
	.	CARDIO GLIDE	0
1	127104	MONITOR	1
2	117529	HANDLEBAR	1
3	123025	SEAT W/HARDWARE	1
4	126341	LINK ARM W/HARDWARE	2
5	127757	SEAT TUBE W/HARDWARE	1
6	NSP	FRAME	1
7	124733	PEDAL FRAME W/HARDWARE	1
8	109416	ROUND ENDCAP	4
9	123216	RESISTANCE CYL W/HARDWARE	1
10	117545	1 1/4" X 1 1/4" ENDCAP	2
11	117544	1 1/2" X 2" ENDCAP	1
12	126406	PEDAL W/HARDWARE	2
13	125390	DOMED ENDCAP	2
14	122296	BUMPER	1
15	127898	REED SWITCH/SENSOR WIRE	1
16	013162	#8 X 1/2" SCREW	5
17	013498	1/4" X 2" SCREW	2
18	013300	#8 X 3/4" SCREW	2
19	103677	1/2" LINK ARM BUSHING	4
20	117509	3/8" SPACER	4
21	128165	1/2" X 11.5" AXLE W/HDWR	1
22	127758	1/2" X 3.5" AXLE W/HDWR	1
23	106876	1/2" CYLINDER BUSHING	2
24	117510	15/16" SPACER	2
25	110576	1/2" PIVOT BUSHING	6
26	118904	FOOT PEG GRIP	2
27	113349	MAGNET/RETAINER	1
28	128164	1/2" X 6.75" AXLE W/HDWR	1
29	103903	1/2" DOME AXLECAP	6
30	012155	1/2" PUSH NUT	2
	.	NOTE: IF PEDAL TOOL IS	0
	127781	NEEDED SEND ASSY# 127781.	0
31	127138	1/2" X 4" AXLE W/HDWR	1
32	124546	1/2" PLASTIC BUSHING	4
33	054023	CLIP	1
.	.	NON-ILLUSTRATED PARTS	0
#	109591	HOT SHOCK DECAL	1
#	118102	STABILIZER DECAL	2
#	104838	GREASE	1
#	125453	PEDAL TOOL	1
#	132272	CONSOLE BATTERY COVER	1
#	119236	WORKOUT CHART	1
#	127625	USER'S MANUAL	1
#	128129	LITERATURE PACKET	1
.	.	127625 USER'S MANUAL	1
.	.	119236 WORKOUT CHART	1
#	123802	HARDWARE KIT	1
.	.	103903 AXLECAP	5
.	.	012155 PUSH NUT	2
.	.	110576 BUSHING	1
.	.	117509 SPACER	2
.	.	117552 11.5" AXLE	1
.	.	013162 1/2" SCREW	5

MODEL NUMBER: WLMC0034
VERSION: 08
PRODUCT NAME: CARDIO GLIDE
PRODUCT DESC:

MODEL/PART BOOK LISTING

PAGE 2

IN1023P1

RUN DATE: 8/08/96

RUN TIME: 18:13:21

KEY NUMBER	PART NUMBER	DESCRIPTION	QUANTITY
.	.	125453 PEDAL TOOL	1
.	.	104838 GREASE	1
.	.	125390 ENDCAP	2