

# PART LIST—Model No. ECTL81804.2

R0805A

To locate the parts listed below, see the EXPLODED DRAWING attached in the center of this manual.

Key No.	Qty.	Description	Key No.	Qty.	Description	Key No.	Qty.	Description
1	2	Foot Rail Cover	47	1	Lift Frame	91	2	Lift Pivot Bolt
2	7	3/4" Screw	48	2	Motor Bolt	92	2	Wheel Bolt
3	1	Left Foot Rail	49	2	Motor Bushing	93	2	Front Wheel
4	2	Handle Decal	50	1	Filter Wire	94	1	Shock
5	4	Handle Screw	51	1	Controller Plate	95	1	Right Upright
6	2	Cushion Handle	52	3	Small Star Washer	96	1	Right Foot Rail
7	2	Cushion Housing	53	1	Lift Motor Bolt, Top	97	4	Base Pad
8	2	Isolator	54	22	Electronic Screw	98	4	Base Pad Screw
9	2	Ball Detent	55	1	On/Reset	99	1	Base
10	8	5/8" Screw			Circuit Breaker	100	2	Base Endcap
11	1	English Latch Warning Decal	56	1	Controller	101	2	Caution Decal
			57	1	Power Cord	102	1	Lift Motor Bolt, Bottom
12	2	Platform Screw	58	1	Grommet			
13	1	Latch Catch	59	1	Transformer	103	1	Incline Motor
14	1	Walking Belt	60	1	Audio Wire Nut	104	1	Stop Bracket
15	1	Walking Platform	61	1	Audio Wire	105	2	Rear Platform Screw
16	1	Frame	62	1	Hood Cover	106	2	Tie Holder
17	2	Belt Guide	63	5	Hood Screw	107	2	Plastic Tie
18	1	Left Rear Endcap	64	1	Hood Plate	108	1	Upright Wire Harness
19	1	Rear Roller	65	1	Hood	109	2	Handrail Endcap
20	2	Wheel Endcap	66	4	Motor Belly Pan Screw	110	4	Pulse Sensor Screw
21	15	Screw	67	1	Motor Belly Pan	111	4	Pulse Sensor
22	2	Isolator Guide	68	6	Belly Pan Fastener	112	4	Pulse Sensor Base
23	1	Front Roller/Pulley	69	8	Frame Belly Pan Screw	113	1	Left Pulse Grip
24	1	Magnet				114	1	Handrail
25	9	Nut	70	1	Allen Wrench	115	1	Base Wire Harness
26	2	Frame Pivot Bushing	71	1	Frame Belly pan	116	1	Key Clip
27	2	Frame Pivot Spacer	72	1	Right Rear Endcap	117	1	Access Door
28	4	Frame Pivot Washer	73	2	Rear Foot	118	1	Front Right Endcap
29	2	Frame Pivot Bolt	74	2	Rear Roller Bolt	119	1	Front Left Endcap
30	1	Idler Pulley Nut	75	2	Rear Roller	120	1	Audio Cable
31	1	CD Holder			Star Washer	121	1	Jack
32	1	Idler Pulley	76	2	Rear Roller Washer	122	1	Right Pulse Grip
33	1	Idler Pulley Bolt	77	2	Latch Bolt	123	1	French Latch Warning Decal
34	1	Idler Arm Bolt	78	15	Latch Catch Screw			
35	1	Idler Arm Bushing	79	1	5/32" Allen Wrench	124	1	Console Matrix
36	1	Idler Arm	80	1	Console Base	125	4	Matrix Screw
37	1	Idler Arm Spring	81	1	Console	126	4	#8 Washer
38	2	Idler Pulley Washer	82	2	Static Decal	127	4	#8 x 1.375" Screw
39*	1	Idler Arm Assembly	83	15	Console Back Screw	#	1	4" Green Wire, M/Ring
40	1	Motor Belt	84	1	Latch Pin Assembly	#	1	8" Black Wire, 2 Ring
41	1	Drive Motor	85	1	Console Back	#	1	8" Blue Wire, 2 F
42	1	Reed Switch	86	16	Upright Bolt	#	1	User's Manual
43	1	Cup Holder	87	1	Outlet Bracket			
44	1	Reed Switch Clip	88	8	3/8" Star Washer			
45	4	Hood Bracket	89	1	Latch Housing			
46	1	Ground Wire	90	1	Left Upright			

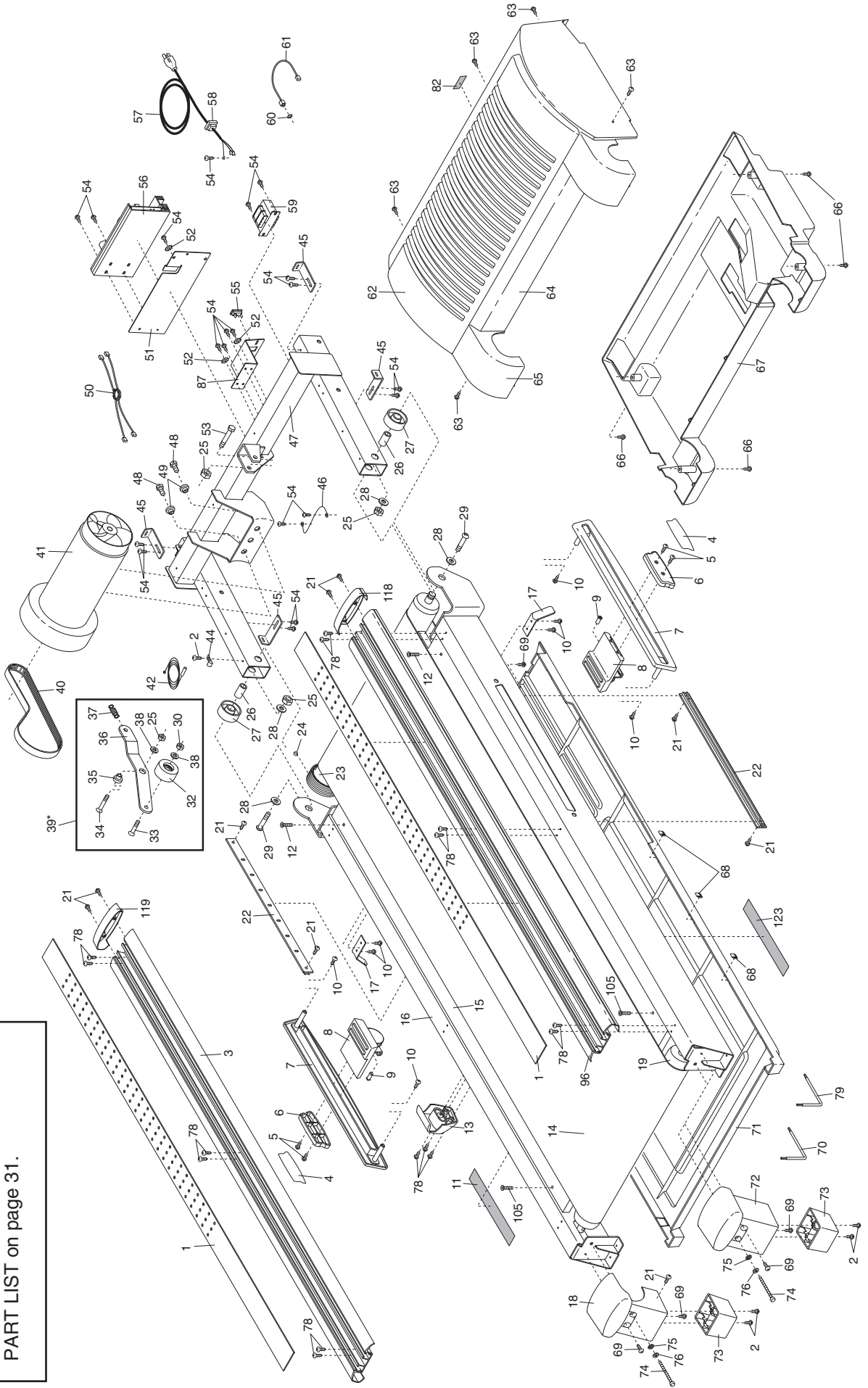
\*Includes all parts shown in the box

#These parts are not illustrated

# EXPLODED DRAWING—Model No. ECTL81804.2

R0805A

To identify the parts shown on this EXPLODED DRAWING, see the PART LIST on page 31.



# EXPLODED DRAWING—Model No. ECTL81804.2

R0805A

