

PART LIST—Model No. FMBE9097.0

R0907A

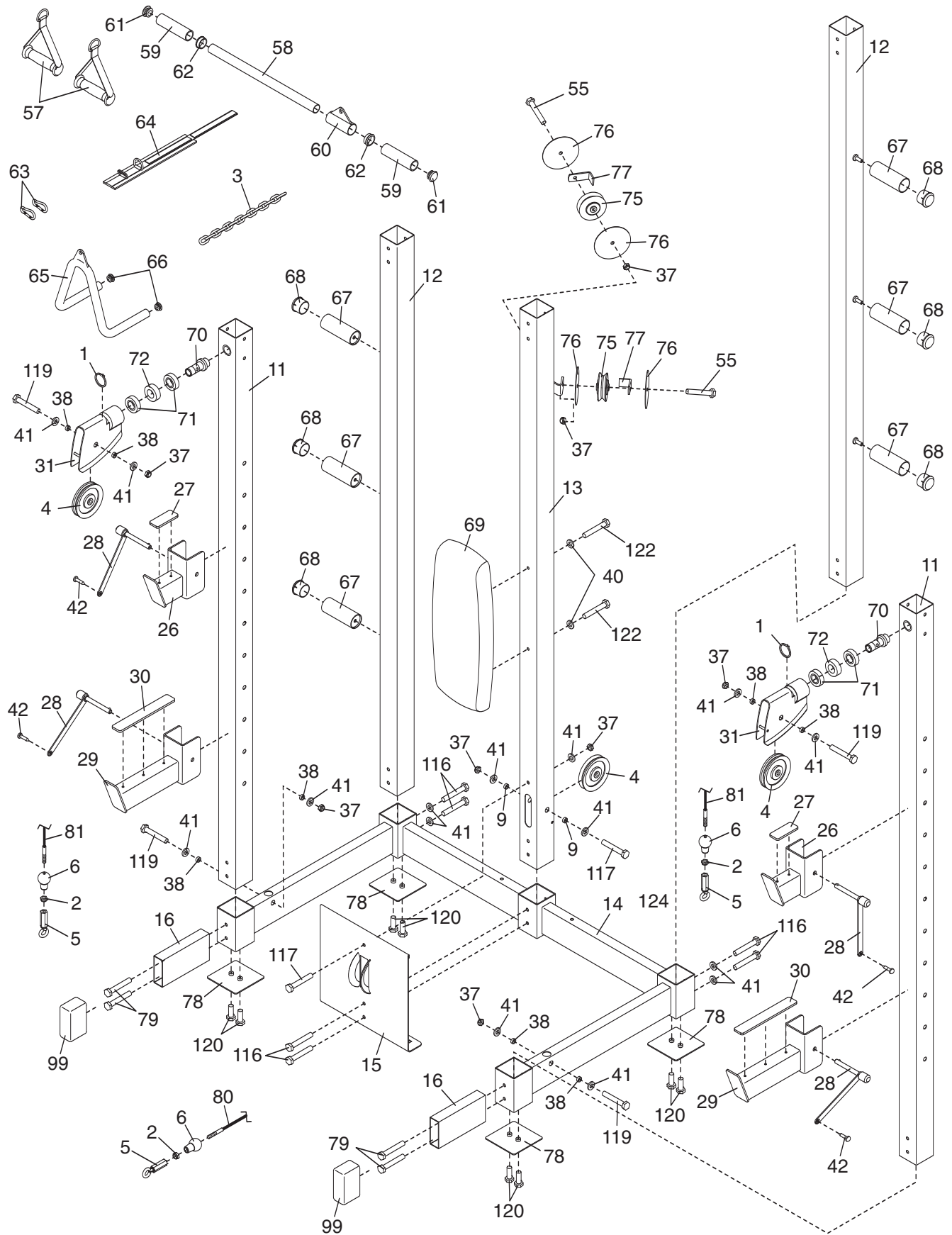
Key No.	Qty.	Description	Key No.	Qty.	Description
1	2	Spring Retainer	51	1	M10 x 65mm Bolt
2	3	M8 Jamnut	52	2	M8 x 40mm Bolt
3	1	Chain	53	2	Large Washer
4	3	Large Pulley	54	4	M10 x 30mm Screw
5	3	Cable Eyelet	55	2	M10 x 60mm Bolt
6	3	Cable Stop	56	2	Weight Clip
7	4	M10 Large Washer	57	2	Pulley Handle
8	5	M8 Nylon Locknut	58	1	Lat Bar
9	2	M10 x 25mm Spacer	59	2	Lat Bar Handgrip
10	2	M10 x 25mm Bolt	60	1	Lat Bar Connector
11	2	Front Upright	61	2	38mm Round Inner Cap
12	2	Rear Upright	62	2	Lat Bar Insert
13	1	Center Upright	63	2	Cable Clip
14	1	Base	64	1	Ankle Strap
15	1	Foot Plate	65	1	Row Bar
16	2	Base Foot	66	2	25mm Round Inner Cap
17	1	Top Frame	67	6	Weight Storage Tube
18	1	Weight Carriage Frame	68	8	48mm x 2mm Round Inner Cap
19	1	Weight Carriage	69	1	Butterfly Backrest
20	1	Weight Carriage Base	70	2	Trunnion
21	2	Weight Carriage Guide	71	4	Swivel Bracket Bearing
22	1	Left Arm	72	2	Swivel Bracket Spacer
23	1	Right Arm	73	8	Bracket Retainer
24	1	Right Adjustment Bracket	74	16	Small Pulley
25	1	Left Adjustment Bracket	75	2	“V”-pulley
26	2	Weight Rest	76	4	Full Pulley Guard
27	2	Weight Rest Pad	77	2	Large Cable Trap
28	4	Upright Pin/Tether	78	4	Floor Guard
29	2	Weight Spotter	79	4	M10 x 155mm Screw
30	2	Weight Spotter Pad	80	1	Low Cable
31	2	Swivel Bracket	81	1	High Cable
32	1	M8 Washer	82	4	63.5mm Round Inner Cap
33	4	Barbell Spotter Retainer	83	2	Arm Handgrip
34	1	“U”-bracket	84	2	Arm Handgrip Cap
35	2	Adjustment Bracket Bushing	85	2	Arm Knob
36	2	M6 Nylon Locknut	86	4	M10 Lock Washer
37	32	M10 Nylon Locknut	87	8	Butterfly Bushing
38	24	M10 x 6.5mm Spacer	88	4	Bushing Cap
39	2	M10 x 20mm Spacer	89	1	Right Arm Pad
40	2	M6 Washer	90	1	Left Arm Pad
41	43	M10 Washer	91	16	Half Pulley Guard
42	4	M4 x 16mm Self-tapping Screw	92	2	Pulley Plate
43	1	Arm Cable	93	5	Small Cable Trap
44	2	M6 x 15mm Bolt	94	1	Rear Cable
45	2	M8 x 22mm Shoulder Bolt	95	5	75mm Square Inner Cap
46	2	M6 x 20mm Chamfer Screw	96	2	Weight Carriage Tube
47	4	M6 x 16mm Screw	97	2	Weight Bumper
48	7	M10 x 45mm Bolt	98	1	Double “U”-bracket
49	4	Weight Carriage Bushing	99	2	38mm x 100mm Large Outer Cap
50	2	Weight Carriage Bumper	100	1	Weight Carriage Block

Key No.	Qty.	Description	Key No.	Qty.	Description
101	2	38mm x 100mm Inner Cap	115	1	Left Spotter Hook
102	2	Barbell Adapter	116	14	M10 x 110mm Screw
103	2	48mm x 3mm Round Inner Cap	117	2	M10 x 93mm Bolt
104	2	Barbell Carriage	118	4	M10 x 25mm Screw
105	4	Bar Slide Bushing	119	13	M10 x 55mm Bolt
106	4	Barbell Bushing	120	8	M4 x 20mm Self-tapping Screw
107	2	Barbell Bumper	121	5	M10 x 48mm Bolt
108	4	38mm Barbell Spotter Bushing	122	2	M6 x 90mm Screw
109	2	Barbell Spotter	*	–	User's Manual
110	1	Right Spotter Hook	*	–	Exercise Guide
111	2	Barbell Spotter Bumper	*	–	Grease Packet
112	2	Barbell Guide	*	–	Hex Key
113	1	Barbell	*	–	Retainer Tool
114	1	Locking Bar	*	–	Cabling Rod

Note: Specifications are subject to change without notice. See the back cover of this manual for information about ordering replacement parts. *These parts are not illustrated.

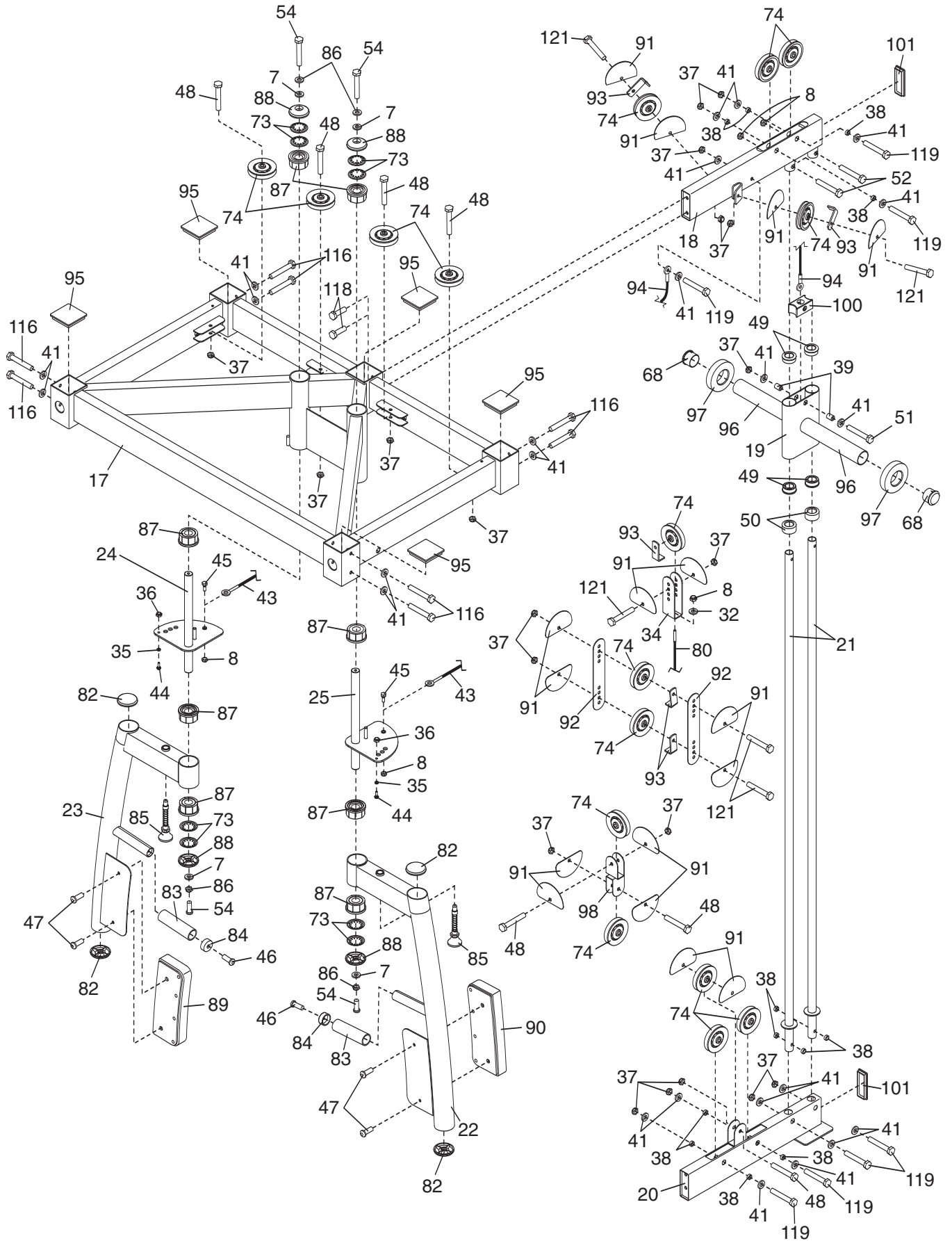
EXPLODED DRAWING A—Model No. FMBE9097.0

R0907A



EXPLODED DRAWING B—Model No. FMBE9097.0

R0907A



EXPLODED DRAWING C—Model No. FMBE9097.0

R0907A

