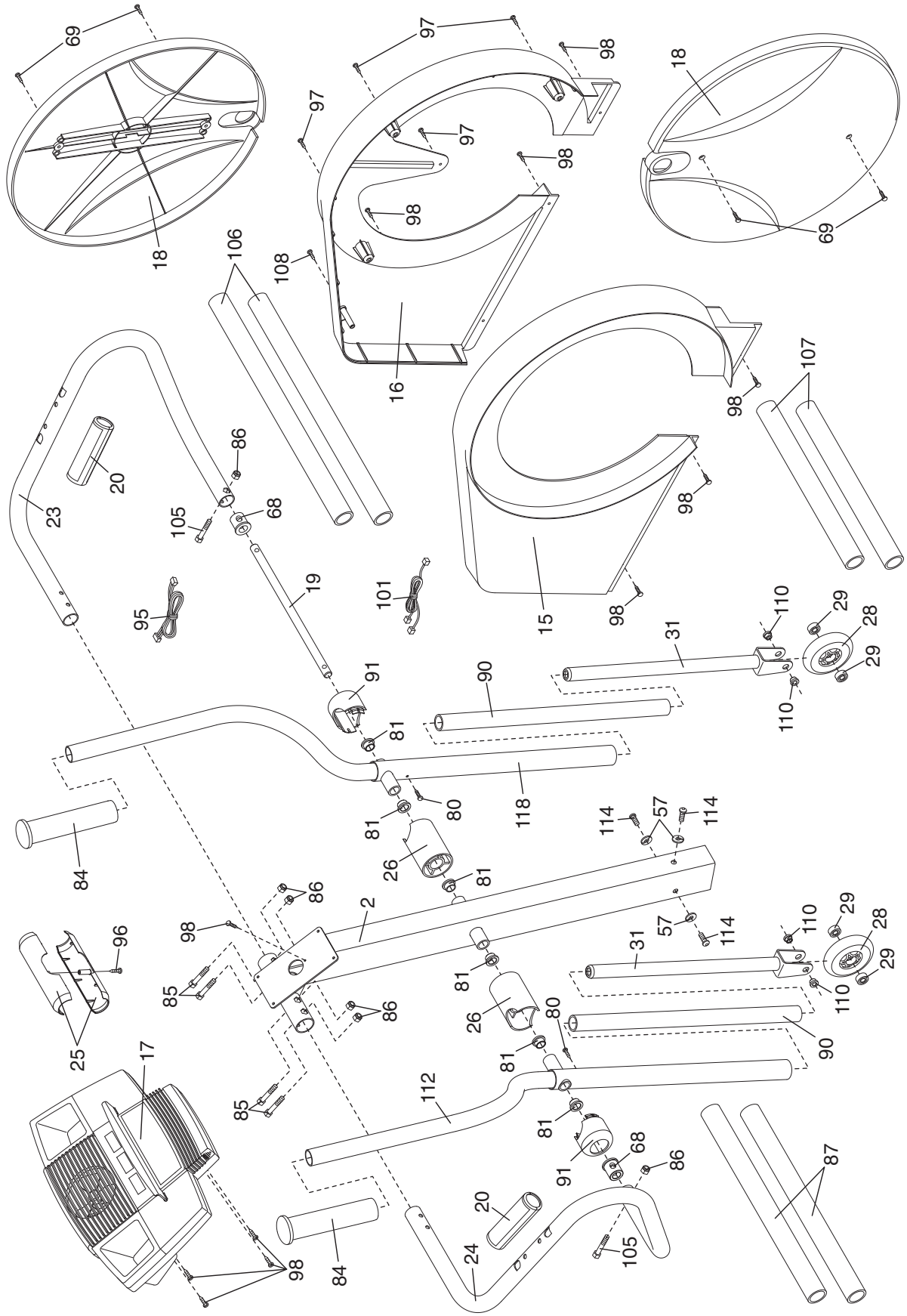


Model No. HRCCEL59930 R0904A

# EXPLODED DRAWING—Model No. HRCCEL59930

R0904A

To identify the parts shown below, see the PART LIST on pages 24 and 25.



Key No.	Qty.	Description	Key No.	Qty.	Description
105	2	M8 x 35mm Button Bolt	114	3	M10 x 25mm Button Screw
106	2	Upper Foam Grip	115	2	M10 x 105 Carriage Bolt
107	2	Lower Foam Grip	116	2	M4 x 58mm Screw
108	1	M4 x 63.5mm Tek Screw	117	2	Incline Motor Bushing
109	2	Wheel	118	1	Right Upper Body Arm
110	4	Wheel Bushing	119	2	Outer Pedal Leg Bushing
111	2	M8 x 19mm Patch Screw	#		Allen Wrench
112	1	Left Upper Body Arm	#		User's Manual
113	2	Torque Washer			

Note: # indicates a non-illustrated part. Specifications are subject to change without notice. See the back cover of this manual for information about ordering replacement parts.

# PART LIST—Model No. HRCCEL59930

R0904A

To locate the parts listed below, see the EXPLODED DRAWING on pages 26 and 27.

Key No.	Qty.	Description	Key No.	Qty.	Description
1	1	Frame	53	1	Reed Switch Bracket
2	1	Upright	54	1	Clamp
3	1	Ramp	55	1	Reed Switch/Wire
4	1	Left Pedal Leg	56	1	Return Spring
5	1	Right Pedal Leg	57	3	M10 Split Washer
6	1	Rear Stabilizer	58	1	Resistance Cable
7	2	Rear Stabilizer Endcap	59	1	Flywheel Axle
8	1	Front Stabilizer	60	2	Flywheel Bearing
9	2	Front Stabilizer Endcap	61	1	Eye Bolt
10	1	Left Pedal	62	1	Adjustment Bracket
11	1	Right Pedal	63	2	M10 x 92mm Carriage Bolt
12	1	Incline Motor	64	2	M6 Washer
13	1	Incline Axle	65	2	M8 x 63mm Bolt Set
14	1	Pivot Axle	66	2	M8 Washer
15	1	Left Side Shield	67	2	M10 x 60mm Button Bolt
16	1	Right Side Shield	68	2	Handlebar Bushing
17	1	Console	69	4	M5 x 25mm Screw
18	2	Flywheel Cover	70	1	Stop Bolt
19	1	Arm Axle	71	2	Flywheel Washer
20	2	Pulse Sensor w/Wire	72	1	M10 x 68mm Button Bolt
21	1	Right Incline Cover	73	2	Pedal Leg Spacer
22	1	Left Incline Cover	74	1	Idler Screw
23	1	Right Handlebar	75	1	Stop Bracket
24	1	Left Handlebar	76	4	M6 x 16mm Patch Screw
25	1	Handlebar Cover	77	2	M6 Nut
26	2	Axle Cover	78	4	M5 x 12mm Bolt
27	1	"J"-Bolt	79	4	M5 Washer
28	2	Pedal Wheel	80	2	M5 x 6mm Screw
29	4	Wheel Bearing	81	6	Upper Body Bushing
30	2	Frame Bushing	82	2	5/16" x 25mm Flange Screw
31	2	Upper Body Leg	83	4	M6 x 48mm Flat Head Screw
32	1	"C" Magnet	84	2	Upper Body Grip
33	4	Pedal Leg Cover	85	4	M8 x 42mm Button Bolt
34	1	Left Crank Arm	86	6	M8 Nylon Jam Nut
35	1	29.5mm Pulley Spacer	87	2	Upper Body Foam Grip
36	1	Flywheel	88	4	M8 Nylon Locknut
37	1	Magnet	89	8	M10 Nylon Locknut
38	1	Pulley/Crank	90	2	Sleeve
39	1	Control Box Cover	91	2	Axle Cover Endcap
40	1	Control Board	92	1	Power Socket
41	1	Control Box	93	1	Power Cord
42	1	Lower Wire Harness	94	4	#8 x 9.5mm Screw
43	1	Plastic Washer	95	1	Upper Wire Harness
44	2	Crank Bearing	96	1	M4 x 16mm Round Head Screw
45	1	Idler	97	7	M5 x 16mm Screw
46	2	Foot	98	16	M4 x 16mm Screw
47	4	Ramp Bushing	99	2	Ramp Spacer
48	2	Ramp Cover	100	4	M5 Nylon Locknut
49	1	Incline Sensor	101	1	Pulse Extension Wire
50	1	Sensor Cover	102	1	Right Crank Arm
51	2	Pedal Leg Bushing	103	1	M6 Nylon Locknut
52	1	Resistance Motor	104	1	Belt