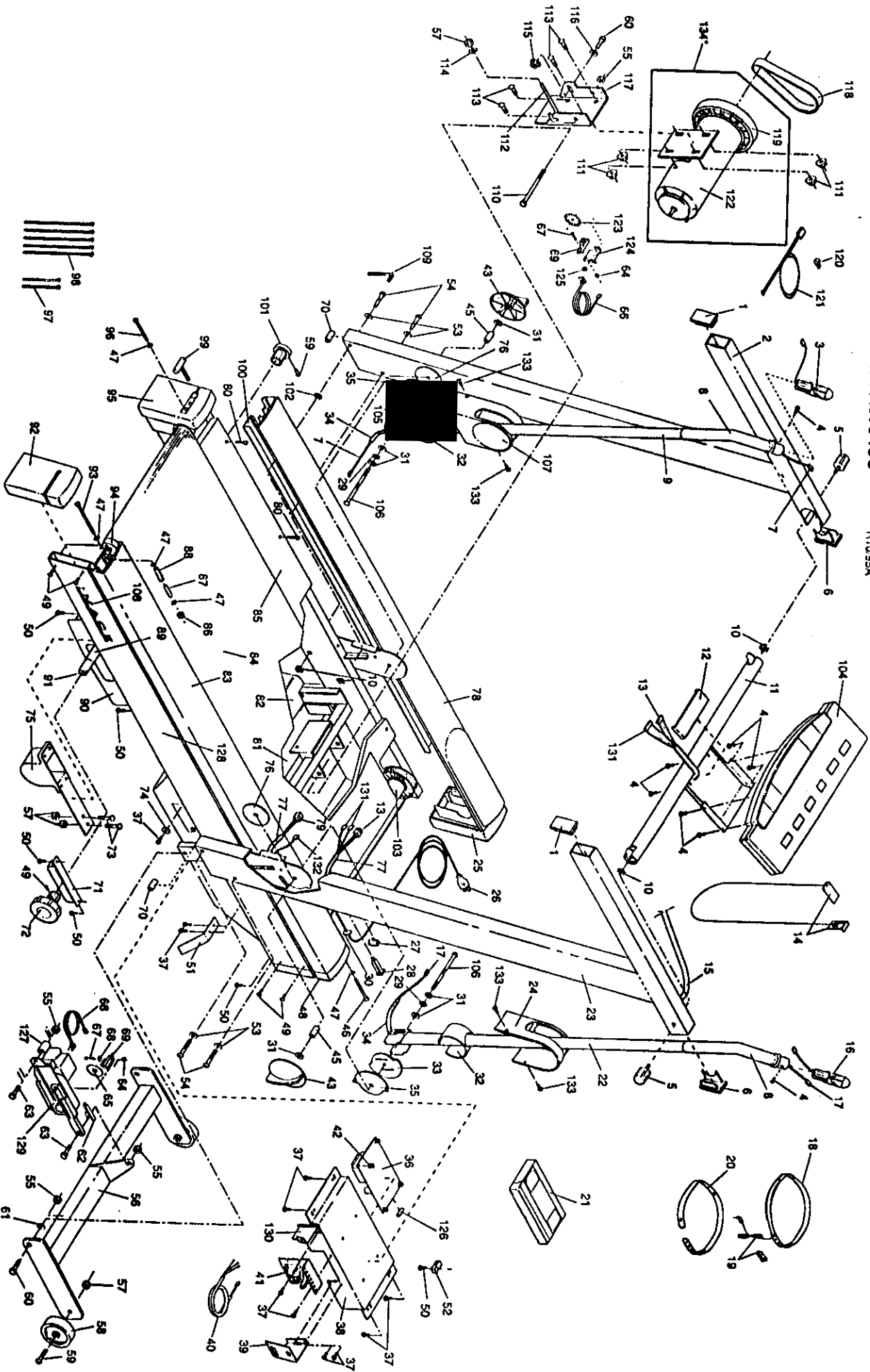


EXPLODED DRAWING—Model No. IMTL10450

R1035A



MODEL NUMBER: IMTL1045
 VERSION: 00
 PRODUCT NAME: IMAGE 10.4
 PRODUCT DESC:

MODEL/PART BOOK LISTING

PAGE: 1
 INI023P1
 RUN DATE: 2/08/97
 RUN TIME: 8:02:33

| KEY NUMBER | PART NUMBER | DESCRIPTION | QUANTITY |
|------------|-------------|---------------------------|----------|
| | . | IMAGE 10.4 TREADMILL | 0 |
| 1 | 124172 | ENDCAP | 2 |
| 2 | 125019 | LEFT UPRIGHT | 1 |
| 3 | 121721 | INCLINE CONTROL HANDLE | 1 |
| 4 | 013141 | SCREW | 8 |
| 5 | 120244 | CONSOLE KNOB | 2 |
| 6 | 124174 | UPRIGHT ENDCAP | 2 |
| 7 | 121485 | INCLINE WIRE HARNESS | 1 |
| 8 | 122382 | UPPER BODY ARM FOAM | 2 |
| 9 | 128028 | LT UPPER BODY ARM W/FOAM* | 1 |
| 10 | 111869 | CAGE NUT | 6 |
| 11 | 124175 | CONSOLE CROSSBAR | 1 |
| 12 | 124173 | WIRE COVER | 1 |
| 13 | 125235 | CONSOLE WIRE HARNESS | 1 |
| 14 | 119038 | SAFETY KEY/CLIP | 1 |
| 15 | 123752 | 24" CABLE LOOM | 1 |
| 16 | 121722 | SPEED CONTROL HANDLE | 1 |
| 17 | 121484 | SPEED WIRE HARNESS | 1 |
| 18 | 126481 | RED HEADBAND | 1 |
| 19 | 127731 | PULSE SENSOR/CLOTHES CLIP | 1 |
| 20 | 126558 | BLUE HEADBAND | 1 |
| 21 | 125236 | VIDEO TAPE | 1 |
| 22 | 128029 | RT UPPER BODY ARM W/FOAM* | 1 |
| 23 | 125017 | RIGHT UPRIGHT | 1 |
| 24 | 125083 | RIGHT RESISTANCE COVER | 1 |
| 25 | 123474 | LEFT FRONT ENDCAP | 1 |
| 26 | 031229 | POWER CORD | 1 |
| 27 | 119163 | ON/OFF SWITCH | 1 |
| 28 | 109382 | CIRCUIT BREAKER | 1 |
| 29 | 106896 | THRUST BEARING | 2 |
| 30 | 019084 | GROMMET | 1 |
| 31 | 102973 | THRUST WASHER | 6 |
| 32 | 125087 | RESISTANCE COVER | 2 |
| 33 | 122947 | RIGHT FRICTION PAD | 1 |
| 34 | 113203 | 6" CABLE LOOM | 2 |
| 35 | 121034 | RESISTANCE PLATE | 2 |
| 36 | 120729 | POWER BOARD W/CLIPS | 1 |
| 37 | 120630 | SMALL SCREW | 16 |
| 38 | 123308 | ELECTRONICS BRACKET | 1 |
| 39 | 119026 | SAFETY COVER BRACKET | 1 |
| 40 | 120311 | POWER BOARD/CNTRLR WIRE | 1 |
| 41 | 120767 | CONTROLLER | 1 |
| 42 | 125819 | PLASTIC STAND-OFF | 4 |
| 43 | 125088 | RESISTANCE CONTROL | 2 |
| 44 | . | PART NOT USED | 0 |
| | . | (#44 SHOWN AS SMALL NUT) | 0 |
| 45 | 121334 | UPRIGHT SPACER | 2 |
| 46 | 112609 | FRONT ROLLER ADJ BOLT | 1 |
| 47 | 014127 | ROLLER ADJUSTMENT WASHER | 5 |
| 48 | 123473 | FRONT RIGHT ENDCAP | 1 |
| 49 | 013028 | ENDCAP SCREW | 8 |
| 50 | 013162 | SAFETY COVER SCREW | 23 |
| 51 | 115468 | BELT GUIDE | 2 |
| 52 | 116927 | TIE BLOCK | 1 |

MODEL NUMBER: IMTL1045
VERSION: 00
PRODUCT NAME: IMAGE 10.4
PRODUCT DESC:

MODEL/PART BOOK LISTING

PAGE 2
INI023P1
RUN DATE: 2/08/97
RUN TIME: 8:02:33

| KEY NUMBER | PART NUMBER | DESCRIPTION | QUANTITY |
|------------|-------------|---------------------------|----------|
| 53 | 014132 | UPRIGHT WASHER | 4 |
| 54 | 125237 | 3/8" X 4" BOLT | 4 |
| 55 | 012149 | INCLINE LEG/MTR TENSN NUT | 5 |
| 56 | 119020 | INCLINE LEG | 1 |
| 57 | 012056 | WHEEL BOLT/J-BOLT NUT | 7 |
| 58 | 052014 | FRONT WHEEL | 2 |
| 59 | 117806 | FRONT WHEEL BOLT | 2 |
| 60 | 013438 | LEG/MOTOR TENSION BOLT | 3 |
| 61 | 124009 | NYLON WASHER | 2 |
| 62 | 116892 | INCLINE MOTOR BRACKET | 1 |
| 63 | 119375 | INCLINE MOTOR BOLT | 2 |
| 64 | 012152 | SMALL NUT | 2 |
| 65 | 109370 | INCLINE OPTIC DISK | 1 |
| 66 | 102633 | OPTIC SWITCH WIRE HRNS | 2 |
| 67 | 102959 | SMALL BOLT | 2 |
| 68 | 014157 | OPTIC SWITCH WASHER | 1 |
| 69 | 102955 | OPTIC SWITCH | 2 |
| 70 | 122332 | UPRIGHT SPACER | 2 |
| 71 | 120483 | CUSHION FOOT INSERT | 2 |
| 72 | 120482 | CUSHION KNOB | 1 |
| 73 | 110926 | CUSHION FOOT BOLT | 4 |
| 74 | 104188 | SAFETY COVER WASHER | 2 |
| 75 | 115046 | CUSHION FOOT | 2 |
| 76 | 125804 | LARGE TENSION SPACER | 2 |
| 77 | 113204 | 12" CABLE LOOM | 3 |
| 78 | 128030 | LEFT FOOT RAIL | 1 |
| 79 | 119769 | 20" WIRE HARNESS | 1 |
| 80 | 119779 | PLATFORM SCREW | 8 |
| 81 | 125012 | FRONT SAFETY COVER | 1 |
| 82 | 120196 | REAR SAFETY COVER | 1 |
| 83 | 125085 | RIGHT FOOT RAIL | 1 |
| 84 | 124684 | WALKING BELT W/FASTENER | 1 |
| 85 | 128031 | WALKING BOARD W/FASTENER | 1 |
| 86 | 012096 | BELT TENSION NUT | 1 |
| 87 | 123470 | SPACER SLEEVE | 1 |
| 88 | 128986 | BELT TENSION SPRING | 1 |
| 89 | 122331 | ROD SLEEVE | 2 |
| 90 | 120918 | CUSHION FOOT COVER | 2 |
| 91 | 120492 | CUSHION FOOT ROD | 1 |
| 92 | 123471 | RIGHT REAR ENDCAP | 1 |
| 93 | 120243 | RT REAR BELT TENSION BOLT | 1 |
| 94 | 120775 | REAR ROLLER | 1 |
| 95 | 123472 | LEFT REAR ENDCAP | 1 |
| 96 | 013206 | LEFT REAR ADJ BOLT | 1 |
| 97 | 016029 | 4" CABLE TIE | 2 |
| 98 | 016057 | 8" CABLE TIE | 10 |
| 99 | 120844 | BELT TOOL, ALLEN WRENCH | 1 |
| 100 | 122202 | FOOT RAIL BKT W/FASTENER | 2 |
| 101 | 128068 | ROD ENDCAP | 1 |
| 102 | 014117 | STAR WASHER | 2 |
| 103 | 128032 | FRONT ROLLER/PULLEY * | 1 |
| 104 | 128033 | CONSOLE | 1 |
| 105 | 122948 | LEFT FRICTION PAD | 1 |
| 106 | 126480 | RESISTANCE BOLT | 2 |

MODEL NUMBER: IMTL1045
 VERSION: 00
 PRODUCT NAME: IMAGE 10.4
 PRODUCT DESC:

MODEL/PART BOOK LISTING

PAGE 3
 INI023P1
 RUN DATE: 2/08/97
 RUN TIME: 8:02:33

| KEY NUMBER | PART NUMBER | DESCRIPTION | QUANTITY |
|------------|-------------|---------------------------|----------|
| 107 | 125082 | LEFT RESISTANCE COVER | 1 |
| 108 | 123530 | IMAGE LOGO | 1 |
| 109 | 045017 | 7/32" ALLEN WRENCH | 1 |
| 110 | 107503 | MOTOR PIVOT BOLT | 1 |
| 111 | 105477 | MOTOR NUT | 4 |
| 112 | 103855 | J-BOLT | 1 |
| 113 | 013445 | MOTOR BOLT | 4 |
| 114 | 014041 | J-BOLT WASHER | 1 |
| 115 | 120867 | MOTOR TENSION NUT | 1 |
| 116 | 122812 | MOTOR TENSION WASHER | 1 |
| 117 | 125243 | MOTOR BRACKET * | 1 |
| 118 | 106939 | MOTOR BELT | 1 |
| 119 | 125014 | PULLEY/FLYWHEEL/FAN | 1 |
| 120 | 124934 | STRAIN RELIEF | 1 |
| 121 | 124933 | THERMAL SWITCH | 1 |
| 122 | 124716 | MOTOR * | 1 |
| 123 | 129654 | OPTIC SPEED DISK | 1 |
| 124 | 120653 | OPTIC SWITCH BRACKET | 1 |
| 125 | 122125 | OPTIC SWITCH BRACKET NUT | 1 |
| 126 | . | PART NOT USED | 1 |
| | . | (#126 SHOWN PWR BRD FUSE) | 0 |
| 127 | 114270 | INCLINE MOTOR SPACER | 1 |
| 128 | NSP | FRAME | 1 |
| 129 | 123478 | INCLINE MOTOR | 1 |
| 130 | 119416 | BRACKET | 1 |
| 131 | 122381 | INCLINE/SPEED WIRE HRNS | 1 |
| 132 | . | PART NOT USED | 0 |
| | . | (#132 SHOWN AS EXT WIRE) | 0 |
| 133 | 013322 | COVER SCREW | 4 |
| 134 | 128034 | MOTOR/PULY/FLWH/FAN * | 1 |
| . | . | NON-ILLUSTRATED PARTS | 0 |
| # | 129654 | SPEED ENCODER | 1 |
| # | 125086 | WIRE DIAGRAM | 1 |
| # | 103825 | 20" BLACK WIRE, 2F | 1 |
| # | 101799 | 9" BLACK WIRE, M/F | 1 |
| # | 109407 | 4" BLACK WIRE, 2F | 1 |
| # | 103823 | 14" WHITE WIRE, M/F | 1 |
| # | 102246 | 8" WHITE WIRE, 2F | 1 |
| # | 112083 | 8" BLUE WIRE, 2F | 1 |
| # | 118204 | 8" BLUE WIRE, M/F | 1 |
| # | 102634 | 8" GREEN GOUND WIRE | 1 |
| # | 118201 | 8" RED WIRE, M/F | 1 |
| . | . | NOTE: A BATTERY WAS | 0 |
| . | . | LISTED IN OM AS A | 0 |
| . | . | NON-ILLUSTRATED PART, IT | 0 |
| . | . | WAS NOT USED. | 0 |
| # | 014063 | CUSHION FOOT COVER WASHER | 4 |
| # | 115872 | STRAIN RELIEF | 1 |
| # | 125092 | USER'S MANUAL | 1 |
| # | 125091 | HARDWARE KIT | 1 |
| . | . | 125092 USER'S MANUAL | 1 |
| . | . | 125236 VIDEO | 1 |
| . | . | 126482 PULSE CLIP | 1 |
| . | . | 126481 RED/BLK HEADBAND | 1 |

MODEL NUMBER: IMTL1045
VERSION: 00
PRODUCT NAME: IMAGE 10.4
PRODUCT DESC:

MODEL/PART BOOK LISTING

PAGE 4
INI023P1
RUN DATE: 2/08/97
RUN TIME: 8:02:33

| KEY NUMBER | PART NUMBER | DESCRIPTION | QUANTITY |
|------------|-------------|--------------------------|----------|
| . | . | 126558 BLUE/BLK HEADBAND | 1 |
| . | . | 120244 CONSOLE KNOB | 1 |
| . | . | 120844 3/16" WRENCH | 1 |
| . | . | 045017 7/32" WRENCH | 1 |
| . | . | 122332 UPRIGHT SPACER | 2 |
| . | . | 125237 SCREW, 4" | 4 |
| . | . | 014132 WASHER, 3/8" | 4 |
| . | . | 119038 SAFETY KEY | 1 |