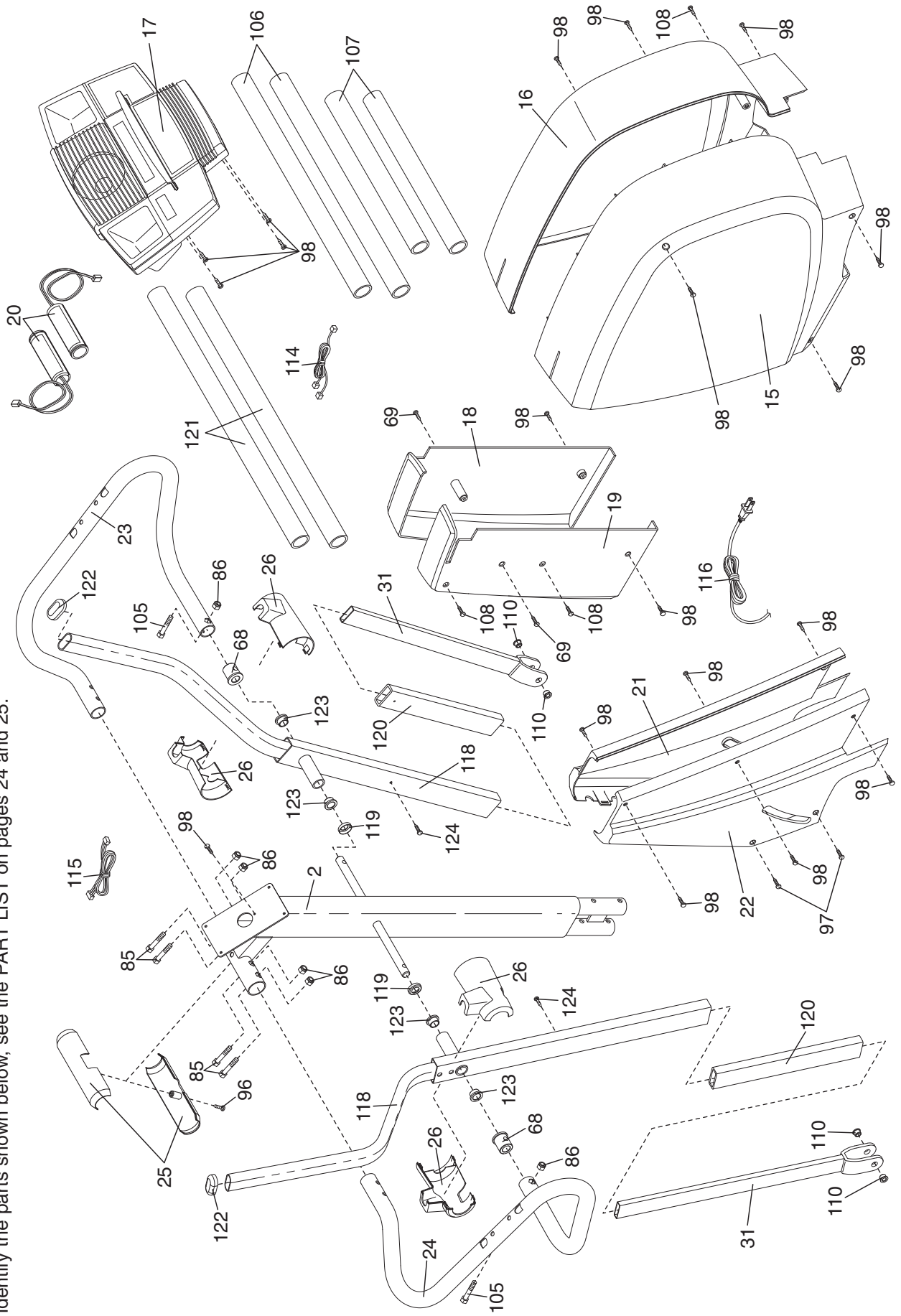


EXPLODED DRAWING—Model No. NCCCEL09940

R0604A

To identify the parts shown below, see the PART LIST on pages 24 and 25.



Key No.	Qty.	Description	Key No.	Qty.	Description
105	2	M8 x 38mm Button Bolt	118	2	Upper Body Arm
106	2	Upper Foam Grip	119	2	Weld Spacer
107	2	Lower Foam Grip	120	2	Sleeve
108	3	M4 x 25mm Tek Screw	121	2	Upper Body Foam Grip
109	2	7.6mm Spacer	122	2	Upper Body Endcap
110	4	Wheel Bushing	123	4	Upper Body Bushing
111	2	M8 x 19mm Patch Screw	124	2	M5 x 5mm Screw
112	2	Wheel	125	2	M4 x 19mm Round Head Screw
113	1	Belt	126	1	Stop Bracket
114	1	Pulse Extension Wire	127	1	Nylon Zip Tie
115	1	Upper Wire Harness	#		Allen Wrench
116	1	Power Cord	#		User's Manual
117	1	Power Socket			

Note: # indicates a non-illustrated part. Specifications are subject to change without notice. See the back cover of this manual for information about ordering replacement parts.

PART LIST—Model No. NCCEL09940

R0604A

To locate the parts listed below, see the EXPLODED DRAWING on page 26 and 27.

Key No.	Qty.	Description	Key No.	Qty.	Description
1	1	Frame	53	1	Reed Switch Bracket
2	1	Upright	54	1	Clamp
3	1	Ramp	55	1	Reed Switch/Wire
4	1	Left Pedal Leg	56	1	Return Spring
5	1	Right Pedal Leg	57	1	Guide Rod
6	1	Rear Stabilizer	58	1	Resistance Cable
7	1	Rear Stabilizer Cover	59	1	Flywheel Axle
8	1	Front Stabilizer	60	2	Flywheel Bearing
9	1	Front Stabilizer Cover	61	2	Eye Bolt
10	1	Left Pedal	62	2	Adjustment Bracket
11	1	Right Pedal	63	2	M8 x 47mm Button Screw
12	1	Incline Motor	64	2	M6 Washer
13	1	Incline Axle	65	2	M8 x 79mm Bolt Set
14	1	Pivot Axle	66	2	M8 Washer
15	1	Left Side Shield	67	2	M10 x 50mm Bolt Set
16	1	Right Side Shield	68	2	Handlebar Bushing
17	1	Console	69	2	M4 x 16mm Round Head Screw
18	1	Right Flywheel Cover	70	2	M10 x 108mm Button Screw
19	1	Left Flywheel Cover	71	1	M8 Tek Washer
20	2	Pulse Sensor w/Wire	72	1	M11 x 40mm Bolt Set
21	1	Right Incline Cover	73	2	M10 Split Washer
22	1	Left Incline Cover	74	1	M8 x 25mm Button Bolt
23	1	Right Handlebar	75	1	M10 x 19mm Button Bolt
24	1	Left Handlebar	76	4	M6 x 16mm Patch Screw
25	1	Upper Handlebar Cover	77	4	M5 Nut
26	2	Handlebar Cover	78	4	M5 x 16mm Bolt
27	1	Frame Cover	79	4	M5 Washer
28	2	Pedal Wheel	80	2	M6 x 18mm Bolt
29	4	Wheel Bearing	81	1	M6 x 25mm Bolt
30	2	Frame Bushing	82	2	5/16" x 25mm Flange Screw
31	2	Upper Body Leg	83	4	M8 x 54mm Button Screw
32	1	"C" Magnet	84	8	M8 x 44mm Button Screw
33	1	Magnet Bracket	85	4	M8 x 41mm Button Bolt
34	1	Left Crank Arm	86	6	M8 Jam Nut
35	2	29.5mm Pulley Spacer	87	8	M4 x 38mm Screw
36	1	Flywheel	88	3	M8 Nylon Locknut
37	1	Magnet	89	1	M10 Nylon Locknut
38	1	Pulley	90	3	M6 Nut
39	1	Control Box Cover	91	2	M6 Nylon Locknut
40	1	Control Board	92	2	Snap Ring
41	1	Control Box	93	2	M8 x 54mm Button Screw
42	1	Lower Wire Harness	94	4	#8 x 9.5mm Screw
43	1	Crank	95	4	M4 x 19mm Screw
44	2	Crank Bearing	96	1	M4 x 12mm Round Head Screw
45	1	Idler	97	2	M4 x 25mm Screw
46	4	Foot	98	24	M4 x 16mm Screw
47	4	Ramp Bushing	99	2	Ramp Spacer
48	2	Ramp Cover	100	4	M5 Nylon Locknut
49	1	Incline Sensor	101	2	31.5mm Pulley Spacer
50	1	Sensor Cover	102	1	Right Crank Arm
51	4	Pedal Leg Bushing	103	1	Flywheel Spacer
52	1	Resistance Motor	104	2	Support Plate