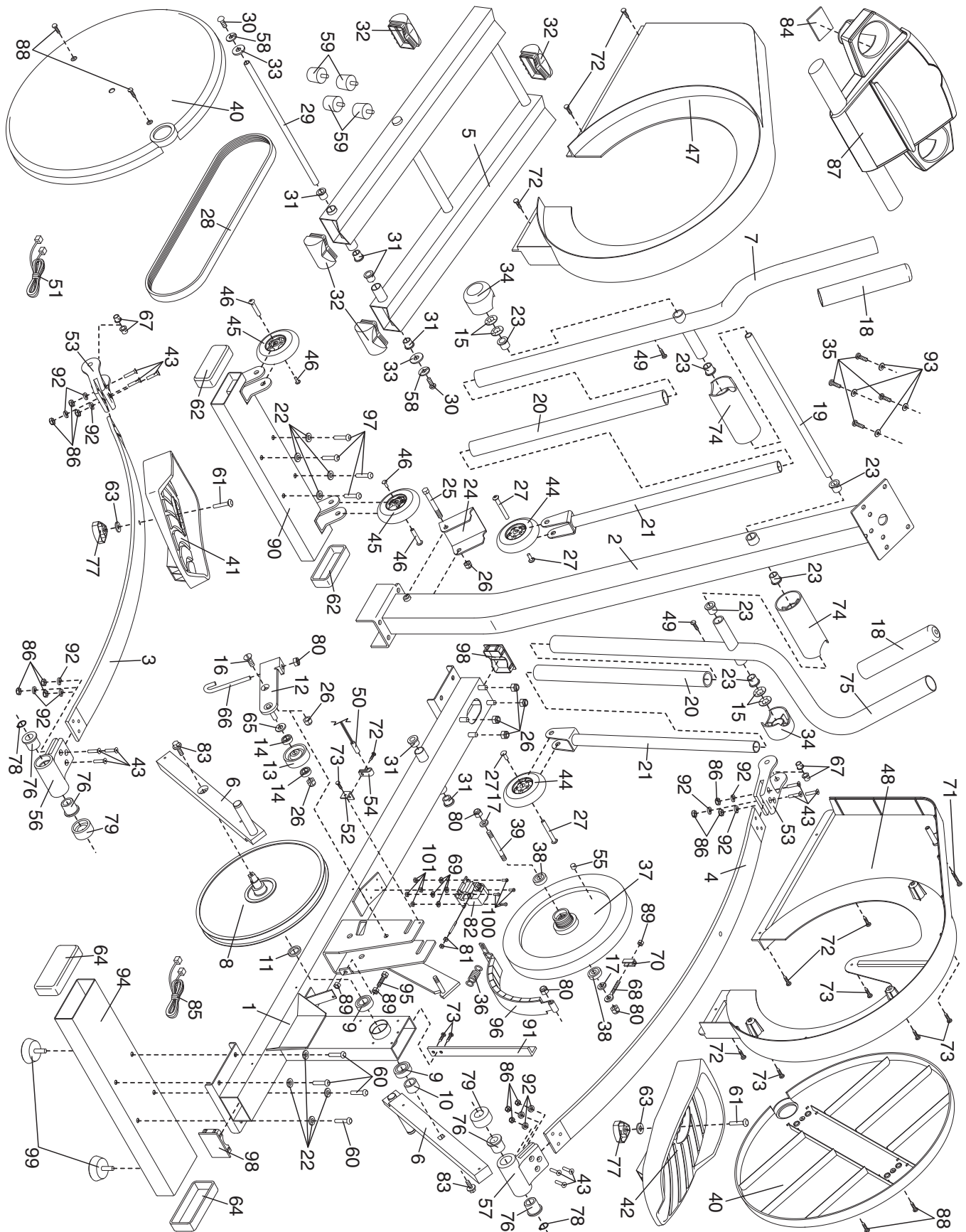


EXPLODED DRAWING—Model No. NTCCEL59011

R0602A



PART LIST—Model No. NTCCEL59011

R0602A

Key No.	Qty.	Description	Key No.	Qty.	Description
1	1	Frame	54	1	Reed Switch Clamp
2	1	Upright	55	1	Magnet
3	1	Left Spring Arm	56	1	Left Rear Spring Bracket
4	1	Right Spring Arm	57	1	Right Rear Spring Bracket
5	1	Incline Frame	58	2	M8 Split Washer
6	2	Crank Arm	59	4	Bump-on
7	1	Left Upper Body Arm	60	4	M10 x 56mm Button Screw
8	1	Large Pulley	61	2	M10 x 33mm Carriage Bolt
9	2	Frame Bearing	62	2	Front Stabilizer Endcap
10	1	Plastic Crank Spacer	63	2	M10 Washer
11	1	Flat Delrin Washer	64	2	Rear Stabilizer Endcap
12	1	Idler Bracket	65	1	M10.3 Washer
13	1	Pulley	66	1	“J” Bolt
14	2	Idler Bearing	67	4	Spring Bracket Bushing
15	4	Push Nut	68	1	Eyebolt
16	1	M10 x 25mm Flat Head Bolt	69	4	M5 Washer
17	2	M8.5 Flat Washer	70	1	Adjustment Bracket
18	2	Foam Grip	71	1	M4 x 63.5mm Screw
19	1	Arm Axle	72	7	M4 x 16mm Screw
20	2	Plastic Arm Sleeve	73	7	M5 x 16mm Screw
21	2	Chrome Tube	74	2	Axle Cover
22	8	M10 Split Washer	75	1	Right Upper Body Arm
23	6	Arm Bushing	76	4	Pedal Bushing
24	1	Incline Bracket	77	2	Adjustment Knob
25	1	M10 x 85mm Bolt	78	2	Snap Ring
26	7	M10 Nylon Locknut	79	2	Spring Spacer
27	2	M10 Union Bolt Set	80	4	M8 Nylon Locknut
28	1	Belt	81	2	M6 Nut
29	1	Incline Axle	82	1	Resistance Motor
30	2	M8 x 19mm Screw	83	2	Flange Screw
31	6	Incline Bushing	84	1	Battery Cover
32	4	Incline Frame Cap	85	1	Wire Harness
33	2	M8 Washer	86	12	M6 Nylon Locknut
34	2	Pivot Axle Cap	87	1	Console
35	4	Console Screw	88	4	M5 x 25mm Screw
36	1	Spring	89	3	Stop Nut
37	1	Flywheel	90	1	Front Stabilizer
38	2	Flywheel Bearing	91	1	Side Shield Support
39	1	Flywheel Axle	92	12	M6 Split Washer
40	2	Pedal Disk	93	4	Console Washer
41	1	Left Pedal	94	1	Rear Stabilizer
42	1	Right Pedal	95	1	M6 x 38mm Bolt
43	12	M6 x 33mm Flat Head Screw	96	1	“C” Magnet
44	2	Incline Wheel	97	4	M10 x 43mm Button Screw
45	2	Stabilizer Wheel	98	2	Frame Endcap
46	2	M8 Union Bolt Set	99	2	Leveling Foot
47	1	Left Side Shield	100	4	M5 x 12mm Screw
48	1	Right Side Shield	101	4	M5 Nylon Locknut
49	2	M5 x 6mm Screw	#	1	Grease
50	1	Reed Switch/Wire	#	1	Teflon® Lubricant
51	1	Extension Wire Harness	#	1	Push Nut Tool
52	1	Reed Switch Bracket	#	2	Allen Wrench
53	2	Spring Bracket	#	1	User’s Manual

Note: # indicates a non-illustrated part. Specifications are subject to change without notice. See the back cover of this manual for information about ordering replacement parts.