

PART LIST—Model No. PFEL07907.0

R0907B

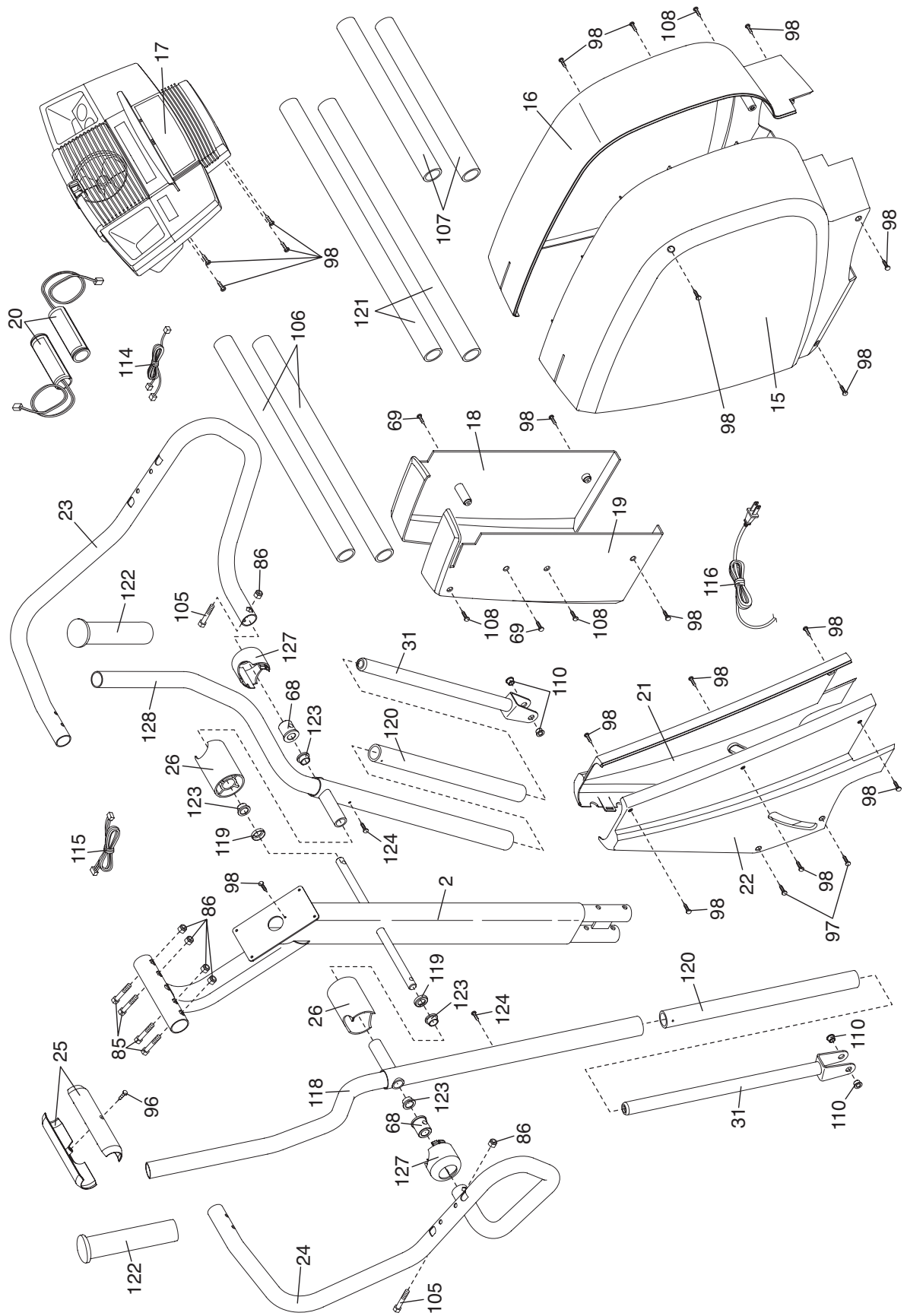
Key No.	Qty.	Description	Key No.	Qty.	Description
1	1	Frame	51	4	Pedal Leg Bushing
2	1	Upright	52	1	Resistance Motor
3	1	Ramp	53	1	Reed Switch Bracket
4	1	Left Pedal Leg	54	1	Clamp
5	1	Right Pedal Leg	55	1	Reed Switch/Wire
6	1	Rear Stabilizer	56	1	Return Spring
7	1	Rear Stabilizer Cover	57	1	Guide Rod
8	1	Front Stabilizer	58	1	Resistance Cable
9	1	Front Stabilizer Cover	59	1	Flywheel Axle
10	1	Left Pedal	60	2	Flywheel Bearing
11	1	Right Pedal	61	2	Eye Bolt
12	1	Incline Motor	62	2	Adjustment Bracket
13	1	Incline Axle	63	2	M8 x 47mm Button Screw
14	1	Pivot Axle	64	2	M6 Washer
15	1	Left Side Shield	65	2	M8 x 79mm Bolt Set
16	1	Right Side Shield	66	2	M8 Washer
17	1	Console	67	2	M10 x 50mm Bolt Set
18	1	Right Flywheel Cover	68	2	Handlebar Bushing
19	1	Left Flywheel Cover	69	2	M4 x 16mm Round Head Screw
20	2	Pulse Sensor w/Wire	70	2	M10 x 108mm Button Screw
21	1	Right Incline Cover	71	1	M8 Tek Washer
22	1	Left Incline Cover	72	1	M11 x 40mm Bolt Set
23	1	Right Handlebar	73	2	M10 Split Washer
24	1	Left Handlebar	74	1	M8 x 25mm Button Bolt
25	1	Upper Handlebar Cover	75	1	M10 x 19mm Button Bolt
26	2	Handlebar Cover	76	4	M6 x 16mm Patch Screw
27	1	Frame Cover	77	4	M5 Nut
28	2	Pedal Wheel	78	4	M5 x 16mm Bolt
29	4	Wheel Bearing	79	4	M5 Washer
30	2	Frame Bushing	80	2	M6 x 18mm Bolt
31	2	Upper Body Leg	81	1	M6 x 25mm Bolt
32	1	"C" Magnet	82	2	5/16" x 25mm Flange Screw
33	1	Magnet Bracket	83	4	M8 x 54mm Button Screw
34	1	Left Crank Arm	84	8	M8 x 44mm Button Screw
35	2	29.5mm Pulley Spacer	85	4	M8 x 42mm Button Bolt
36	1	Flywheel	86	6	M8 Jam Nut
37	1	Magnet	87	8	M4 x 38mm Screw
38	1	Pulley	88	3	M8 Nylon Locknut
39	1	Control Box Cover	89	1	M10 Nylon Locknut
40	1	Control Board	90	4	M6 Nut
41	1	Control Box	91	2	M6 Nylon Locknut
42	1	Lower Wire Harness	92	2	Snap Ring
43	1	Crank	93	2	M8 x 56mm Button Screw
44	2	Crank Bearing	94	4	#8 x 9.5mm Screw
45	1	Idler	95	4	M4 x 19mm Screw
46	4	Foot	96	1	M4 x 12mm Round Head Screw
47	4	Ramp Bushing	97	2	M4 x 25mm Screw
48	2	Ramp Cover	98	24	M4 x 16mm Screw
49	1	Incline Sensor	99	2	Ramp Spacer
50	1	Sensor Cover	100	4	M5 Nylon Locknut

Key No.	Qty.	Description	Key No.	Qty.	Description
101	2	31.5mm Pulley Spacer	117	1	Power Socket
102	1	Right Crank Arm	118	1	Left Upper Body Arm
103	1	Flywheel Spacer	119	2	Weld Spacer
104	2	Support Plate	120	2	Sleeve
105	2	M8 x 38mm Button Bolt	121	2	Upper Body Foam Grip
106	2	Upper Foam Grip	122	2	Upper Body Endcap
107	2	Lower Foam Grip	123	4	Upper Body Bushing
108	3	M4 x 25mm Tek Screw	124	2	M5 x 6mm Screw
109	2	7.6mm Spacer	125	2	#8 x 19mm Round Head Screw
110	4	Wheel Bushing	126	1	Stop Bracket
111	2	M8 x 19mm Patch Screw	127	2	Handlebar Cap
112	2	Wheel	128	1	Right Upper Body Arm
113	1	Belt	129	1	Nylon Zip Tie
114	1	Pulse Extension Wire	130	4	M8 Split Washer
115	1	Upper Wire Harness	*	–	Hex Key
116	1	Power Cord	*	–	User's Manual

Note: Specifications are subject to change without notice. See the back cover of this manual for information about ordering replacement parts. *These parts are not illustrated.

EXPLODED DRAWING A—Model No. PFEL07907.0

R0907B



EXPLODED DRAWING B—Model No. PFEL07907.0

R0907B

