

PART LIST—Model No. PFEL09907.0

R0907A

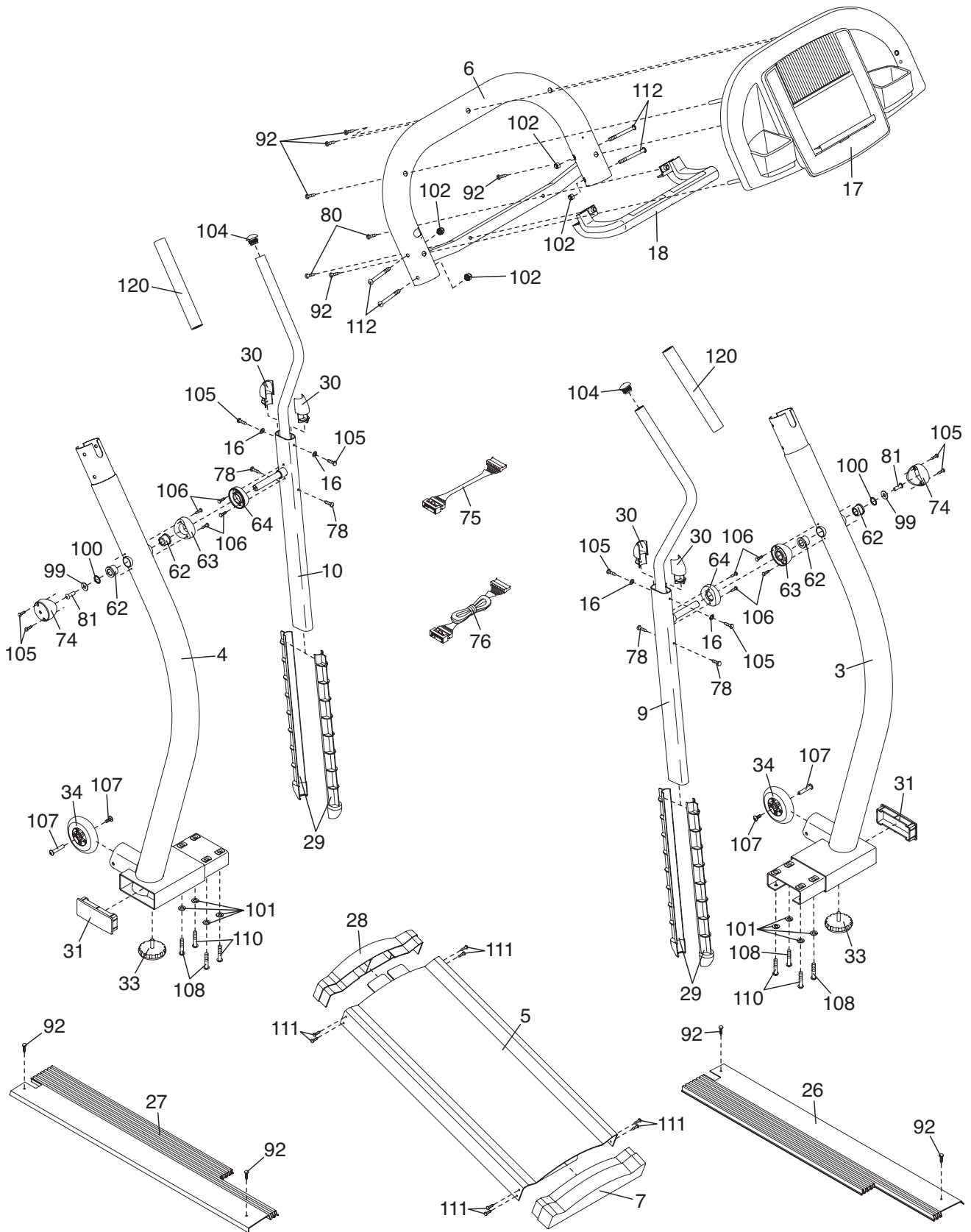
Key No.	Qty.	Description	Key No.	Qty.	Description
1	1	Frame	48	1	Power Board Cover
2	1	Rear Stabilizer	49	1	Power Board
3	1	Right Upright	50	1	Power Board Bracket
4	1	Left Upright	51	1	Idler Pulley Bracket
5	1	Ramp	52	1	Reed Switch Clamp
6	1	Console Frame	53	1	Reed Switch
7	1	Lower Ramp Cap	54	2	Pillow Block Set
8	1	Power Cord	55	2	Bearing Block Set
9	1	Right Handlebar	56	4	Crank Arm Bushing
10	1	Left Handlebar	57	4	Pulley Spacer
11	1	Right Pedal Arm	58	1	Crank Spacer
12	1	Left Pedal Arm	59	4	Ramp Bushing
13	1	Right Pedal	60	4	Incline Motor Spacer
14	1	Left Pedal	61	4	Pedal Wheel Bushing
15	2	Pivot Shaft	62	4	Pivot Bushing
16	4	M4 Star Washer	63	2	Inner Upright Cover
17	1	Console	64	2	Pivot Arm Cover
18	1	Hand Grip Pulse Sensor	65	1	Magnet
19	1	Rear Base Plate	66	1	Wedge
20	1	Front Base Plate	67	1	Incline Reed Switch
21	1	Right Rear Side Shield	68	1	Power Receptacle
22	1	Left Rear Side Shield	69	1	Belt
23	1	Right Front Side Shield	70	1	Grommet
24	1	Left Front Side Shield	71	2	Hairpin
25	1	Front Cover	72	2	Snap Ring
26	1	Right Foot Rail	73	1	Flywheel Spacer
27	1	Left Foot Rail	74	2	Outer Upright Cover
28	1	Upper Ramp Cap	75	1	Upper Wire Harness
29	4	Pivot Shaft Sleeve	76	1	Extension Wire Harness
30	4	Handlebar Cover	77	1	Lower Wire Harness
31	4	Frame Endcap	78	4	M4 x 14mm Screw
32	2	Frame Cushion	79	4	M5 Nylon Locknut
33	4	Leveling Foot	80	2	M8 x 45mm Button Screw
34	2	Wheel	81	4	M8 x 25mm Button Screw
35	2	Pedal Wheel	82	4	M5 Washer
36	1	Flywheel	83	2	Flange Screw
37	1	Pulley	84	2	M8 x 52mm Button Screw
38	1	Right Crank Arm	85	2	M8 x 41mm Button Screw
39	1	Left Crank Arm	86	2	Large Wave Washer
40	1	Incline Axle	87	2	M8 x 16mm Washer
41	1	Pulley Axle	88	6	M8 x 23mm Flat Head Screw
42	1	Lift Motor	89	1	M8 x 57mm Screw
43	1	“C” Magnet	90	1	M6 x 38mm Bolt
44	1	Spring	91	1	Magnet Bracket Bolt
45	1	Small Pulley	92	36	M4 x 16mm Screw
46	1	Idler Pulley	93	1	M6 x 8mm Button Screw
47	1	Resistance Motor	94	7	M8 Washer

Key No.	Qty.	Description	Key No.	Qty.	Description
95	2	M8 x 25mm Washer	112	4	M8 x 76mm Button Bolt
96	3	M8 x 9.5mm Screw	113	2	M8 x 20mm Button Screw
97	5	M5 x 16mm Bolt	114	2	M6 Nut
98	2	M8 x 23mm Washer	115	4	M6 x 10mm Button Screw
99	4	M8 x 28mm Washer	116	5	M4 x 19mm Screw
100	2	Wave Washer	117	2	M4 x 30mm Screw
101	12	M8 Split Washer	118	1	Short Clevis Pin
102	13	M8 Nylon Locknut	119	1	Long Clevis Pin
103	2	Large Snap Ring	120	2	Foam Grip
104	2	Handlebar Endcap	121	1	Left Pedal Insert
105	8	M4 x 25mm Screw	122	1	Right Pedal Insert
106	8	M4 x 16mm Round Head Screw	123	1	Set Screw
107	2	Bolt Set	*	–	Hex Key
108	4	M8 x 56mm Button Screw	*	–	Grease Packet
109	1	Reed Switch Plate	*	–	High-temperature Lubricant
110	8	M8 x 68mm Button Screw	*	–	User's Manual
111	8	M4 x 12mm Screw			

Note: Specifications are subject to change without notice. See the back cover of this manual for information about ordering replacement parts. *These parts are not illustrated.

EXPLODED DRAWING A—Model No. PFEL09907.0

R0907A



EXPLODED DRAWING B—Model No. PFEL09907.0

R0907A

