

# PART LIST—Model No. PFEVEL5985.0

R0106A

To locate the parts listed below, see the EXPLODED DRAWING on pages 26 and 27.

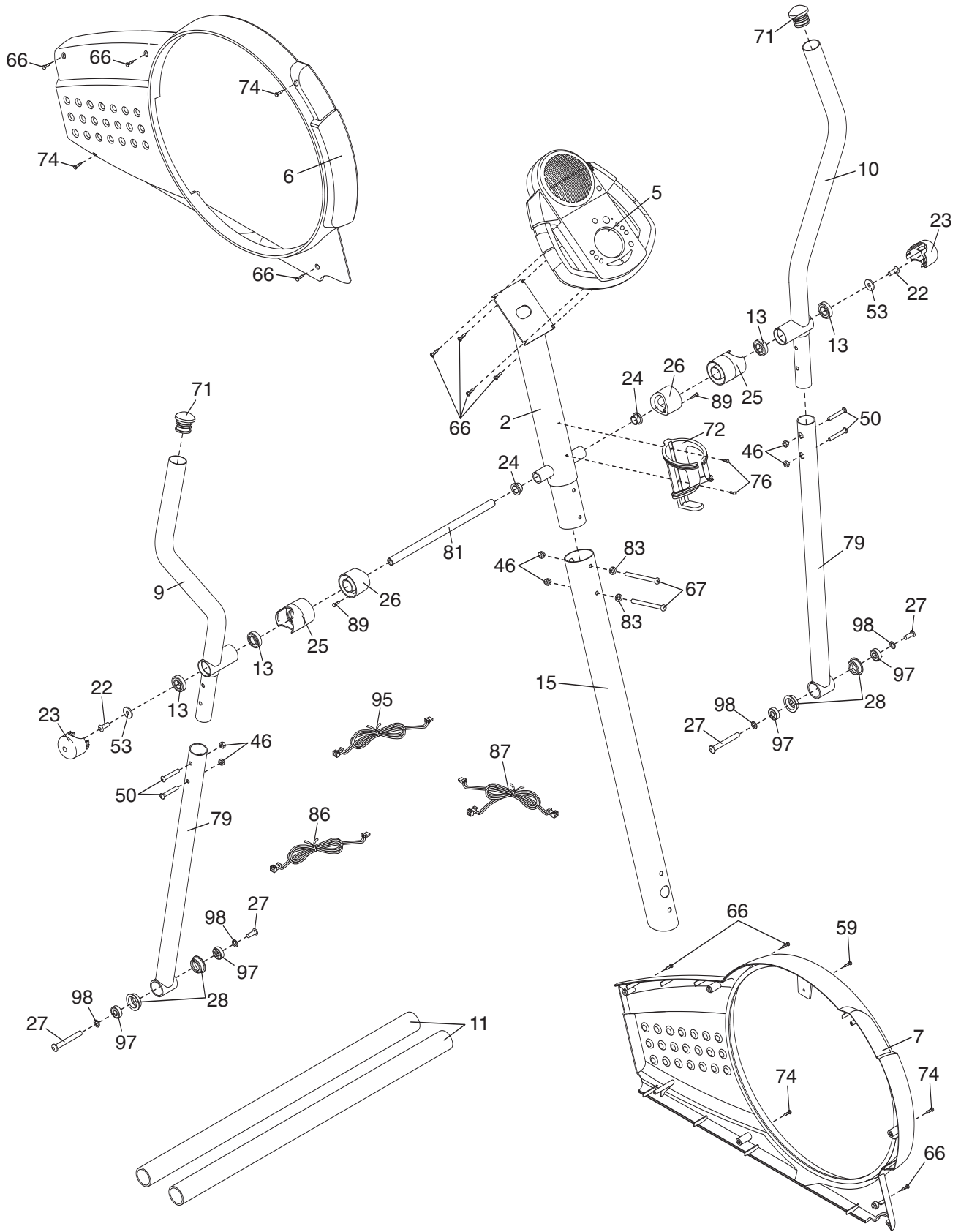
Key No.	Qty.	Description	Key No.	Qty.	Description
1	1	Frame	49	1	M6 x 8mm Screw
2	1	Upright	50	4	M8 x 45mm Button Bolt
3	1	Front Stabiliser	51	1	Return Spring
4	1	Rear Stabiliser	52	1	Magnet Guide
5	1	Console	53	2	M8 Washer
6	1	Left Side Shield	54	1	"C" Magnet
7	1	Right Side Shield	55	1	Motor
8	2	Pedal Disk	56	1	Belt
9	1	Left Handlebar	57	2	Hub
10	1	Right Handlebar	58	1	Small Snap Ring
11	2	Foam Grip	59	1	M5 x 40mm Screw
12	1	Left Pedal	60	2	M6 Nut
13	4	R10 Bearing	61	4	M5 Nylon Locknut
14	1	Left Pedal Arm	62	4	M5 x 12mm Bolt
15	1	Mast	63	2	M10 x 83mm Button Screw
16	2	Pedal Bracket	64	1	M8 x 41mm Bolt
17	2	Adjustment Pin	65	2	Adjustment Bracket Screw
18	4	R18 Bearing	66	12	M4 x 16mm Screw
19	2	Adjustment Spring	67	2	M8 x 70mm Button Bolt
20	2	Adjustment Bracket	68	3	M6 x 13mm Button Screw
21	2	Snap Ring	69	1	Reed Switch Clamp
22	2	M8 x 25mm Patch Screw	70	1	Idler Screw
23	2	Handlebar Cap	71	2	Handlebar Endcap
24	2	Handlebar Bushing	72	1	Water Bottle Holder
25	2	Handlebar Spacer	73	1	M6 x 16mm Screw
26	2	Upright Spacer	74	4	M4 x 38mm Screw
27	2	M10 x 59mm Bolt Set	75	1	Right Pedal Arm
28	4	Leg Bushing	76	2	M4 x 22mm Screw
29	4	M10 Nylon Locknut	77	1	Reed Switch
30	1	Pillow Block	78	1	Reed Switch Bracket
31	1	Idler Block	79	2	Handlebar Leg
32	2	Wheel	80	2	Levelling Foot
33	2	M10 x 45mm Button Bolt	81	1	Pivot Axle
34	2	M10 x 75mm Carriage Bolt	82	8	Cover Screw
35	2	Front Stabiliser Endcap	83	6	M8 Split Washer
36	1	Left Crank Arm	84	4	M8 x 53mm Button Screw
37	1	Idler Bracket	85	1	Resistance Cable
38	1	Right Crank Arm	86	1	Upper Wire Harness
39	1	Crank	87	1	Lower Wire Harness
40	2	Crank Bearing	88	1	Right Pedal
41	1	Flywheel	89	2	M3 x 12mm Screw
42	4	Large Snap Ring	90	4	Motor Washer
43	1	Magnet	91	4	M8 x 16mm Button Screw
44	1	Flywheel Spacer	92	1	M6 x 13mm Flat Head Screw
45	2	Adjustment Knob	93	2	M6 Washer
46	7	M8 Nylon Locknut	94	2	M10 Split Washer
47	2	Crank Screw	95	1	Extension Wire Harness
48	2	Hub Cover	96	2	Pedal Arm Endcap

Key No.	Qty.	Description	Key No.	Qty.	Description
97	4	6000Z Bearing	103	1	Idler Axle
98	4	M10 Washer	104	8	M8 Jamnut
99	2	Rear Stabiliser Endcap	#	2	Hex Key
100	2	Pillow Block Retainer	#	1	Grease
101	1	Idler Spacer	#	1	User's Manual
102	1	Idler Pulley			

Note: “#” indicates a non-illustrated part. Specifications are subject to change without notice. See the back cover of this manual for information about ordering replacement parts.

# EXPLODED DRAWING A—Model No. PFEVEL5985.0

R0106A



# EXPLODED DRAWING B—Model No. PFEVEL5985.0

R0106A

