

# PART LIST—Model No. PFEVEL7985.0

R1005A

To locate the parts shown below, see the EXPLODED DRAWING on pages 26 and 27.

Key No.	Qty.	Description	Key No.	Qty.	Description
1	1	Frame	51	4	M6 x 18mm Bolt
2	1	Upright	52	1	“C” Magnet Bracket
3	1	Front Stabilizer	53	2	M8 Large Washer
4	1	Rear Stabilizer	54	1	“C” Magnet
5	1	Console	55	1	Motor
6	1	Left Side Shield	56	1	Belt
7	1	Right Side Shield	57	2	M6 x 20mm Button Screw
8	2	Pedal Disk	58	1	Ramp Cover
9	1	Left Handlebar	59	1	Ramp
10	1	Right Handlebar	60	4	M6 Nut
11	2	Foam Grip	61	4	M5 Nylon Locknut
12	1	Right Pedal	62	4	M5 x 12mm Bolt
13	1	Left Pedal	63	1	M10 x 87mm Button Screw
14	1	Left Pedal Arm	64	2	M4 x 6mm Screw
15	1	Right Pedal Arm	65	2	M8 x 15mm Button Screw
16	2	Adjustment Knob	66	19	M4 x 16mm Screw
17	2	Pedal Leg Sleeve	67	4	M4 x 25mm Screw
18	2	Ramp Shield	68	1	Right Front Endcap
19	1	Control Box with Lid	69	1	Reed Switch Clamp
20	2	M8 x 50mm Button Screw	70	1	M10 Split Washer
21	2	Snap Ring	71	2	Handlebar Endcap
22	10	M8 x 25mm Patch Screw	72	2	Leveling Foot
23	2	Handlebar Cap	73	1	M5 x 16mm Screw
24	2	Pivot Bushing	74	2	M5 x 6mm Screw
25	2	Handlebar Spacer	75	2	M6 Eyebolt
26	2	Upright Spacer	76	1	Spring
27	2	Bolt Set	77	1	Reed Switch
28	4	Handlebar Leg Bushing	78	1	Reed Switch Bracket
29	2	Ramp Wheel	79	2	Handlebar Leg
30	1	Upright Bushing	80	1	Side Shield Cover
31	1	Left Front Endcap	81	1	“U” Bracket
32	2	Wheel	82	1	Incline Motor
33	2	M6 x 72mm Button Screw	83	1	Frame Spacer
34	4	M10 x 112mm Carriage Bolt	84	4	M4 x 12mm Round Head Screw
35	2	Rear Stabilizer Endcap	85	1	Adjustment Cable Assembly
36	1	Left Crank Arm	86	1	Upper Wire Harness
37	1	Pulley	87	1	Lower Wire Harness
38	4	Pedal Arm Cap	88	1	Pivot Axle
39	1	Crank	89	1	Left Pedal Bracket
40	2	Crank Bearing	90	4	Motor Washer
41	1	Flywheel	91	1	Water Bottle Holder
42	2	Flywheel Bearing	92	1	Right Pedal Bracket
43	1	Magnet	93	2	M4 x 22mm Screw
44	1	Flywheel Axle	94	5	M6 Large Washer
45	4	M8 Washer	95	1	Wedge
46	3	M8 Nylon Locknut	96	2	Incline Motor Spacer
47	2	Crank Screw	97	1	Incline Reed Switch
48	1	Right Crank Arm	98	1	Incline Reed Switch Clip
49	1	M6 x 25mm Bolt	99	2	Ramp Spacer
50	1	Control Board	100	1	Incline Axle

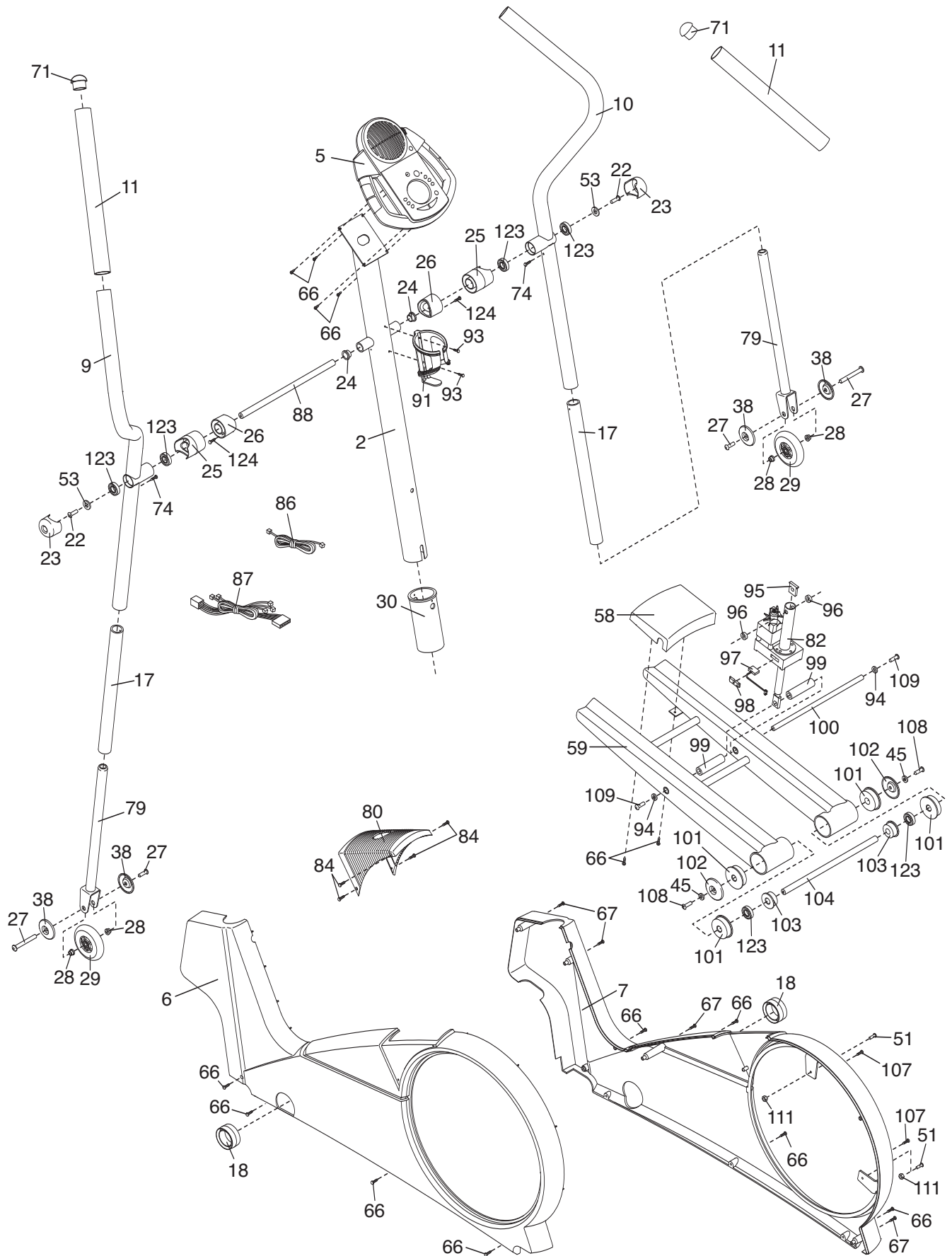
Key No.	Qty.	Description
101	4	Ramp Bushing
102	2	Ramp Cap
103	2	Frame Bushing
104	1	Frame Axle
105	1	M10 x 65mm Bolt
106	5	M10 Nylon Locknut
107	2	M4 x 19mm Screw
108	2	M8 x 19mm Patch Screw
109	2	M6 x 16mm Button Screw
110	3	#8 x 95mm Screw
111	4	M6 Nylon Locknut
112	1	Power Cord
113	4	M8 x 53mm Button Screw
114	1	Power Receptical
115	4	Pedal Arm Bearing
116	2	Hub Cover
117	2	Adjustment Bracket
118	2	Resistance Spring
119	2	Latch Pin

Key No.	Qty.	Description
120	1	Right Crank Hub
121	2	16mm Spacer
122	4	Large Snap Ring
123	6	Handlebar Bearing
124	2	M3 x 12mm Screw
125	4	M8 x 47mm Button Bolt
126	4	M8 Split Washer
127	8	M8 Jamnut
128	2	13mm Spacer
129	1	Left Crank Hub
130	4	Snap Washer
#	5	Allen Wrench
#	1	Grease
#	1	High-temperature Lubricant
#	1	User's Manual

Note: “#” indicates a non-illustrated part. Specifications are subject to change without notice.

# EXPLODED DRAWING A—Model No. PFEVEL7985.0

R1005A



# EXPLODED DRAWING B—Model No. PFEVEL7985.0

R1005A

