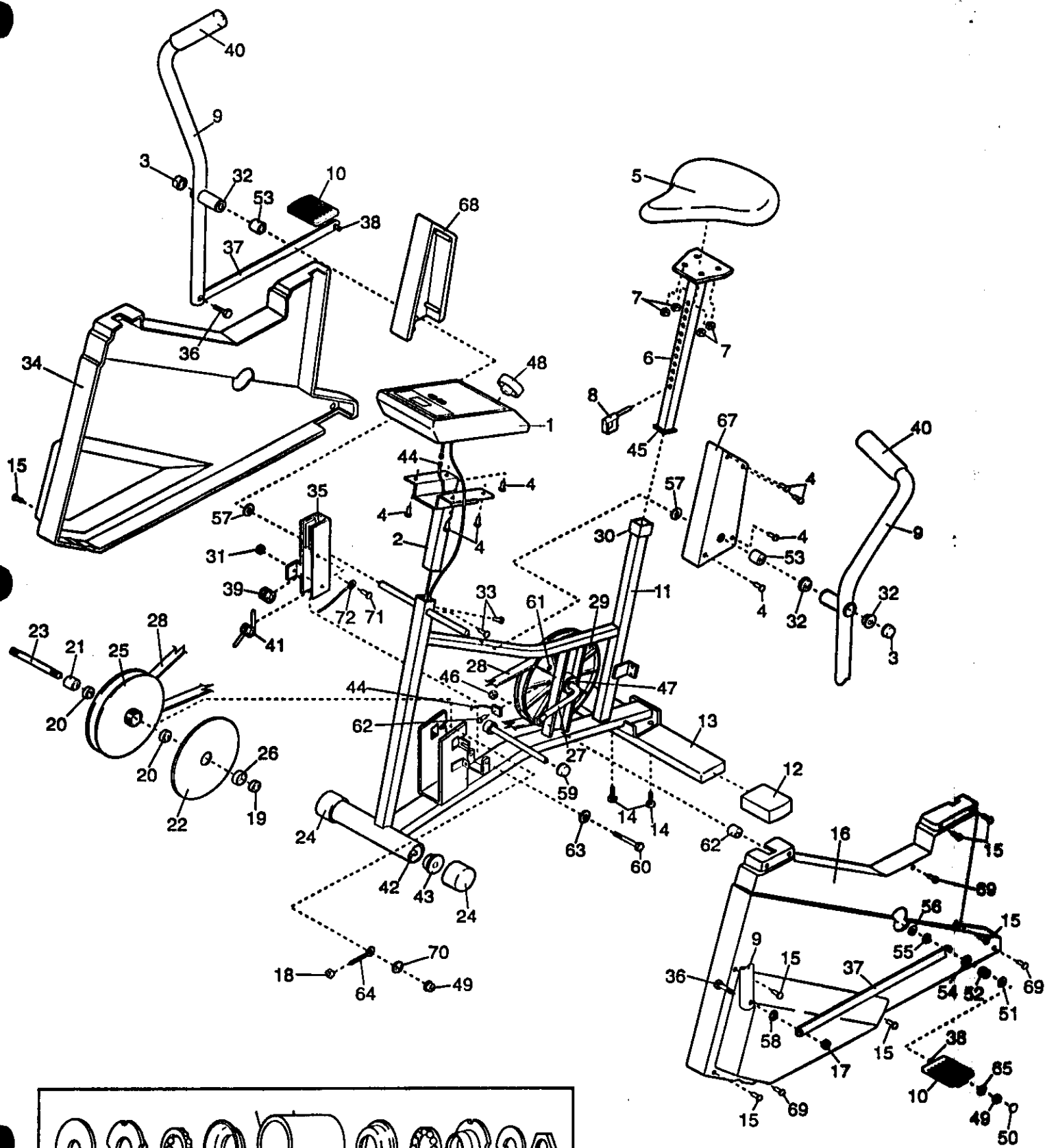


EXPLODED DRAWING—Model No. PFEX74050

R0095A



CRANK HARDWARE (47)

MODEL NUMBER: PFX7405
VERSION: 00
PRODUCT NAME: PROFORM C740
PRODUCT DESC:

MODEL/PART BOOK LISTING

PAGE 1
INI023P1
RUN DATE: 1/11/97
RUN TIME: 8:23:42

KEY NUMBER	PART NUMBER	DESCRIPTION	QUANTITY
	.	PROFORM C 740	0
1	129522	CONSOLE	1
2	125620	CONSOLE MOUNT	1
3	100151	5/8" AXLECAP	2
4	013294	1" PHILLIPS SCREW	16
5	105022	SEAT	1
6	116605	SEAT POST	1
7	012096	1/4" SEAT NUT	4
8	122946	SEAT PIN	1
9	117009	HANDLEBAR	1
10	112701	PEDAL	2
10A	112778	PEDAL ASSEMBLY	1
11	NSP	FRAME	1
12	105590	ENDCAP	2
13	125035	STABILIZER	1
14	013469	5/16" X 1.25" BOLT	2
15	.	SEE KEY# 4	0
16	129042	LEFT SIDESHIELD	1
17	012082	5/16" X 18 NUT	4
18	012090	1/4" NYLON LOCKNUT	2
19	113788	SMALL SPACER	1
20	113834	BEARING	2
21	113789	LARGE SPACER	1
22	119198	RESISTANCE DISK	1
23	113791	FLYWHEEL AXLE	1
24	106697	ROLLER	2
25	120135	FLYWHEEL	1
26	119200	LOCK RING	1
27	122870	CRANK	1
28	119199	TENSION BELT	1
29	122898	TENSION PULLEY	1
30	104786	SEAT POST BUSHING	1
31	012108	3/8" X 16 LOCKNUT	1
32	108667	HANDLEBAR BUSHING	4
33	103025	5/16" X 1/2" SCREW	2
34	129043	RIGHT SIDESHIELD	1
35	125031	TENSION BRACKET	1
36	013250	5/16" X 1.75" BOLT	2
37	127799	LINK ARM	2
38	112779	PEDAL SHAFT	2
39	100076	SMALL SPRING	1
40	105500	FOAM GRIP	2
41	113781	LARGE SPRING	1
42	106698	ROLLER AXLE	1
43	106880	ROLLER BUSHING	2
44	106115	REED SWITCH/SENSOR WIRE	1
45	104787	SEAT POST GLIDE	1
46	100904	1/2" NYLON LOCKNUT	2
47	110465	CRANK HARDWARE	1
48	119811	ADJUSTMENT KNOB	1
49	.	SEE KEY# 17	0
50	112704	PEDAL CAP	2
51	101459	11/16" SPRING WASHER	2
52	103571	PEDAL SPRING	1

MODEL NUMBER: PFE7405
 VERSION: 00
 PRODUCT NAME: PROFORM C740
 PRODUCT DESC:

MODEL/PART BOOK LISTING

PAGE 2
 INI023P1
 RUN DATE: 1/11/97
 RUN TIME: 8:23:42

KEY NUMBER	PART NUMBER	DESCRIPTION	QUANTITY
53	119466	HANDLEBAR SPACER	2
54	101460	11/16" WASHER	2
55	101036	LINK ARM BUSHING	2
56	101494	9/16" WASHER	2
57	108668	5/8" SPACER	2
58	100364	LINK ARM BUSHING	2
59	101768	3/8" AXLE CAP	2
60	104925	TENSION BRACKET BOLT	1
61	100498	MAGNET	1
62	109233	9/16" PEDAL SPACER	2
	.	NOTE: IF CUSTOMER NEEDS	0
	013300	THE RSW SCREW SEND 013300	0
	.	IF THEY NEED THE PEDAL	0
	109233	SPACER ORDER 109233.	0
63	106832	NYLON WASHER	1
64	104583	EYEBOLT	2
65	014041	5/16" WASHER	4
66	013300	3/4" SELF-TAPPING SCREW	1
67	113833	LEFT NECK SHIELD	1
68	113832	RIGHT NECK SHIELD	1
69	107428	3/4" TEC SCREW	6
70	.	SEE KEY# 65	0
71	.	NOT USED, #8 X 1/2" SCREW	1
	.	NOTE: THE SCREW IS NOT	0
	.	USED NOW. A TCD HOOK IS	0
	.	USED FOR REPLACEMENT,	0
	122943	ORDER PART #122943	0
72	124416	TENSION CABLE	1
	.	NOTE: THE SCREW IS NO	0
	.	LONGER USED TO ATTACH	0
	.	CABLE TO BRACKET, IF TCD	0
	.	HOOK IS NEEDED, SEND	0
	122943	PART# 122943.	0
	.	NON-ILLUSTRATED PARTS	0
#	122943	TENSION CABLE HOOK	1
#	125627	SIDESHIELD DECAL	2
#	013300	RSW SCREW	1
#	101324	SCREWDRIVER/WRENCH	1
#	045028	SOCKET TOOL	1
#	045010	ALLEN WRENCH	1
#	016055	M-CLIP	4
#	125626	USER'S MANUAL	1
#	119465	HARDWARE KIT	1
.	.	119466 HB SPACER	2
.	.	013469 1.25" SCREW	4
.	.	100151 5/8" AXLECAP	2
.	.	108668 SPACER	2
.	.	013294 3/4" SCREW	4
.	.	012082 5/16" LOCK NUT	2
.	.	013250 1.75" SCREW	2
.	.	103025 1/2" SCREW	2
.	.	100364 BUSHING	2
.	.	045010 ALLEN WRENCH	1
.	.	101324 PH DRIVER/WRENCH	1

MODEL NUMBER: PFEX7405
VERSION: 00
PRODUCT NAME: PROFORM C740
PRODUCT DESC:

MODEL/PART BOOK LISTING

PAGE 3
INI023P1
RUN DATE: 1/11/97
RUN TIME: 8:23:42

KEY NUMBER	PART NUMBER	DESCRIPTION	QUANTITY
.	.	045028 SOCKET TUBE	1
.	.	104838 GREASE	1
.	.	121636 CN-AXLECAP CAUTION	1