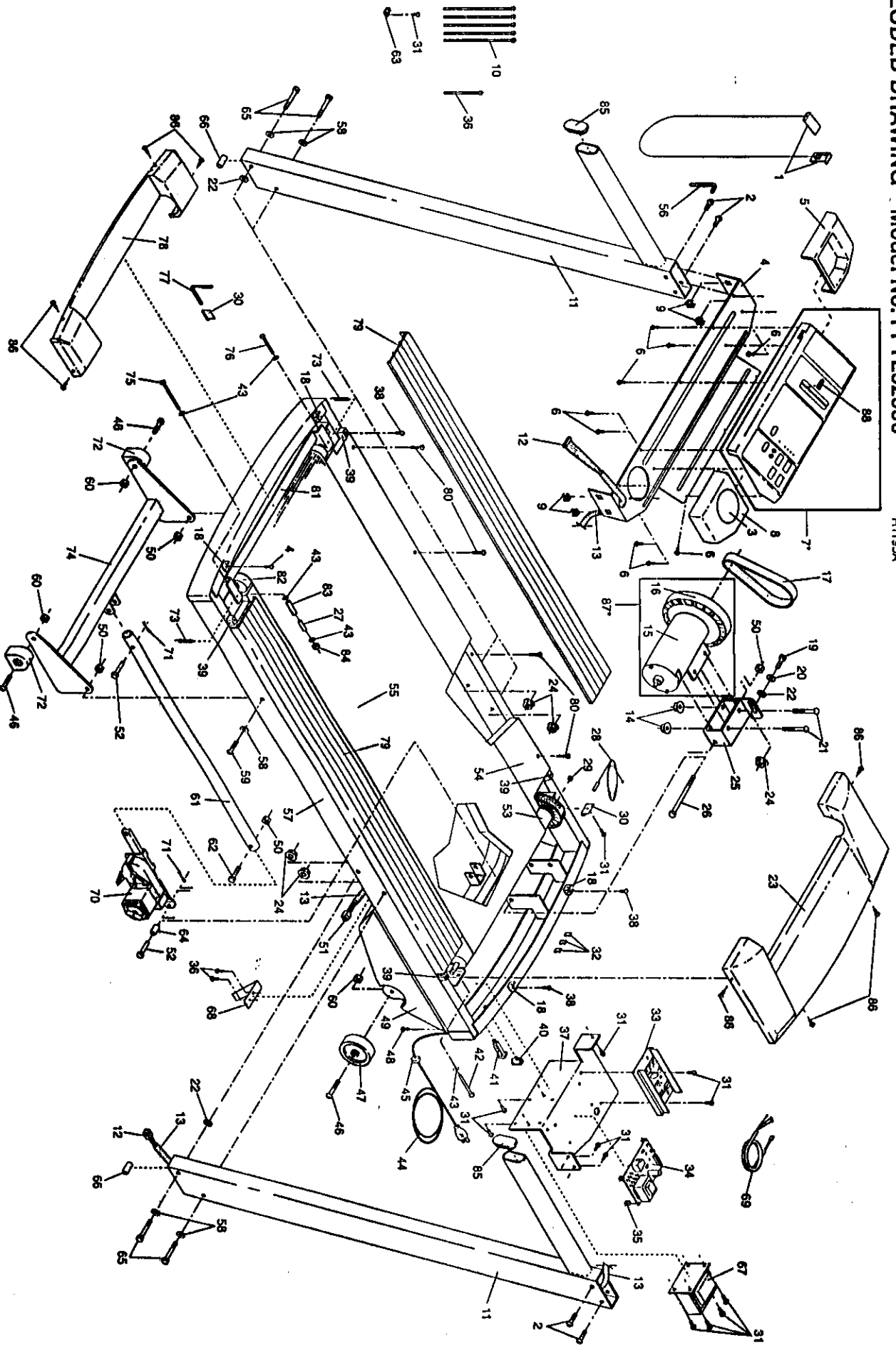


EXPLODED DRAWING—Model No. PFTL52550

R1195A



MODEL NUMBER: PFTL5255
 VERSION: 00
 PRODUCT NAME: PROFORM 525SE
 PRODUCT DESC: TREADMILL

MODEL/PART BOOK LISTING

PAGE 1
 INI023P1
 RUN DATE: 3/10/97
 RUN TIME: 16:24:44

| KEY NUMBER | PART NUMBER | DESCRIPTION | QUANTITY |
|------------|-------------|---------------------------|----------|
| | . | PROFORM 525 SE TREADMILL | 0 |
| 1 | 119038 | SAFETY KEY/CLIP | 1 |
| 2 | 013438 | 3/8" X 1" CONSOLE BOLT | 4 |
| 3 | 128020 | WATER BOTTLE INSERT | 1 |
| 4 | 126133 | CONSOLE PLATE | 1 |
| 5 | 126075 | CONSOLE TRAY | 1 |
| 6 | 013540 | CONSOLE SCREW | 12 |
| 7 | 128602 | CONSOLE | 1 |
| 8 | 126077 | WATER BOTTLE HOLDER | 1 |
| 9 | 111430 | CAGE NUT | 4 |
| 10 | 016057 | 8" CABLE TIE | 5 |
| 11 | 126564 | UPRIGHT | 2 |
| 12 | 126775 | LONG WIRE HARNESS | 1 |
| 13 | 113204 | CABLE LOOM | 3 |
| 14 | 105477 | MOTOR NUT | 2 |
| 15 | 129667 | MOTOR | 1 |
| 16 | 112825 | PULLEY/FLYWHEEL/FAN | 1 |
| 17 | 135866 | MOTOR BELT | 1 |
| 18 | 127419 | HOOD ANCHOR | 4 |
| 19 | 013547 | MOTOR TENSION BOLT | 1 |
| 20 | 122812 | MOTOR TENSION WASHER | 1 |
| 21 | 123385 | MOTOR BOLT | 2 |
| 22 | 014117 | STAR WASHER | 3 |
| 23 | 126571 | FRONT HOOD | 1 |
| 24 | 120867 | FLANGE NUT | 5 |
| 25 | 122632 | MOTOR MOUNT BRACKET | 1 |
| 26 | 107503 | MOTOR SWIVEL BOLT | 1 |
| 27 | 123470 | SPRING SLEEVE | 1 |
| 28 | 117882 | REED SWITCH/WIRE | 1 |
| 29 | 100498 | MAGNET | 1 |
| 30 | 016028 | WRENCH CLIP | 1 |
| 31 | 120630 | SCREW | 14 |
| 32 | 054023 | WIRE CLIP | 3 |
| 33 | . | CONTROLLER | 1 |
| . | . | NOTE: IF CHOKE #67 HAS 2 | 0 |
| . | 129861 | HOLES SEND CNTRLR 129861 | 0 |
| . | . | IF THE CHOKE HAS 4 HOLES | 0 |
| . | 128914 | SEND THE ASSEMBLY 128914. | 0 |
| 34 | 128903 | POWER BOARD W/CLIPS | 1 |
| 35 | 125819 | PLASTIC STAND-OFFS | 4 |
| 36 | 016029 | 4" WIRE TIE | 1 |
| 37 | 126046 | ELECTRONICS BRACKET | 1 |
| 38 | 129168 | ANCHOR SCREW | 8 |
| 39 | 125802 | RUBBER HOOD ANCHOR | 4 |
| 40 | 119163 | ON/OFF SWITCH | 1 |
| 41 | 109382 | CIRCUIT BREAKER | 1 |
| 42 | 112609 | FRONT ROLLER ADJ BOLT | 1 |
| 43 | 014127 | ADJUSTMENT WASHER | 5 |
| 44 | 124669 | POWER CORD | 1 |
| 45 | 124695 | GROMMET | 1 |
| 46 | 117806 | WHEEL BOLT | 4 |
| 47 | 123647 | WHEEL | 2 |
| 48 | 013162 | SAFETY COVER SCREW | 8 |
| 49 | 125759 | SAFETY COVER | 1 |

MODEL NUMBER: PFTL5255
 VERSION: 00
 PRODUCT NAME: PROFORM 525SE
 PRODUCT DESC: TREADMILL

MODEL/PART BOOK LISTING

PAGE 2
 INI023P1
 RUN DATE: 3/10/97
 RUN TIME: 16:24:44

| KEY NUMBER | PART NUMBER | DESCRIPTION | QUANTITY |
|------------|-------------|---------------------------|----------|
| 50 | 012149 | WHEEL NUT | 4 |
| 51 | 126457 | SHORT WIRE HARNESS | 1 |
| 52 | 112669 | INCLINE PIN | 2 |
| 53 | 129022 | FRONT ROLLER/PULLEY | 1 |
| 54 | 127698 | WALKING BOARD W/FASTENER | 1 |
| 55 | 128954 | WALKING BELT W/FASTENER | 1 |
| 56 | 045017 | ALLEN WRENCH | 1 |
| 57 | NSP | FRAME | 1 |
| 58 | 014132 | 3/8" WASHER | 6 |
| 59 | 013544 | INCLINE LEG BOLT | 2 |
| 60 | 012056 | INCLINE NUT | 4 |
| 61 | 125855 | INCLINE ROD | 1 |
| 62 | 013375 | INCLINE BOLT | 1 |
| 63 | 116927 | TIE HOLDER CLAMP | 1 |
| 64 | 114270 | INCLINE SPACER | 1 |
| 65 | 120003 | 3/8" X 3.5" BOLT | 4 |
| 66 | 122332 | UPRIGHT SPACER | 2 |
| 67 | . | CHOKE | 1 |
| . | . | NOTE: IF THE CHOKE HAS 2 | 0 |
| . | 031238 | HOLES SEND CHOKE 031238. | 0 |
| . | . | IF THE CHOKE HAS 4 HOLES | 0 |
| . | 128914 | SEND THE ASSEMBLY 128914. | 0 |
| 68 | 127098 | BELT GUIDE | 1 |
| 69 | 125871 | MOTOR CONTROLLER WIRE | 1 |
| 70 | 129875 | INCLINE MOTOR | 1 |
| 71 | 106334 | COTTER PIN | 2 |
| 72 | 125861 | INCLINE LEG FOOT | 2 |
| 73 | 127544 | REAR GUARD SPRING | 2 |
| 74 | 126561 | INCLINE LEG | 1 |
| 75 | 128260 | RT REAR ADJUSTMENT BOLT | 1 |
| 76 | 105444 | LT REAR ADJUSTMENT BOLT | 1 |
| 77 | 126040 | 3/16" ALLEN WRENCH | 1 |
| 78 | 126572 | REAR HOOD | 1 |
| 79 | 128451 | FOOT RAIL W/FASTENER | 1 |
| 80 | 100691 | PLATFORM SCREW | 8 |
| 81 | 129530 | REAR ROLLER GUARD | 1 |
| 82 | 127009 | REAR ROLLER | 1 |
| 83 | 128986 | REAR ROLLER TENSION SPRNG | 1 |
| 84 | 119439 | REAR ROLLER TENSION NUT | 1 |
| 85 | 126569 | HANDRAIL ENDCAP | 2 |
| 86 | 013300 | HOOD SCREW | 8 |
| 87 | 129668 | MTR/PULY/FLWH/FAN | 1 |
| 88 | 129312 | POTENTIOMETER KNOB | 1 |
| . | . | NON-ILLUSTRATED PARTS | 0 |
| # | 131090 | REED SWITCH WIRE CLAMP | 1 |
| # | 127819 | UPRIGHT PLUG | 4 |
| # | 126573 | WIRE DIAGRAM | 1 |
| # | 101897 | 14" WHITE WIRE, 2F | 1 |
| # | 107771 | 8" WHITE WIRE, M/F | 1 |
| # | 114953 | 14" BLUE WIRE, 2F | 1 |
| # | 112083 | 8" BLUE WIRE, 2F | 1 |
| # | 109407 | 4" BLACK WIRE, 2F | 1 |
| # | 102634 | 8" GREEN GROUND WIRE | 1 |
| # | 126578 | USER'S MANUAL | 1 |

MODEL NUMBER: PFTL5255
VERSION: 00
PRODUCT NAME: PROFORM 525SE
PRODUCT DESC: TREADMILL

MODEL/PART BOOK LISTING

PAGE 3

INI023P1

RUN DATE: 3/10/97

RUN TIME: 16:24:44

| KEY NUMBER | PART NUMBER | DESCRIPTION | QUANTITY |
|------------|-------------|-------------------|----------|
| # | 126577 | LITERATURE PACKET | 1 |
| . | 126578 | USER'S MANUAL | 1 |
| . | 122332 | UPRIGHT SPACER | 2 |
| . | 127985 | HARDWARE KIT | 1 |
| . | 016028 | WRENCH CLIP | 1 |
| . | 013438 | 1" SCREW | 4 |
| . | 120003 | 3.5" SCREW | 4 |
| . | 014132 | 3/8" WASHER | 4 |
| . | 120867 | 3/8" HEX NUT | 4 |
| . | 014117 | 3/8" STAR WASHER | 2 |
| . | 126040 | 3/16" WRENCH | 1 |
| . | 045017 | 7/32" WRENCH | 1 |