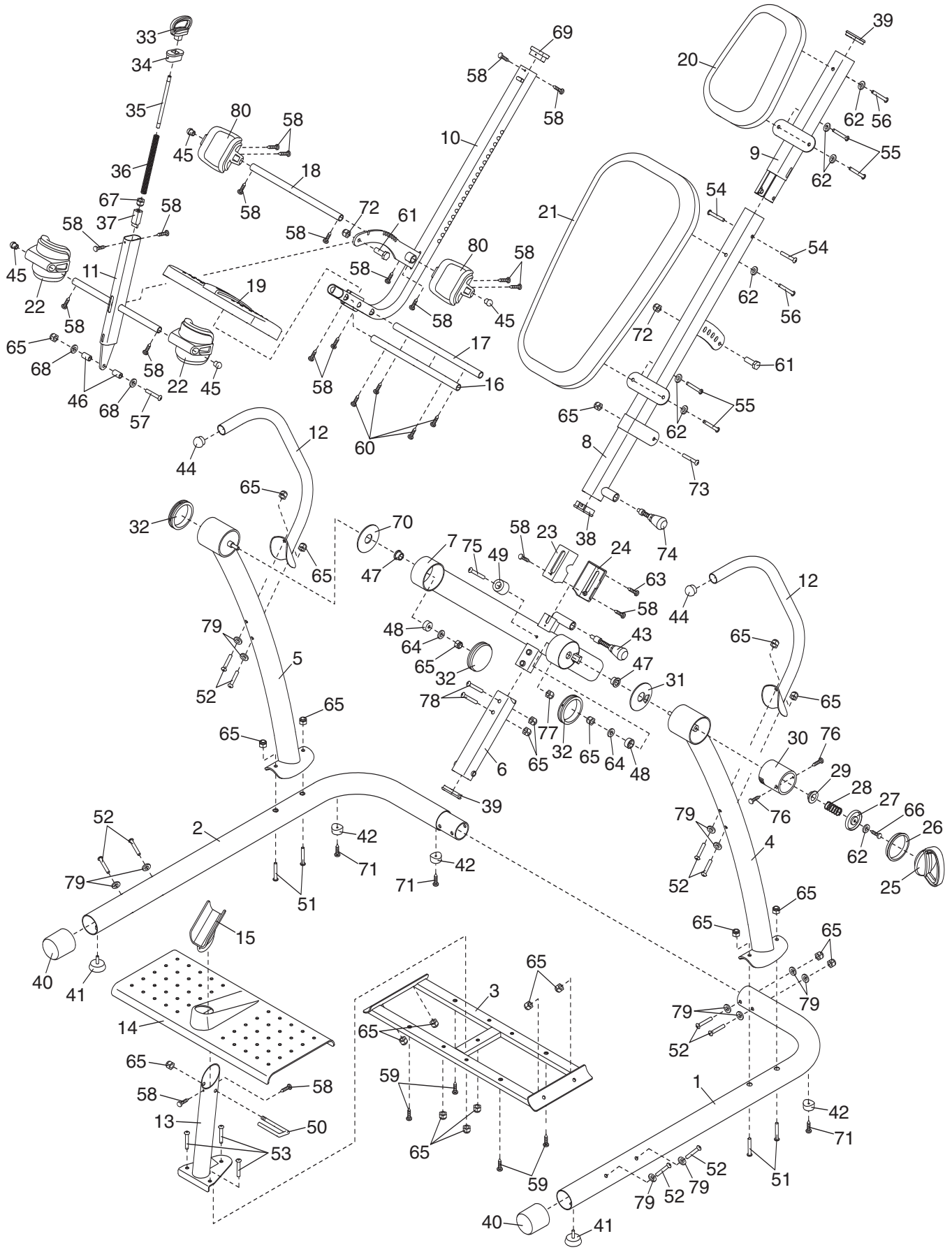


EXPLODED DRAWING—Model No. RBBE1996.6

R0907A



PART LIST—Model No. RBBE1996.6

R0907A

Key No.	Qty.	Description	Key No.	Qty.	Description
1	1	Left Base	43	1	Long Adjustment Knob
2	1	Right Base	44	2	32mm Round Cap
3	1	Center Base	45	4	19mm Round Cap
4	1	Left Frame	46	2	16mm Spacer
5	1	Right Frame	47	2	Pivot Bushing
6	1	Center Frame Extension	48	2	29mm Spacer
7	1	Center Frame	49	1	Bumper
8	1	Backrest Frame	50	1	Lock Pin
9	1	Headrest Frame	51	4	M10 x 85mm Button Bolt
10	1	Leg Frame	52	10	M10 x 80mm Button Bolt
11	1	Lock Frame	53	3	M10 x 35mm Button Bolt
12	2	Handle	54	2	M10 x 16mm Button Screw
13	1	Support Leg	55	4	M6 x 18mm Button Screw
14	1	Base Plate	56	2	M6 x 55mm Button Screw
15	1	Support Bracket	57	1	M10 x 75mm Button Bolt
16	1	Top Tube	58	20	M4 x 15mm Screw
17	1	Bottom Tube	59	4	M5 x 25mm Screw
18	1	Ankle Brace Tube	60	4	M4 x 25mm Screw
19	1	Foot Plate	61	2	M8 x 16mm Button Bolt
20	1	Headrest	62	7	M6 Washer
21	1	Backrest	63	1	M4 x 30mm Screw
22	2	Front Ankle Brace	64	2	M10 Large Washer
23	1	Top Cover	65	24	M10 Nylon Locknut
24	1	Bottom Cover	66	1	M6 x 15mm Screw
25	1	Index Handle	67	1	M10 Nut
26	1	Index Ring	68	2	M10 Washer
27	1	Cup Washer	69	1	30mm x 60mm Cap
28	1	Small Spring	70	1	Right Large Spacer
29	1	Cup Bushing	71	3	M4 x 20mm Screw
30	1	Index Cup	72	2	M8 Nylon Locknut
31	1	Left Large Spacer	73	1	M10 x 95mm Button Bolt
32	3	89mm Cap	74	1	Short Adjustment Knob
33	1	Lock Handle	75	1	M6 x 60mm Button Bolt
34	1	Stop Cap	76	2	M5 x 15mm Screw
35	1	Lock Rod	77	1	M6 Nut
36	1	Lock Spring	78	2	M10 x 53mm Button Bolt
37	1	Lock Wedge	79	12	M10 Curved Washer
38	1	Leg Frame Bushing	80	2	Rear Ankle Brace
39	2	42mm x 70mm Cap	#	-	User's Manual
40	2	63mm Round Cap	#	-	Hex Key
41	2	Leveling Foot	#	-	Grease Packet
42	3	Foot			

Note: “#” indicates a non-illustrated part. Specifications are subject to change without notice. See the back cover of this manual for information about ordering replacement parts.