

PART LIST—Model No. WESY2037.0

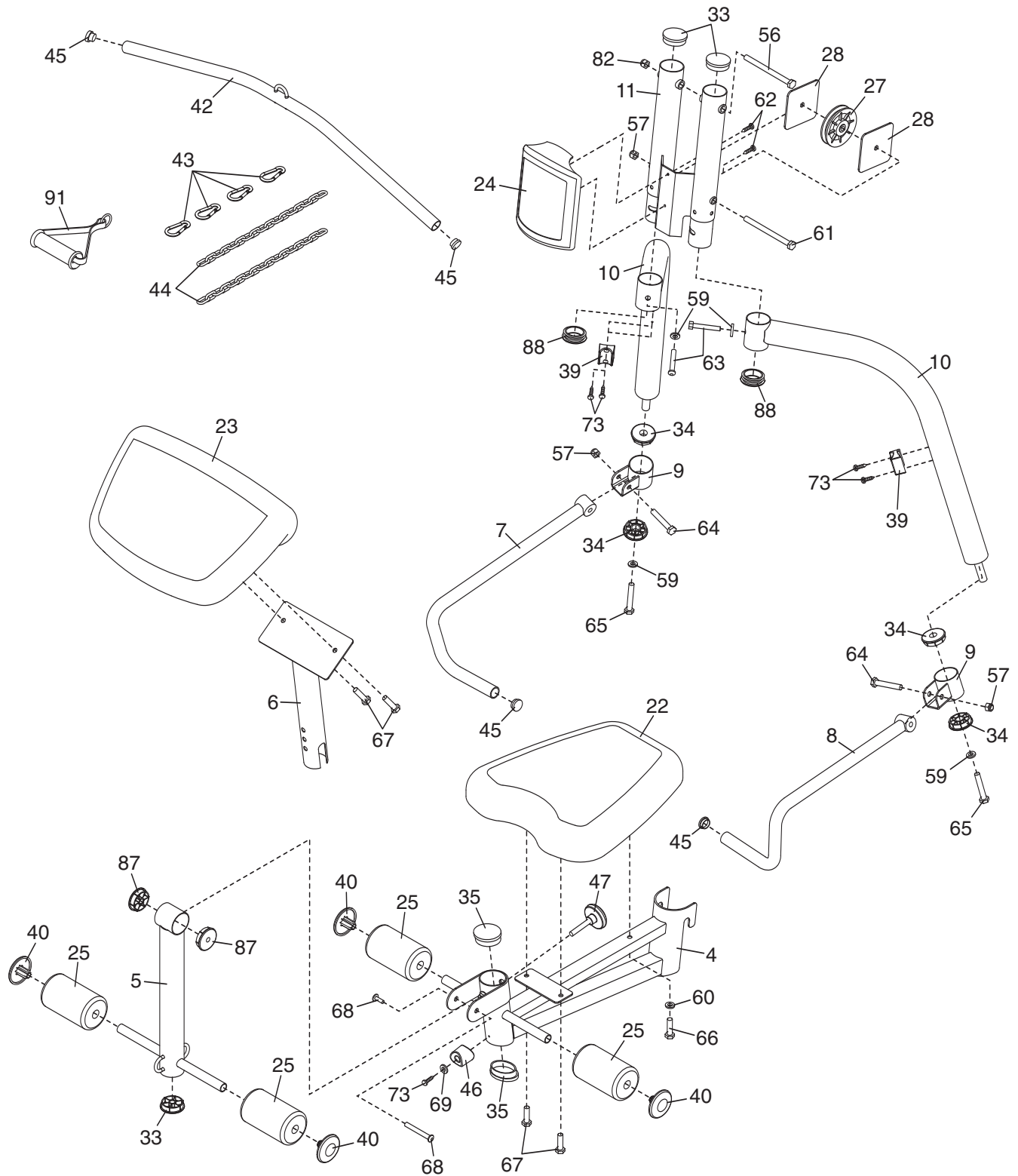
R0807B

| Key No. | Qty. | Description | Key No. | Qty. | Description |
|---------|------|-----------------------|---------|------|------------------------------|
| 1 | 1 | Frame | 49 | 4 | 12.5mm Square Inner Cap |
| 2 | 1 | Rear Stabilizer | 50 | 2 | 63mm x 50mm Inner Cap |
| 3 | 2 | Front Stabilizer | 51 | 2 | Cable Trap |
| 4 | 1 | Seat Frame | 52 | 1 | Frame Foot |
| 5 | 1 | Leg Lever | 53 | 1 | Weight Pin |
| 6 | 1 | Curl Post | 54 | 1 | Lock Pin |
| 7 | 1 | Right Press Arm | 55 | 1 | Lock |
| 8 | 1 | Left Press Arm | 56 | 1 | M12 x 200mm Bolt |
| 9 | 2 | Pivot Bracket | 57 | 18 | M10 Nylon Locknut |
| 10 | 2 | Arm | 58 | 1 | M6 Nylon Locknut |
| 11 | 1 | Press Frame | 59 | 18 | M10 Washer |
| 12 | 1 | Shroud | 60 | 3 | M6 Washer |
| 13 | 2 | Shroud Bracket | 61 | 1 | M10 x 197mm Bolt |
| 14 | 1 | Weight Tube | 62 | 2 | M4 x 12mm Self-tapping Screw |
| 15 | 1 | Weight Tube Cap | 63 | 4 | M10 x 65mm Screw |
| 16 | 8 | Weight | 64 | 7 | M10 x 50mm Bolt |
| 17 | 1 | Weight Base | 65 | 2 | M10 x 80mm Bolt |
| 18 | 2 | U-bracket | 66 | 1 | M6 x 45mm Screw |
| 19 | 2 | Weight Guide | 67 | 4 | M6 x 16mm Screw |
| 20 | 4 | Stabilizer Foot | 68 | 1 | M10 x 65mm Bolt Set |
| 21 | 1 | Backrest | 69 | 4 | M4 Washer |
| 22 | 1 | Seat | 70 | 2 | M10 x 45mm Bolt |
| 23 | 1 | Curl Pad | 71 | 2 | M10 x 92mm Bolt |
| 24 | 1 | Press Frame Cover | 72 | 2 | M12 x 30mm Screw |
| 25 | 4 | Foam Pad | 73 | 12 | M4 x 20mm Self-tapping Screw |
| 26 | 2 | 115mm Pulley | 74 | 4 | M6 x 30mm Bolt |
| 27 | 8 | 90mm Pulley | 75 | 2 | M8 Nylon Locknut |
| 28 | 2 | Pulley Plate | 76 | 2 | M8 Washer |
| 29 | 1 | Press Cable | 77 | 1 | M12 x 60mm Screw |
| 30 | 1 | High Cable | 78 | 2 | M10 x 100mm Bolt |
| 31 | 1 | Low Cable | 79 | 2 | M8 x 40mm Bolt |
| 32 | 1 | 38mm Square Inner Cap | 80 | 2 | Large Washer |
| 33 | 3 | 50mm Round Inner Cap | 81 | 2 | M10 x 55mm Bolt |
| 34 | 4 | Pivot Bracket Bushing | 82 | 1 | M12 Nylon Locknut |
| 35 | 2 | Seat Frame Cap | 83 | 1 | M12 Washer |
| 36 | 4 | Stabilizer Bushing | 84 | 1 | M6 x 38mm Bolt |
| 37 | 16 | Weight Bushing | 85 | 2 | M6 x 20mm Bolt |
| 38 | 2 | Press Frame Bushing | 86 | 2 | Mounting Peg |
| 39 | 2 | Press Arm Magnet | 87 | 2 | Leg Lever Bushing |
| 40 | 4 | Foam Pad Cap | 88 | 2 | Arm Cap |
| 41 | 2 | 25.5mm Pulley Spacer | 89 | 6 | 16mm Round Inner Cap |
| 42 | 1 | Lat Bar | 90 | 1 | Weight Tube Cap |
| 43 | 4 | Cable Clip | 91 | 1 | Handle Strap |
| 44 | 2 | Chain | 92 | 4 | 13mm x 26mm Inner Cap |
| 45 | 4 | 25mm Round Inner Cap | * | — | User's Manual |
| 46 | 1 | Leg Lever Bumper | * | — | Exercise Guide |
| 47 | 1 | Curl Post Knob | * | — | Grease Packet |
| 48 | 4 | 6.5mm Pulley Spacer | * | — | Hex Key |

Note: Specifications are subject to change without notice. See the back cover of this manual for information about ordering replacement parts. *These parts are not illustrated.

EXPLODED DRAWING A—Model No. WESY2037.0

R0807B



EXPLODED DRAWING B—Model No. WESY2037.0

R0807B

