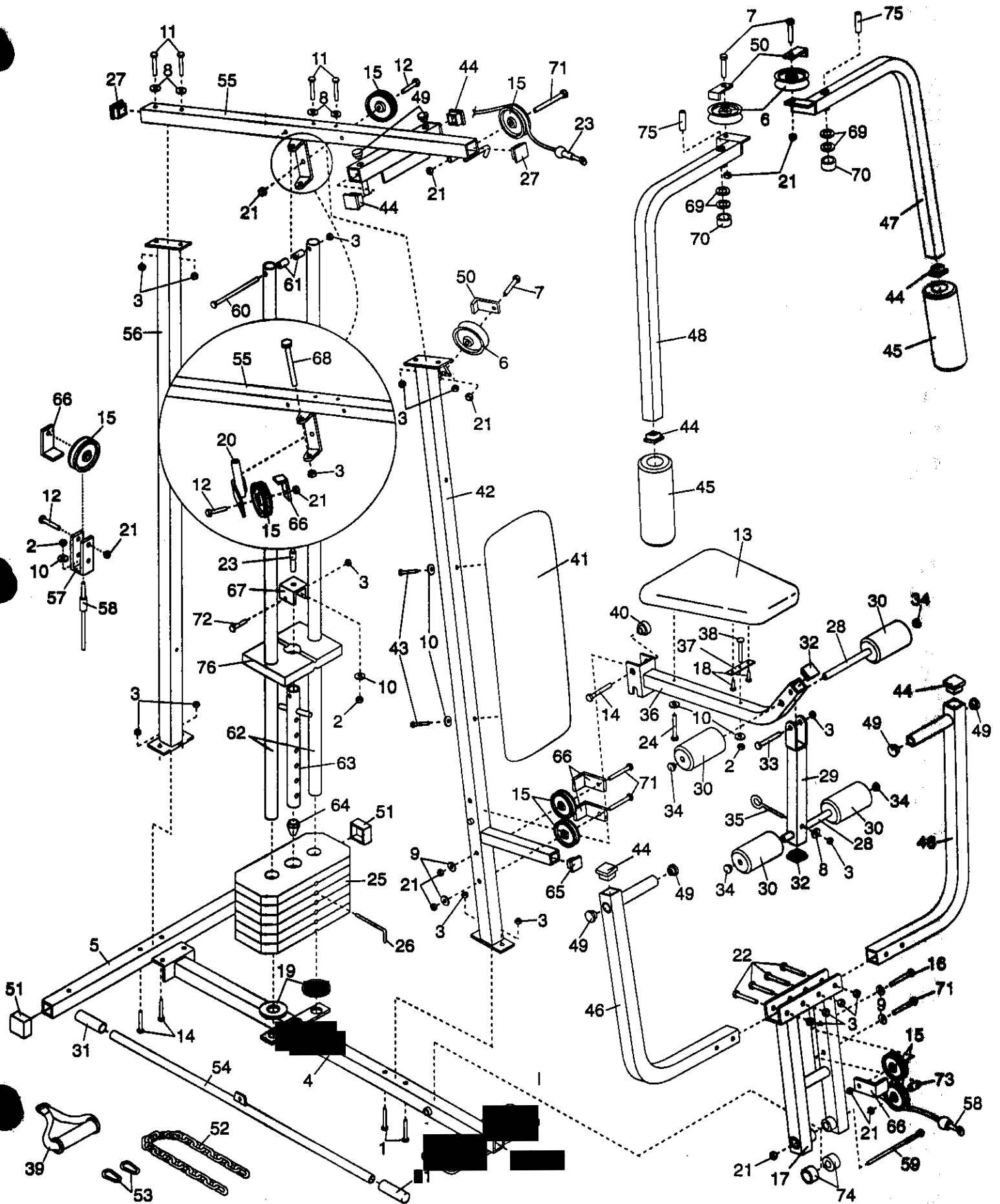


# EXPLODED DRAWING—Model No. WESY85100

R0895A



MODEL NUMBER: WESY8510  
 VERSION: 00  
 PRODUCT NAME: WEIDER 8510 SYSTEM  
 PRODUCT DESC:

MODEL/PART BOOK LISTING

PAGE 1  
 INI023P1  
 RUN DATE: 9/18/96  
 RUN TIME: 15:12:33

KEY NUMBER	PART NUMBER	DESCRIPTION	QUANTITY
.	.	7/95 CANADA	0
.	.	WEIDER 8510 SYSTEM	0
1	100994	CARRIAGE BOLT	2
2	012090	1/4" NYLON LOCKNUT	3
3	012082	5/16" NYLON LOCKNUT	17
4	126784	BASE	1
5	126785	STABILIZER	1
6	115164	V-PULLEY	3
7	103045	3/8" X 2.5" BOLT	3
8	014105	5/16" FLAT WASHER	5
9	014087	3/8" FLAT WASHER	4
10	104881	1/4" FLAT WASHER	6
11	113744	5/16" X 2.75" BOLT	4
12	013580	3/8" X 2" BOLT	3
13	126786	SEAT	1
14	113814	5/16" X 2.75" CARR BOLT	3
15	115370	3.5" PULLEY (NOTE: IF	8
.	.	ORDERING THE BOTTOM	0
.	.	PULLEY FOR THE PRESS	0
.	124590	FRAME #17 ORDER# 124590)	0
16	104049	3/8" X 3.5" BOLT	1
17	126787	PRESS FRAME	1
18	103758	1/4" X 1/2" SCREW	2
19	115644	WEIGHT BUMPER	2
20	126788	PULLEY BRACKET	1
21	012108	3/8" NYLON LOCK NUT	12
22	103053	5/16" X 2.5" BOLT	4
23	126789	LONG CABLE, 142"	1
24	102757	1/4" X 2" SCREW	1
25	120294	WEIGHT	6
26	122693	WEIGHT PIN	1
27	108874	2" SQ INNER CAP	3
28	131843	12.5" PAD TUBE	2
29	126790	LEG LEVER	1
30	103805	5.5" PAD	4
31	119702	HAND GRIP	2
32	103833	1.5" SQ INNER CAP	2
33	102884	5/16" X 2.25" BOLT	1
34	119170	3/4" ROUND INNER CAP	4
35	121564	5/16" X 2" EYEBOLT	1
36	126797	SEAT FRAME	1
37	126867	SEAT PLATE	1
38	126798	1/4" X 2" CARRIAGE BOLT	1
39	115177	NYLON STRAP	1
40	119192	SEAT KNOB	1
41	131964	BACKREST	1
42	126792	FRONT UPRIGHT	1
43	112302	1/4" X 2.5" SCREW	2
44	113666	1.75" SQ INNER CAP	6
45	120596	10" PAD	2
46	126793	PRESS ARM	1
47	126884	LEFT ARM W/HARDWARE	1
48	126886	RIGHT ARM W/HARDWARE	1
49	120733	1" ROUND INNER CAP	6

MODEL NUMBER: WESY8510  
 VERSION: 00  
 PRODUCT NAME: WEIDER 8510 SYSTEM  
 PRODUCT DESC:

MODEL/PART BOOK LISTING

PAGE 2  
 INI023P1  
 RUN DATE: 9/18/96  
 RUN TIME: 15:12:33

KEY NUMBER	PART NUMBER	DESCRIPTION	QUANTITY
50	126799	LONG CABLE TRAP	3
51	105723	2" SQ OUTER CAP	2
52	116868	CHAIN	1
53	103087	CABLE CLIP	2
54	126796	LAT BAR	1
55	126800	TOP FRAME	1
56	126801	REAR UPRIGHT	1
57	126802	LONG "U" BRACKET	1
58	126803	SHORT CABLE	1
59	126804	3/8" X 8" BOLT	1
60	122686	5/16" X 6" BOLT	1
61	122688	1/2" X 3/4" SPACER	2
62	122719	WEIGHT GUIDE	2
63	126805	WEIGHT TUBE	1
64	122691	WEIGHT TUBE BUMPER	1
65	120696	1" SQ INNER CAP	1
66	126807	CABLE TRAP BRACKET	5
67	126806	SMALL "U" BRACKET	1
68	120737	5/16" X 5" BOLT	1
69	108778	1" RETAINER	4
70	120808	1" ROUND COVER CAP	2
71	106465	3/8" X 3.75" BOLT	4
72	013210	5/16" X 1.5" BOLT	1
73	121845	5/8" X 9/16" SPACER	1
74	126891	1.25" X 2.5" PLSTC BSHG	2
75	126808	1" X 7/8" PLSTC BSHG	2
76	126866	TOP WEIGHT	1
.	.	NON-ILLUSTRATED PARTS	0
#	132191	WEIGHT RESISTANCE CHART	1
#	124590	PRESS FRAME BOTTOM PULLEY	1
#	124772	DECAL SHEET	1
#	125056	EXERCISE POSTER	1
#	125068	USER'S MANUAL	1
#	126869	HWKIT, STEPS 1-6	1
.	.	014105 5/16" FLAT WASHER	4
.	.	012082 5/16" LOCK NUT	9
.	.	113744 5/16" X2.75" SCREW	4
.	.	122686 5/16" X 6" BOLT	1
.	.	100994 2.5" CARRIAGE BOLT	2
.	.	113814 2.75" CARR BOLT	2
.	.	122688 SPACER	2
.	.	120696 1" SQ INNER CAP	1
.	.	113666 1.75" INT ENDCAP	2
.	.	108874 2" INT ENDCAP	3
.	.	120733 1" RND INT ENDCAP	2
.	.	105723 2" SQ EXT ENDCAP	2
.	.	115644 RUBBER BUMPER	2
.	.	122691 WT TUBE BUMPER	1
#	126870	HWKIT, STEPS 7-9	1
.	.	012082 5/16" NYL LOCKNUT	4
.	.	012108 3/8" NYL LOCKNUT	1
.	.	103053 2.5" SCREW	4
.	.	126804 8" SCREW	1
.	.	108778 1" RETAINER	4

MODEL NUMBER: WESY8510  
VERSION: 00  
PRODUCT NAME: WEIDER 8510 SYSTEM  
PRODUCT DESC:

MODEL/PART BOOK LISTING

INT023P1  
RUN DATE: 9/18/96  
RUN TIME: 15:12:33

KEY NUMBER	PART NUMBER	DESCRIPTION	QUANTITY
.	.	113666 1.75" INT ENDCAP	4
.	.	120733 1" RND INT ENDCAP	4
.	.	120808 1" RND EXT ENDCAP	2
.	.	126808 BUSHING	2
#	126871	HWKIT, STEPS 10-18	1
.	.	104881 1/4" FLAT WASHER	2
.	.	012090 1/4" NYL LOCKNUT	2
.	.	012082 5/16" NYL LOCKNUT	1
.	.	012108 3/8" NYL LOCKNUT	1
.	.	013210 1.5" SCREW	1
.	.	103045 2.5" SCREW	1
.	.	115164 3.5" PULLEY	1
#	126872	HWKIT, STEPS 19-23	1
.	.	104881 1/4" FLAT WASHER	4
.	.	014105 5/16" FLAT WASHER	1
.	.	012090 1/4" NYL LOCKNUT	1
.	.	012082 5/16" NYL LOCKNUT	2
.	.	102884 2.25" SCREW	1
.	.	126798 2" CARRIAGE BOLT	1
.	.	113814 2.75" CARR BOLT	1
.	.	103758 .5" SCREW	2
.	.	102757 2" SCREW	1
.	.	112302 2.5" SCREW	2
.	.	121564 2" EYEBOLT	1
.	.	122693 5.25" WT STACK PIN	1
.	.	103833 1.5" INT ENDCAP	2
.	.	119170 .75"RND INT ENDCAP	4
.	.	119192 5/16" RND KNOB	1
.	.	115177 NYLON STRAP	1
.	.	116868 CHAIN	1
.	.	103087 CABLE CLIP	2