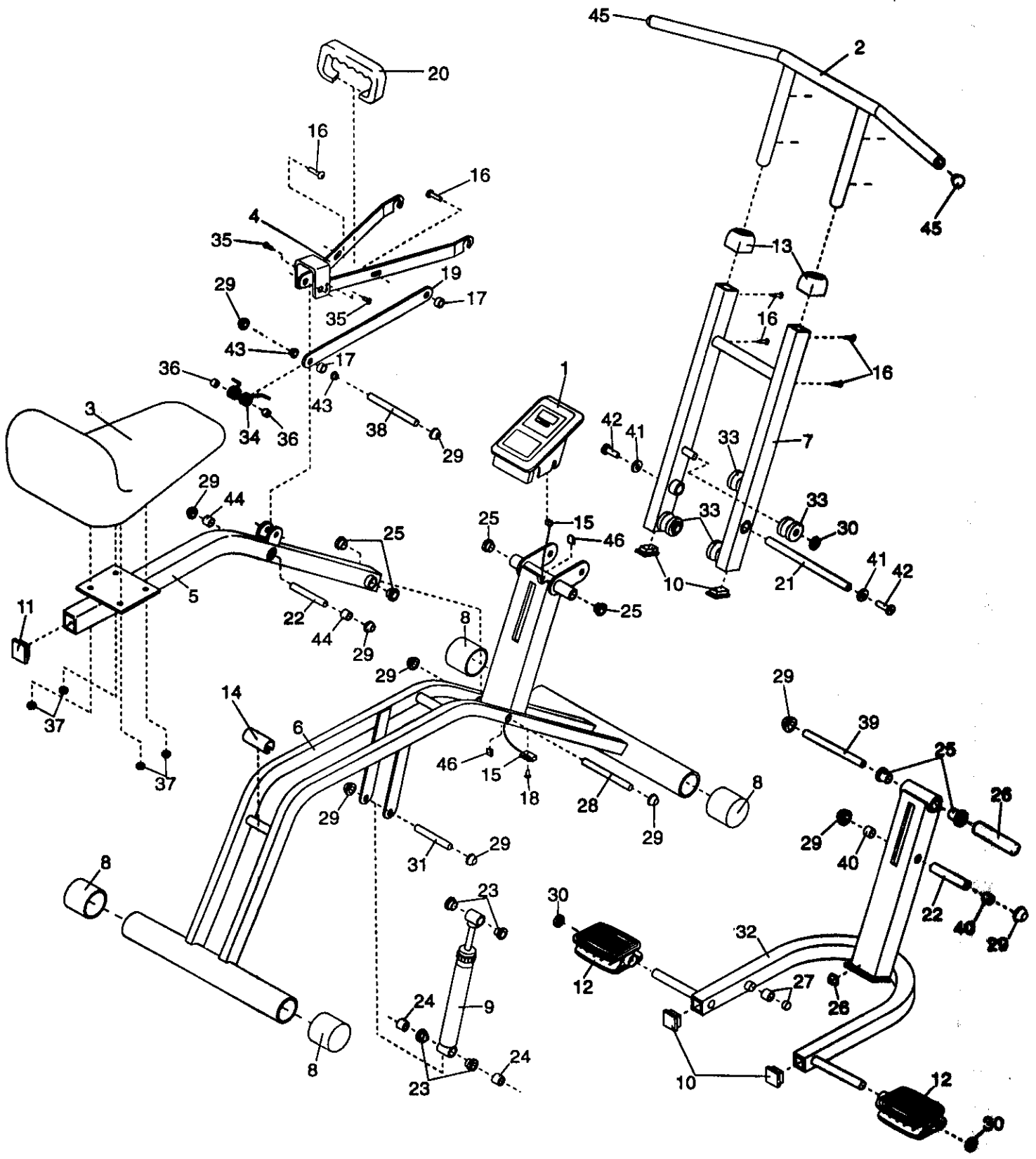


EXPLODED DRAWING—Model No. WLCR94052

R1105A



MODEL NUMBER: WLCR9405

MODEL/PART BOOK LISTING

PAGE 1

VERSION: 02

INI023P1

PRODUCT NAME: WESLO AEROBIC GLIDE PLUS

RUN DATE: 7/25/96

PRODUCT DESC:

RUN TIME: 8:01:20

KEY NUMBER	PART NUMBER	DESCRIPTION	QUANTITY
	.	AEROBIC GLIDE PLUS	0
1	130335	MONITOR	1
2	127371	HANDLEBAR W/HARDWARE	1
3	125441	SEAT	1
4	127776	LINK ARM	1
5	127370	SEAT FRAME W/HARDWARE	1
6	NSP	FRAME	1
7	127372	HANDLEBAR FRAME W/HDWR	1
8	109416	FRAME ENDCAP	4
9	127600	RESISTANCE CYL W/HARDWARE	1
10	117545	1.25" X 1.25" ENDCAP	4
11	117544	1.5" X 2" ENDCAP	2
12	126406	PEDAL W/HARDWARE	2
13	125390	DOMED ENDCAP	2
14	122296	BUMPER	1
15	127898	REED SWITCH/SENSOR WIRE	1
16	013162	#8 X 1/2" SCREW	6
17	125137	1/2" LINK ARM BUSHING	2
18	013300	#8 X 3/4" SCREW	1
19	128494	CENTER LINK ARM W/HRDWR	1
20	125399	HANDLE	1
21	125134	1/2" X 9 7/8" PIVOT AXLE	1
22	127142	1/2"X3.25" AXLE W/HDWR	2
23	106876	1/2" CYLINDER BSHG SET	2
24	117510	.925" ABS SPACER	2
25	124546	1/2" BUSHING	6
26	125755	FOAM PAD	1
	.	NOTE: ASK CUSTOMER IF	0
	.	FOAM PAD IS NEEDED ORDER	0
	.	PART #125755 . IF THE	0
	.	RUBBER BUMPON IS NEEDED	0
	.	ORDER KEY# 47	0
27	113349	MAGNET/RETAINER	1
28	127277	1/2" X 6" AXLE W/HARDWARE	1
29	103903	1/2" DOME CAP	11
30	012155	1/2" PUSH NUT	6
	.	NOTE: IF PEDAL TOOL IS	0
	127781	NEEDED SEND ASSY# 127781.	0
31	127138	1/2" X 4" AXLE W/HDWR	1
32	127369	PEDAL FRAME W/HARDWARE	1
33	128491	ROLLER	4
34	128487	SPRING	2
35	127379	#12 X .5" SCREW	2
36	126408	SPRING SPACER	2
37	121576	1/4" NUT	4
38	126288	1/2" X 3.75" AXLE W/HRDWR	1
39	124341	1/2" X 6.5" AXLE W/HDWR	1
40	125135	3/4" X 1.25" SPACER	2
41	102372	5/16" WASHER	2
42	013244	1/4" SCREW	2
43	103677	BUSHING	2
44	126517	5/8" SPACER	2
45	125022	HANDLEBAR ENDCAP	2
46	131219	CLIP	1

MODEL NUMBER: WLCR9405

MODEL/PART BOOK LISTING

PAGE 2

VERSION: 02

INI023P1

PRODUCT NAME: WESLO AEROBIC GLIDE PLUS

RUN DATE: 7/25/96

PRODUCT DESC:

RUN TIME: 8:01:20

KEY NUMBER	PART NUMBER	DESCRIPTION	QUANTITY
47	126677	RUBBER BUMPON	1
.	.	NON-ILLUSTRATED PARTS	0
#	033134	BATTERY	2
#	109591	HOT SHOCK DECAL	1
#	124622	QUICK DIAL RESIST DECAL	1
#	126542	STABILIZER DECAL	1
#	126336	STATION DECAL	1
#	125453	PEDAL TOOL	1
#	104838	GREASE	1
#	125440	WORKOUT CHART	1
#	128495	USER'S MANUAL	1
#	128496	LITERATURE PACKET	1
.	.	128495 USER'S MANUAL	1
.	.	125440 WORK OUT CHART	1
#	126525	HARDWARE KIT	1
.	.	012155 PUSH NUT	2
.	.	125453 PEDAL TOOL	1
.	.	104838 GREASE	1
.	.	117530 ENDCAP	2
.	.	125755 FOAM GRIP	1
.	.	013162 #8 X 1/2" SCREW	5
#	.	***NOTE: THESE ARE	0
#	.	ESTIMATED COSTS!!!	0