

# PART LIST—Model No. WLEL1946.0

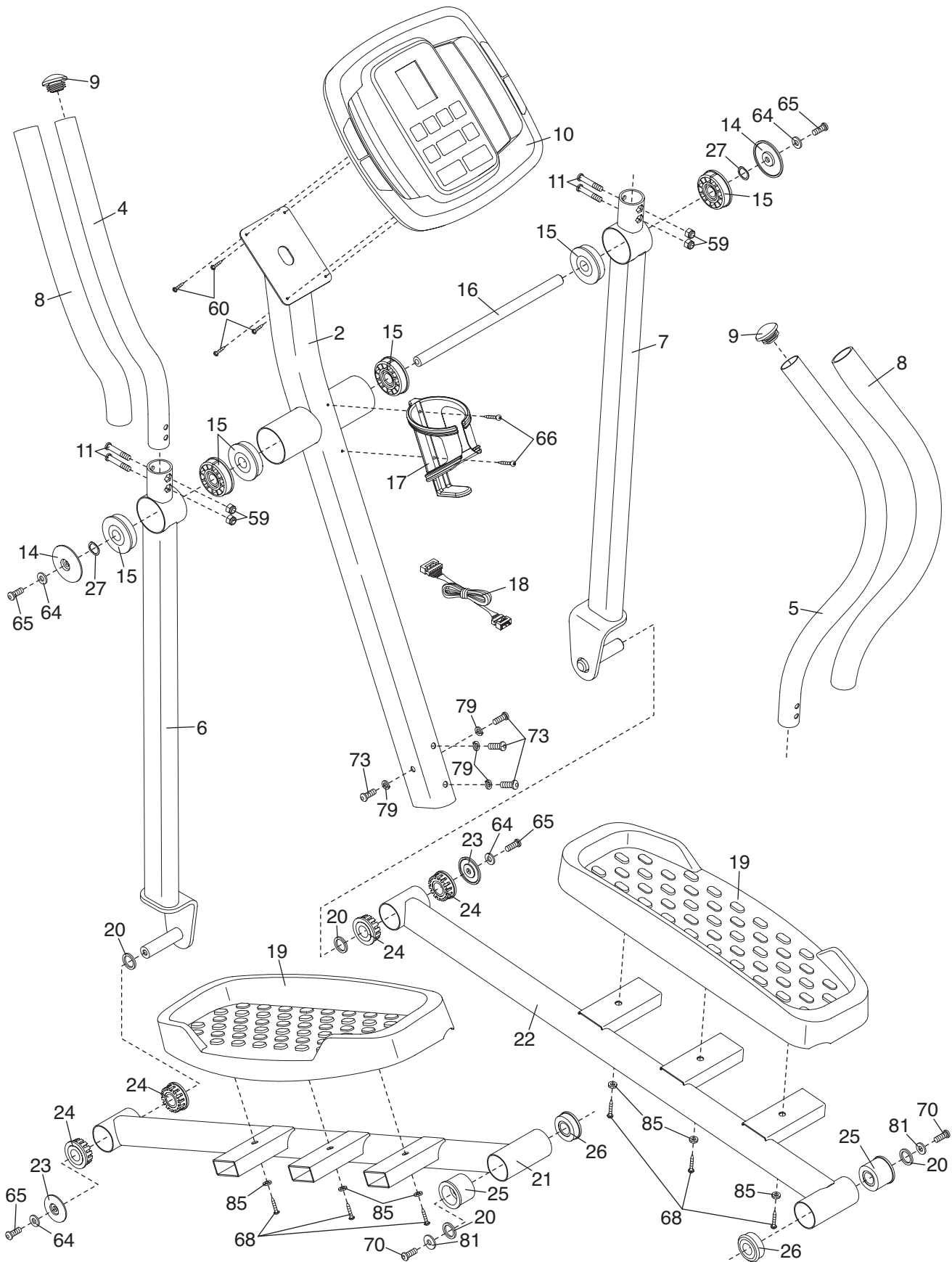
R1107A

Key No.	Qty.	Description	Key No.	Qty.	Description
1	1	Frame	46	1	Clamp
2	1	Upright	47	1	Reed Switch/Wire
3	1	Front Stabilizer	48	1	Flywheel
4	1	Left Upper Body Arm	49	1	Flywheel Axle
5	1	Right Upper Body Arm	50	2	Flywheel Bearing
6	1	Left Upper Body Leg	51	1	“C” Magnet
7	1	Right Upper Body Leg	52	1	“C” Magnet Bracket
8	2	Foam Grip	53	1	Magnet
9	2	Upper Body Endcap	54	1	Spring
10	1	Console	55	1	Idler
11	4	M8 x 45mm Button Bolt	56	1	Resistance Motor
12	2	Leveling Foot	57	2	Flange Screw
13	4	Concave Spacer	58	2	M10 x 75mm Carriage Bolt
14	2	Pivot Cover	59	8	M8 Nylon Locknut
15	6	Upper Body Bushing	60	11	M4 x 16mm Screw
16	1	Pivot Axle	61	1	M8 x 19mm Flat Head Bolt
17	1	Water Bottle Holder	62	1	Adjustment Screw
18	1	Upper Wire Harness	63	1	M6 x 18mm Bolt
19	2	Pedal	64	6	M8 Washer
20	4	Large Wave Washer	65	4	M8 x 23mm Button Screw
21	1	Left Pedal Arm	66	2	M4 x 22mm Screw
22	1	Right Pedal Arm	67	2	M10 x 60mm Button Screw
23	2	Pedal Leg Cover	68	6	M4 x 19mm Screw
24	4	Pedal Leg Bushing	69	4	M4 x 12mm Screw
25	2	Outer Crank Arm Bushing	70	2	M8 x 25mm Patch Screw
26	2	Inner Crank Arm Bushing	71	8	M5 x 25mm Screw
27	2	Wave Washer	72	3	M4 x 12mm Round Head Screw
28	2	Wheel	73	4	M8 x 19mm Patch Screw
29	2	Wheel Cover	74	2	M10 x 76mm Button Bolt
30	1	Left Side Shield	75	12	M6 Star Washer
31	1	Right Side Shield	76	1	M6 x 38mm Bolt
32	1	Left Disc	77	1	M6 Nut
33	1	Right Disc	78	4	M10 Split Washer
34	2	Disc Cover	79	4	M8 Split Washer
35	1	Rear Stabilizer	80	1	M4 x 25mm Screw
36	2	Stabilizer Endcap	81	2	M8 Large Washer
37	1	Belt	82	4	M4 Washer
38	1	Lower Wire Harness	83	1	M6 Nylon Locknut
39	1	Crank	84	5	M10 Nylon Locknut
40	2	Crank Bearing	85	6	Star Washer
41	2	Crank Snap Ring	86	4	M5 x 16mm Screw
42	1	Left Crank Arm	#	3	Hex Key
43	1	Right Crank Arm	#	1	Grease
44	1	Resistance Cable	#	1	User’s Manual
45	2	Crank Arm Spacer			

Note: “#” indicates a non-illustrated part. Specifications are subject to change without notice. See the back cover of this manual for information about ordering replacement parts.

# EXPLODED DRAWING A—Model No. WLEL1946.0

R1107A



# EXPLODED DRAWING B—Model No. WLEL1946.0

R1107A

