

PART LIST—Model No. WLEL2006.0

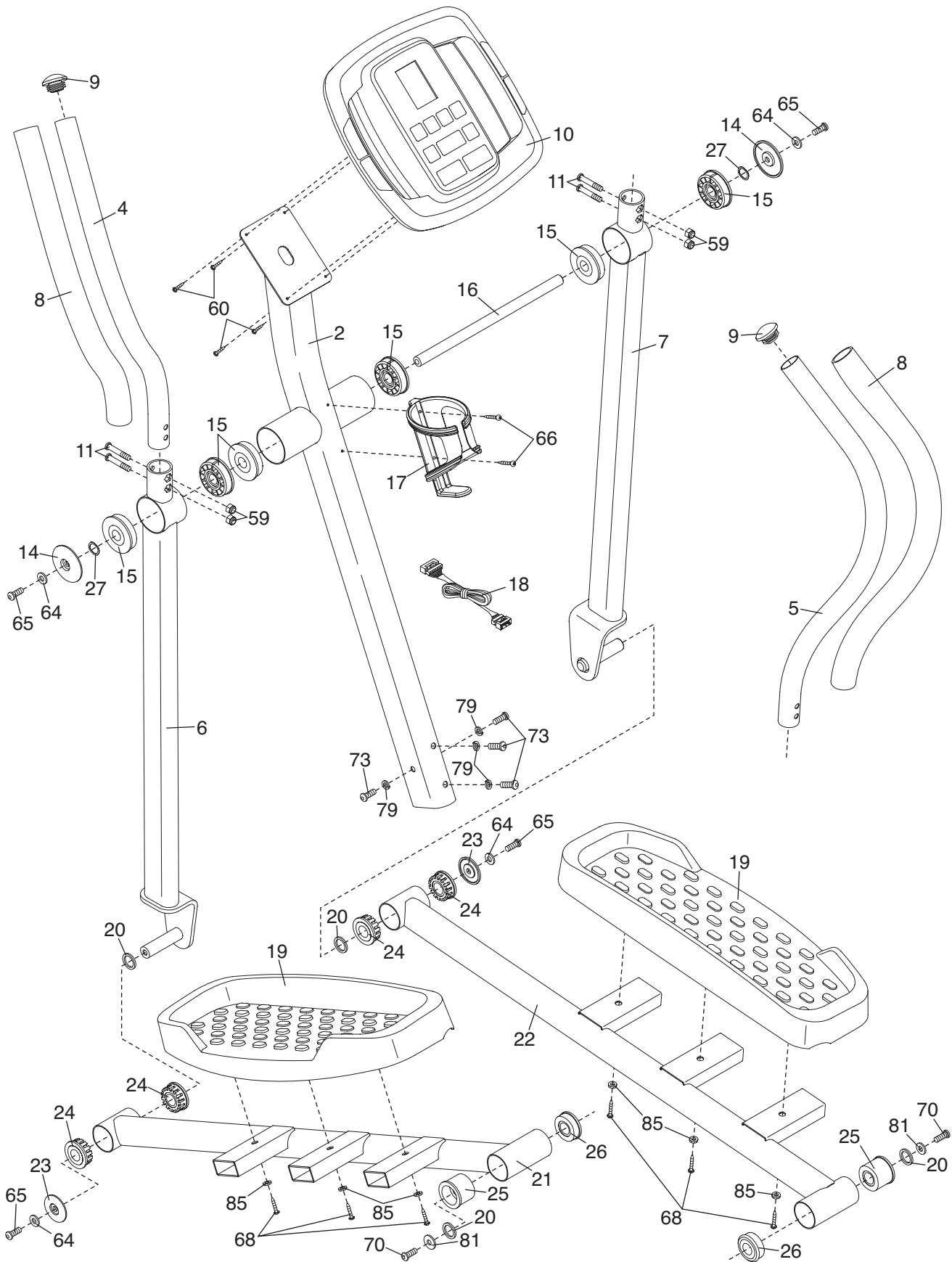
R1107A

Key No.	Qty.	Description	Key No.	Qty.	Description
1	1	Frame	46	1	Clamp
2	1	Upright	47	1	Reed Switch/Wire
3	1	Front Stabilizer	48	1	Flywheel
4	1	Left Upper Body Arm	49	1	Flywheel Axle
5	1	Right Upper Body Arm	50	2	Flywheel Bearing
6	1	Left Upper Body Leg	51	1	“C” Magnet
7	1	Right Upper Body Leg	52	1	“C” Magnet Bracket
8	2	Foam Grip	53	1	Magnet
9	2	Upper Body Endcap	54	1	Spring
10	1	Console	55	1	Idler
11	4	M8 x 45mm Button Bolt	56	1	Resistance Motor
12	2	Leveling Foot	57	2	Flange Screw
13	4	Concave Spacer	58	2	M10 x 75mm Carriage Bolt
14	2	Pivot Cover	59	8	M8 Nylon Locknut
15	6	Upper Body Bushing	60	11	M4 x 16mm Screw
16	1	Pivot Axle	61	1	M8 x 19mm Flat Head Bolt
17	1	Water Bottle Holder	62	1	Adjustment Screw
18	1	Upper Wire Harness	63	1	M6 x 18mm Bolt
19	2	Pedal	64	6	M8 Washer
20	4	Large Wave Washer	65	4	M8 x 23mm Button Screw
21	1	Left Pedal Arm	66	2	M4 x 22mm Screw
22	1	Right Pedal Arm	67	2	M10 x 60mm Button Screw
23	2	Pedal Leg Cover	68	6	M4 x 19mm Screw
24	4	Pedal Leg Bushing	69	4	M4 x 12mm Screw
25	2	Outer Crank Arm Bushing	70	2	M8 x 25mm Patch Screw
26	2	Inner Crank Arm Bushing	71	8	M5 x 25mm Screw
27	2	Wave Washer	72	3	M4 x 12mm Round Head Screw
28	2	Wheel	73	4	M8 x 19mm Patch Screw
29	2	Wheel Cover	74	2	M10 x 76mm Button Bolt
30	1	Left Side Shield	75	12	M6 Star Washer
31	1	Right Side Shield	76	1	M6 x 38mm Bolt
32	1	Left Disc	77	1	M6 Nut
33	1	Right Disc	78	4	M10 Split Washer
34	2	Disc Cover	79	4	M8 Split Washer
35	1	Rear Stabilizer	80	1	M4 x 25mm Screw
36	2	Stabilizer Endcap	81	2	M8 Large Washer
37	1	Belt	82	4	M4 Washer
38	1	Lower Wire Harness	83	1	M6 Nylon Locknut
39	1	Crank	84	5	M10 Nylon Locknut
40	2	Crank Bearing	85	6	Star Washer
41	2	Crank Snap Ring	86	4	M5 x 16mm Screw
42	1	Left Crank Arm	#	3	Hex Key
43	1	Right Crank Arm	#	1	Grease Packet
44	1	Resistance Cable	#	1	User’s Manual
45	2	Crank Arm Spacer			

Note: “#” indicates a non-illustrated part. Specifications are subject to change without notice. See the back cover of this manual for information about ordering replacement parts.

EXPLODED DRAWING A—Model No. WLEL2006.0

R1107A



EXPLODED DRAWING B—Model No. WLEL2006.0

R1107A

