

# 45 DEGREE BACK EXTENSION

16022-01

## Parts Manual

1/5/2019 3:04:40 AM

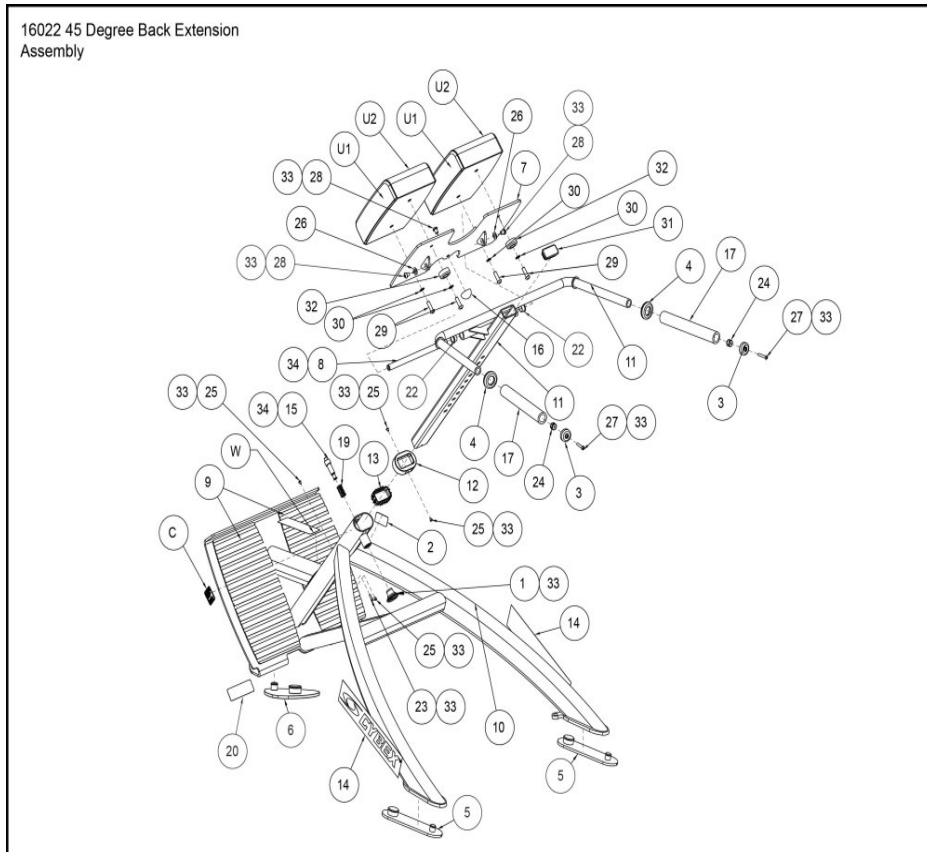


**Table of Contents**

---

[16022 Assembly](#).....3

**16022 Assembly**



Ref #	Part Number	Qty	Description
1	11040-440	1	KNOB
U1	4800-416	2	COVERED CUSHION SA 8 X 11.5 RA Custom
U2	4800-419	2	Wear Cover SA 8 x 11.5 Radius Custom
2	11040-790	1	NLA: DECAL, MADE IN THE USA
3	11090-374	2	END CAP
4	11090-376	2	RING HANDLE GRIP
5	12090-322	2	PAD FOOT
6	16010-311	2	Pad Foot
7	16020-202	1	W Cushion Plate Custom
8	16020-323	1	Shaft Pivot
9	16020-325	2	Non-Slip
10	16022-200	1	W/ FRAME Custom
11	16022-201	1	W HANDLE Custom
12	16060-316	1	PLASTIC GUIDE
13	16060-317	1	PLASTIC GUIDE
14	3900-434	2	NLA: DECAL CYBEX 3.25 X 14
15	4505-329	1	PIN DETENT
16	4505-331	1	BUMPER 1.50 DIA
17	4605-524	2	GRAB GRIP 10.25
19	BS070201	1	COM SPRING .56 ID X .66 OD X 1.50 LG
20	CM000244	1	DECAL, CAPACITY
22	FB130211	2	BRG FLG 17MM X 19MM X 12MM

Ref #	Part Number	Qty	Description
23	HC572814	1	SHCS .190-10-24 X .625
24	HF449063	2	INSERT 3-4X1-4-20 CONNECTOR
25	HM583208	4	SCREW,10-32X.25,TRHD PHIL
26	HS347600	2	WASHER SAE .375
27	JC620422	2	BHSCS .250-20 X 1.50
28	JC700412	3	BHSCS .375-16 X .50
29	JC700420	4	BHSCS .375-16 X 1.25
30	JS347400	4	LOCKWASHER INT TOOTH .375
31	PP090217	1	INSERT, PLASTIC 1.25 X 2.25
32	PR060003	2	BUMPER RECESS
33	YA000008	1	ADH THRD LKR REM NO. 242
34	YG000002	1	NLA: Please use Lithium Grease
W	DE000001	1	Decal Warning Custom
C	8500-025	1	DECAL CAUTION Custom

