

OLYMPIC INCLINE BENCH

16050-02

Parts Manual

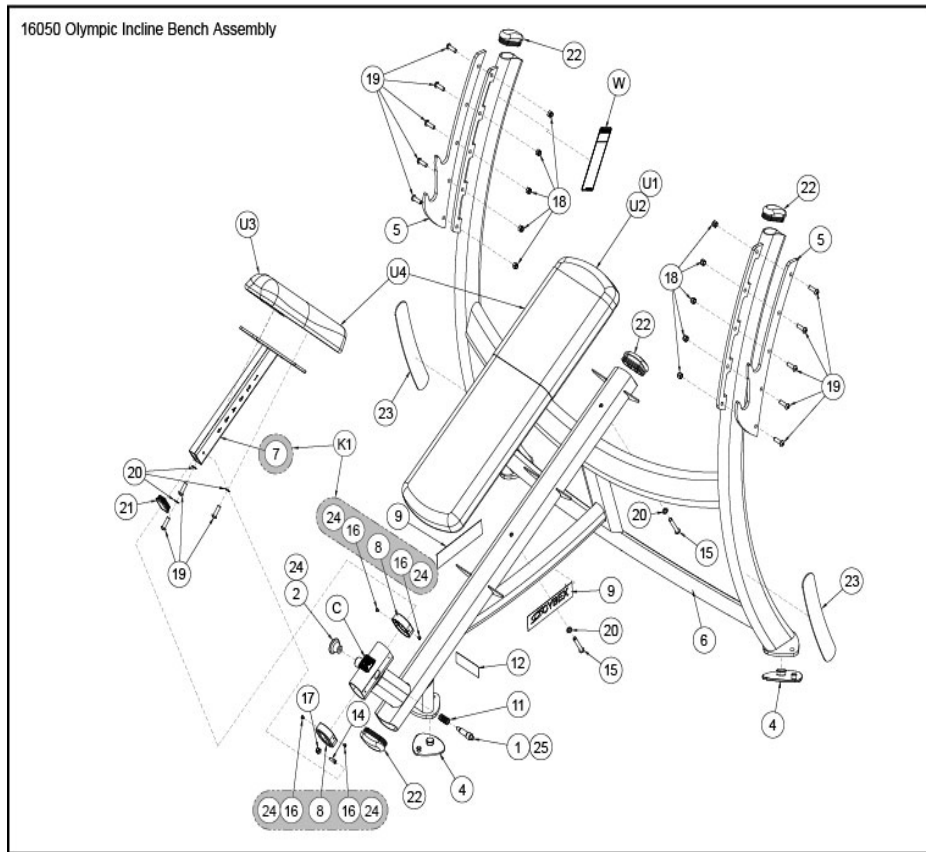
1/5/2019 3:07:34 AM



Table of Contents

[16050 Assembly](#).....3
[16220 Weight Attachment](#).....5

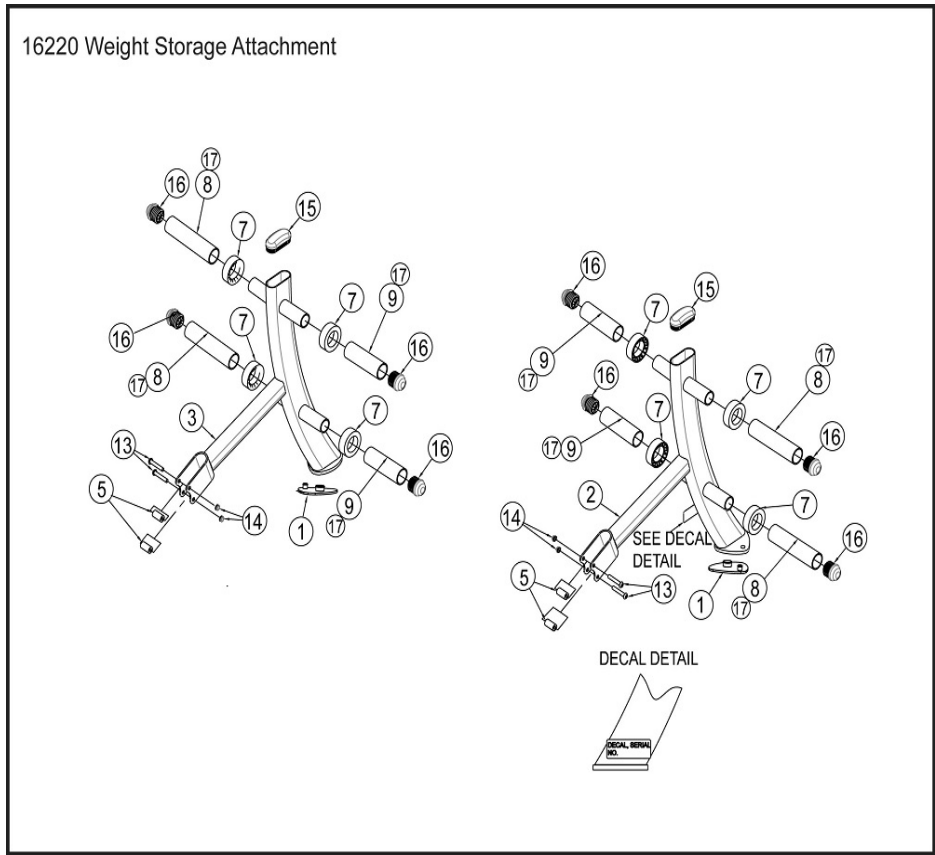
16050 Assembly



| Ref # | Part Number | Qty | Description |
|-------|-------------|-----|--|
| K1 | 16050K001 | 1 | KIT, OLYMPIC INCLINE BENCH, SEAT SUPPORT |
| U1 | 4800-472 | 1 | COVERED CUSHION S/A, 12 X 36 Custom |
| 1 | 4505-329 | 1 | PIN DETENT |
| U2 | 4800-475 | 1 | WEAR COVER S/A 12 X 36 Custom |
| 2 | 11040-440 | 1 | KNOB |
| U3 | 4800-172 | 1 | CUSHION SA BIKE 15in MOLDED Custom |
| 4 | 16010-311 | 1 | Pad Foot |
| U4 | 16050-011 | 1 | SET CUSHION Custom |
| 5 | 16010-314 | 3 | BAR PLATE |
| 6 | 16050-200 | 2 | W Main Frame Custom |
| 7 | 16050-203 | 1 | W/ ADJUSTING TUBE |
| 8 | 16060-316 | 1 | PLASTIC GUIDE |
| 9 | 3900-445 | 2 | DECAL CYBEX 1.00 HOR BLACK |
| 11 | BS070201 | 2 | COM SPRING .56 ID X .66 OD X 1.50 LG |
| 12 | CM000247 | 1 | DECAL, CAPACITY |
| 14 | HC622815 | 1 | SHCS .250-20 X .750 |
| 15 | HC700430 | 1 | BHSCS .375-16 X 2.50 |
| 16 | HM583208 | 1 | SCREW, 10-32X.25, TRHD PHIL |
| 17 | HN625200 | 2 | LOCKNUT .250-20 NYLON HVY |
| 18 | HN704901 | 4 | LOCKNUT .375-16 NYLON |
| 19 | JC700420 | 1 | BHSCS .375-16 X 1.25 |
| 20 | JS347400 | 10 | LOCKWASHER INT TOOTH .375 |

| Ref # | Part Number | Qty | Description |
|-------|-------------|-----|--------------------------------|
| 21 | PP090217 | 13 | INSERT, PLASTIC 1.25 X 2.25 |
| 22 | PP130002 | 5 | INSERT DOMED PLASTIC |
| 23 | PR520006 | 1 | PAD |
| 24 | YA000201 | 4 | ADH THRD LKR REM .02 OZ 242 |
| 25 | YG000002 | 1 | NLA: Please use Lithium Grease |
| C | 4520-362 | 1 | DECAL SEAT CAUTION Custom |
| W | DE000001 | 1 | Decal Warning Custom |
| - | 16050-999 | 1 | Omanual Olym Incl Bench Custom |

16220 Weight Attachment



| Ref # | Part Number | Qty | Description |
|-------|-------------|-----|--|
| 1 | 16010-311 | 2 | Pad Foot |
| 2 | 16220-200 | 1 | W weight storage LH Custom |
| 3 | 16220-201 | 1 | W weight storage RH Custom |
| 4 | 16220-303 | 1 | INSTRUCTION SHEET, WEIGHT STORAGE ATTACHMENT |
| 5 | 16220-304 | 4 | BUSHING |
| 6 | 51198 | 1 | WARRANTY BOOKLET |
| 7 | 5220-367 | 8 | SPACER PLASTIC |
| 8 | 5490P010 | 4 | P WEIGHT TUBE 8.00 |
| 9 | 5340P003 | 4 | P WEIGHT TUBE 6.00 |
| 13 | HC700428 | 4 | BHSCS .375-16 X 2.25 |
| 14 | HN704902 | 4 | LOCKNUT NYLON .375-16 |
| 15 | PP130004 | 2 | Insert Domed Plastic |
| 16 | PP130006 | 8 | Insert Plastic End |
| 17 | YA000211 | 1 | NLA: ADH RTNG CMPD ANEROBIC 680 |

