

# ADJUSTABLE BENCH - LOCKING

19100-01

## Parts Manual

1/5/2019 3:53:23 AM

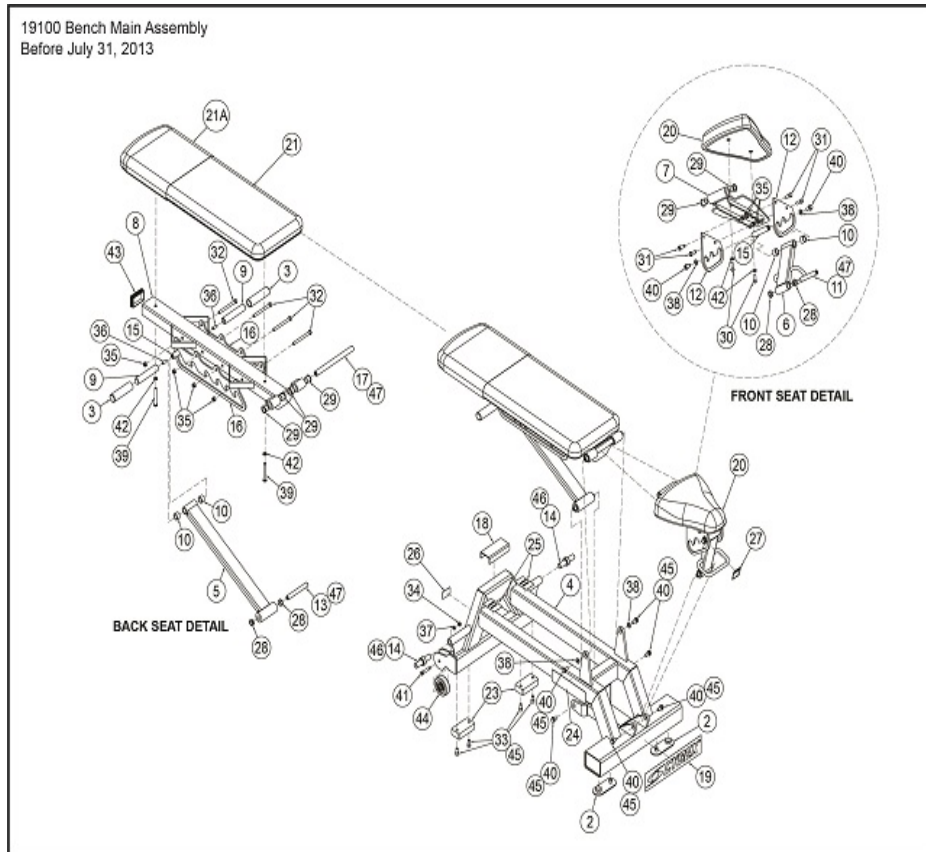


Table of Contents

---

[19100-01 Main Assembly.....](#)3

19100-01 Main Assembly



| Ref # | Part Number | Qty | Description                             |
|-------|-------------|-----|---|
| 1     | 11040-790   | 1   | NLA: DECAL, MADE IN THE USA             |
| 2     | 13000-353   | 2   | Foot Pad                                |
| 3     | 16210-323   | 2   | Grip Vinyl                              |
| 4     | 19100-200   | 1   | W MAIN FRAME Custom                     |
| 5     | 19100-201   | 1   | W ADJUSTING TUBE                        |
| 6     | 19100-202   | 1   | W HANDLE                                |
| 7     | 19100-203   | 1   | W CUSHION PLATE                         |
| 8     | 19100-204   | 1   | W CUSHION TUBE                          |
| 9     | 19100-318   | 2   | HANDLE                                  |
| 10    | 19100-324   | 4   | PLATED COLLAR                           |
| 11    | 19100-333   | 1   | PIN, PIVOT                              |
| 12    | 19100-334   | 2   | POSITION PLATE                          |
| 13    | 19100-335   | 1   | PIN, PIVOT                              |
| 14    | 19100-336   | 2   | LATCH PIN                               |
| 15    | 19100-337   | 2   | PIVOT PIN                               |
| 16    | 19100-338   | 2   | LATCH PLATE                             |
| 17    | 19100-339   | 1   | PIN, PIVOT                              |
| 18    | 19100-340   | 1   | BUMPER                                  |
| 19    | 3900-448    | 1   |   |
| 19    | 3900-447    | 1   | DECAL CYBEX 1.94 HOR BLACK              |
| 20    | 4800-168    | 1   | CUSHION SA BIKE SEAT 12IN MOLDED Custom |
| 21A   | 4800-431    | 1   | WEAR COVER SA 12 X 36 Custom            |

| Ref # | Part Number | Qty | Description                                |
|-------|-------------|-----|--|
| 21    | 4800-428    | 1   | COVERED CUSHION S/A, 12 X 36 Custom        |
| 22    | 51198       | 1   | WARRANTY BOOKLET                           |
| 23    | 5220-305    | 2   | BUMPER 2.00 X 4.00                         |
| 24    | DE000003    | 1   | Decal Warning Custom                       |
| 25    | DE000022    | 2   | Decal Caution Custom                       |
| 26    | CM000254    | 1   | DECAL, CAPACITY                            |
| 27    | DE000019    | 1   | Decal Caution Custom                       |
| 28    | FB130205    | 4   | BRG FLG .62 X .75 .38 LG                   |
| 29    | FB130212    | 6   | BUSHING FLANGE FOOTPLATE.75ID              |
| 30    | JC700420    | 2   | BHSCS .375-16 X 1.25                       |
| 31    | HC701217    | 4   | HX HD CAP SC .375-16 X 1.000               |
| 32    | HC701242    | 4   | HX HD CAP SC .375-16 X 4.000               |
| 33    | HC702815    | 4   | SHCS .375-16 X .750                        |
| 34    | HN664900    | 2   | LOCKNUT .312-18 NYLON INSERT               |
| 35    | HN704901    | 8   | LOCKNUT .375-16 NYLON                      |
| 36    | HP707017    | 2   | STUD .375-16 X 1.00                        |
| 37    | HS328300    | 2   | LOCKWASHER SPLIT .312                      |
| 38    | HS347600    | 4   | WASHER SAE .375                            |
| 39    | JC700434    | 2   | BHSCS .375-16 X 3.00                       |
| 40    | JC701115    | 8   | HX HD FLG SERRATED CAP SCREW .375-16 X .75 |
| 41    | JD343322    | 2   | S BOLT .375 X 1.50 .312-18                 |
| 42    | JS347400    | 4   | LOCKWASHER INT TOOTH .375                  |
| 43    | PP090206    | 1   | INSERT PLASTIC 2.0 x 3.0 11 Ga             |
| 44    | WW130000    | 2   | WHEEL 3IN DIA                              |

