

Strength Multi (2LP, 3AP, TP)

SM63

Parts Manual

1/5/2019 16:40:16 PM



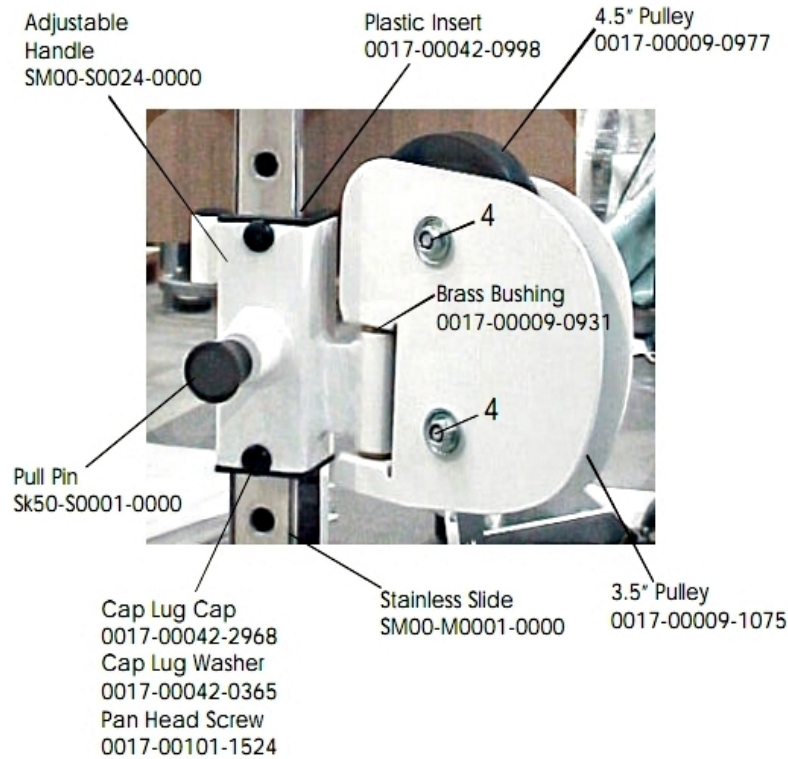
NO IMAGE AVAILABLE

Table of Contents

[Adjustable Pulley Assembly](#).....3
[Cross-Over Bar Assembly](#).....4
[Grips Assembly](#).....5
[Hardware Assembly](#).....6
[Lat Bench Comonents](#).....7
[Pulley Hardware Assembly](#).....8
[Structure Assembly](#).....9

** Upholstery & Frame Colors are listed at the end of the Parts Manual **

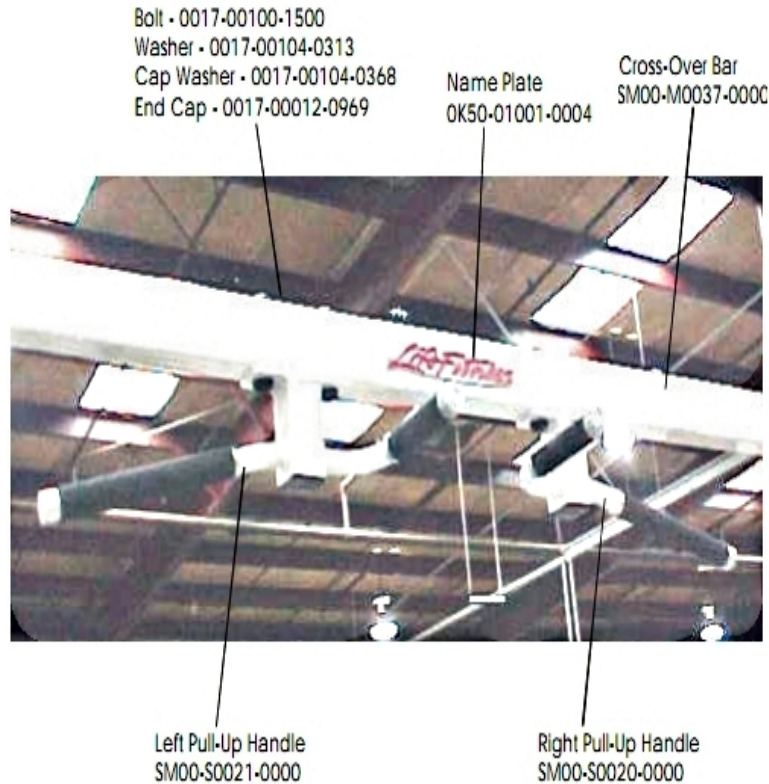
Adjustable Pulley Assembly



Ref #	Part Number	Qty	Description
4	0017-00104-0368	1	Hardware: Flanged Finishing Washer - Large (RHW205)
4	0017-00101-1413	1	Hardware; 3/8 16X28 UNS HEX; STR
4	0017-00103-0217	1	Hardware: Nut 3/8 -16 Thin D ST ZN B
-	0017-00101-1524	1	Hardware: 8 X 1/4 Pan Head Bolt
-	3237801	1	Pulley 4.5" OD
-	SM00-S0024-0000	1	Jungle Adj PLY Guide/Selector
-	0017-00042-0968	1	Finishing Cap - Small (RH10)
-	0017-00009-1075	1	Pulley: 3.5" N/D
-	SK50-S0001-0000	1	2.75" Pull Pin Kit; Gen Purchased
-	SM00-M0001-0000	1	JUNGLE SS SLIDE; STRENGTH
-	0017-00042-0998	1	Seat Guide
-	0017-00009-0931	1	Spacer: Flange: 7/16" Id Type Brass BU N/D

** Upholstery and Frame Colors are list at the end of the Parts Manual **

Cross-Over Bar Assembly



Ref #	Part Number	Qty	Description
-	SM00-S0021-0000	1	HANDLE; SM00; JNGDIP RT; STREN
-	SM00-S0020-0000	1	HANDLE; SM00; JNGDIP LT; STREN
-	SM00-S0010-0000	1	NLA: JUNGLE CROSS MEMBER(SM80)
-	OK50-01001-0004	1	Decal: Name Plate 9 1/4" Chrome Plated Plastic
-	0017-00104-0368	1	Hardware: Flanged Finishing Washer - Large (RHW205)
-	0017-00104-0313	1	Hardware: 3/8 Flat Washer; Strength

** Upholstery and Frame Colors are list at the end of the Parts Manual **

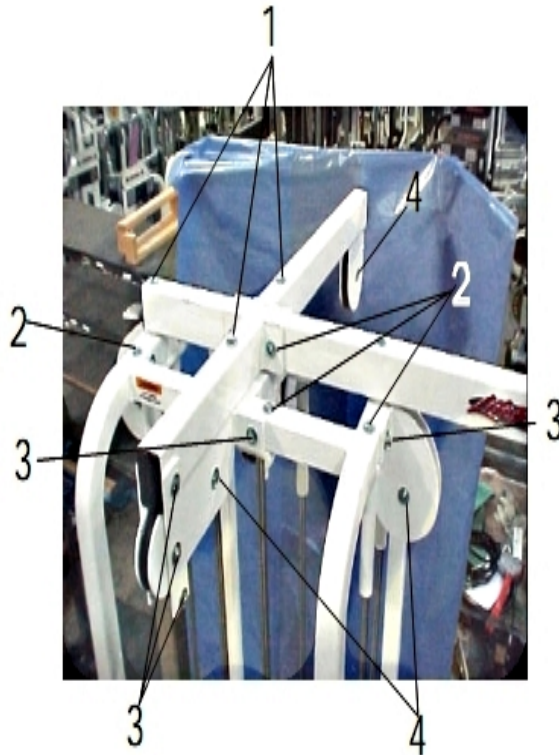
Grips Assembly



Ref #	Part Number	Qty	Description
-	SK50-S0012-0000	1	Lat Pull Handlebar
-	0017-00100-0181	1	Snap Ring; 3/8"; Carabiner; Strength
-	8219601	1	Handle CM/MJ Short Strap
-	SK50-S0025-0000	1	Kit; Serv; Tricep Handle; Strength
-	7732301	1	Handle MJRW

** Upholstery and Frame Colors are list at the end of the Parts Manual **

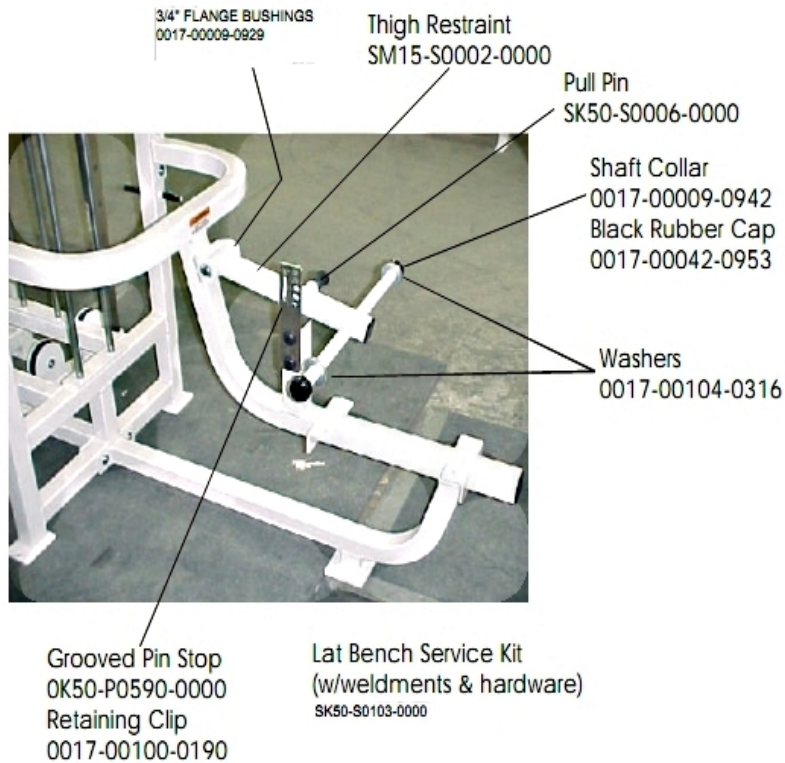
Hardware Assembly



Ref #	Part Number	Qty	Description
1	0017-00103-0233	1	Hardware: Nut 7/16-14 Jam D ST ZN B
1	0017-00101-1561	1	Hardware: 7/16-16X96 UNS HEX BLT G5 ZN B
1	0017-00104-0363	1	Hardware: Washer 437-.734-065 FL-D ST ZN B
1	0017-00104-0366	1	Hardware: Flanged Finishing Washer - Large (RHW206)
2,3	0017-00042-0969	2	Finishing Cap - Large (RH20)
2,3,4	0017-00104-0368	3	Hardware: Flanged Finishing Washer - Large (RHW205)
2,3	0017-00104-0313	2	Hardware: 3/8 Flat Washer; Strength
2	0017-00101-1422	1	Hardware: 3/8 -16X48 UNS HEX BLT G5 ZN B
3,4	0017-00103-0217	2	Hardware: Nut 3/8 -16 Thin D ST ZN B
3	0017-00101-1408	1	Hardware: 3/8 -16X44 UNS HEX BLT G5 ZN B
4	0017-00101-1413	1	Hardware; 3/8 16X28 UNS HEX; STR

** Upholstery and Frame Colors are list at the end of the Parts Manual **

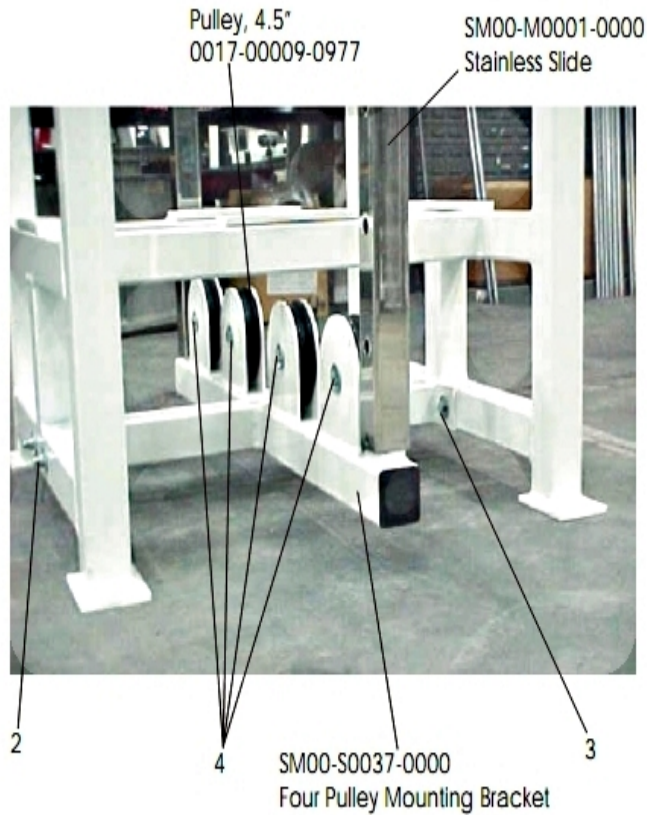
Lat Bench Components



Ref #	Part Number	Qty	Description
-	SK50-S0006-0000	1	4.5 Soft Tip PPK; SL50 ST05
-	0017-00042-0953	1	Cap; Black Rubber; 1.375 IN X.750
-	SM15-S0002-0000	1	Restraint, Thigh
-	OK50-P0590-0000	1	Hardware: Pin, Grooved Stop
-	0017-00104-1383	1	Hardware: 1IN SAE F/W ZC
-	0017-00009-0929	1	Spacer: Flange: 3/4" ID Oilite Bushing N/D
-	0017-00100-0190	1	Ring C .375 5103-37 ST ZN
-	0017-00009-0942	1	Collar: Shaft; 1.020" ID N/D

** Upholstery and Frame Colors are list at the end of the Parts Manual **

Pulley Hardware Assembly



Ref #	Part Number	Qty	Description
2,3	0017-00042-0969	2	Finishing Cap - Large (RH20)
2,3	0017-00104-0313	2	Hardware: 3/8 Flat Washer; Strength
2	0017-00101-1422	1	Hardware: 3/8 -16X48 UNS HEX BLT G5 ZN B
2,3,4	0017-00104-0368	3	Hardware: Flanged Finishing Washer - Large (RHW205)
3,4	0017-00103-0217	2	Hardware: Nut 3/8 -16 Thin D ST ZN B
3	0017-00101-1408	1	Hardware: 3/8 -16X44 UNS HEX BLT G5 ZN B
4	0017-00101-1413	1	Hardware; 3/8 16X28 UNS HEX; STR
-	SM00-S0037-0000	1	NLA: BRACKET, PULLEY MOUNTING
-	3237801	1	Pulley 4.5" OD
-	SM00-M0001-0000	1	JUNGLE SS SLIDE; STRENGTH

** Upholstery and Frame Colors are list at the end of the Parts Manual **

Structure Assembly



Ref #	Part Number	Qty	Description
-	SM00-M0002-0000	1	NLA: BRACKET, ADJ. PULLEY ASSM.
-	SM00-S0026-0000	1	NLA: JUNGLE DBL PULLEY; STRENGTH
-	SM00-S0028-0000	1	NLA: HSG;JNGL PUL; LG W/BRKT;STRENG
-	SM00-S0038-0000	1	NLA: SUB JUNGLE; STRENGTH
-	SM00-S0039-0000	1	NLA: SUB JUNGLE
-	SM00-S0045-0000	1	Top Plate Spacer
-	SM00-S0030-0000	1	NLA: JUNGLE LAT PULLEY W/ BRKT

** Upholstery and Frame Colors are list at the end of the Parts Manual **

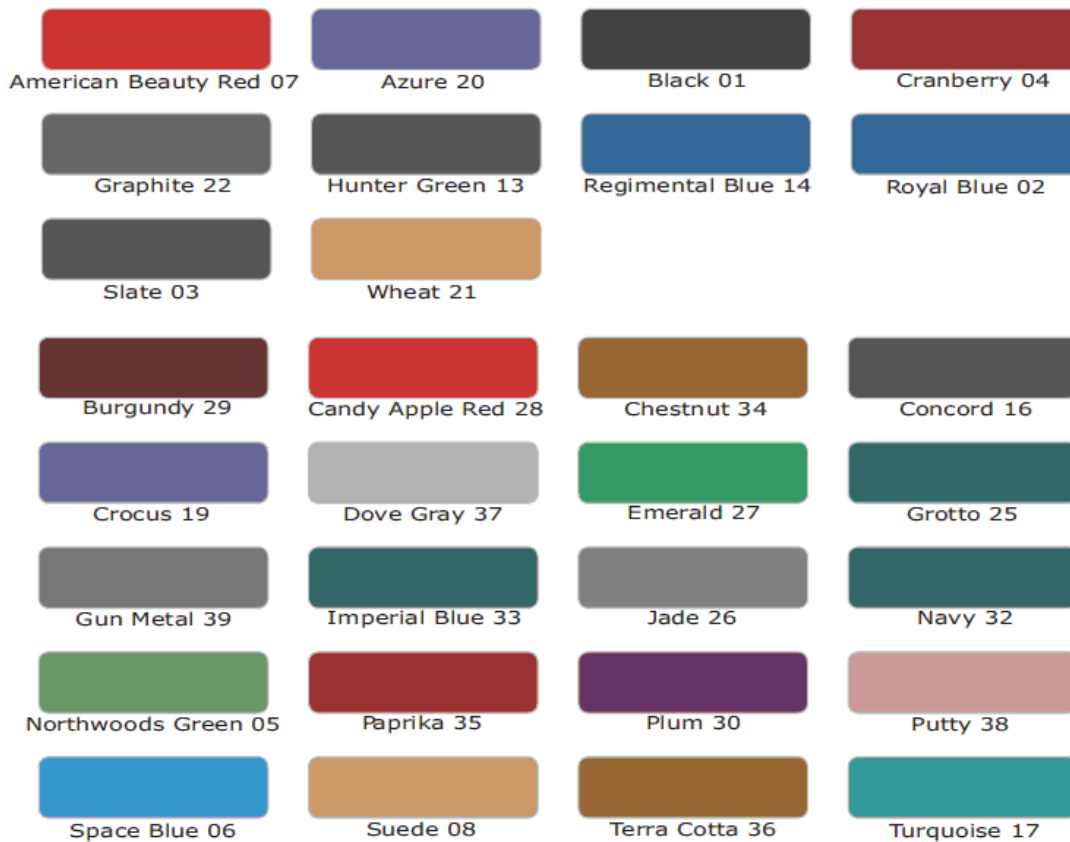
Frame and Upholstery Color Chart

Frame Colors



Note: Include frame color in order notes when ordering frame assemblies or weldments.

Upholstery Colors



Replace '99' with the above color suffix when ordering pads (i.e. 7412399 = 7412301 BLACK)

