

# Signature Series - Smith Machine

SSM

## Parts Manual

1/5/2019 16:56:00 PM



**LifeFitness**  
WHAT WE LIVE FOR

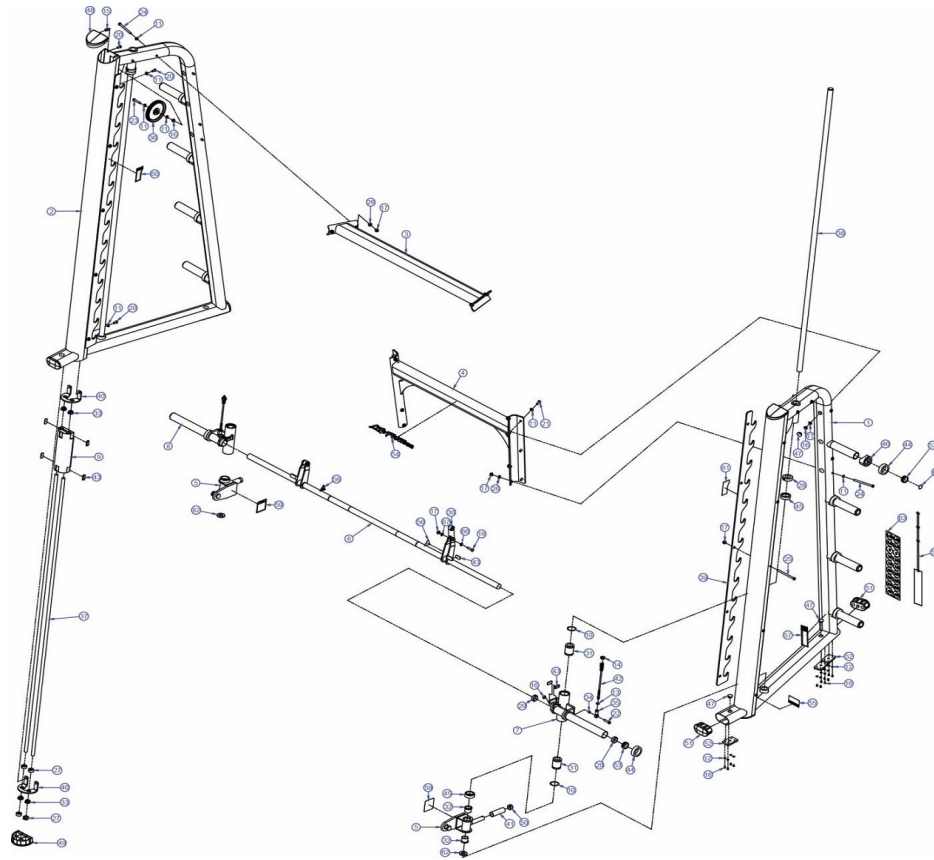
Table of Contents

---

[Component Assembly](#).....3  
[Hardware Bags](#).....5

\*\* Upholstery & Frame Colors are listed at the end of the Parts Manual \*\*

## Component Assembly

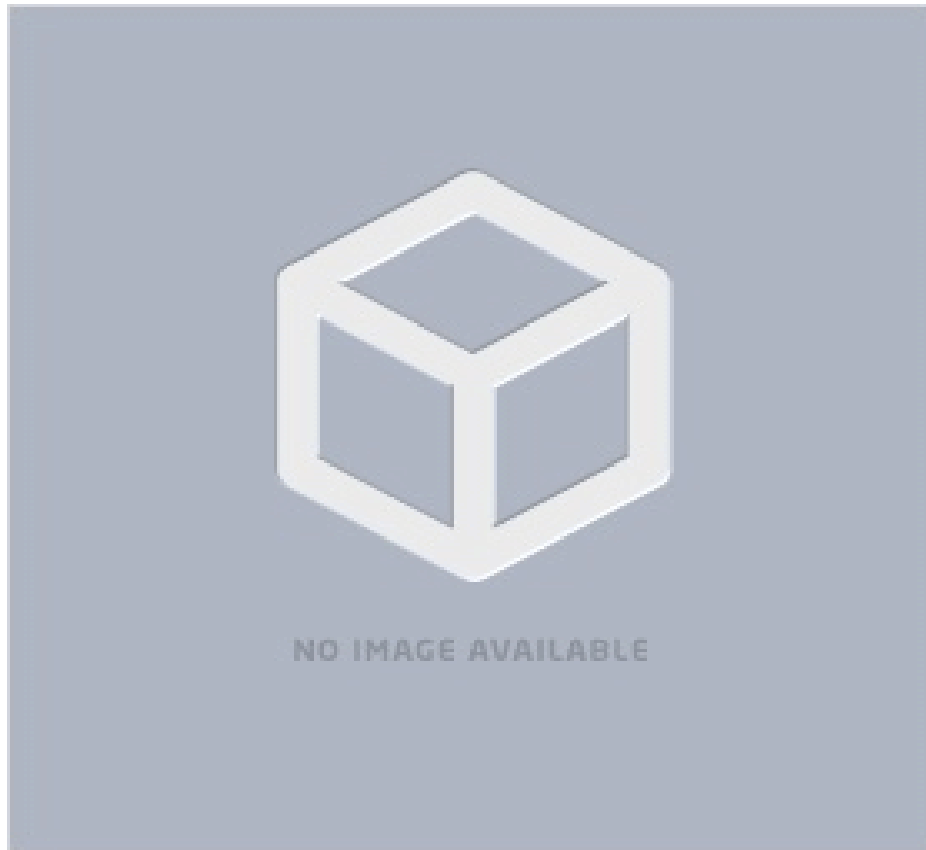


Ref #	Part Number	Qty	Description
1	8294200	1	Weldment SSM Frame Left
2	8294300	1	Weldment SSM Frame Right
3	8294700	1	Weldment SSM Brace Front
4	8294900	1	Weldment SSM Brace Back
5	9329901	1	ASSY, H/SSM BAR STOP, RIGHT
6	9329801	1	ASSY, H/SSM BAR STOP, LEFT
7	9209401	1	Weldment SSM Carriage Left
8	9209501	1	Weldment SSM Carriage Right
9	8328001	2	D-Tube Counter Weight
10	3202602	4	Retaining Ring 2.25" D
11	3273303	36	Hardware: WasherR, 3/8, THRU-HARDENED
12	3114407	24	Hardware: Flat Washer
13	3236901	2	Hardware: Nut Hex Jam 10 MM
14	3236902	2	Hardware: Nut 16 MM ID
15	3238601	4	Blind Thread Insert - 1.5"
16	3236801	10	Hardware: Nut 10 MM ID
17	7335401	22	Hardware: Nut 10 MM ID
18	3270601	1	Hardware: Screw 3/8"
19	3223303	2	Hardware: Hex Bolt
20	3236201	12	Hardware: Screw 20MM
21	3236202	6	Hardware: Screw 25MM
22	3236205	2	Hardware: Screw 40 MM

Ref #	Part Number	Qty	Description
23	3236207	2	Hardware: Screw 50MM
24	3236220	10	Hardware: Screw 130MM
25	3236221	10	Hardware: Screw 140MM
26	7634701	10	Spacer CM/MJ .565 X .815
27	3103301	8	Shaft Collar 3/4" ID Zinc
28	3265501	2	Shaft Collar
30	3248401	1	Cam Follower Torrington
31	8271101	4	Linear Ball Bearing
32	3104907	4	Flanged Bearing 1.25" ID 1.50" OD
33	7337901	8	Bushing Guide Rod
34	7489402	2	Bushing
35	3237901	2	Rod End Metric Female
36	3239601	2	Pulley - 6"
37	7328620	4	Guide Rod .75" OD 85.00" L
38	8274402	2	Guide Rod
39	8980801	2	PLATE, SSM/HSSM, GUN RACK
40	8299401	4	Bracket SSM Guide Rod
41	3235801	2	Grip - 1.25" OD
42	8328401	2	Cable SSM
43	7570801	14	Guard Paint 1.25 X .75 X .25
44	7671601	10	Bumper Weight Horn/Rod
45	7767601	4	Bumper PS Increment
46	8031801	8	Weight Horn Ring
47	3237403	10	Plug 1" Hole
48	7326201	2	Cap, D-Tube-Top White
49	7326301	2	Cap D-Tube-Bottom
50	7662901	2	Grip Cap
51	7800401	4	Large Cap
52	7810801	6	Rubber Foot Pad
53	8078001	10	End Cap
54	7348001	1	Label Life Fitness Logo
55	7571301	1	Label Serial Number
56	8039501	2	Label Warning Triangle 10-0099-067 BNR
57	8220099	1	Label, ASTM, Select Vertical - Custom
58	8343101	1	Tag - Bolt To Floor
59	8349399	2	Label, SSM, Bar Stop - Custom
60	8349599	1	Label, SSM, Bar Rack Right - Custom
61	8349699	1	Label, SSM, Bar Rack Left - Custom
62	7713801	2	Bumper
63	8351801	1	Labe Sheet Weight Horn

\*\* Upholstery and Frame Colors are list at the end of the Parts Manual \*\*

## Hardware Bags



Ref #	Part Number	Qty	Description
-	3236801	8	Hardware: Nut 10 MM ID
KIT	SSM-HDWR	1	Assembly SSM Hardware Bag
-	7634701	10	Spacer CM/MJ .565 X .815
-	7348101	6	Hardware: Spacer Washer
-	3236205	2	Hardware: Screw 40 MM
-	7489402	2	Bushing
-	7335401	10	Hardware: Nut 10 MM ID
-	3273303	22	Hardware: WasherR, 3/8, THRU-HARDENED
-	3236901	2	Hardware: Nut Hex Jam 10 MM
-	3236220	10	Hardware: Screw 130MM
-	3202602	4	Retaining Ring 2.25" D
-	3236204	6	Hardware: Screw 35MM

\*\* Upholstery and Frame Colors are list at the end of the Parts Manual \*\*

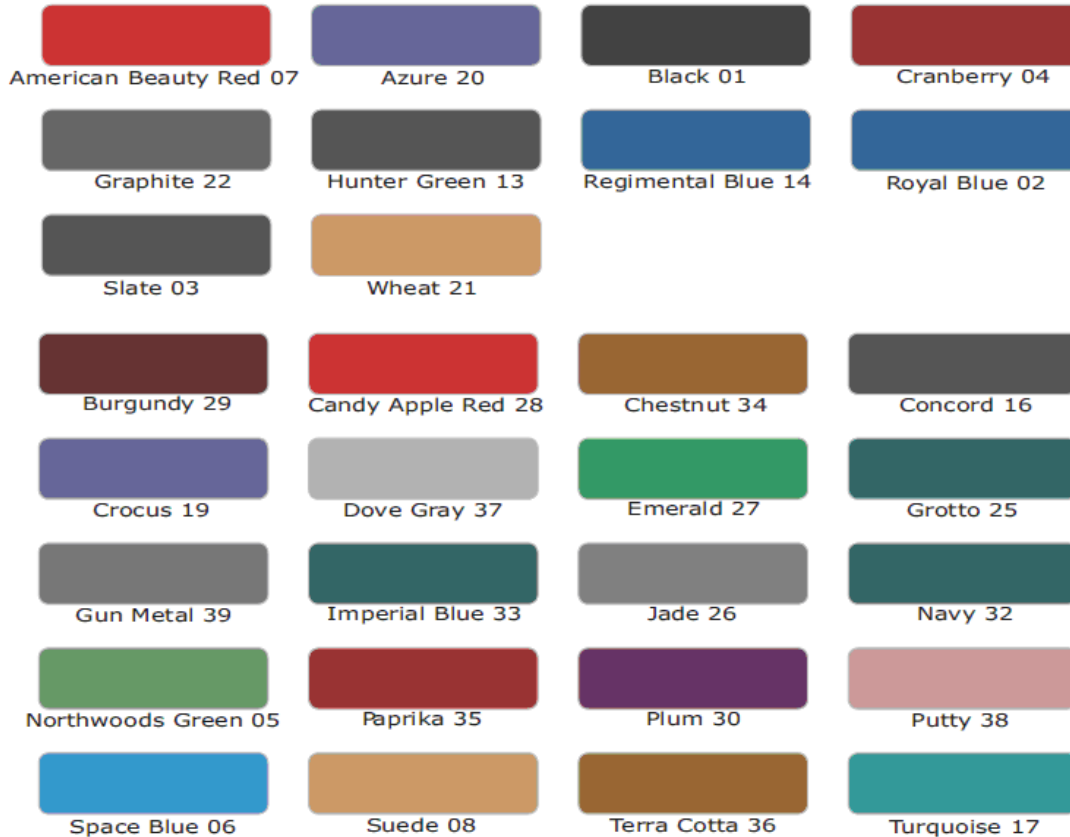
# Frame and Upholstery Color Chart

## Frame Colors



Note: Include frame color in order notes when ordering frame assemblies or weldments.

## Upholstery Colors



Replace '99' with the above color suffix when ordering pads (i.e. 7412399 = 7412301 BLACK)

