

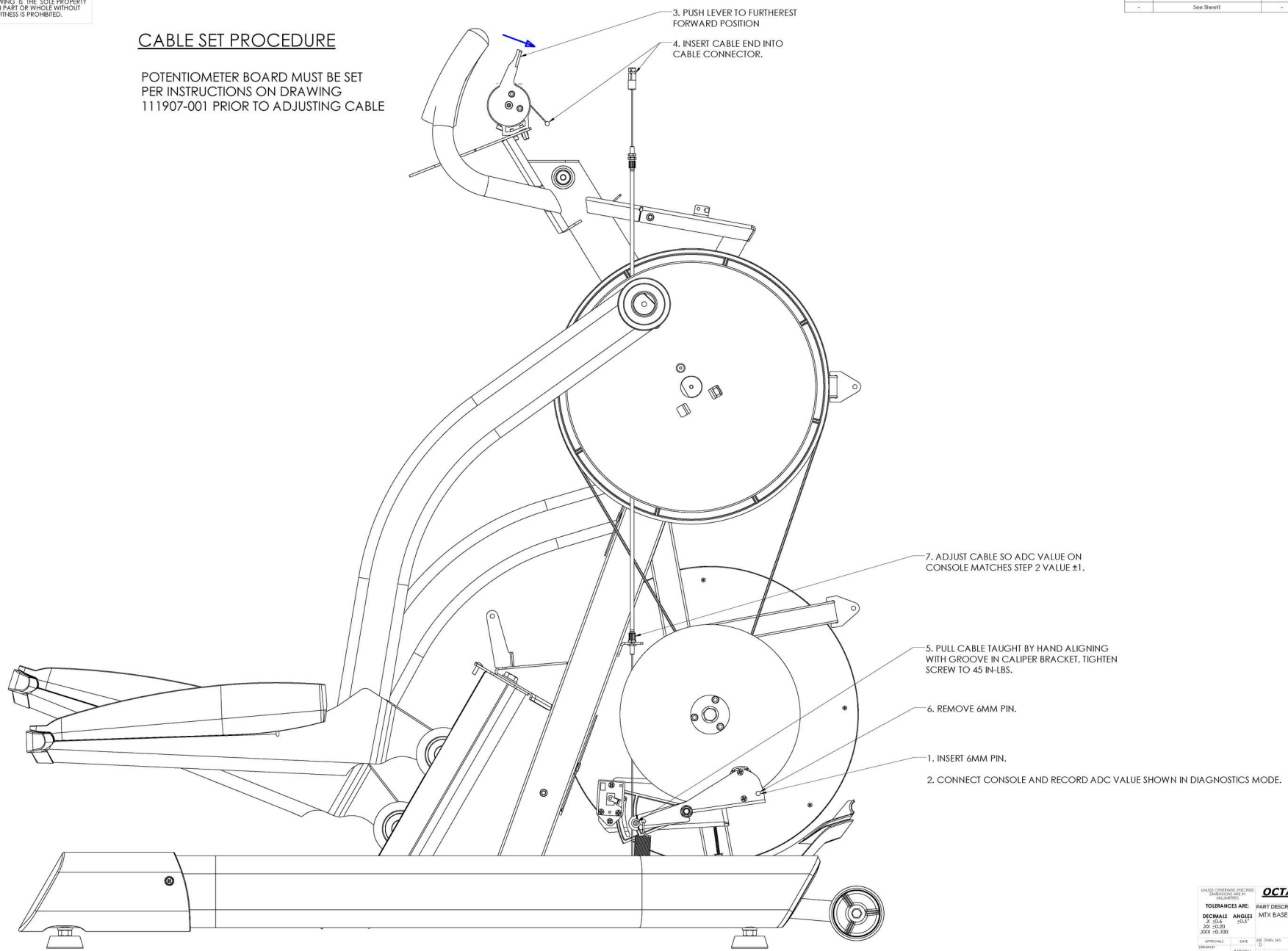
8 7 6 5 4 3 2 1

THE INFORMATION CONTAINED IN THIS DRAWING IS THE SOLE PROPERTY OF OCTANE FITNESS. ANY REPRODUCTION IN PART OR WHOLE WITHOUT THE WRITTEN PERMISSION OF OCTANE FITNESS IS PROHIBITED.

REV	DESCRIPTION	ECH #	DATE	ENG
-	See Sheet1	-	-	-

CABLE SET PROCEDURE

POTENTIOMETER BOARD MUST BE SET PER INSTRUCTIONS ON DRAWING 111907-001 PRIOR TO ADJUSTING CABLE



OCTANE FITNESS
Fuel Your Life

UNLESS OTHERWISE SPECIFIED: DIMENSIONS ARE IN INCHES
TOLERANCES ARE: PART DESCRIPTION
DECIMALS ANGLES MTX BASE
OF DIM 0.003 0.003
DIA 0.005 0.005
HOLE 0.010 0.010

APPROVALS: DATE: 02/08/2014
DRAWN BY: SCHALES

REV: 01
SHEET NO.: 1
SHEET TOTAL: 8

111950-001

DO NOT SCALE DRAWING