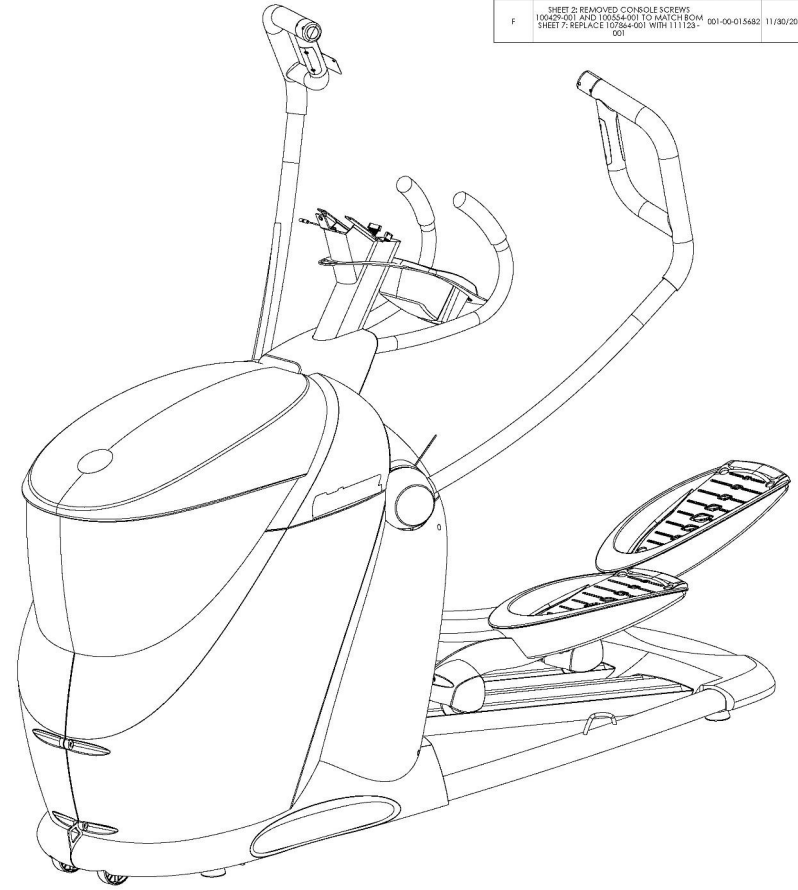
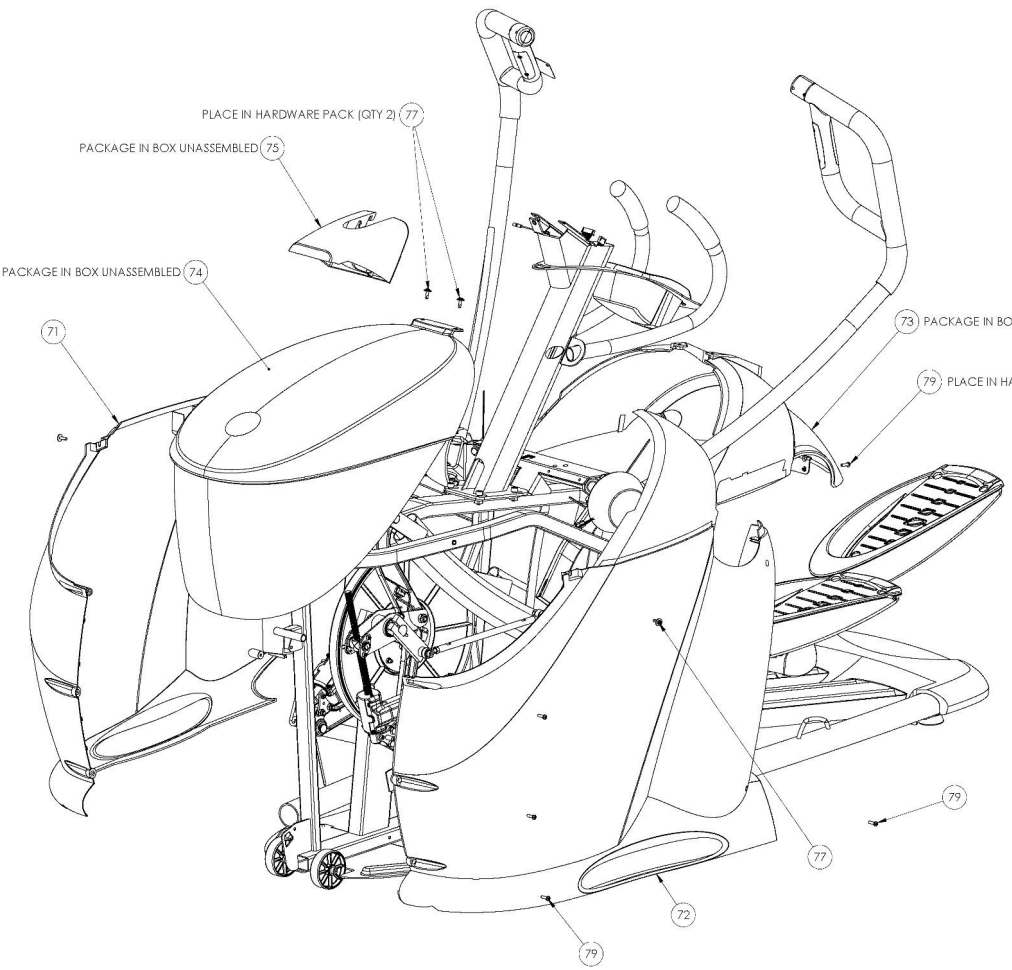


8
7
6
5
4
3
2
1

THE INFORMATION CONTAINED IN THIS DRAWING IS THE SOLE PROPERTY OF OCTANE FITNESS. ANY REPRODUCTION IN PART OR WHOLE WITHOUT THE WRITTEN PERMISSION OF OCTANE FITNESS IS PROHIBITED.

REV	DESCRIPTION	ECN #	DATE	ENG
A	RELEASE FOR PILOT	001-00-015394	1/21/2013	PRS
B	CHANGED DECALS, UPDATED ITEM 46 TO CLASS 10, CHANGED HANDLE WIDTH, CHANGED RCD END SPACER AND TORQUE SPEC. RELEASE FOR PRODUCTION	001-00-015444	5/24/2013	PRS
C	SHEET 4I REMOVED ITEM 61 (QTY 2) AND ADDED ITEM 89 (QTY 2) (SHEET 8) CHANGED ITEM 4, CHANGED QTY ITEM 12	001-00-015475	10/7/2013	PRS
D	SHEET 1: ADDED BALCOONS FOR ITEM 71 AND 72 SHEET 3: CHANGED ITEM 40	001-00-015473	7/21/2014	PRS
E	SHEET 4: CHANGED ITEM 67 AND ADDED CABLE ROUTING IMAGES SHEET 5: CHANGED ITEM 33, 34 SHEET 6: CHANGED ITEM 63	001-00-015537	10/29/2014	PRS
F	SHEET 2: REMOVED CONSOLE SCREWS 10800000 AND 10854001 TO MATCH BOM SHEET 7: REPLACE 107864-001 WITH 111123-001	001-00-015482	11/30/2015	TCC



NOTES:
1. OCTANE FITNESS ENGINEERING APPROVAL ON FIRST SAMPLES AND VENDOR INSPECTION REPORT REQUIRED PRIOR TO PRODUCTION FROM NEW OR REVISED TOOLING.

APPLICABLE OCTANE FITNESS SPECIFICATIONS	
SPEC NO.	SPECIFICATION TITLE
OFS-001	BELT TENSION REQUIREMENTS

ITEM NO.	PART NUMBER	DESCRIPTION	1 - shrouds/QTY.
71	108046-001	SHROUD, RIGHT, Q47	1
72	108046-001	SHROUD, LEFT, Q47	1
73	108597-001	ASSEMBLY, ACCESS PANEL	1
74	108106-001	ASSEMBLY, TOP SHROUD	1
75	101870-001	COVER, MAST BOOT	1
77	102306-001	SCREW, M5 X 0.8 X 18, PAN HEAD, TYPE 1, CROSS RECESSED, BZ, FLAT WASHER	4
79	100787-001	SCREW, M5 X 0.8 X 18, PAN HEAD, TYPE 1 CROSS RECESSED, BZ	9

Full Your Life

 DESCRIPTION: ASSEMBLY, Q47 TOP LEVEL

 SEE NOTES

 108000-001