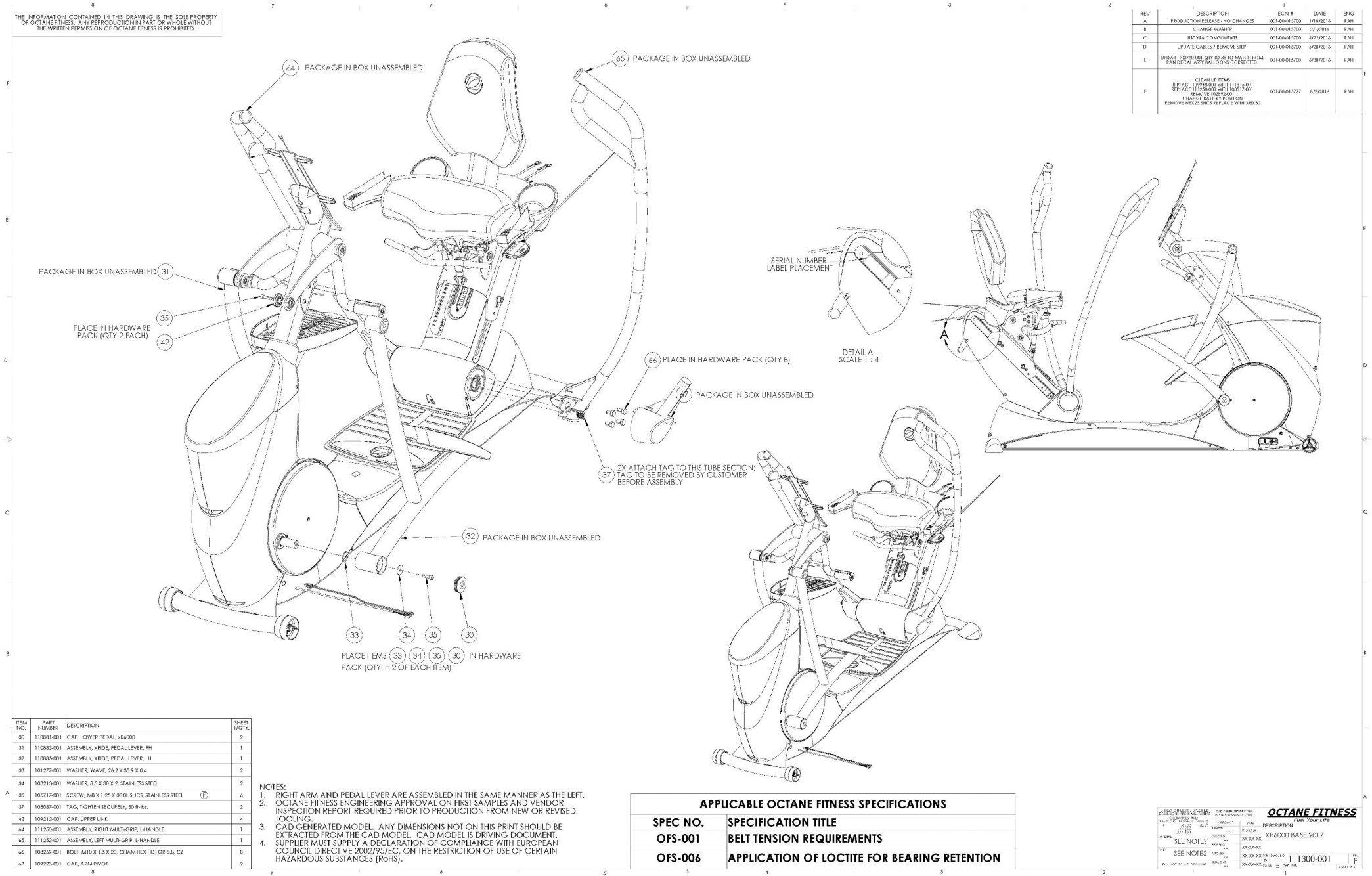


8  
 THE INFORMATION CONTAINED IN THIS DRAWING IS THE SOLE PROPERTY OF OCTANE FITNESS. ANY REPRODUCTION IN PART OR WHOLE WITHOUT THE WRITTEN PERMISSION OF OCTANE FITNESS IS PROHIBITED.

REV	DESCRIPTION	ECN #	DATE	ENG
A	PRODUCTION RELEASE - NO CHANGES	001-00-01-0700	1/18/2016	RAH
B	CHANGE WASHER	001-00-01-0700	7/1/2016	RAH
C	REV 30L COUPLER/SHCS	001-00-01-0700	1/27/2015	RAH
D	UPDATE CABLES / REMOVE STEP	001-00-01-0700	5/28/2016	RAH
E	UPDATE 100790-001 QTY TO 38 TO MATCH BOM. PAN DECAL ASSY BALLOONS CORRECTED.	001-00-01-0700	6/30/2016	RAH
F	CLEANER ITEMS REPLACE 100790-001 WITH 111131-001 REPLACE 111200-001 WITH 100371-001 REPLACE 100370-001 CHANGE BATTERY POSITION REMOVE MKR25 SHCS REPLACE WITH MKR30	001-00-01-0777	8/2/2016	RAH



ITEM NO.	PART NUMBER	DESCRIPTION	SHEET 1/QTY.
30	110881-001	CAP, LOWER PEDAL, XR6000	2
31	110883-001	ASSEMBLY, WIDE, PEDAL LEVER, RH	1
32	110885-001	ASSEMBLY, WIDE, PEDAL LEVER, LH	1
33	101277-001	WASHER, WAVE, 26.2 X 35.9 X 0.4	2
34	105213-001	WASHER, 8.5 X 30 X 2, STAINLESS STEEL	2
35	105717-001	SCREW, M8 X 1.25 X 30.0, SHCS, STAINLESS STEEL	6
37	103037-001	TAG, TIGHTEN SECURELY, 30 IN-IBL	2
42	109212-001	CAP, UPPER LINK	4
64	111205-001	ASSEMBLY, RIGHT MULTI-GRIP, L-HANDLE	1
65	111252-001	ASSEMBLY, LEFT MULTI-GRIP, L-HANDLE	1
66	103269-001	BOLT, M10 X 1.5 X 20, CHAM HEX HD, GR 8.8, CZ	8
67	109223-001	CAP, ARM PIVOT	2

NOTES:  
 1. RIGHT ARM AND PEDAL LEVER ARE ASSEMBLED IN THE SAME MANNER AS THE LEFT.  
 2. OCTANE FITNESS ENGINEERING APPROVAL ON FIRST SAMPLES AND VENDOR INSPECTION REPORT REQUIRED PRIOR TO PRODUCTION FROM NEW OR REVISED TOOLING.  
 3. CAD GENERATED MODEL. ANY DIMENSIONS NOT ON THIS PRINT SHOULD BE EXTRACTED FROM THE CAD MODEL. CAD MODEL IS DRIVING DOCUMENT.  
 4. SUPPLIER MUST SUPPLY A DECLARATION OF COMPLIANCE WITH EUROPEAN COUNCIL DIRECTIVE 2002/95/EC, ON THE RESTRICTION OF USE OF CERTAIN HAZARDOUS SUBSTANCES (RoHS).

APPLICABLE OCTANE FITNESS SPECIFICATIONS	
<b>SPEC NO.</b>	<b>SPECIFICATION TITLE</b>
<b>OFS-001</b>	<b>BELT TENSION REQUIREMENTS</b>
<b>OFS-006</b>	<b>APPLICATION OF LOCTITE FOR BEARING RETENTION</b>

REVISIONS: 10/18/2016  
 DRAWING NO. 111130-001  
 PART NUMBER 111130-001  
 DESCRIPTION XR6000 BASE 2017  
 SEE NOTES  
 OCTANE FITNESS  
 Full Your Life  
 111130-001  
 111130-001