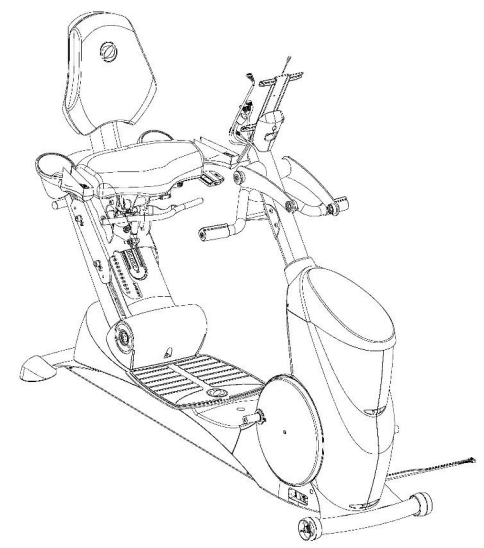
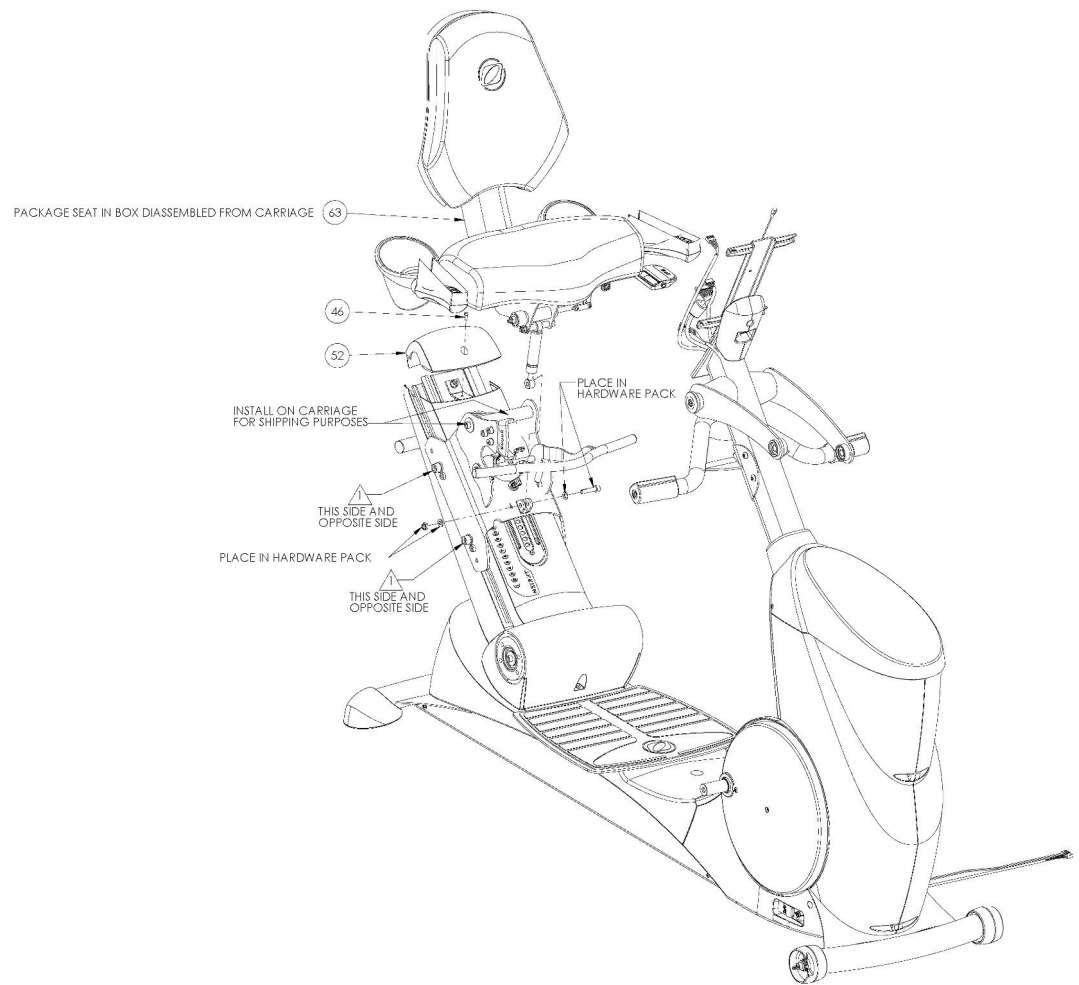


THE INFORMATION CONTAINED IN THIS DRAWING IS THE SOLE PROPERTY OF OCTANE FITNESS. ANY REPRODUCTION IN PART OR WHOLE WITHOUT THE WRITTEN PERMISSION OF OCTANE FITNESS IS PROHIBITED.

REV	DESCRIPTION	ECO #	DATE	ENG
-	See Sheet 1	-	-	-



ITEM NO.	PART NUMBER	DESCRIPTION	SHEET 2/3 OF 1
46	100790-001	SCREW, M8 X 0.8 X 12, FAN HEAD, TYPE 1 CROSS RECESSED, STAINLESS STEEL	39
52	109218-001	ASSEMBLY, CAP, SHROUD, REAR	1
63	110873-001	ASSEMBLY, SEAT, XR6000	1

NOTES:

- WITH SEAT CARRIAGE INSTALLED ON RAILS, TORQUE M12 SCREWS TO 40 N-M (30 FT-LB) WHILE HOLDING ROLLER CAMS AT 10 N-M (7.4 FT-LB).
- OCTANE FITNESS ENGINEERING APPROVAL ON FIRST SAMPLES AND VENDOR INSPECTION REPORT REQUIRED PRIOR TO PRODUCTION FROM NEW OR REVISED TOOLING.
- CAD GENERATED MODEL. ANY DIMENSIONS NOT ON THIS PRINT SHOULD BE EXTRACTED FROM THE CAD MODEL. CAD MODEL IS DRIVING DOCUMENT.
- SUPPLIER MUST SUPPLY A DECLARATION OF COMPLIANCE WITH EUROPEAN COUNCIL DIRECTIVE 2002/95/EC, ON THE RESTRICTION OF USE OF CERTAIN HAZARDOUS SUBSTANCES (RoHS).

OCTANE FITNESS
Full Year Line

DESCRIPTION: XR6000 BASE 2017

SEE NOTES

111300-001