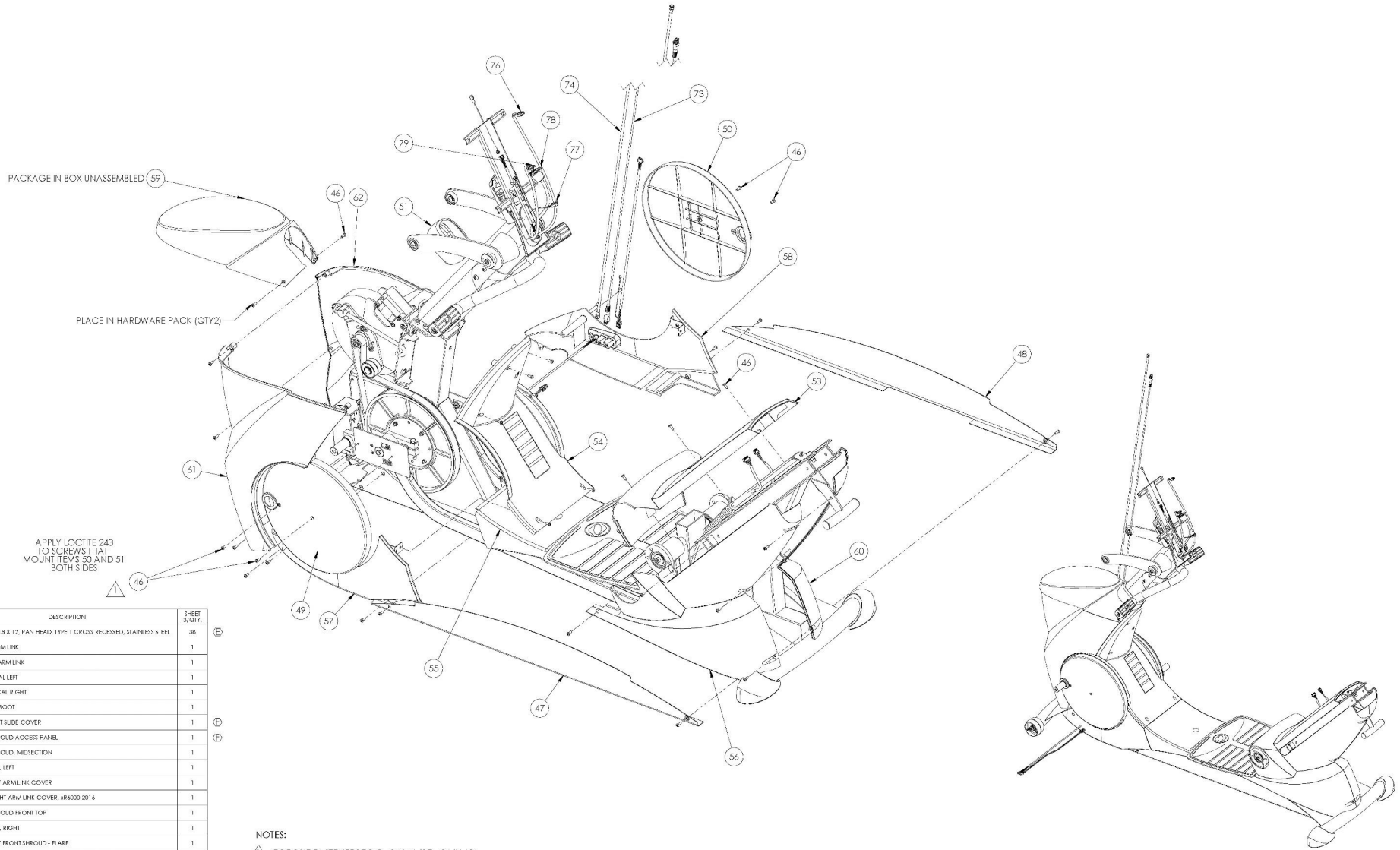


8 THE INFORMATION CONTAINED IN THIS DRAWING IS THE SOLE PROPERTY OF OCTANE FITNESS. ANY REPRODUCTION IN PART OR WHOLE WITHOUT THE WRITTEN PERMISSION OF OCTANE FITNESS IS PROHIBITED.

REV	DESCRIPTION	ECO #	DATE	ENG
-	See Sheet	-	-	-



ITEM NO.	PART NUMBER	DESCRIPTION	SHEET QTY.
46	100780-001	SCREW, M5 X 0.8 X 12, PAN HEAD, TYPE 1 CROSS RECESSED, STAINLESS STEEL	36
47	111245-001	PANEL, LEFT ARM LINK	1
48	111246-001	PANEL, RIGHT ARM LINK	1
49	111750-001	ASY, PAN DECAL LEFT	1
50	111751-001	ASSY, PAN DECAL RIGHT	1
51	102258-001	COVER, MAST BOOT	1
53	111815-001	ASSEMBLY, SEAT SLIDE COVER	1
54	103317-001	ASSEMBLY, SHROUD ACCESS PANEL	1
55	103071-001	ASSEMBLY, SHROUD, MID DIRECTION	1
56	109220-001	SHROUD, REAR, LEFT	1
57	103049-001	ASSEMBLY, LEFT ARM LINK COVER	1
58	111256-001	ASSEMBLY, RIGHT ARM LINK COVER, XR6000 2016	1
59	110894-001	ASSEMBLY, SHROUD FRONT TOP	1
60	109222-001	SHROUD, REAR, RIGHT	1
61	103315-001	ASSEMBLY, LEFT FRONT SHROUD - FLARE	1
62	103314-001	ASSEMBLY, RIGHT FRONT SHROUD - FLARE	1
73	104727-001	CABLE ASSEMBLY, LAN	1
74	110712-001	CABLE, CO-AXIAL, XT	1
76	111744-001	CABLE PWR, FRAME	1
77	111742-001	CABLE ASY, FRAME HEART RATE	1
78	111745-001	CABLE PAC, FRAME	1
79	111743-001	CABLE ASY, FRAME BUTTONS	1

- NOTES:
- TORQUE FASTENERS TO 2 - 3 N-M (17 - 26 IN-LB).
 - ALL FASTENERS SHOWN IN EXPLODED STATE ARE PART NUMBER 100780-001.
 - OCTANE FITNESS ENGINEERING APPROVAL ON FIRST SAMPLES AND VENDOR INSPECTION REPORT REQUIRED PRIOR TO PRODUCTION FROM NEW OR REVISED TOOLING.
 - CAD GENERATED MODEL. ANY DIMENSIONS NOT ON THIS PRINT SHOULD BE EXTRACTED FROM THE CAD MODEL. CAD MODEL IS DRIVING DOCUMENT.
 - SUPPLIER MUST SUPPLY A DECLARATION OF COMPLIANCE WITH EUROPEAN COUNCIL DIRECTIVE 2002/95/EC, ON THE RESTRICTION OF USE OF CERTAIN HAZARDOUS SUBSTANCES (ROHS).

OCTANE FITNESS
Full Year Line

DESCRIPTION: XR6000 BASE 2017

SEE NOTES

111300-001